

# Cardiff Rugby Team Tour of South Africa 1967

[IT Tour No. 102/1/67]



*Cape Town, with Table Mountain in the background.*

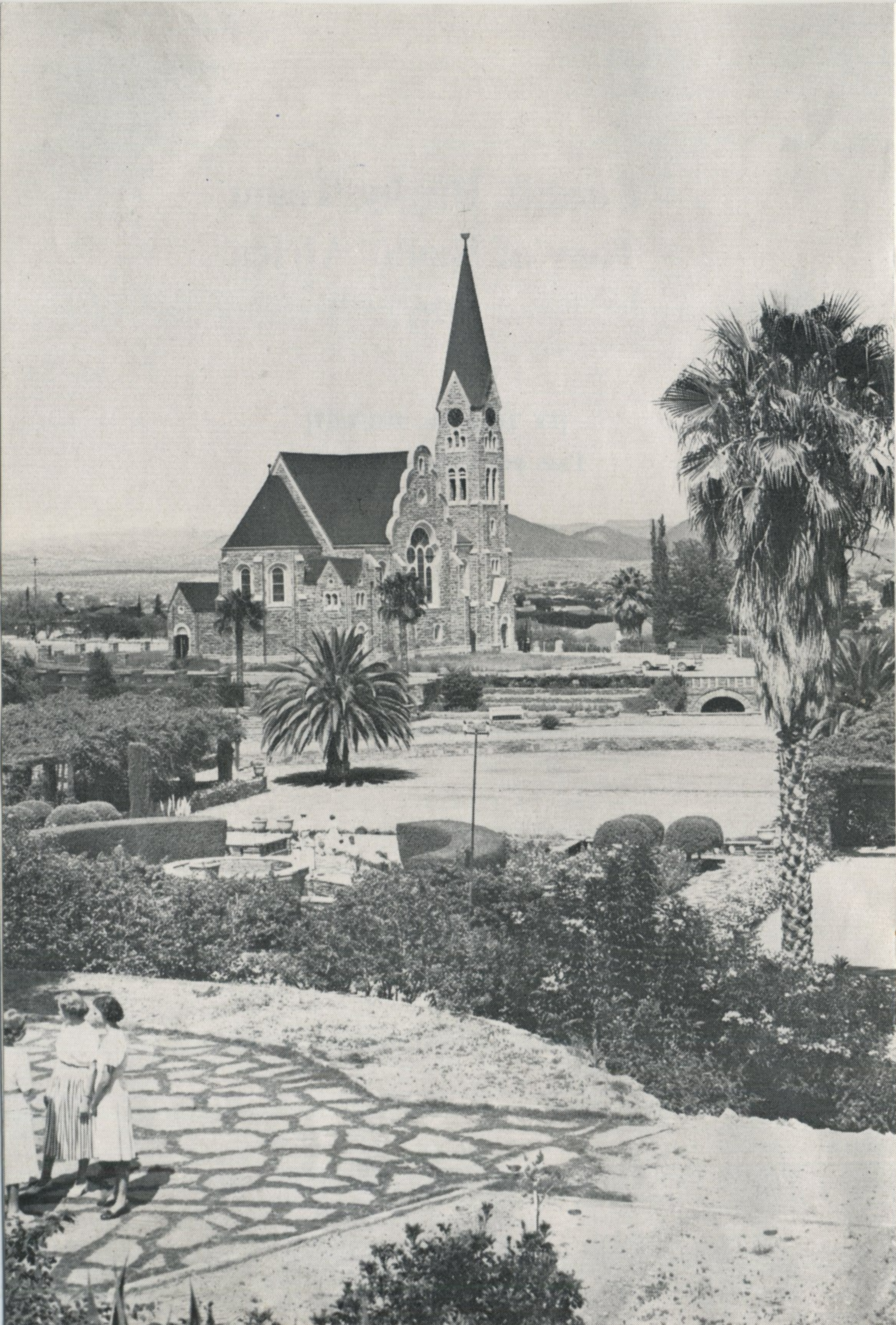
**South African Railway Travel Bureau, South Africa House, Trafalgar Square,  
London, W.C.2, ENGLAND**

**Cardiff Rugby Team  
Tour of South Africa  
1967**

[IT Tour No. 102/1/67]

Fare per Person: £370.5.0

**TRANSPORTATION** (economy class) by South African Airways in association with British Overseas Airways Corporation as listed in the itinerary, otherwise by any I.A.T.A. member airline.



J. E. Davies (Jack)  
Played all 5 Games  
together with Clive Evans

### CARDIFF RUGBY TEAM TOUR OF SOUTH AFRICA

#### May, 1967:

- Wed. 3rd 5.15 p.m. Depart LONDON by Flight SA.233.
- Thurs. 4th 8.15 a.m. Arrive JAN SMUTS AIRPORT. Change aircraft.  
10.30 a.m. Depart JAN SMUTS AIRPORT by Flight SA.671.  
3.05 p.m. Arrive WINDHOEK. Transfer to and stay at the Grand Hotel.
- Sat. 6th **Match against South West Africa.**
- Sun. 7th 9.00 a.m. Transfer to the airport.  
10.00 a.m. Depart WINDHOEK by charter flight.

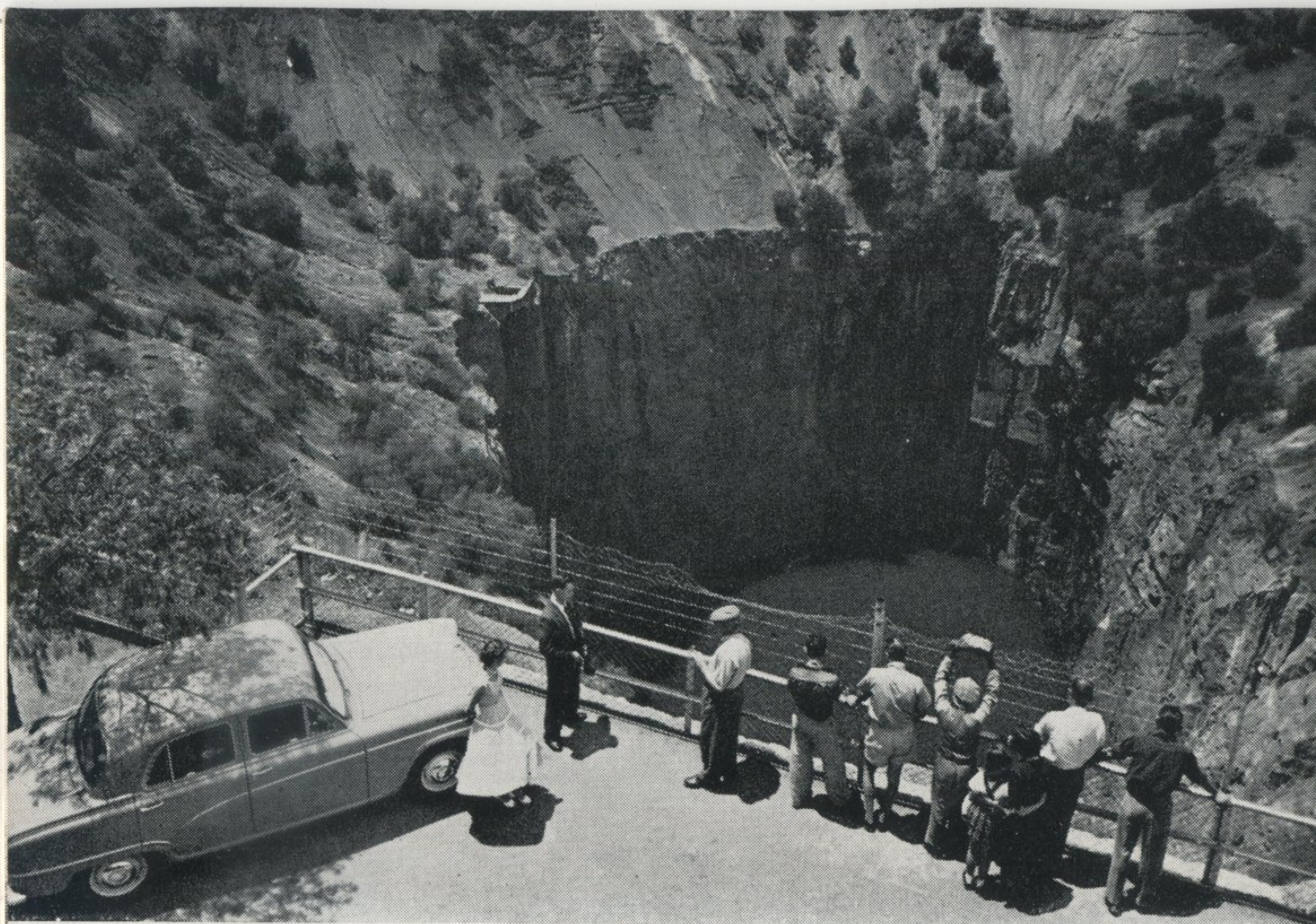
**Windhoek**, capital of South West Africa, is the seat of the Administration and principal business and sports centre of the Territory. South West Africa, formerly a German Colony, still has a continental atmosphere, especially in the major centres such as Windhoek, and the three castles, Schwerinburg, Heinitzburg and Sanderburg are among the most romantic facets of this romantic town. All may be visited with the owners' permission. The old fort is the oldest building in Windhoek and was built by Major von Francois. It is commonly known as "Die Alte Feste" and is now a historical monument.

There is a unique swimming bath where water is pumped from hot springs into large cooling tanks and subsequently into the bath itself. As the water from the springs is 98°C, it is necessary to cool it for twenty-four hours.

South West Africa owes much of its charm to the wide contrasts within its borders—ranging from modern, progressive towns to the silence of the untrodden wilderness; from craggy mountain peaks to wide expanses of grassland; from the barren waste-lands of the Namib desert to the woodlands of the north, teeming with wild life.

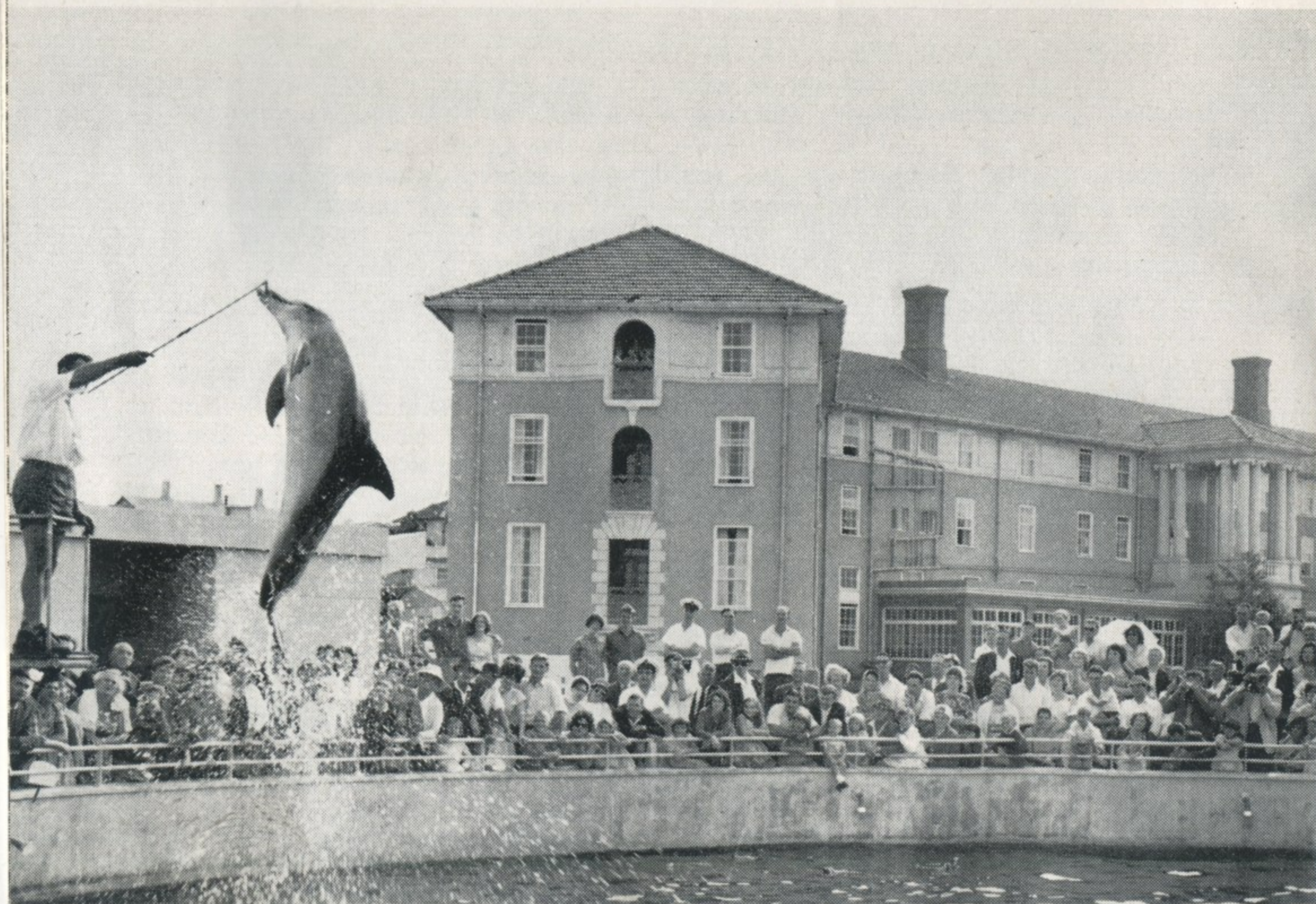
South West Africa is also known for its Karakul pelts.

*The Lutheran Church, Windhoek.*



The "Big Hole", Kimberley, from which about three tons of diamonds have been recovered.

The Oceanarium at Port Elizabeth.



## CARDIFF RUGBY TEAM TOUR OF SOUTH AFRICA

Sun. 7th 12.30 p.m. Arrive UPINGTON. Stay at the Oranje Hotel. During the stay, visits will be arranged to the Gemsbok Game Reserve and the Augrabies Falls.

**Wed. 10th Match against North Western Cape Districts.**

Thurs. 11th 8.00 a.m. (or earlier). Depart UPINGTON by charter flight.

10.00 a.m. Arrive KIMBERLEY Airport. Change aircraft.

10.50 a.m. Depart KIMBERLEY by Flight SA.411.

11.45 a.m. Arrive PORT ELIZABETH. Transfer to and stay at the Elizabeth Hotel.

**Sat. 13th Match against Eastern Province.**

Sun. 14th 10.00 a.m. Transfer to the airport.

11.05 a.m. Depart PORT ELIZABETH by Flight SA.501.

**Upington** is a large railway centre linking South Africa with South West Africa. The Orange River Valley at Upington is one of the most highly developed agricultural areas in the Republic.

Only seventy miles from Upington is the Augrabies Falls, considered to be one of the five largest in the world. The falls, discovered in 1778, derives its name from the Hottentot word "Aukoerabis", which means the "Place of the Big Noise".

**Kimberley** dates from 1871, when diamonds were discovered. The ensuing rush speedily created an extensive mining camp which, in the course of the years, has developed into a handsome city, linked forever with the name of Cecil John Rhodes.

The most famous landmark is the "Big Hole". Its diameter is 1,500 feet and the circumference nearly a mile. In the forty-four years of the mine's working life, 15,000,000 carats (about three tons) of diamonds were recovered.

**Port Elizabeth**, the second largest city in the Cape Province, is named after the wife of Sir Rufane Donkin, a Governor of the Cape. The Campanile, a well-known landmark towering to nearly 170 feet, commemorates the arrival of 4,000 British settlers in 1820.

A very important industrial centre, Port Elizabeth is the home of extensive motor-assembly plants and is also South Africa's largest wool exporting port. It is renowned as a holiday resort, with spacious beaches, and houses a world-famous snake park and oceanarium.



The "Raadsaal", Church Square, Pretoria.

A glimpse of Johannesburg with the railway station in the centre foreground.



## CARDIFF RUGBY TEAM TOUR OF SOUTH AFRICA

- Sun. 14th 12.10 p.m. Arrive CAPE TOWN. Transfer to and stay at the Arthur's Seat Hotel, Sea Point.
- Wed. 17th Match against Southern Universities.**
- Thurs. 18th 6.30 a.m. Transfer to D. F. Malan Airport.  
7.45 a.m. Depart CAPE TOWN by Flight SA.304.  
10.05 a.m. Arrive JAN SMUTS AIRPORT. Transfer to and stay at the Union Hotel, PRETORIA.
- Sat. 20th Match against Northern Transvaal.**
- Sun. 21st 4.00 p.m. Transfer to Jan Smuts Airport.  
6.45 p.m. Depart JAN SMUTS AIRPORT by Flight BA.118.
- Mon. 22nd 7.30 a.m. Arrive LONDON.

**Cape Town** had its origin in 1652 when it was established as a victualling station on the long voyage from Europe to the East Indies. It has become the second largest city in South Africa. In its incomparable setting with Table Mountain (3,500 feet) as a background, it is a city of great charm and beauty, and presents an intriguing mixture of old and new.

**Johannesburg** today, only eighty years after the discovery in February, 1886, of the world's richest reef of gold, is a huge metropolis rearing its skyscrapers and spreading the houses of its 1.3 million inhabitants on the site of that discovery.

The city has a university, an art gallery, theatres, historical and geological museums and many cinemas.

A show-place within the city is the zoological gardens situated in the 200-acre Hermann Eckstein Park.

**Pretoria**, named after Andries Pretorius, the hero of the Battle of Blood River, became the capital of the Transvaal Republic in 1860 and, with the formation of the Union in 1910, the Administrative capital of South Africa.

The Union Building, one of the world's architectural wonders, houses Government Departments. The terraced flower gardens are considered to be the most attractive in the country.

The Voortrekker Monument, just outside Pretoria on the road to Johannesburg, is the largest monument in the country and honours the Voortrekkers, the pioneers who brought civilisation to the interior of South Africa.

## LOG OF MATCHES

DATE	VENUE	AGAINST	Points for	Points against	Results
May 6	Windhoek	South West Africa	11	11	D
May 10	Upington	North Western Cape Districts	23	12	W
May 13	Port Elizabeth	Eastern Province	34	9	W
May 17	Cape Town	Southern Universities	<del>11</del> 11	14	L
May 20	Pretoria	Northern Transvaal	<del>15</del> 25	25	L

### NOTES

John (Jack) E Davies and Clive Evans, were the only players to play all 5 Games.

Jack had previously played for WSSRU "Young Dragons" in S. Africa in May 1956

## RESPONSIBILITY

1. The organisers and their subsidiary or associated Companies give notice that all arrangements for transport or conveyance, or for hotel accommodation, are made by them as Agents upon the express condition that they will accept no responsibility or liability in respect of either person or property for any injury, damage, loss, accident, delay, or irregularity which may be occasioned either by reason of any defect in any vehicle, or through the acts or default of any company or person engaged in conveying the passengers, or in carrying out the arrangements of the tour, or otherwise in connection therewith, or of any hotel proprietor or servant.
2. Luggage is at owner's risk unless insured. Small articles, coats, wraps, umbrellas and other hand luggage are entirely under the care of the passenger, who is cautioned against risk attached to these being left in conveyance when sightseeing.
3. The fare for the tour is based on present arrangements with the proprietors and authorities concerned, and are published in good faith. As, however, they are subject to revision by the parties with whom they are made, SOUTH AFRICAN RAILWAY TRAVEL BUREAU and their subsidiary or associated Companies cannot hold themselves responsible for any changes which may take place. The charges for the tour announced are calculated on the rates of exchange prevailing at the time of going to press and are subject to revision in accordance with the fluctuations which may take place subsequently.
4. The organisers therefore must reserve the right to modify the itineraries, change hotels, or vehicles, in any way they think desirable, or which may be due to circumstances beyond their control.
5. *Group Tour Validity:* Return travel from the last point of stop-over in South Africa may not commence prior to the 14th day after arrival, and must be completed within 30 days, ignoring the day on which the forward journey is commenced.