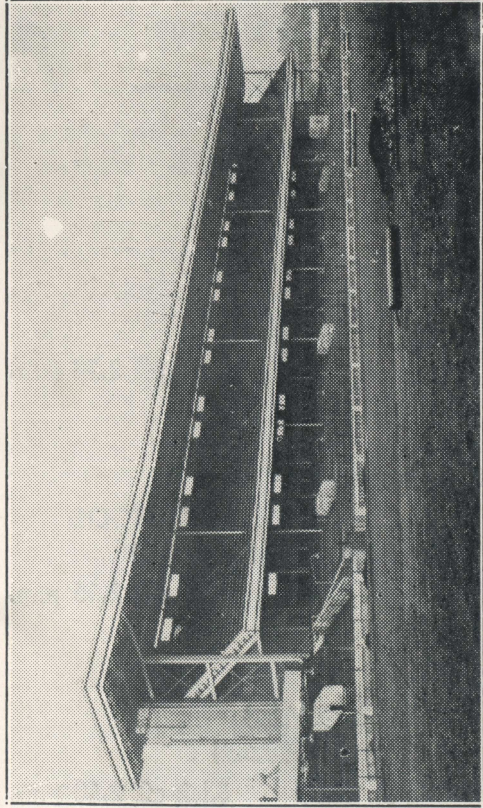


CARDIFF RUGBY FOOTBALL CLUB



SCOTTISH TOUR

**29th December, 1934
• 2nd January, 1935 •**



THE NEW GRAND STAND.
Opened on the occasion of the England v. Wales match at Cardiff, 20th January, 1934.

Cardiff Rugby Football Club Scottish Tour

FIXTURES.

29th December.

BRISTOL.

Kick-off 2.30 p.m.

31st December.

GLASGOW HIGH SCHOOL
(Old Anniesland Ground)

Kick-off 2.30 p.m.

1st January.

WATSONIANS
(Myreside Ground)

Kick-off 2.30 p.m.

INSTRUCTIONS TO PLAYERS.

It will be a convenience and it will greatly assist in the safe transit of luggage if each member of the party will see that a label is attached to his case bearing his name and the words—

“CARDIFF RUGBY CLUB—
SCOTTISH TOUR.”

Headquarters :—

ADELPHI HOTEL,
COCKBURN STREET,
EDINBURGH.

It is hoped that all members of the party will keep to the given times. Any alterations will be announced daily.

COMMITTEE AND OFFICIALS ON TOUR.

Mr. W. M. DOUGLAS, *Chairman.*

„ R. A. CORNISH, *Vice-Chairman.*

„ F. DAVIES, *Committee.*

„ J. A. LAWRENCE, *Committee.*

„ R. W. BARRY, *Committee.*

„ L. C. WATTERS, *Secretary.*

„ J. A. POWELL, *Hon. Masseur.*

PLAYERS ON TOUR.

Backs—BROWN, D., DALEY, J., FLETCHER,
R. J., HOPKINS, M., REARDON, W.,
STONE, T., TURNBULL, M. J., THOMAS,
A. T., WINTER, G.

Forwards—BABBAGE, G., DAVIES, W. E. N.,
ELLIWARD, D., JONES, J. D., REES, Dr. E.
NOEL, REES, H., REGAN, J., SKYM, A.
(*Capt.*), STREET, K., SPENCE, L.,
WATKINS, E.

SATURDAY, 29th DECEMBER.

Depart Cardiff General Station 12.20 p.m.

Arrive Stapleton Road, Bristol 1.20 „

Coach to Memorial Ground -

Kick-off - - - - 2.30 „

Coach to Hort's Restaurant - 4.45 „

Dinner - - - - 5.30 „

Coach to Temple Meads
Station from Hort's 6.30 „

Depart Temple Meads, Bristol 7.20 „

Supper—Crewe Dining Saloon 11.0 „

SUNDAY, 30th DECEMBER.

Arrive Edinburgh (Princes St.)	7.50	a.m.
Breakfast - - - -	9.0	„
Lunch - - - -	1.0	p.m.
Tour by Saloon 'Bus to :—	2.0	„
Edinburgh Castle (War Memorial)		
Royal Mile, passing		
St. Giles Cathedral		
City Chambers		
Tron Church		
Huntly Museum		
Tolbooth Church		
Palace of Holyroodhouse		
Queen's Drive, around		
Arthur's Seat		
Abbeymount		
Princes Street		
Dean Bridge		
Queensferry Road, passing		
Fettes College		
Daniel Stewart's College		
Blackhall		
Barnton		
Cramond Bridge		
Forth Bridge		
Kirkliston		
Turnhouse		
Corstorphine		
Murrayfield		
West End		

Time will be allowed for visiting the various places of interest.

High Tea - - - -	6.0	p.m.
Snacks - - - -	10.30	„

MONDAY, 31st DECEMBER.

Breakfast - - - -	9.0	a.m.
Depart Edinburgh (Princes St.)	11.0	„
Arrive Glasgow (Central) -	12.9	p.m.
Lunch - - - -	12.30	„
Coach to Old Anniesland Ground - - - -	1.45	„
Kick-off - - - -	2.30	„
Dinner : Guests of The Glas- gow High School.		
Coach to Station - - - -	9.0	„
Depart - - - -	9.35	„
Arrive Edinburgh (Princes St.)	10.45	„

NEW YEAR'S EVE.

TUESDAY, 1st JANUARY.

A GREETING—
A HAPPY AND PROSPEROUS NEW
YEAR.

Breakfast - - - - 9.10 a.m.
Lunch - - - - 12.45 p.m.
Coach to Myreside Ground - 1.45 „
Kick-off - - - - 2.30 „
Dinner : Guests of Watsonian R.F.C.

WEDNESDAY, 2nd JANUARY.

Breakfast - - - - 9.0 a.m.
Depart Edinburgh (Princes St.) - 10.5 „
Lunch - - - - 1.0 p.m.
Tea - - - - 5.0 „
Arrive Cardiff General - - 7.46 „

MATCH RESULTS.

Date.	Club	Points For	Points Agst.
Dec. 29	Bristol - - -		
Dec. 31	Glasgow High School		
Jan. 1	Watsonians - -		
	TOTAL -		

AUTOGRAPHS.

AUTOGRAPHS.

AUTOGRAPHS.

—

