



# Harlequin Football Club

HARLEQUINS v. CARDIFF

*at Rugby Football Union Ground, Twickenham*

**Saturday, 12th December, 1953**

**Kick-off 2.30 p.m.**

*price 3d.*

T. M. Lewin & Sons, known all over the World for University, School, Regimental and Club Colours, provide a service unique in range, accuracy and specialised knowledge

TIES - BADGES - SQUARES  
SCARVES - BLAZERS  
SWEATERS

**T. M. Lewin & Sons Ltd.**

103 JERMYN STREET, ST. JAMES'S, S.W.1  
Telephone WHItchall 4291  
Established 1898



## the *Waterproof* Duffle Coat

Made of a new composite fabric, wool tartan backed, which gives complete protection against wind, rain and cold. This extremely hard-wearing coat is ideal for spectator sports and all country wear. Small, medium and large sizes. Fawn or Navy. **£8.17.6**

Postage and Packing 2s.0d.

**Lillywhites**  
LTD

PICCADILLY CIRCUS, LONDON and BOURNEMOUTH

## FIXTURES—1st XV Season 1953/54

| Date        | Time  | Opponents            | Ground        | Result | For | Against |
|-------------|-------|----------------------|---------------|--------|-----|---------|
| Sept. 12    | ..... | St. Thomas's Hosptl. | Cobham        | Won    | 14  | 0       |
| 19          | 3.15  | St. Mary's Hospital  | Twickenham.   | Won    | 12  | 0       |
| 26          | 3.15  | Leicester .. ..      | Twickenham.   | Lost   | 6   | 9       |
| Oct. 3      | ..... | London Scottish ..   | Richmond.     | Won    | 18  | 6       |
| 10          | 3.00  | U.S. Portsmouth ..   | Twickenham.   | Won    | 14  | 10      |
| 17          | 3.00  | Waterloo .. ..       | Twickenham.   | Won    | 10  | 3       |
| 21          | ..... | Metro. Police .. ..  | Imber Court   | Lost   | 8   | 11      |
| 24          | 2.45  | Swansea .. ..        | Twickenham.   | Won    | 8   | 3       |
| 31          | 2.45  | Bath .. ..           | Twickenham.   | Won    | 11  | 0       |
| Nov. 7      | 11.00 | Bristol .. ..        | Teddington.   | Won    | 16  | 5       |
| 14          | ..... | Richmond .. ..       | Richmond.     | Draw   | 0   | 0       |
| 21          | 2.30  | Oxford University .. | Twickenham.   | Won    | 19  | 9       |
| 28          | 2.30  | Blackheath .. ..     | Twickenham.   | Draw   | 3   | 3       |
| Dec. 5      | ..... | Rosslyn Park .. ..   | Old Deer Park | Lost   | 11  | 12      |
| 12          | 2.30  | Cardiff .. ..        | Twickenham.   | LOST   | 0   | 10      |
| 19          | ..... | Newport .. ..        | Newport.      |        |     |         |
| <b>1954</b> |       |                      |               |        |     |         |
| Jan. 2      | ..... | Bristol .. ..        | Bristol.      |        |     |         |
| 9           | ..... | Blackheath .. ..     | Blackheath.   |        |     |         |
| 16          | ..... | England v. Wales     | Twickenham.   |        |     |         |
| 23          | ..... | Cambridge Univ.      | Cambridge     |        |     |         |
| 30          | ..... | Eng. v. N. Zealand   | Twickenham.   |        |     |         |
| Feb. 6      | 2.45  | Northampton .. ..    | Teddington.   |        |     |         |
| 13          | ..... | England v. Ireland   | Twickenham.   |        |     |         |
| 20          | 3.00  | London Welsh .. ..   | Teddington.   |        |     |         |
| 27          | 3.00  | Royal Navy .. ..     | Twickenham.   |        |     |         |
| Mar. 6      | ..... | Leicester .. ..      | Leicester.    |        |     |         |
| 13          | 3.00  | Bedford .. ..        | Twickenham.   |        |     |         |
| 20          | ..... | Moseley .. ..        | Moseley       |        |     |         |
| 27          | ..... | Heriots F.P. .. ..   | Edinburgh     |        |     |         |
| Apr. 3      | ..... | Coventry .. ..       | Coventry.     |        |     |         |
| 10          | ..... | Gloucester .. ..     | Gloucester.   |        |     |         |
| 15          | ..... | Bath .. ..           | Bath.         |        |     |         |
| 17          | ..... | Swansea .. ..        | Swansea.      |        |     |         |
| 19          | ..... | Cardiff .. ..        | Cardiff.      |        |     |         |
| 24          | 3.00  | London Irish .. ..   | Twickenham.   |        |     |         |
| May 1       | ..... | Middlesex 7-a-side   | Twickenham.   |        |     |         |

# HARLEQUINS v. CARDIFF

## HARLEQUINS

Colours: Light Blue, Magenta, Chocolate,  
French Grey, Black and Light Green.

|    |                      |            |
|----|----------------------|------------|
| 1  | N. GIBBS             | Full Back  |
| 2  | J. BOOTHMAN          | L. Wing    |
| 3  | W. P. C. DAVIES*     | L. Centre  |
| 4  | H. C. FORBES         | R. Centre  |
| 5  | C. G. WOODRUFF*      | R. Wing    |
| 6  | M. L. GRANT          | Stand-off  |
| 7  | H. JONES             | Scrum Half |
| 8  | D. L. SANDERS        | Forward    |
| 9  | N. A. LABUSCHAGNE*   | Forward    |
| 10 | P. D. STRANG         | Forward    |
| 11 | T. K. VIVIAN         | Forward    |
| 12 | H. G. GREATWOOD      | Forward    |
| 13 | D. M. GUNSON         | Forward    |
| 14 | D. K. BROOKS (Capt.) | Forward    |
| 15 | V. G. ROBERTS*       | Forward    |

\* INTERNATIONALS

Referee: T. L. DAVIES (L.S.R.F.U.R.)

## CARDIFF

Colours: Cambridge Blue and Black.

|   |                |    |
|---|----------------|----|
| 2 | G. LLEWELLYN   | 1  |
|   | D. JAMES       | 2  |
|   | H. NICHOLLS    | 3  |
| 3 | B. L. WILLIAMS | 4  |
|   | G. GRIFFITHS   | 5  |
| 3 | C. MORGAN      | 6  |
|   | R. WILLIS      | 7  |
|   | S. BOWES       | 8  |
|   | G. BECKENHAM   | 9  |
|   | J. D. EVANS    | 10 |
|   | M. COLLINS     | 11 |
|   | E. THOMAS      | 12 |
|   | J. B. NELSON   | 13 |
| 3 | S. JUDD        | 14 |
|   | C. D. WILLIAMS | 15 |

THE CARDIFF CLUB has throughout its long history been famous for its traditional open style of play. The first few years were uneventful, as it was not until 1884 that Cardiff began to make its mark in the Rugby world. That season under that great strategist, F. E. Hancock, the club went through to the last match against Moseley before suffering a reverse. In the following year the club again only lost one game out of 27, and scored 533 points to 14—a wonderful achievement.

The most famous of Cardiff three-quarters, Gwyn Nicholls, joined the club in 1893. He retained his form for many years and was at his best in 1905-6, when Percy Bush, one of the most daring attacking players in Rugby history, led a brilliant Cardiff side. They played 32 matches and scored 513 points against 86. The one defeat was against the all-conquering "All Blacks," who won a memorable struggle by the smallest margin.

When war came in 1914, the club for all practical purposes closed down, but by 1922 another successful period began.

Between the wars many fine footballers turned out for the club, including Cliff Jones, Wilfred Wooller, Rev. John Roberts, B. O. Male, T. Johnson, R. A. Cornish, W. J. Delahay, Frank Williams and Archie Skym.

The club continued to function during the Second World War and its present team has quite a solid foundation of war-time players.

The year 1946 saw the advent of Haydn Tanner, considered by some judges the most brilliant scrum-half of all time. The season that followed, considering the strength of the opposition, was the greatest in the club's history, when they won 39 of 41 games and scored 803 points to 161.

# BRYLCREEM

## THE PERFECT

## HAIRDRESSING



In easy-dip, easy grip tubs  
or handy tubes

# HAVE A TAVERN

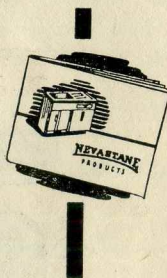
the stronger ale  
at a  
lighter price

says  
"Hoppy"



*The complete Kitchen Planning Service*

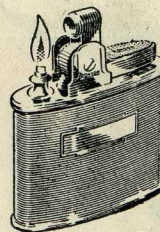
Here is a really practical service to help every woman who wants to make her kitchen easier to run and more comfortable—to get the best out of every inch of its space. If you are interested in solid, durable wood kitchen equipment—built by craftsmen working to furniture standards—why not send for this helpful NEVASTANE Brochure: it includes a useful kitchen-planning page designed for all needs. And this service is quite free!



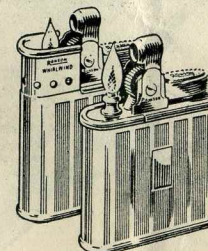
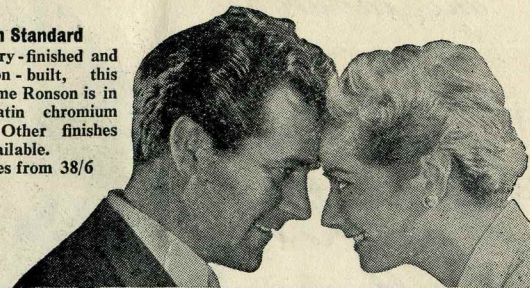
**NEVASTANE PRODUCTS**

201 HORNSEY ROAD, LONDON, N.7. Tele. ARCHWAY 2336

ON EVERY GIFT OCCASION . . .



**Ronson Standard**  
Jewellery-finished and precision-built, this handsome Ronson is in rich satin chromium plate. Other finishes also available.  
Prices from 38/6



**Ronson Whirlwind**, with sliding windshield, lights in any weather. This one in engine-turned chromium 50/-—also other attractive finishes from 43/6

*Get a*  
**RONSON**

WORLD'S GREATEST LIGHTER

*Choice of over 60 lovely designs*

FOR YOUR OWN PROTECTION—LOOK FOR THE TRADE MARK **RONSON**

SATURDAY 27th FEBRUARY

**HARLEQUINS**

v

**ROYAL NAVY**

at **R.F.U. Ground, Twickenham**

KICK OFF 3.0 P.M.

*Mighty in strength  
and endurance*

THE  
*Eagle*

THE ULTIMATE  
IN CAR TYRE QUALITY



**OUTSTANDING VALUE  
FOR THE BIGGER CAR**

It's the toughest car tyre ever built. The tread is thicker, deeper, wider and flatter. Sidewalls are specially reinforced. The resilient cord carcass is stronger and more bruise-resisting. And the famous All-Weather Diamond tread design — with improved Stop-Notches — gives better road grip, silent running and quicker, safer stops. Providing longer mileage, more riding comfort and handsome appearance, the Eagle offers truly outstanding value for the bigger car.

*You can trust*

**GOOD YEAR**

FOR LONG LIFE AND LASTING WEAR