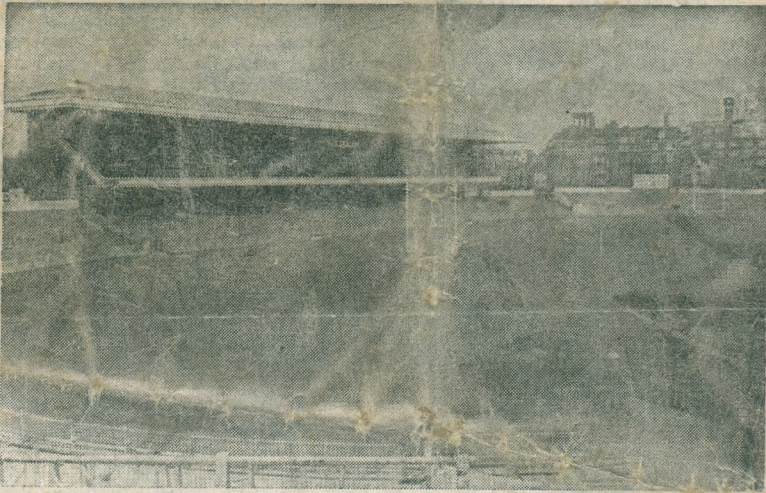


CARDIFF RUGBY FOOTBALL CLUB

SEASON



1962 - 1963



CARDIFF ARMS PARK

CARDIFF

v.

WASPS

WEDNESDAY - DECEMBER 26th - 1962

Kick-off 2.15 p.m.

OFFICIAL PROGRAMME - 3d.

Call
in



For help in Homemaking

H. R. PAUL & SON LIMITED

Broad Street, Barry. Tel. Barry 148
Cowbridge Rd., Wyndham St., Bridgend. Tel. Bridgend 3846
George St., Newport. Tel. Newport 63018
Fleet St., Kingsway, Swansea. Tel. Swansea 50445



RUGBY INTERNATIONAL
FRANCE v. WALES
PARIS — 23rd March, 1963
3 DAYS £19.10.6

By Air From Cardiff ★ Transfers ★
All Airport And Local Taxes ★ B/B At
Hotel ★ Services Of CTS Hostess ★
Extra Days @ 1 Gn.

Leaflet with full information from:

5 CHURCH STREET,
CARDIFF
Tel. 24777



Read about

SATURDAY'S RUGBY
in Monday's

WESTERN MAIL

WESTERN METAL CO. L^{td}

**WESTERN METAL
(ENGINEERING) CO. L^{td}**

Buyers of All Factory
Residues and
Surplus Materials

Registered Office

5 GOLD TOPS,
NEWPORT, MON.
Tel. 62643

Works
PENARTH DOCK
Tel. 59433

CARDIFF		WASPS	
FROM			
1 A. PRIDAY—A. DREW	Full Back	P. V. CROOKS	1
2 C. EVANS—R. WILLS	Right Wing	B. H. G. WRIGHT	2
3 H. M. ROBERTS	Right Centre	W. TREADWELL	3
4 C. WILLIAMS	Left Centre	R. COLLIER	4
5 S. HUGHES—	Left Wing	A. C. B. HURST	5
G. WILLIAMS		F. E. J. HAWKINS	6
6 G. DAVIES	Outside Half	M. EARL	7
7 L. WILLIAMS—	Inside Half		
T. B. WILLIAMS		D. WILLS	8
8 H. NORRIS	Forwards	D. W. A. ROSSER	9
9 W. J. THOMAS		C. ASHBY	10
10 K. JONES—C. HOWE		M. J. CUTTER	11
11 K. ROWLANDS		P. REDRUP	12
12 G. DAVIES—J. SELWAY		H. KEITH	13
13 E. WILLIAMS		G. TAYLOR	14
14 J. PRICE—C. HOWE		T. CRACKWELL	15
15 D. HAYWARD—			
H. D. POWELL		Referee:	
L. Hewer, H. P. Morgan,		Mr. JOSEPH (Bridgend)	
G. T. Ellis, P. Thomas,			
H. Evans, D. J. Hickey.			



★ GET IT OUT TO
GWYN NICHOLLS & WINFIELD
Victoria Dry Cleaning Service
AND YOU'LL SCORE EVERY
TIME
LLANDAFF NORTH, CARDIFF
Telephone: Cardiff 72231/32



Try

**T.P. MARTIN
LIMITED**

The Camera Shop by the Castle Clock
9 CASTLE ST., CARDIFF. Tel: 21316

Make your touch-down at the
TENNIS COURT HOTEL
ST. JOHN'S SQUARE



A Rhymney Breweries house

WELSH GLASS WORKS LTD.

WHOLESALE GLASS MERCHANTS
&
GLAZING CONTRACTORS
MANUFACTURERS OF MIRRORS
Copper-backed by the most modern process
Plate Glass replacements promptly effected.
The largest stockholders in Wales.
CARDIFF Tel.: 31536. SWANSEA Tel.: 52189

M & B

It's

Marvellous Beer

RED & WHITE SERVICES LTD.

Head Office:

BULWARK,
CHEPSTOW,
Mon.

Telephone: 2326/7/8

Local Office:

CENTRAL
BUS STATION,
WOOD STREET,
CARDIFF

Telephone: 23691

TOURS AND EXCURSIONS

EXPRESS SERVICES

LOCAL SERVICES

PRIVATE HIRE

Specialists in Luxury Coach Travel

BRITISH RAILWAYS

SCOTLAND v. WALES
INTERNATIONAL RUGBY
FOOTBALL MATCH AT
EDINBURGH
SATURDAY, 2nd FEBRUARY
1963

Excursions have been arranged to
Edinburgh as follows:—

Friday Night, February 1st, 1963:
(8.05 p.m. Treherbert, calling at all
stations to Taffs Well, Cardiff
General; Cafeteria Car, Return
ex Edinburgh 11.40 p.m. (Princess
St.) Saturday, 2nd February.

*8.15 p.m. Bridgend, Pencoed,
Llanharan, Llantrisant, Cardiff
General, Newport; Cafeteria Car,
Return ex Edinburgh 12.10 a.m.
Sunday, 3rd February, 1963.

*7.00 p.m. Merthyr and all stations
to Abercynon, Pontypridd, Caer-
philly and Shrewsbury; Return
ex Edinburgh (Princess St.) at
1.20 a.m., Sunday, 3rd Feb-
ruary, 1963; Cafeteria Car.

Road feeder services to and from
Abercynon—Aberdare Branch.
Return fare from all stations shewn
above—

Second Class 72/6d.

(This fare may be subject to alteration)

*NOTE: Approximate times.

For full details apply to Stations,
Offices and Agencies.

You'll Feel Fine

on

FIVE

FIVE

It's brewed by

HANCOCKS



*There's a promise
in a glass of
MACKESON*

CARDIFF RUGBY FOOTBALL CLUB

WALES v. ENGLAND
AT CARDIFF ARMS PARK, JANUARY 19th, 1963

ENCLOSURE AND FIELD TICKETS

For the above game, Stand Season Ticket Holders who were not allo-
cated a ticket in the alphabetical system now obtaining, together with
Enclosure/Field Season Ticket Holders, may apply for an Enclosure or
Field Ticket.

Tickets will be on Sale from the Club House from 10 a.m. on January
7, 8, 9 on production of Slip "A", may be obtained by postal application
enclosing 5/- or 3/- and a stamped addressed envelope.

Applications should be clearly marked on top left hand corner
"ENCLOSURE" or "FIELD."

Hon. Secretary.

We hope the match is a
good one for 'good points'
do interest us both and after
the match you'll see many in
the furniture on show at
The Roath



42 CITY ROAD, CARDIFF

TELEPHONE 30421

Branches also at:
NEWPORT
BARRY DOCK
PONTYPRIDD

BARGOED
PONTYPOOL
FORT
ALNOY

ESB W VAJ
TQ88222P

TOUCH DOWN HERE FOR TYRES
★
KEN JONES (TYRES) LTD

3 Fitzalan Road, CARDIFF Tel. 32775

- ★ FREE FITTING — WHILE YOU WAIT
- ★ ALL LEADING MAKES SUPPLIED
- ★ FIRST QUALITY REMOULDS
- ★ OPEN SATURDAY AFTERNOON 2 — 4.30 p.m.
SUNDAY MORNING 9.30 — 12.0 NOON
- ★ WHEEL BALANCING SERVICE AVAILABLE
- ★ CONFIDENTIAL EASY PAYMENT SCHEME

JOHN MORGAN

(BUILDERS) LIMITED

BUILDING AND CIVIL ENGINEERING CONTRACTORS

REINFORCED CONCRETE AND PILING SPECIALISTS

CONTRACTORS TO H.M. GOVERNMENT

Registered Offices

NORTHUMBERLAND LODGE, 14 CATHEDRAL ROAD

Telegrams: "Jaymorgan." CARDIFF Telephone: 23681 (6 lines).

**168/9 TERMINAL HOUSE 52 GROSVENOR GARDENS, LONDON,
S.W.1.**

Telephone: London SLOane 0584 (4 lines).