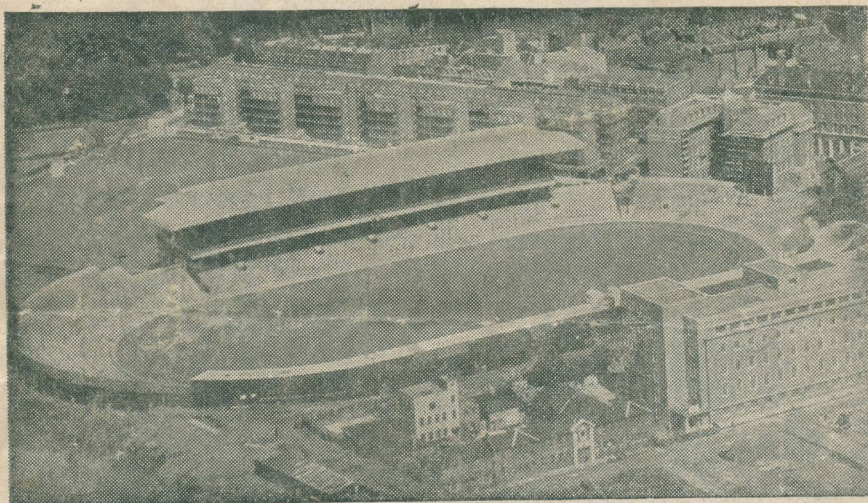


CARDIFF RUGBY FOOTBALL CLUB

SEASON



1957-58



CARDIFF ARMS PARK

CARDIFF

v.

WASPS

BOXING DAY · DECEMBER 26th · 1957

Kick-off 2.30 p.m.

OFFICIAL PROGRAMME · 3d.

CARDIFF v. WASPS

By the Editor

If ever we have been glad to see "Wasps" descend into our midst, they most certainly are of the type that will visit the Park this afternoon, and their main object will be to attack the Cardiff line in search of tries. We give our visitors a very hearty welcome, and extend to them the Good Will that the Festive Season is intended to convey.

The title of the Club, "Wasps," is certainly most intriguing, and our supporters will welcome particulars of one of the oldest and most famous of London Rugby Clubs. It was founded in 1866, and as far as we can find out from the records there are only about six or seven older rugby organisations in the country. The founders of the Club were Old Scholars of the Merchant Taylors School, who at the time were students at the University College Hospital in London.

The Wasps originally had black jerseys with amber hoops, but they were changed in 1873 to the present design. At least 10 teams are fielded weekly and a large number of International players have figured in their ranks.

We look forward to a rousing game of rugger today, played in typical Boxing Day spirit.

Last Saturday, with a side much depleted by Trial Match calls, the Cardiff Club played Rosslyn Park in London, who have an unbeaten record. Despite an unfortunate injury to Rex Willis, the Cardiff team put up an excellent show and drew 8 points each.

Tomorrow we are entertaining our friends the Watsonians on the Park, and we feel sure that an entertaining game awaits us.

Wales v. Wallabies

4th JANUARY, 1958.

Field Tickets for the above match are still available to Season Ticket Holders and may be obtained from the Club Office on production of slip "A" (1958), together with remittance of 3/-.

These tickets will be issued to Season Ticket Holders only.

Hon. Secretary.



What did you think of
this afternoon's game?

Why not match your views with those
of the experts who write for the

NEWS OF THE WORLD



J. F. EVEREST CATERERS

Telephone - PENTYRCH 326

CARDIFF RUGBY
FOOTBALL CLUB
GLAMORGAN COUNTY
CRICKET CLUB

WEDDINGS PRIVATE PARTIES BUFFET CATERING

EQUIPPED TO THE HIGHEST STANDARDS

GILES SPORTS DEPOTS.

Suppliers to Cardiff R.F.C., Newport R.F.C.,
Cross Keys R.F.C., Porthcawl R.F.C. and all
leading rugby clubs.

HENRY C. GILES & SON LTD.

★	★	52, ST. MARY STREET, CARDIFF	★	★
		Tel: CARDIFF 30155		
★	★	2-4, SKINNER STREET, NEWPORT	★	★
		Tel: NEWPORT 64026		

Ask the fellow next to you the way to the . . .

★ VICTORIA BALLROOM ★

for the best dancing entertainment in Cardiff.

Public dancing on

WEDNESDAY - FRIDAY - SATURDAY

Music by the "Belmont Radio Ten", leader: Jack Williams. Hammond Organ.
M.C.: DON GREY.

All 'Vic' productions are of the best. Telephone: Cardiff 30016.

WELSH HOSPITAL CRUSADERS



THE WORKERS' HOSPITAL SCHEME FOR WALES

Welsh Hospitals and Health Services ASSOCIATION

60 NEWPORT ROAD, CARDIFF. 'Phone—Cardiff 20461-2

BENEFITS ADDITIONAL & SUPPLEMENTARY
TO NATIONAL INSURANCE & HEALTH SERVICE

1—Cash Grants whilst patient is in Hospital. 2—Maternity Cash Benefits. 3—Convalescent and Rest Break Homes. 4—Local Authority Charges, Home Helps, etc. 5—Surgical, Optical and Dental Appliances. 6—advisory and Welfare Services.

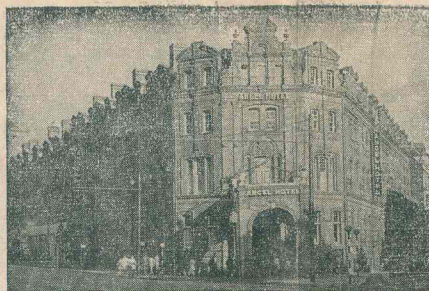
All for 6d. per week, deducted from wages. Individual Subscribers, £1 6s. per annum.
Apply to Glanville Davies, General Secretary, for brochure.

BIG NAMES IN BIG RUGBY

Read **JACK MATTHEWS**
and **W. E. N. DAVIS** in the

EMPIRE NEWS Sunday Chronicle

★ and every week a full report of the Cardiff match



Telephone—Cardiff 32633 5 lines

ANGEL HOTEL, CARDIFF

Enjoy Lunch in
Grill Room
Afternoon Tea
in the Lounge

"Overlooking
the Ground"

J. B. G. Thomas

keeps you in touch with
Rugby news and gossip in the
Western Mail

Always first with the latest sports facts

If you want a

Quick Snack . . .

GO TO THE DEYMEL
BUTTERY

For Luncheon

or High Tea . . .

CHOOSE THE SPACIOUS
RESTAURANT

at **David Morgan**
THE MAYES

DAVID MORGAN LTD., CARDIFF

CARDIFF

1 A. J. PRIDAY

5 H. NICHOLLS

4 A. BARTER

3 G. WELLS

2 G. JOHN

6 C. MORGAN

7 L. WILLIAMS

8 C. HOWE

9 G. BECKINGHAM

10 J. D. EVANS

11 K. JONES

12 M. GOUGH

13 C. D. WILLIAMS

14 E. THOMAS (Capt.)

15 D. J. HAYWARD

Full Back

Left Wing

Left Centre

Right Centre

Right Wing

Right Wing

Right Centre

Left Centre

Left Wing

Outside Half

Inside Half

Forwards



Get it out to
OWYN NICHOLLS & WINFIELD'S
DRY CLEANING SERVICE

and you'll score every time

LLANFAFF NORTH, CARDIFF • TELEPHONE 331 WHITCHURCH

WASPS

R. O'BRIEN

D. G. SIMMONDS

E. J. WOODWARD (Capt.)

G. CHILDS

S. WRIGHT

J. BURCHALL

R. J. KENT

I. ZAIDMAN

M. WETSON

G. J. BANDON

B. R. LOVEDAY

P. G. YARRANDON

R. E. SYRETT

D. WILLS

A. J. HERBERT

Referee:
Mr. A. WILLIAMS
(Newport)



for
SPEED,
ECONOMY
and
EFFICIENCY-
GAS
-to be sure

WALES GAS BOARD • CARDIFF UNDERTAKING

RHYMNEY &



CROSSWELLS

Make your touch-down at the

TENNIS COURT HOTEL

ST. JOHN'S SQUARE

★ ★ ON DRAUGHT OR IN BOTTLE ★ ★

Fly the DIRECT ROUTE from CARDIFF
to PARIS, BELFAST, MANCHESTER,
JERSEY, GUERNSEY, *GLASGOW,
*ISLE OF MAN.

*in association with B.E.A.

★ **CAMBRIAN**
AIRWAYS

Personal Enquiries from:
Air Terminal, Wood Street,
or your travel Agent; or
phone: Rhosse 331.



Mitchells & Butlers

"Good Honest Beer"

AT HOME OR AWAY—ALWAYS A WINNER

MITCHELLS & BUTLERS (South Wales) LTD., MILL PARADE
NEWPORT, Mon.

RED & WHITE SERVICES LTD.

Head Office
BULWARK,
CHEPSTOW,
Mon.

Telephone: 2326/7/8

Local Office:

CENTRAL
BUS STATION,
CARDIFF

Telephone: 23961

LOCAL SERVICES

LONG DISTANCE SERVICES

PRIVATE HIRE

TOURS AND EXCURSIONS

8, 10 & 15 DAY HOLIDAY TOURS

Specialists in Luxury Travel

RUGBY INTERNATIONAL.
ENGLAND v. WALES at
TWICKENHAM
SATURDAY, JANUARY 18th,
1958

A special programme of Day
Excursion trains has been arranged
to London (Paddington) as follows:—

Forward Early Saturday morning,
January 18th, Return Saturday night/
Early Sunday morning, January 18th,
and 19th:

From: Bridgend, Llantrisant
(Penygraig Branch connection),
Aberdare (Low Level), and all stations
to Cardiff (General), Merthyr Branch
connection. Treherbert and all
stations to Pontypridd (Maerdy
Branch connection). Rhymney and
all stations to Cardiff (General),
(Senghennydd and Barry Branch
connections).

For the convenience of organised
parties desiring to travel on Friday,
January 17th and return Sunday,
January 19th, special two/day
Excursions have also been arranged.
For further information please write
to:— Mr. H. S. JENKINS,

District Commercial Manager,
British Railways, Western Region,
Cymric Buildings, Cardiff Docks.

BRITISH RAILWAYS

WHAT A FINE COMBINATION



★
ELECTRIC
COOKING and
WATER HEATING
ALWAYS SCORE
ON CLEANLINESS
AND COST

★
EASY TERMS
AT YOUR
ELECTRICITY
SHOWROOM

SOUTH WALES ELECTRICITY BOARD

OUT FLY IN FRONT!



ELY ALES
THE BEST IN WALES

FIXTURES

Date	Club	F. A.	Date	Club	F. A.
1957			1958		
Sept 4—Cardiff & District.....	h	33-3	Jan. 4—Moseley.....	a	
7—France Centre.....	h	14-6	11—Bristol.....	h	
11—Walker's XV.....	h	6-3	18—London Welsh.....	a	
14—Bective Rangers.....	h	6-3	25—Cheltenham.....	a	
19—Pontypool.....	a	9-3			
21—Neath.....	h	14-0	Feb 8—Aberavon.....	a	
25—Ebbw Vale.....	a	3-3	15—Cheltenham.....	h	
28—Aberavon.....	h	17-8			
Oct. 3—Swansea.....	a	11-6	Mar. 1—Newport.....	a	
5—Newport.....	a	3-0	8—Bridgend.....	h	
9—Penarth.....	h	25-3	15—Newport.....	h	
12—Northampton.....	a	8-3	19—Penarth.....	a	
19—Newport.....	h	3-3	22—Coventry.....	a	
26—Cambridge.....	a	6-10	27—Neath.....	a	
Nov. 2—Oxford.....	h	11-8	31—Llanelli.....	a	
9—Llanelli.....	h	5-3			
16—Wasps.....	a	6-3	Apr. 5—Barbarians.....	h	
18—Bective Rangers.....	a	9-9	7—Harlequins.....	h	
23—Gloucester.....	h	12-0	8—Northampton.....	h	
30—Bristol.....	a	18-6	12—Penzance.....	a	
Dec. 7—Swansea.....	h	9-3	14—Camborne.....	a	
14—Australia.....	h	14-11	15—St. Ives.....	a	
21—Rosslyn Park.....	a	8-8	19—Bath.....	h	
26—Wasps.....	h		23—Bridgend.....	a	
27—Watsonians.....	h		26—Welsh Sevens.....	h	
28—Gloucester.....	a		30—Pontypool.....	h	

AFTER THE MATCH . . .

Relax in a "ROATH" Easy Chair

Makers of High Grade Comfortable Furniture for the whole Home for over 50 Years

"ROATH EASY TERMS" make Home Ownership Easy

Head Office:

The
ROATH
FURNISHING CO

CITY ROAD, CARDIFF
Telephone 30421

ALSO

COMMERCIAL ROAD, NEWPORT

Branches—Barry Dock, Ebbw Vale, Pontypridd, Bargoed, Pontypool, Port Talbot, Tradegar

Jones

MOBILE CRANES

a match for any load

A Product of The 600 Group of Companies

JOHN MORGAN

(BUILDERS) LIMITED

BUILDING AND CIVIL ENGINEERING CONTRACTORS

REINFORCED CONCRETE AND PILING SPECIALISTS

CONTRACTORS TO H.M. GOVERNMENT

Registered Offices:

NORTHUMBERLAND LODGE, 14 CATHEDRAL ROAD

Telegrams: "Jaymorgan" **CARDIFF** *Telephone:* 23681 (6 lines).

**and at 130 COTTON EXCHANGE BUILDINGS, OLD HALL STREET,
LIVERPOOL 3**

Telephone: CENTral 8252, and

**168/9 TERMINAL HOUSE, 52 GROSVENOR GARDENS, LONDON,
S.W.1.**

Telephone: London SLOane 0384 (4 lines), and

18 THE HORSEFAIR, BRISTOL.

Telephone: 27817.