

**CARDIFF**

**FRANCE CENTRE**

***Cardiff Arms Park***

Saturday, September 7th

1957

**KICK - OFF 3-30 p.m.**

**SOUVENIR PROGRAMME - Price 6d.**

# FRANCE CENTRE TOURING PARTY

## OFFICIALS AND PLAYERS.

### Officials:

Mr. Lescombes, *Vice-Président et Sélectionneur du Comité du Limousin.*

Mr. Piquet, *Comité d'Auvergne.*

### Full-Back:

21 Couly (Tulle). Age 19, Ht. 5ft. 9ins., Wgt. 11st. 6lbs. France  
"School."

### Wings:

19 Sola (Brive). Age 25, Ht. 5ft. 8ins., Wgt. 12st.

20 Pascarel (Tulle). Age 24, Ht. 5ft. 10ins., Wgt. 12st. 4lbs.  
Centre 57 (Auvergne + Limousin).

### Centres:

16 Jean Colombier (St.-Junien), *Vice-Captain.* Age 29, Ht. 5ft. 9ins.  
Wgt. 11st. 12lbs. France 52 (3 caps).

17 Lalanne (Tulle). Age 29, Ht. 5ft. 9ins., Wgt. 11st. 12lbs.

18 Raucoule (Brive). Age 23, Ht. 5ft. 8ins., Wgt. 11st.

### Outside Halves:

14 Davidou (Guéret). Age 20, Ht. 5ft. 10ins., Wgt. 12st. France  
"B" 57.

15 Claude Colombier (St.-Junien). Age 26, Ht. 5ft. 8ins., Wgt.  
11st. 12lbs. French Trialist 55.

### Scrum Half:

13 Maura (Brive). Age 25, Ht. 5ft. 5ins., Wgt. 10st. 9lbs.

### Props:

3 Domenech (Brive), *Captain.* Age 24, Ht. 5ft. 9½ins., Wgt.  
14st. 4lbs. France 57 (22 caps).

4 Merckx (Tulle). Age 28, Ht. 5ft. 9½ins., Wgt. 15st. 2lbs. French  
Trialist 55-56-57.

5 Farfart (Brive). Age 28, Ht. 5ft. 9½ins., Wgt. 14st. 6lbs.

### Hookers:

1 Markarian (Brive). Age 27, Ht. 5ft. 8ins., Wgt. 11st. 12lbs.  
France "B" 54.

2 Gadalou (Tulle). Age 22, Ht. 5ft. 8ins., Wgt. 13st. 2lbs. Centre  
57 (Auvergne + Limousin).

### Second Row:

6 Faye (Limoges). Age 24, Ht. 6ft. 3ins., Wgt. 16st. 10lbs.

7 Ceaux (Tulle). Age 33, Ht. 6ft., Wgt. 16st. Centre 57  
(Auvergne + Limousin).

8 Survielle (Brive). Age 31, Ht. 6ft. 1½ins., Wgt. 15st. French  
Trialist 50-51-52.

### Lock:

9 Lefebvre (Brive). Age 20, Ht. 6ft., Wgt. 13st. France "School"  
54 and 55.

### Wing-Forwards:

10 Baccou (Tulle). Age 27, Ht. 6ft., Wgt. 13st. 11lbs. French  
Trialist 54.

11 Brudieux (Tulle). Age 28, Ht. 5ft. 11ins., Wgt. 13st. 4lbs.

12 Gounet (Brive). Age 22, Ht. 5ft. 9½ins., Wgt. 13st.



GWYN PORTER

*Chairman Cardiff R.F.C.*



LYN WILLIAMS

*Vice-Chairman C.R.F.C.*



EDDIE THOMAS

*Captain 1st XV.*

## WELCOME to FRANCE CENTRE XV.

By

Mr. G. L. PORTER, *Chairman.*

The Cardiff Rugby Club extends a hearty welcome to its French visitors.

It is seldom that we have the pleasure of welcoming a team making its first appearance on our ground, but that distinction falls to our lot this afternoon and we are sure that our patrons—sportsmen as they are—will give the France Centre XV a stirring reception worthy of the occasion and so make their debut one that will carry with it cherished memories for a long time to come.

Rugger men all over the world regard Cardiff Arms Park as one of the shrines of the game and it is the ambition of all to play on its famous turf.

We feel sure that those of our visitors who play there for the first time today will fulfil one of their greatest ambitions.

May our visitors take back with them to France happy memories of their visit to Wales.

Once again we say—WELCOME TO CARDIFF.

EQUIPPED TO THE HIGHEST STANDARDS

## GILES SPORTS DEPOTS.

Suppliers to Cardiff R.F.C., Newport R.F.C.,  
Cross Keys R.F.C., Porthcawl R.F.C. and all  
leading rugby clubs.

HENRY C. GILES & SON LTD.

★ ★ 52, ST. MARY STREET, CARDIFF ★ ★  
Tel: CARDIFF 30155

★ ★ 2-4, SKINNER STREET, NEWPORT ★ ★  
Tel: NEWPORT 64026

# Cardiff v. France Centre XV.

By the Editor

The highlight of this season as far as Continental visitors are concerned comes today with the visit to Cardiff Arms Park of the France (Centre) XV. This team is drawn from the two central provinces of France, Auvergne and Limousin and includes French international players, France "B" players, trialists and former schoolboy caps.

This French side has for several seasons past enjoyed a short tour of Wales playing games against Neath but this year the tour has been extended and the full programme will include games against Neath, Pontypool and Birkenhead Park. After the latter game they depart for Ireland where further matches will be played. These games in England, Ireland and Wales will give them invaluable experience for the tour they make to South Africa during the close season.

We in Cardiff are becoming accustomed to visits from Continental sides and today's visitors are the fourth French team, apart from the French International side, to play at the Arms Park since the war. The other teams were the combined Nantes and Cognac (twice) and the Nantes Veterans who played the Cardiff Veterans in 1952.

The captain of our visitors is France's No. 1 front row forward, Andree Domenech who has played 22 times for his country. Several of the side have appeared in the France "B" team and the party will be managed by Messrs. Lescombes and Piquet.

The touring party arrived in Wales on Tuesday and made their headquarters at Neath where they have made many friends.

The opening game of the season against Cardiff and District Rugby Union was played on Wednesday

last and resulted in a win for the Club by 33 points to 3. The District side, one of the best combinations fielded by them for many years, was most unlucky in that two of its members were injured and had to receive hospital treatment. Until the time that their side was so seriously depleted, the District had given their more experienced opponents an excellent game and there was little to choose between the two sides.

The Cardiff Skipper, Eddie Thomas, made a very sporting gesture when he offered the services of one of his side to the District to make 14 a-side and we had the unusual experience of seeing Peter Goodfellow, last year's captain, playing in the wing-forward position against his own club.

We doubt if this unusual procedure has ever been adopted on the Arms Park before and there was much talk and thumbing of rule books in the Clubroom after the match. Even the oldest of committee and supporters discussing the incident had not seen such an occurrence before.

Today's Cardiff side shows a few changes from that which played in the first match of the season. It includes a newcomer in the person of Malcolm Smith at open side wing forward, who has previously played for Cheltenham.

We feel sure that today's game, with its international flavour, will provide first-class entertainment for all and if this French side are representative of their country's rugby, then the ball will be given "plenty of air," and in this they will be ably assisted by Cardiff who have always been staunch advocates of this type of play.

Let us then look forward to a great game and welcome our visitors in the traditional Cardiff manner.



What did you think of  
this afternoon's game?

Why not match your views with those  
of the experts who write for the

**NEWS OF THE WORLD**



## Special Attraction

— Next Home Match —

Wednesday, 11th September, 1957. K.O. 6 p.m.

## CARDIFF v. WALKER'S XV.

Walker's XV is a Touring Side playing Cardiff, Newport, Swansea and Llanelli.  
It will include English, Irish and French International players.



THE WORKERS' HOSPITAL SCHEME FOR WALES

### Welsh Hospitals and Health Services ASSOCIATION

60 NEWPORT ROAD, CARDIFF. Phone—Cardiff 20461-2

**BENEFITS ADDITIONAL & SUPPLEMENTARY  
TO NATIONAL INSURANCE & HEALTH SERVICE**

1—Cash Grants whilst patient is in Hospital. 2—Maternity Cash Benefits. 3—Convalescent and Rest Break Homes. 4—Local Authority Charges, Home Helps, etc. 5—Surgical, Optical and Dental Appliances. 6—Advisory and Welfare Services.

All for 6d per week, deducted from wages. Individual Subscribers, £1 per annum.  
Apply to Glanville Davies, General Secretary, for brochure.

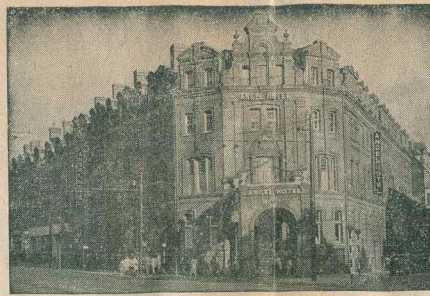
BIG NAMES IN BIG RUGBY

Read **JACK MATTHEWS**  
and **W. E. N. DAVIS** in the

# EMPIRE NEWS

## Sunday Chronicle

★ and every week a full report of the Cardiff match



Telephone—Cardiff 32633 (5 lines)

### ANGEL HOTEL, CARDIFF

•  
Enjoy Lunch in  
Grill Room  
Afternoon Tea  
in the Lounge

•  
"Overlooking  
the Ground"

## J. B. G. Thomas

keeps you in touch with  
Rugby news and gossip in the  
**Western Mail**

Always first with the latest sports facts

If you want a

Quick Snack . . .

GO TO THE DEYMEL

## BUTTERY

For Luncheon

or High Tea . . .

CHOOSE THE SPACIOUS

## RESTAURANT

at

*David Morgan*  
THE HAYES

DAVID MORGAN LTD., CARDIFF

### CARDIFF

1	A. PRIDAY	Full Back
5	A. N. OTHER	Left Wing
4	G. WELLS	Left Centre
3	G. GRIFFITHS	Right Centre
2	G. JOHN	Right Wing
6	C. MORGAN	Outside Half
7	L. WILLIAMS	Inside Half
8	C. HOWE	Forwards
9	G. BECKINGHAM	
10	J. D. EVANS	
11	W. R. EVANS	
12	M. COLLINS	
13	E. THOMAS (Capt.)	
14	P. GOODFELLOW	
15	M. SMITH	



Referee:  
Mr. L. Griffin (Abertillery).

### FRANCE CENTRE

COULY	21
GADALOU	2
RAUCOULE	18
COLOMBIER, JEAN	16
SOLA	19
DAVIDOU	14
COLOMBIER, CLAUDE	15
DOMENECH (Capt.)	3
MARKARIAN	1
FARFART	5
FAYE	6
SURVIELLE	8
BACCOU	10
LEFEVRE	9
GOUNET	12



*Mr. Thom scores again!*

for  
**SPEED,**  
**ECONOMY**  
and  
**EFFICIENCY-**  
**GAS**  
-to be sure

WALES GAS BOARD · CARDIFF UNDERTAKING

Get it out to  
**GWYN NICHOLLS & WINFIELD'S**  
**DRY CLEANING SERVICE**  
and you'll score every time  
LLANDAFF NORTH, CARDIFF · TELEPHONE 331 WHITCHURCH

RHYMNEY &



CROSSWELLS

Make your touch-down at the

## TENNIS COURT HOTEL

ST. JOHN'S SQUARE

★ ★ ON DRAUGHT OR IN BOTTLE ★ ★

Fly the DIRECT ROUTE from CARDIFF  
to PARIS, BELFAST, MANCHESTER,  
JERSEY, GUERNSEY, \*GLASGOW,  
\*ISLE OF MAN.

\*in association with B.E.A.

## CAMBRIAN AIRWAYS

Personal Enquiries from:  
Air Terminal, Wood Street,  
or your travel Agent; or  
phone: Rhosse 331.



## Mitchells & Butlers

"Good Honest Beer"

AT HOME OR AWAY—ALWAYS A WINNER

MITCHELLS & BUTLERS (South Wales) LTD., MILL PARADE  
NEWPORT, Mon.

# RED & WHITE SERVICES LTD.

Head Office  
BULWARK,  
CHEPSTOW,  
Mon.

Telephone: 2326/7/8

Local Office:  
CENTRAL  
BUS STATION,  
CARDIFF

Telephone: 2396

LOCAL SERVICES  
LONG DISTANCE SERVICES  
PRIVATE HIRE  
TOURS AND EXCURSIONS  
8, 10 & 15 DAY HOLIDAY TOURS

*Specialists in Luxury Travel*

## Supporters Notes

The season has commenced once again, and we feel sure all supporters wish the Boys in Blue and Black under Skipper Eddie Thomas a very successful season.

**Hospital Broadcasts.** We are again carrying out our duties for

this essential service. We did not quite achieve our target last season mainly due to the lack of collectors. Will you help us to carry on.

Collectors are urgently needed.

**Trips.** Details will be announced later of trips to all away games, including the Internationals at Twickenham and Dublin.

## CARDIFF RUGBY FOOTBALL CLUB

SEASON 1957/58

Season Tickets are now available, and may be obtained from the Club Offices at the following prices:—

**NORTH or SOUTH GRAND STAND**

(Reserved and Numbered) £2.5.0.

**ENCLOSURE** ..... £1.10.0      **FIELD** ..... £1.0.0

When applying for a Grand Stand Ticket please state whether North or South Stand.

Application must be accompanied by Remittance, made payable to the Cardiff Athletic Club or Bearer, and stamped addressed envelope.

**J. F. EVEREST**  
**CATERERS**

Telephone — PENTYRCH 326

**CARDIFF RUGBY  
FOOTBALL CLUB**  
**for**  
**GLAMORGAN COUNTY  
CRICKET CLUB**

WEDDINGS PRIVATE PARTIES BUFFET CATERING

**RUGBY INTERNATIONAL.**  
ENGLAND v. WALES at  
TWICKENHAM  
SATURDAY, JANUARY 18th,  
1958

A special programme of Day Excursion trains has been arranged to London (Paddington) as follows:—

Forward Early Saturday morning, January 18th, Return Saturday night/Early Sunday morning, January 18th, and 19th:

From: Bridgend, Llantrisant (Penygraig Branch connection), Aberdare (Low Level), and all stations to Cardiff (General), Merthyr Branch connection. Treherbert and all stations to Pontypridd (Maerdy Branch connection). Rhymney and all stations to Cardiff (General), (Senghenydd and Barry Branch connections).

For the convenience of organised parties desiring to travel on Friday, January 17th and return Sunday, January 19th, special two/day Excursions have also been arranged. For further information please write to:—

Mr. H. S. JENKINS,  
District Commercial Manager,  
British Railways, Western Region,  
Cymric Buildings, Cardiff Docks.

## WHAT A FINE COMBINATION



★  
ELECTRIC  
COOKING and  
WATER HEATING  
ALWAYS SCORE  
ON CLEANLINESS  
AND COST

★  
EASY TERMS  
AT YOUR  
ELECTRICITY  
SHOWROOM

SOUTH WALES ELECTRICITY BOARD

BRITISH RAILWAYS



THE CARDIFF XV. 1956/57



### FIXTURES

Date	Club	F. A.	Date	Club	F. A.
1957			1958		
Sept. 4	Cardiff & District	h 33-3	Jan. 4	Moseley	a
" 7	France Centre	h	" 11	Bristol	h
" 11	Walker's XV	h	" 18	London Welsh	a
" 14	Bective Rangers	h	" 25	Cheltenham	a
" 19	Pontypool	a	Feb. 8	Aberavon	a
" 21	Neath	h	" 15	Cheltenham	h
" 25	Ebbw Vale	a	Mar. 1	Newport	a
" 28	Aberavon	h	" 8	Bridgend	h
Oct. 3	Swansea	a	" 15	Newport	h
" 5	Newport	a	" 19	Penarth	a
" 9	Penarth	h	" 22	Coventry	a
" 12	Northampton	a	" 27	Neath	a
" 19	Newport	h	" 31	Llanelly	a
" 26	Cambridge	a	Apr. 5	Barbarians	h
Nov. 2	Oxford	h	" 7	Harlequins	h
" 9	Llanelly	h	" 8	Northampton	h
" 16	Wasps	a	" 12	Penzance	a
" 18	Bective Rangers	a	" 14	Camborne	a
" 23	Gloucester	h	" 15	St. Ives	a
" 30	Bristol	a	" 19	Bath	h
Dec. 7	Swansea	h	" 23	Bridgend	a
" 14	Australia	h	" 26	Welsh Sevens	h
" 21	Rosslyn Park	a	" 30	Pontypool	h
" 26	Wasps	h			
" 27	Watsonians	h			
" 28	Gloucester	a			

### AFTER THE MATCH . . .

Relax in a "ROATH" Easy Chair

Makers of High Grade Comfortable Furniture for the whole Home for over 50 Years

"ROATH" EASY TERMS" make Home Ownership Easy

Head Office:

*The*  
**ROATH**  
FURNISHING CO

**CITY ROAD, CARDIFF**  
Telephone 30421

ALSO  
**COMMERCIAL ROAD, NEWPORT**

Branches—Barry Dock, Ebbw Vale, Pontypridd, Bargoed, Pontypool, Port Talbot, Tredegar

**Jones**

**MOBILE CRANES**

*a match for any load*

**A Product of The 600 Group of Companies**

**JOHN MORGAN**

(BUILDERS LIMITED)

**BUILDING AND CIVIL ENGINEERING CONTRACTORS**

**REINFORCED CONCRETE AND PILING SPECIALISTS**

*CONTRACTORS TO H.M. GOVERNMENT*

*Registered Offices:*

**NORTHUMBERLAND LODGE, 14 CATHEDRAL ROAD**

*Telegrams: "Jaymorgan"      CARDIFF      Telephone: 23681 (6 lines).*

**and at 130 COTTON EXCHANGE BUILDINGS, OLD HALL STREET,  
LIVERPOOL 3**

*Telephone: CENTral 8252, and*

**128/9 TERMINAL HOUSE, 52 GROSVENOR GARDENS, LONDON,  
S.W.1.**

*Telephone: London SLOane 0384 (4 lines), and*

**18 THE HORSEFAIR, BRISTOL.**

*Telephone: 27817.*