

# CARDIFF RUGBY FOOTBALL CLUB

SEASON



1956-57



**CARDIFF ARMS PARK**

**CARDIFF**

v.

**ABERAVON**

**SATURDAY — SEPTEMBER 22nd, 1956**

Kick-off 3.30 p.m.

**OFFICIAL PROGRAMME - 3d.**

# The Wizards are here!

By THE EDITOR.

Here it is! The first of the top-line duels at the Cardiff Arms Park this season. And no more welcome visitors than the unbeaten "Wizards" with their clever skipper Cliff Ashton waving the wand that has produced sparkling open football so far in Aberavon's impressive start to the Rugby season. Unconquered Cardiff are ready for the challenge. We know Ashton's men won at the Arms Park last season. But NO ONE knows—and few are prepared to hazard a guess—what the outcome of today's great game will be!

Even though the match inevitably will be a keen tussle of tactics, there is some good open play to be expected with relish for both teams know the value of the game in its primary sense—to handle the ball. Aberavon have hit the headlines. Their speed and mobility makes their forwards one of the most dangerous packs in Wales. Llanelly's heavier men failed to hold them. Can Cardiff's much-maligned eight succeed? We shall soon know.

The men to watch in this Aberavon side are full back Ross Richards, sound and steady; sprinter John Collins on the right wing, the man who beat Cardiff last year; promising centre Bill Pascoe; tricky scrum half Tony O'Connor and his bustling name-sake, Rory, on the blind-side of the scrum; and of course, fly-half Ashton, thrustful runner, shrewd punter and grub-kicker. They will all help provide spectacle and thrills.

This will be Cardiff's hardest test so far. But remembering their brilliant achievement in winning at Leicester last Monday with a make-shift team, we can expect even greater efforts this afternoon. Peter Goodfellow's men know the task in hand. And there are the names to match the up-and-coming Aberavon boys. Watch Alan Friday, waiting for a chance to kick more goals with his easy assurance that is bringing him under the "Big Five's" eyes; the "new" wingman, Glyn John, who shone at Leicester; loping Lloyd Williams, versatile half-back who could be opening a new chapter to his rigger career in the outside position; the "old fox" Rex Willis, still a master at the base of the scrum, inspiring his pack to provide the quick ball Cardiff want.

Of course, Cardiff's forwards hold the key. Skipper Goodfellow and his men are going to show Aberavon just how the ball should be heeled—or taken through with a rush of blue and black jerseys to set the heart pounding by the charge. Malcolm Collins, lord of the line-out, Geoff Beckingham, ruler of the "strike"—two key men on whom Goodfellow will rely. But essentially with Cardiff it is team-work. It will be again today.

Cardiff came back from the Midlands with a 100 per cent. record. Magnificent! The team deserve the fullest praise. To conquer powerful Coventry and then put it over the "Tigers" was no small achievement. There was lanky Howard Nicholls "relegated" to serve with the

## J. F. EVEREST CATERERS for

Telephone — PENTYRCH 326

CARDIFF RUGBY  
FOOTBALL CLUB  
GLAMORGAN COUNTY  
CRICKET CLUB

WEDDINGS PRIVATE PARTIES BUFFET CATERING

"dull eight" as a wing-forward; Lloyd Williams, of course, at outside-half, partnered by promising R.A.F. Serviceman, Leo Karseras; and Glyn "Jinker" John on the wing. Imagine the astonished gasp that would have greeted this line-up had they slouched out of the Arms Park dressing rooms to play on their home ground! At least we are prepared for strange happenings after the Leicester match. But it would be a shock! Talking of shocks, I wonder if that is what is in store for Aberavon today? Good luck to the teams, anyway.

### SUPPORTERS' NOTES.

We extend a warm welcome to our friends from Aberavon, and look forward to the pleasure of their company after today's game. We are delighted at the success of the Wizards this season, and feel sure they will continue to entertain us with some bright, open rugby this afternoon. And may the better side win.

**Pontypool v. Cardiff.** This game will be played next Thursday evening, and it is hoped to run a coach, if sufficient support is forthcoming. Hand in your name today and obtain full details.

**Supporters' Rugby Film Night.** We shall be entertaining the Halifax players and supporters on Friday evening, 12th October in the Grand Hotel, when we have arranged for the film "Lions at

Play" to be shown. Accommodation is limited, and members interested in attending should obtain their tickets (2/- each), from members of the Committee. Avoid being disappointed by obtaining your ticket now.

**Bristol v. Cardiff.** This match will be played at Ashton Gate Ground on Wednesday evening, October 24th, kick-off 7.45 p.m. It is anticipated that a special evening excursion will be run, and members interested in seeing this game, which will be played under floodlight, should hand in their names to the Supporters' Box as soon as possible.

**Harlequins v. Cardiff.** For the third successive season, Cardiff play a floodlit match at the White City Stadium on Tuesday, 30th October, 1956. Special Half-Day excursion will be run, leaving Cardiff at 3.0 p.m., returning in the 1.0 a.m. from Paddington, at a fare of 19/6d. A limited number of tickets for this game are available at 4/-; 6/-; 8/6 and 11/6d.

**Hospital Broadcast Scheme.** Special thanks to the commentators who turn up regularly at each match to ensure that the service to the hospitals is fully maintained. Thanks also to the Cardiff Committee for the facilities afforded us to continue with this good work. All we now need is greater support from the members and rugby followers generally.

Next Home Game—

**LLANELLY** Saturday, Sept. 29  
Kick-off 3.30 p.m.

THE WORKERS' HOSPITAL SCHEME FOR WALES



## Welsh Hospitals and Health Services ASSOCIATION

60 NEWPORT ROAD, CARDIFF. Phone—Cardiff 20461-2

BENEFITS ADDITIONAL & SUPPLEMENTARY  
TO NATIONAL INSURANCE & HEALTH SERVICE

1—Cash Grants whilst patient is in Hospital. 2—Maternity Cash Benefits. 3—Convalescent and Rest Break Homes. 4—Local Authority Charges, Home Help, etc. 5—Surgical, Optical and Dental Appliances. 6—Advisory and Welfare Services.

All for 4d. per week, deducted from wages. Individual Subscribers, £1 per annum.  
Apply to Glauville Davies, General Secretary, for brochure.



What did you think of  
this afternoon's game?

Why not match your views with those  
of the experts who write for the

**NEWS OF THE WORLD**

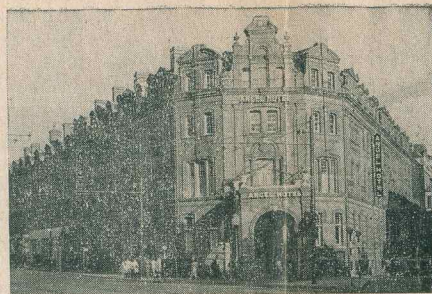


BIG NAMES in BIG RUGBY

Read **JACK MATTHEWS**  
and **W. E. N. DAVIS** in the

# EMPIRE NEWS Sunday Chronicle

★ and every week a full report of the Cardiff match



Telephone—Cardiff 32633 (5 lines)

## ANGEL HOTEL, CARDIFF

Enjoy Lunch in  
Grill Room  
Afternoon Tea  
in the Lounges

“Overlooking  
the Ground”



For prompt service and supplies of Regent  
Fuels and lubricants get in touch with . . .

**REGENT OIL COMPANY LTD.,**  
FERRY ROAD, GRANGETOWN, CARDIFF  
Telephone 28746

If you want a

Quick Snack . . .

GO TO THE DEYMEL

## BUTTERY

For Luncheon

or High Tea . . .

CHOOSE THE SPACIOUS

## RESTAURANT

at *David Morgan*  
THE HAYES

DAVID MORGAN LTD., CARDIFF

### CARDIFF

- |    |                      |              |
|----|----------------------|--------------|
| 1  | A. PRIDAY            |              |
| 5  | H. NICHOLLS          | Left Wing    |
| 4  | *G. GRIFFITHS        | Left Centre  |
| 3  | *G. WELLS            | Right Centre |
| 2  | *G. JOHN             | Right Wing   |
| 6  | LLOYD WILLIAMS       | Outside Half |
| 7  | *W. R. WILLIS        | Inside Half  |
| 8  | C. HOWE              | Forwards     |
| 9  | *G. BECKINGHAM       |              |
| 10 | J. D. EVANS          |              |
| 11 | M. COLLINS           |              |
| 12 | M. GOUGH             |              |
| 13 | E. THOMAS            |              |
| 14 | P. GOODFELLOW (capt) |              |
| 15 | E. LEWIS             |              |

Full Back

Left Wing      Right Wing  
Left Centre      Right Centre  
Right Centre      Left Centre  
Right Wing      Left Wing

Outside Half  
Inside Half

Forwards



\* Internationals

### ABERAVON

- |                   |    |
|-------------------|----|
| R. RICHARDS       | 1  |
| J. COLLINS        | 2  |
| KEITH JONES       | 3  |
| W. PASCOE         | 4  |
| RAY JONES         | 5  |
| G. ASHTON (capt.) | 6  |
| T. O'CONNOR       | 7  |
| L. CUNNINGHAM     | 8  |
| K. JAMES          | 9  |
| H. THOMAS         | 10 |
| V. CURTIS         | 11 |
| N. CURTIS         | 12 |
| R. O'CONNOR       | 13 |
| R. HAYNES         | 14 |
| PETER JONES       | 15 |

Referee:

Mr. O. MORGAN (Treorchy)



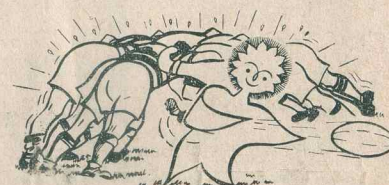
Get it out to  
**GWYN NICHOLLS & WINFIELD'S**  
DRY CLEANING SERVICE

and you'll score every time

LLANDAFF NORTH, CARDIFF • TELEPHONE 331 WHITCHURCH



## SPEED and



## PRECISION

IN COOKING

MEANS

# GAS

Automatic • Easy • Economical

See the new Cookers at the  
Showrooms. Hire Purchase  
and Credit Sale terms available.

W.G.B.-CARDIFF GAS UNDERTAKING

RHYMNEY & CROSSWELLS



FOR

## DRAUGHT & BOTTLED BEERS

## \* FLY CAMBRIAN

Regular Services operate from Rhose Airport to

JERSEY, GUERNSEY, PARIS, NICE, DINARD,  
LIVERPOOL and HAVERFORDWEST.

Full Information from CAMBRIAN BOOKING OFFICE, RHOSE AIRPORT.

Telephone: **BARRY 2100**

## CAMBRIAN AIRWAYS

## Mitchells & Butlers

“Good Honest Beer”

AT HOME OR AWAY—ALWAYS A WINNER

MITCHELLS & BUTLERS (South Wales) LTD., MILL PARADE  
NEWPORT, Mon.

# RED & WHITE SERVICES LTD.

Head Office:  
BULWARK,  
CHEPSTOW,  
Mon.  
Telephone: 2326/7/8

Local Office:  
CENTRAL  
BUS STATION,  
CARDIFF  
Telephone: 23961

LOCAL SERVICES  
LONG DISTANCE SERVICES  
PRIVATE HIRE  
TOURS AND EXCURSIONS  
8, 10 & 15 DAY HOLIDAY TOURS

*Specialists in Luxury Travel*

## UNDER FLOODLIGHTS

**A Date to Note**

**Wed., October 24,  
1956**

Kick-Off 7.45 p.m.

SPECIAL RUGBY MATCH

# BRISTOL

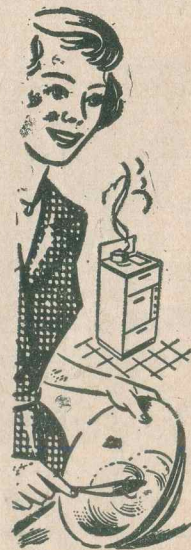
v

# CARDIFF

At ASHTON GATE

★ Watch For Further Details

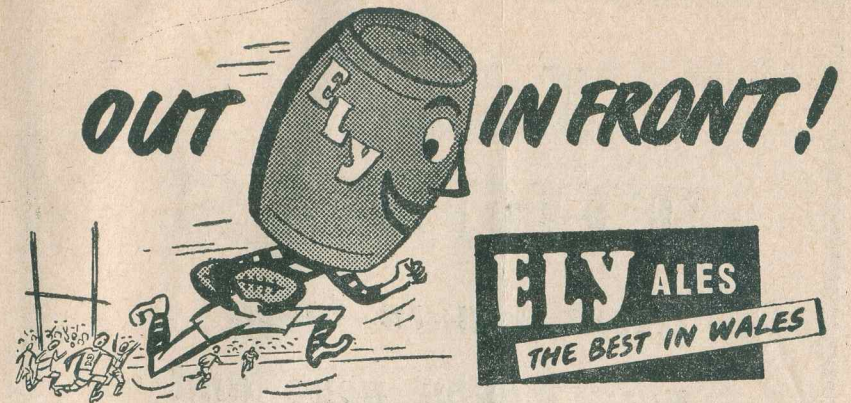
## WHAT A FINE COMBINATION



★  
ELECTRIC  
COOKING and  
WATER HEATING  
ALWAYS SCORE  
ON CLEANLINESS  
AND COST

★  
EASY TERMS  
AT YOUR  
ELECTRICITY  
SHOWROOM

SOUTH WALES ELECTRICITY BOARD



### FIXTURES

Date	Club	F. A.	Date	Club	F. A.
1956			Dec. 29	Ebbw Vale	h
Sept. 1	Germany	h 25-0			
" 5	Cardiff & District	h —	1957		
" 8	Penarth	h 26-5	Jan. 1	Watsonians	a —
" 12	Bridgend	h 28-5	" 5	Moseley	a —
" 15	Coventry	a 14-3	" 12	Bristol	h —
" 17	Leicester	a 18-9	" 19	Bath	a —
" 22	Aberavon	h —	" 26	Aberavon	a —
" 27	Pontypool	a —	Feb. 2	Cheltenham	h —
" 29	Llanelly	h —	" 9	London Welsh	h —
Oct. 3	Italy	h —	" 16	Newport	a —
" 6	Newport	a —	" 23	Llanelly	a —
" 10	Swansea	h —	Mar. 2	Newport	h —
" 13	Halifax	h —	" 9	Cheltenham	a —
" 15	Bective Rangers	h —	" 16	Coventry	h —
" 20	Cambridge	h —	" 23	Gloucester	h —
" 27	Neath	h —	" 30	Neath	a —
Nov. 3	Oxford	a —	April 3	Penarth	a —
" 10	Newport	h —	" 6	Pontypool	h —
" 17	Wasps	a —	" 10	Bridgend	a —
" 24	Blackheath	h —	" 13	Gloucester	a —
Dec. 1	Swansea	a —	" 20	Barbarians	h —
" 8	Harlequins	a —	" 22	Harlequins	h —
" 15	Rosslyn Park	h —	" 23	Northampton	h —
" 22	Bristol	a —	" 27	Penzance	a —
" 26	Wasps	h —	" 29	Camborne	a —
" 27	Watsonians	h —	" 30	St. Ives	a —

**AFTER THE MATCH.....**

**Relax in a "Roath" Easy Chair**

Makers of High Grade Comfortable Furniture for the whole Home for over  
50 Years

"ROATH EASY TERMS" make Home Ownership Easy

**The  
ROATH  
FURNISHING CO**

Head Office:  
**CITY ROAD, CARDIFF**  
Also Telephone 30421  
Commercial Road, Newport

Branches—Barry Dock Ebbw Vale, Pontypridd, Bargoed, Pontypool, Port Talbot, Tredegar.

# J. B. G. THOMAS

*Keeps you in touch  
with Rugby news and  
gossip in the*

## WESTERN MAIL

*Always first with the latest sports facts*

### South Wales Division R.N.V.R.

IF YOU ARE KEEN ON THE SEA

JOIN YOUR OWN  
R.N.V.R. DIVISION

WEEKEND CRUISES IN

H.M.S. "ST. DAVID"

A MODERN COASTAL MINESWEEPER  
MARCH TO SEPTEMBER

★

For Information Apply—

THE COMMANDING OFFICER,  
H.M.S. "CAMBRIA," 245, EAST DOCK, CARDIFF.  
Telephone 27710.