



Cardiff

rugby club

MAIN SPONSORS – THE BRENT WALKER GROUP PLC



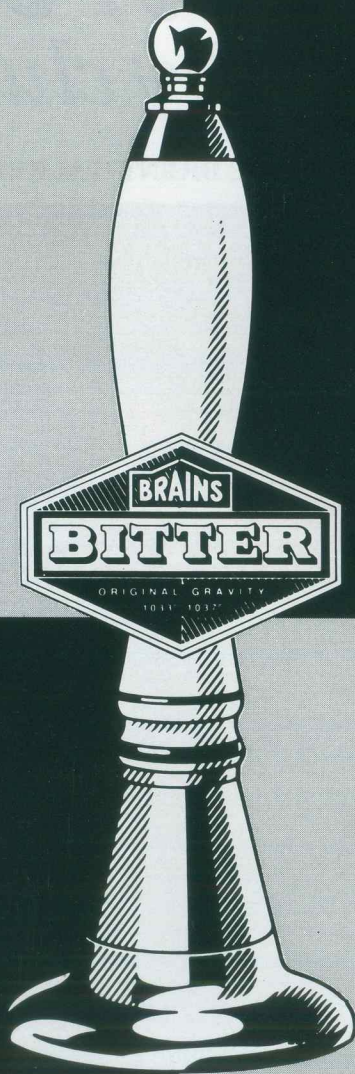
at The Cardiff Arms Park this afternoon . . .

EBBW VALE

Saturday, 2nd May, 1992
Kick-Off 2.30 p.m.

OFFICIAL
PROGRAMME

50p



S.A. BRAIN & COMPANY LIMITED WISH
CARDIFF RFC A SUCCESSFUL SEASON

it's Brains you want!



Cardiff v. Ebbw Vale

SATURDAY 2nd MAY, 1992

KICK-OFF 2.30p.m.

VOL. 1 ISSUE 20

Hello there, all you jovial supporters of the Blue and Blacks, who only a fortnight ago were on the edge of mass suicide, insurrection or resignation. It's amazing what a win or two does to lift the morale, and send a shaft of sunlit optimism through the murky gloom of a joyless season.

A win over Newport is always enjoyable, and to follow that with rare and remarkable victory at Pontypool Park within the week gives added pleasure to what are too often fruitless sojourns into the Gwent valleys.

It is purely coincidental that our guests today are also from the heartlands of Gwent. Ebbw Vale recently had their vision of a quick return to the top levels of welsh Rugby dashed by their near neighbours Cross Keys (they don't play their rugby on sentimental principles up there in the Gwent valleys – a local derby is a local derby, and the only consequence is immediate result, not the long term consequences).

Nevertheless, we find ourselves playing Ebbw Vale today because both sides are no longer distracted by their involvement in the Schweppes Cup. Which of course is much preferred by us, as an alternative to playing them in the Second Division next season.

Over the years we have established a strong relationship with Ebbw Vale, ever since we first started playing them shortly after World War II. The Ebbw Vale club emerged from the turmoil of the war with an exceptionally strong and talented team. Their jumbo sized pack containing names like Len Dimmock, Len Coldrick, Des Winters, Eric Finney, Ben Edwards, Francis Matthews is readily called to mind. Roy Hughes, the Tovey boys, Wilf Hunt, Dennis Evans were skilful and formidable backs that immediately spring to mind from a list too long to print, and too long to remember. These were days when the furnaces at Ebbw Vale burned bright, and their glow created a false sunrise onto the northern horizons of the Gwent valleys. They burn no more, and change is inevitable.

Somehow I feel that Ebbw Vale RFC would prefer to have the steelworks and the hard men that went with them to the environmentally sound and culturally superior, but invariably gentler and softer regime of the Garden Festival. I knew lots of prop

forwards who worked in the strip mills, I don't know any that planted daffodils.

In all this is the record of games played against Ebbw Vale:

P.67 W.39 L.23 D.5 For 1,094 Against 623

Ebbw Vale will be attempting to achieve their seventh win at Cardiff today. Included in the previous record were two Schweppes Cup matches, both played at Ebbw Vale which Cardiff won 29-10 and 22-9. Our captain today, Ian Watkins, is of course a former Ebbw Vale player and I am sure he will be preparing a warm reception for Ebbw Vale, both on and off the pitch.

CROESO GLYN EBWY.

D.J.H.

CARDIFF YOUTH

The whole of the club must congratulate our youth team on their victory in the Esso Cup against Maesteg. They have since followed that success by winning the East District Cup against Cardiff Harlequins at the Glamorgan Wanderers ground.

THE RAGS

The Rags are finishing off a more than satisfying season. They have scored 219 tries in their 40 games. Their record to date reads:

P.40 W.35 L.5 For 1,193 Against 441

THE UNDER 21's

The Under 21's, a team that contains masses of brilliant talent for the future, are the only unbeaten team in the club. By definition they also have a ground record, but on this occasion they also have a ground record because they have only played away. They beat Llanelli Under 21's at Stradey 20-18.

Their record to date:

P.1 W.1 L.0 D.0 For 20 Against 18

Under the guidance of Peter Manning they will be defending this record against Llanelli at Cardiff on the 6th May, kick off 7.15p.m. For the connoisseur with an eye to the future this is the team to watch.

SUPPORTERS CLUB

I am reminded to inform you that the Supporters Club A.G.M. will be held in the Athletic Club on 20th May.

THE LOTTERY

Sir Albert Francis wishes it to be known that the Lottery will take place on the 21st May. His star attraction is the new sensation from The Vale 'The Singing Farmer' from Llantwit Major. Not to be missed I am told.

D.J.H.



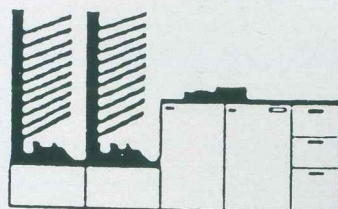
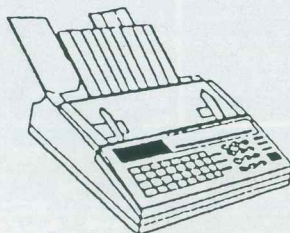
**Heineken refreshes the parts
other beers cannot reach.**

Konica

**PETER
LLEWELLYN
LTD.**

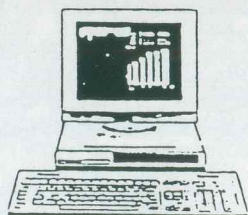
==== Distributors in Wales for ====

MONO & COLOUR PHOTOCOPIERS



FACSIMILE

BUSINESS SYSTEMS



Official Suppliers
to the
Welsh Rugby Union

Norbury Road
Fairwater
Cardiff
CF5 3AT

Tel: 0222 / 555344

Branches also at:- Swansea Milford Haven" Wrexham" Bangor" Aberystwyth"

WALES LARGEST VAUXHALL DEALER

*Ten Reasons why you should buy
your next new or used vehicle from us*

- 1 MONEY BACK GUARANTEES
- 2 ALWAYS A SUPERB CHOICE OF VEHICLES
NEW AND USED
- 3 EXCELLENT PART EXCHANGE
ALLOWANCES
- 4 PROFESSIONAL SALES STAFF
- 5 DEMONSTRATIONS AVAILABLE
- 6 EXCELLENT AFTER SALES SERVICE
- 7 IN-HOUSE FINANCE FACILITIES
- 8 PRE-DELIVERY SERVICE ON ALL VEHICLES
- 9 MOTABILITY SPECIALISTS NEW AND USED
- 10 PART OF EUROPE'S LARGEST
RETAIL GROUP

Lex Vauxhall



LEX
SERVICE

Tel No: 0222 387221

Open 7 Days a week until 8pm Weekdays

WE ARE PLEASED TO BE ASSOCIATED WITH CARDIFF ATHLETIC CLUB

Rugby Quiz – No. 19

With the season coming to a close, let's have a look at our club's current records.

1. Who is the season's highest scorer?
2. Who has scored most tries?
3. Who has played most first team games?
4. How many times have we failed to score in a game?
5. Who is the Rags top scorer?



NO QUESTION.

WALES' LEADING
ADVERTISING AGENCY

GSP

Golley Slater and Partners Limited

Call Andrew James, Client Services Director,
on Cardiff (0222) 388621

Advertising · Marketing · Public Relations
Golley Slater and Partners Limited, 9-11 The Hayes, Cardiff, CF1 1NU.
Telephone: (0222) 388621. Telex: 497629. Fax: (0222) 238729.

You take care of your money. What about your health?

Worried about long hospital waiting lists, differing levels of care, the availability of quality treatment? We have the solution. An impressive range of healthcare plans to suit your own special needs.

These plans are all designed to provide you with cover for top quality healthcare combined with speedy treatment.

And it's affordable! Our attractive premiums and no claims discounts will surprise you – **we've even added a 27.5% starter discount.**

Find out more today by returning the coupon to the address below or by calling us on 0222 395721.

Your own and your family's health is priceless. Don't take it for granted.



Lloyds Bank Health Care has been arranged by Lloyds Bank Insurance Services Limited. Registered Office: 7 Perry Mount Road, Haywards Heath, RH16 3YE. Registered in England No. 968406. These Health Care policies are underwritten by Ambassador Insurance Company Limited, a wholly owned subsidiary of Lloyds Abbey Life plc.



Return to: Lloyds Bank Plc. P.O. Box 81, 27 High Street, Cardiff CF1 1QZ.

I value my health. Please contact me with further details of your Health Care plans.

(Mr/Mrs/Miss/Ms) Surname

Initials

Address

Postcode

Evening/Daytime Telephone No.

Date of Birth



**Lloyds
Bank**

THE THOROUGHbred BANK.

A/4 June 1991

CARDIFF RUGBY SUPPORTERS CLUB

Coach Arrangements

		(FM)	SC/JNR	
JANUARY 11th	Neath	£3.00	£2.50	Leaving at 12.30 p.m.
FEBRUARY 15th	Newbridge	£3.00	£2.50	Leaving at 12.30 p.m.
MARCH 11th	Pontypridd	£3.00	£2.50	Leaving at 12.30 p.m.
APRIL 11th	Llanelli	£4.00	£3.50	Leaving at 12.00 noon
APRIL 25th	Pontypool	£3.00	£2.50	Leaving at 12.30 p.m.

PLEASE WATCH THE NOTICEBOARD FOR COACHES TO CUP MATCHES

Social Events

FRIDAY JAN 10th
FRIDAY FEB 14th
FRIDAY MARCH 13th
FRIDAY APRIL 24th

CONTACT COMMITTEE MEMBERS FOR TICKETS!

Nostalgia Night— *Music of the 60's*
Frank Hennessey in Concert
Horse Race Night for Youth Team
Our ANNUAL DINNER



Julian Hodge Bank

Deposit Accounts

*A civilised approach
to Banking*

Commercial Mortgages

Instalment Credit

Julian Hodge Bank Ltd,
10 Windsor Place, CARDIFF CF1 1YW
Telephone 0222-220800 Fax 0222-344061

KNOW THE LAWS

By J. E. MALCOLM THOMAS

RUGBY'S RULE CHANGES

On April 16th, the International Rugby Football Board, meeting in Wellington, New Zealand, announced **16 Law changes** and **4 Experimental variations** with the aim, hopefully, of creating a faster, more entertaining game. I will outline some of the changes in this programme against Ebbw Vale and the others in the programme for the last home League game of the season against Neath.

1. Scoring values change to make a **try worth five points**. Ebbw Vale will surely welcome this, for their game last Saturday against Llanharan ended in a 12 all draw, yet Ebbw Vale scored three tries to none. Penalties and drop goals still worth three points, but teams awarded a free kick may not score a dropped goal until after the ball next becomes dead.
2. **After a tackle** any other player (not involved in the tackle) **must** be on his feet when he plays the ball.
3. **In general play**, offside players may not advance towards a player waiting to play the ball **until** they have been put onside.
4. **At a quick throw** the ball may be thrown in from any point along the touch line **nearer** to the defending team's goal line, **provided** the player uses the same ball and retrieves it himself.
5. When a player receives the ball outside his 22 **and runs behind the 22** to kick for touch, he may **not** gain ground from the kick.
6. When a **penalty is kicked directly into touch** the **same team** will have the throw in.

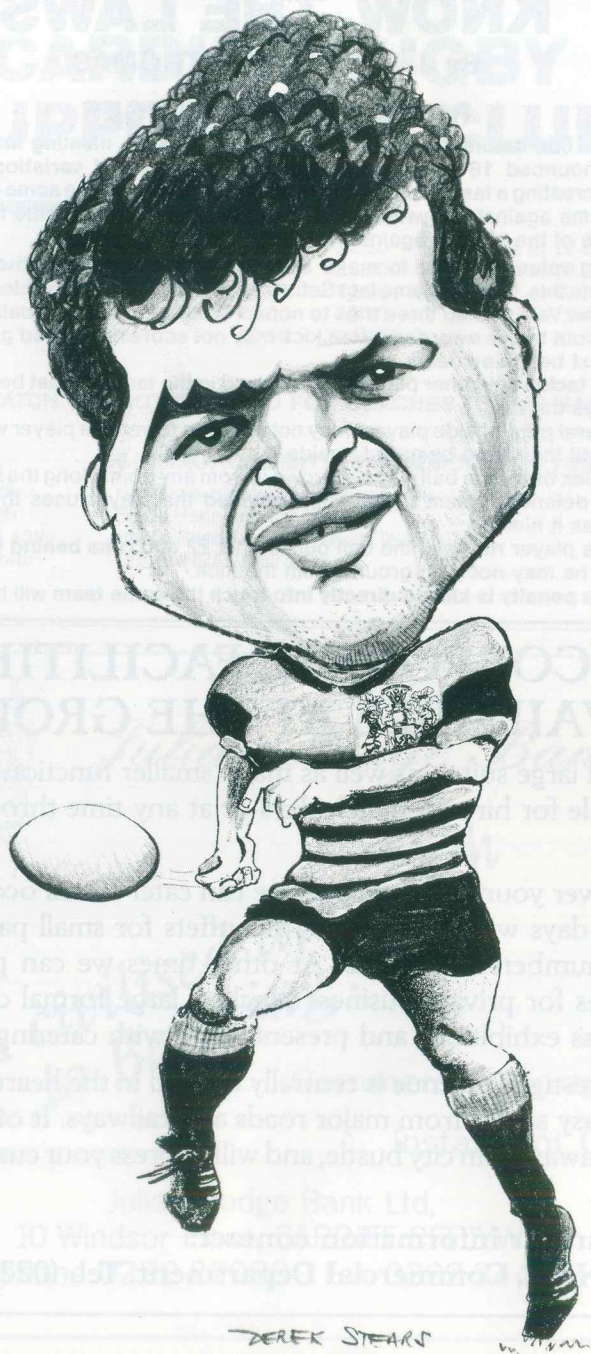
CORPORATE FACILITIES AVAILABLE AT THE GROUND

Several large suites, as well as many smaller function rooms, are available for hire on match days or at any time throughout the year.

Whatever your requirements, we can cater for all occasions. On match days we offer lunches or buffets for small parties or for large numbers of guests. At other times we can provide the facilities for private business lunches, large formal dinners and business exhibitions and presentations with catering facilities.

This prestigious venue is centrally located in the heart of the city with easy access from major roads and railways. It offers a quiet haven away from city bustle, and will impress your customers and clients.

For further information contact:
Tina Nash, Commercial Department. Tel. (0222) 382006.



QUIDNUNC'S COLUMN

TWO SWALLOWS don't make a summer, nor even a spring, but there's no doubt that two Heineken League victories have caused a bit of a buzz around the place — and not only among Cardiff players and supporters.

As he goes quietly about his business Quidnunc comes across rugby people outside the capital who believe that the men in blue and black are poised once more to make an impact.

Clearly, the arrival, albeit temporarily for the moment, of the new coaching supremo Alec Evans and the appointments of his impressive henchmen have also been major talking points as the old season fades.

One of the things that has struck me as I seek information for the Quidnunc column is the cheerful spirit of the majority of the players, confident and optimistic for the future and somewhat puzzled about the lack of success on the park.

"We're not all that far from being a decent side," is the often repeated theme. "One day we'll put it all together"

Because of this, I went in search of one of our senior men whose individualistic flair has given such frequent pleasure. It was only a couple of months ago that we read that Mark Ring was due to hang up his boots and retire yet again.

Those who know Ringo well are aware that some of his statements — particularly with regard to racehorses — should be taken with a substantial pinch of salt; he is not above a little leg-pulling.

So what, I thought, does the future hold for Mark? Six telephone calls and a desultory conversation with his answering machine failed to provide any answer.

With his new business in roofing — Mark took the Thatcher-style advice to go out on your own, or at least with the assistance of the redoubtable Martin Daly — he was clearly deeply committed.

So with the Derek Stears cartoon and the presses ready to roll I had to admit defeat over an interview.

Perhaps we will see Mark enthusiastically making the most of his comeback, while he continues also his successful relationship with St. Albans. Perhaps we will see him fitting comfortably into the Alec Evans-Terry Holmes scheme of things. Perhaps that flair which can so easily win a match, or which can upset certain opposition with the impishness which makes him attempt to backheel a conversion, will be even more free-ranging.

Who knows? What is clear is that he was delighted to have been a part of that win against his old club at Pontypool Park last weekend.

Let's hope that Ringo can remain injury-free and that business, both on the roof and on the pitch, will be very much as usual next season.

Today's visitors, Ebbw Vale, are still usefully placed to win promotion to join us next year in the First Division. What with garden festivals and all, these are interesting times also at Ebbw Vale, a club which is one of the answers to a rugby question which came my way recently and which you can contemplate as you wait for the start today. How many WRU-affiliated clubs can you think of which start and end with the same letter? There are several — if you think hard enough.



We're on the Ball...

...for Kango Hammers ● Hitachi Power Tools ● Partner Saws ● Kawasaki Generators ● Belle Mixers ● Robin Engines ● K'Archer Pressure Washers ● Compair Compressors ● **Sales, Service, Parts & Repairs for the Hire Trade, Construction, Industry & Domestic User. Ring 0222 707341.**



PENARTH ROAD, CARDIFF



PEACOCKS

YOU'LL LOVE THE CHOICE FOR YOU & YOUR FAMILY

PEACOCKS

YOU'LL LOVE THE PRICES TOO!

BRANCHES THROUGHOUT WALES & STORES NATIONWIDE

Cardiff

15. Mike RAYER
14. Steve FORD
13. Mike HALL
12. Mark RING
11. Ian JEFFREYS
10. Craig MILLER
9. Andy BOOTH
1. Mike GRIFFITHS
2. Ian GREENSLADE
3. Phil SEDGEMORE
4. Paul KAWULOK
5. Mark EDWARDS
6. Phil THOMAS
8. Howard STONE
7. Matthew LLOYD
16. Huw HARRIES
17. Jonathan HUMPHREYS
18. Paul EDWARDS

Full Back
Right Wing
Right Centre
Left Centre
Left Wing
Outside Half
Inside Half
Forwards



Replacements

Today's Referee:
Mr. D. L. HOWELLS

Touch Judge:
DEREK WOOLS

Today's Ball Sponsor:
Standard Life Assurance

Ebbw Vale

- Darrel MEREDITH 15.
- Gavin THOMAS 14.
- Cain PRICE 13.
- Andrew JEWITT 12.
- Geraint BOWDEN 11.
- Stewart McKIE 10.
- John HODGES 9.
- Alan PHILLIPS 1.
- Keirion GREGORY 2.
- Neil HITCHMAN 3.
- Mike BOYCOTT 4.
- Mike VOYLE 5.
- Julian BIRT 6.
- Phil BOOTH (Captain) 8.
- Robert STEPHENS 7.

- 16.
- 17.
- 18.

DIAGNOSTIC TREATMENT REHABILITATION CLINIC

*"A Unique facility...
striving for excellence"*

A superb modern facility with the latest equipment for diagnosing and treating **Back Pain, Arthritis, Muscular Problems, Sports Injuries** and many other conditions.

Please contact:
STEVE CANNON,
220 CATHAYS TERRACE,
CARDIFF CF1 4JA.
Tel: (0222) 382811

Baytrack Ltd.

1 Eastbay Close, Tyndall Street,
Cardiff CF2 1BG
Telephone: 0222 462777 Fax: 0222 493377
for **VOLVO**

OUR NEXT HOME GAME...

v. NEATH

HEINEKEN LEAGUE FIRST DIVISION

Saturday, 9th May 1992

Kick-Off 2.30 p.m.

Baytrack Ltd.

1 Eastbay Close, Tyndall Street,
Cardiff CF2 1BG
Telephone: 0222 462777 Fax: 0222 493377
SUBARU ISUZU HYUNDAI



FW Morgan Ltd

*Timber and Builders Merchants
Est. in Cardiff since 1899*



Member of The
Timber Trade
Federation

- *Sawn and Planed Timbers*
- *Hardwoods*
- *Plywood and Blockboard*
- *Hardboard and Chipboard*
- *Doors and Windows*
- *Stairs and Roof Trusses*
- *Kitchens and Bathrooms*
- *Tool and Plant Hire*
- *Blocks and Bricks*
- *Sand and Cement*
- *Patio Paving and Walling*
- *Ironmongery and Tools*
- *Heating and Plumbing*
- *Wallboards and Cladding*
- *Gutters and Downpipes*
- *Fireplaces*



DAILY DELIVERIES TO ALL AREAS

Allensbank Road, Cardiff
129 Cowbridge Road East, Cardiff
No.1 Yard Roath Dock, Cardiff
Morel Street, Barry, South Glam.

CARDIFF (0222) 621767
CARDIFF (0222) 378056
CARDIFF (0222) 491100
BARRY (0446) 748986

THE BUTE ROOM SCHEME

May we remind you of the Club's Hospitality Scheme which is held in the Club's Bute Room, located under the South Stand.

A full day's entertainment at a first class Heineken National league match.

Your day will begin with a Champagne Reception followed by an excellent lunch with wine. Take your seat in the South Stand and soak up the atmosphere of the ensuing game. (Programmes will be provided). After the match return to the relaxed and informal setting of the Bute Room where Tea, Coffee and a light buffet will be served. A complimentary bar will be available until 6.00 p.m.

An ideal opportunity to entertain you friends and clients.

For more information contact:

Tina Nash, Commercial Department (0222) 382006.

ADSPORT...

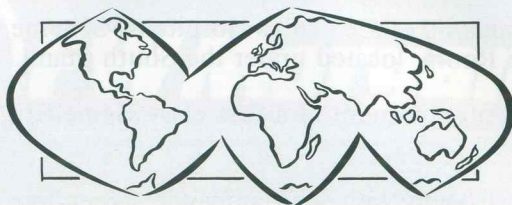
**FOR YOUR PERIMETER ADVERTISING,
SPONSORSHIP AND
MATCH PROGRAMME
ADVERTISING**

P.O. Box 101, Cardiff CF4 3XH.

Tel: (0222) 487870

Fax: (0222) 578298

CARDIFF



WORLD TRADE CENTRE COMPLEX

ON ONE INTEGRATED SITE:

THE CARDIFF WORLD TRADE CENTRE

5000 Seats · 5000 SQ Metres Exhibition Area

Opens June 1992

Telephone (0222) 464141

THE CARDIFF INTERNATIONAL HOTEL

143 Ensuite Bedrooms

Cardiff's Newest Hotel

Telephone (0222) 341441

THE WALES NATIONAL ICE RINK

Telephone (0222) 383451

HOME OF

THE CARDIFF DEVILS

1990 British Ice Hockey Champions

Prestige OFFICE DEVELOPMENTS

Harlech Court · World Trade Tower

THE BRENT WALKER GROUP PLC

Cardiff Division, Harlech Court,

Bute Terrace, Cardiff CF1 2FE

SPONSORS OF CARDIFF

RUGBY FOOTBALL CLUB



THE BRENT WALKER GROUP PLC

CARDIFF



INTERNATIONAL
HOTEL

NOW THERE'S AN INTERNATIONAL 365 DAYS A YEAR!

We're very much aware that the word 'international'
carries certain high expectations.

THE CARDIFF INTERNATIONAL HOTEL

offers outstanding levels of service and comfort for
business travellers, tourists and family breaks.

The Cardiff International enjoys a central position and
offers 143 fully serviced modern bedrooms, executive
meeting rooms, a superb restaurant with bar, lounge
and shop, plus its own underground car park.

Come along and meet the team!

To receive a brochure contact:

Cardiff International Hotel, Mary Ann Street,

Cardiff, South Glamorgan CF1 2EQ

Tel: 0222 341441 Fax: 0222 223472

CARDIFF INTERNATIONAL HOTEL

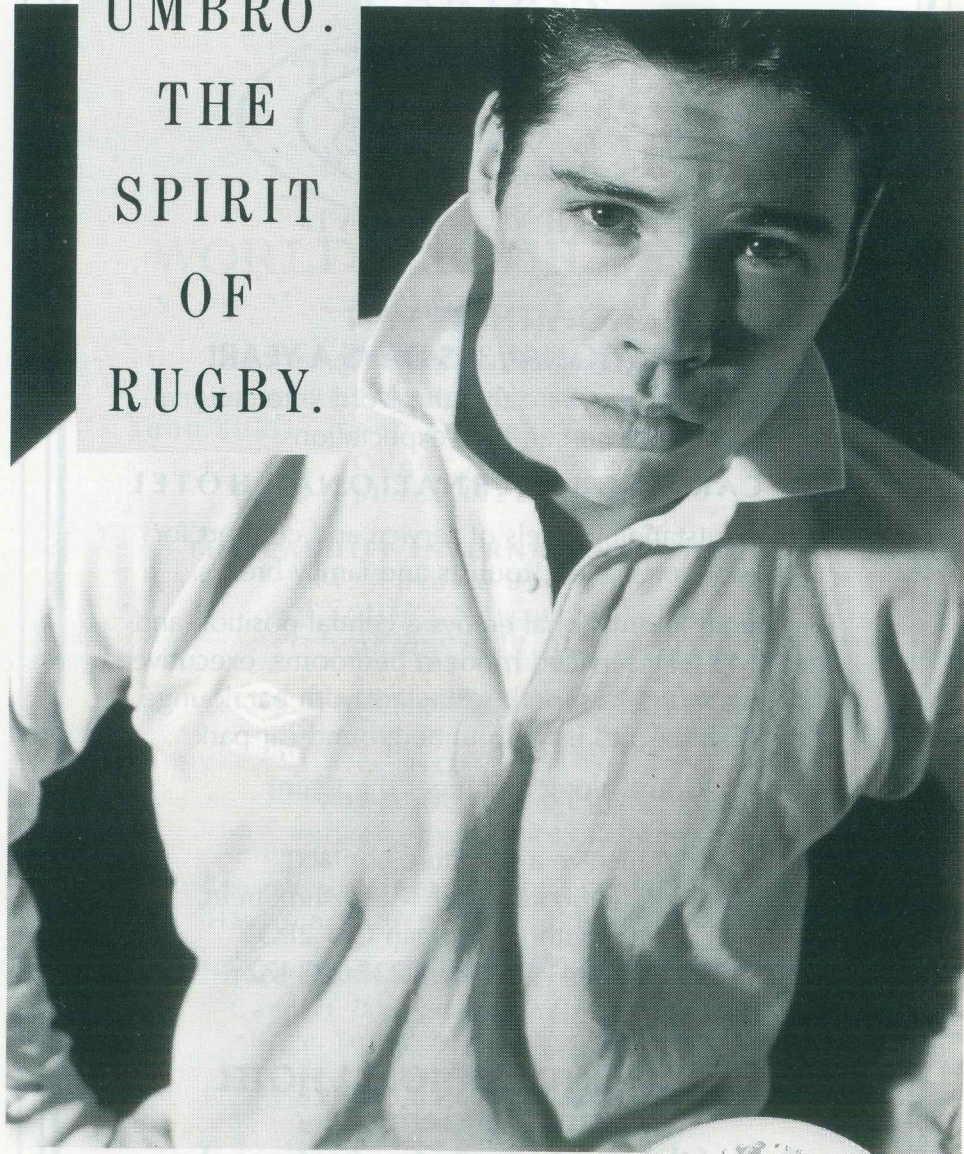
A capital experience

Part of the World Trade Centre Complex



BRENT WALKER
HOTELS

UMBRO. THE SPIRIT OF RUGBY.



Strong. Competitive. Durable.
Traditional. Supporting. They're
all words that embody the spirit
of rugby.

captured by Umbro in its latest
range of rugby teamwear and
authentic replicas.

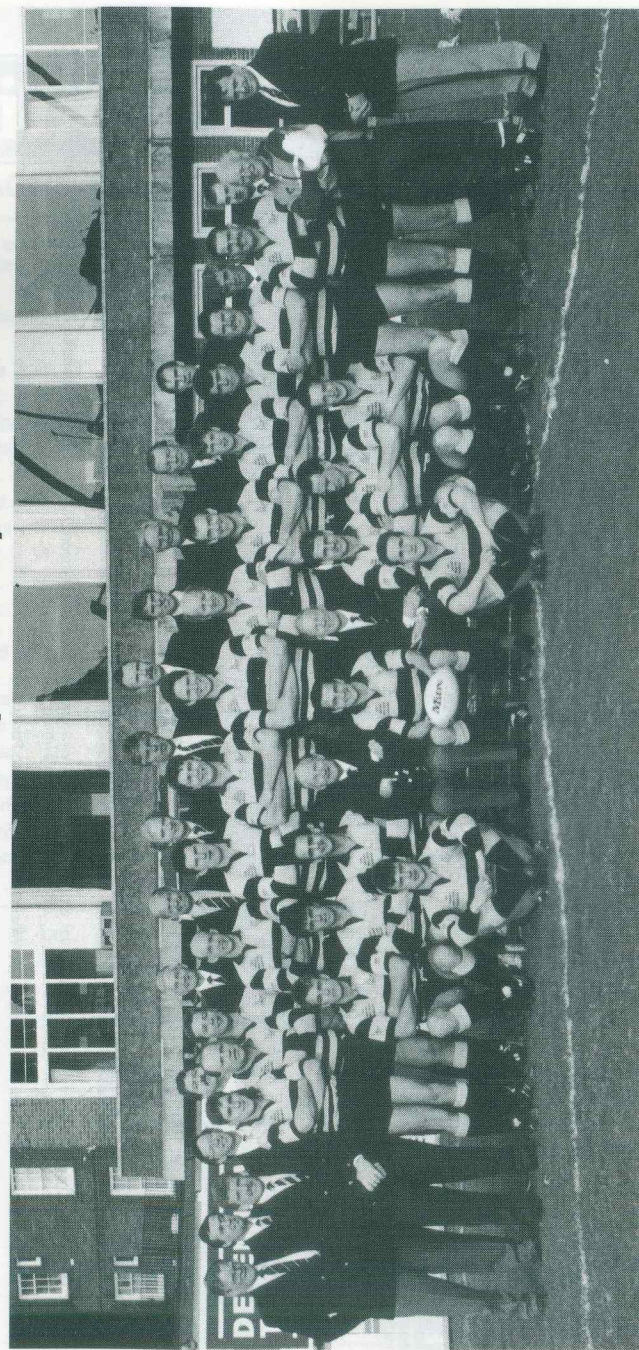
Now that spirit is available

They also epitomise the spirit
to you. Choose Umbro.



Official suppliers to British Lions, Scottish and Welsh Rugby Unions, and Great Britain Rugby League.

CARDIFF RUGBY CLUB (FIRST XV) SEASON 1990-91



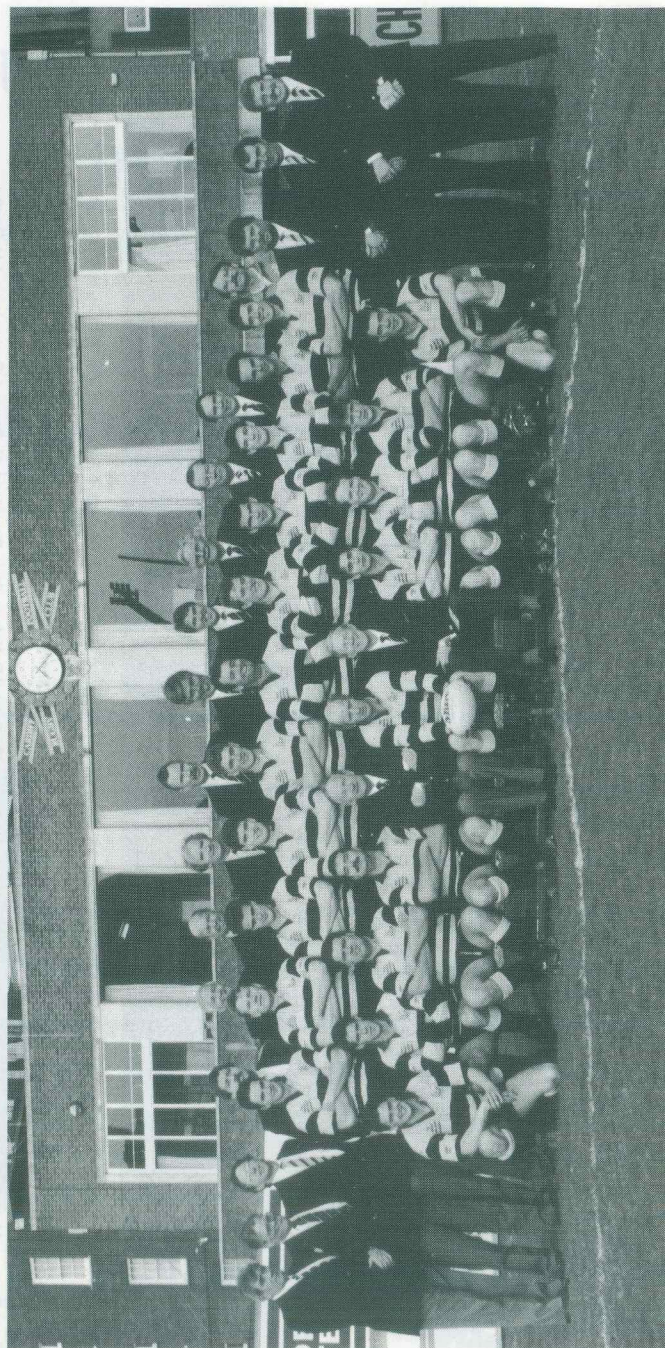
Back Row: P. Nyhan, P. Manning (Coach), G. Griffiths, J.P. Scott, B. Mark, A.D. Williams, M. John, T.J. Charles, I. Robinson, C.J. Webber, P.T. Goodfellow, C.T. Howe, J. Evans, J.D. O'Donnell, I. Watkins, A.J. Phillips (Coach)

Middle Row: R.J. Newman, C. Thomas, S. Blackmore, A.M. Bennett, R. Collins, S. Crothers, M. Edwards, S. Roy, R. Lakin, H. Stone, A. Donovan, M. Ring, M. Griffiths, P. Edwards, R. Ayres (Trainer)

Front Row: M. Hall, G.W. John, S. Ford, A.J. Priday (Chairman), J.D. Evans (Captain), J.D. Nelson (Hon. Secretary), M. Rayer, I. Greenslade, A.H. Booth

Seated in Front: S. Hill, P. John

CARDIFF RUGBY CLUB (ATHLETIC XV) SEASON 1990-91



Back Row:

J.D. O'Donnell, P. Nyhan, G. Griffiths, J.P. Scott, B. Mark, A.D. Williams, M. John, I. Robinson, T.J. Charles, C.J. Webber, P.T. Goodfellow, C.T. Howe, J. Evans, K. Davies (Trainer), M. Childs (Coach), D. John (Coach), R.J. Newman.

Middle Row:

D. Hurford, R. Knill, M. Liddiatt, R.O. Williams, C. Langley, Mike Parry, I. McKim, T. Crothers, I. ap Dafydd, P. Coletto, M. Thomas

Front Row:

C. Miller, K. Morgan, G. Swaine, J. Souto, A.J. Priday (Chairman), R. Lakin (Secretary), J. D. Nelson (Hon. Secretary), M. de Maid, O. Golding, J. Humphreys, N. Baxter.

Heineken® LEAGUE TABLES

(up to and including
Saturday, April 25, 1992)

First Division

	P	W	D	L	T	Pt
Swansea ..	17	13	0	4	56	26
Llanelli	17	11	1	5	55	23
Newbridge ..	18	10	0	8	36	20
Pontypridd ..	17	10	0	7	31	20
Neath	17	8	2	7	41	18
Bridgend ..	17	9	0	8	30	18
Pontypool ..	17	7	3	7	35	17
Newport ...	18	7	2	9	36	16
Cardiff	17	5	1	11	26	11
Maesteg ...	17	1	1	15	16	3

Second Division

	P	W	D	L	T	Pt
SW Police	17	11	2	4	42	24
Aberavon	17	10	3	4	49	23
Ebbw Vale	16	10	1	5	35	21
Cross Keys ...	16	8	3	5	35	19
Llanharan	16	9	1	6	26	19
Abertillery	17	8	1	8	34	17
Glam Wands. .	17	8	1	8	27	17
Dunvant	16	8	0	8	31	16
Tredegarr*	17	4	0	13	28	6
Penarth	17	1	0	16	17	2

(*Deducted two points)

STATISTICS FROM Baytrack for VOLVO

FIRST DIVISION RESULTS

	BRIDGEND	CARDIFF	LLANELLI	MAESTEG	NEATH	NEWBRIDGE	NEWPORT	PONTYPOOL	PONTYPRIDD	SWANSEA
BRIDGEND	H 28-9 A 18-14		17-12	24-7	8-0	0-25	12-7	22-15	10-14	22-15
CARDIFF	H 14-18 A 9-28		22-28	15-18	6-34	16-22	7-14	9-16	11-4	6-38
LLANELLI	H 12-17 A 28-22			34-15	31-10	47-3	16-12	21-21	11-18	11-6
MAESTEG	H 18-15 A 7-24		6-32	3-32	10-31	9-50	6-21	18-27	12-42	4-23
NEATH	H 34-6 A 0-8		3-3	13-23	20-20	17-22	6-48	0-28		6-47
NEWBRIDGE	H 22-16 A 25-0		16-6	13-9	22-17	9-3		21-3	9-21	6-24
NEWPORT	H 14-7 A 7-12		12-6	19-9	48-6	16-34	20-4		10-10	13-6
PONTYPOOL	H 16-9 A 15-22		10-23	15-36	28-0	13-26	6-25	7-7		3-6
PONTYPRIDD	H 4-11 A 14-10		17-12	16-22	18-6	25-6	25-12	16-3		9-27
SWANSEA	H 38-6 A 15-22		23-9	9-3	47-6	24-13	20-9	14-0	46-12	

Third Division

	P	W	D	L	T	Pt
Tenby Utd. ..	18	15	0	3	49	30
Llandovery ..	18	13	0	5	30	26
Blaina	18	12	0	6	43	24
Narberth ..	18	12	0	6	30	24
Treorchy ...	18	9	3	6	27	21
Mt. Ash	18	7	0	11	25	14
Rumney ...	18	6	2	10	22	14
Wrexham ...	18	4	2	12	23	10
Bonymaen ..	18	4	1	13	31	9
A'vonn Qns ..	18	4	0	14	22	8

Fourth Division

	P	W	D	L	T	Pt
Tumble	17	14	0	3	54	28
Kenfig Hill ..	18	11	1	6	38	23
Abercynon ..	18	10	2	6	39	22
St. Peter's ..	18	10	2	6	36	22
Blackwood ...	18	9	1	8	36	19
P'pool Utd ..	18	8	1	9	38	17
Y'gynlais ...	18	8	1	9	25	17
Kidwelly ...	18	7	0	11	27	14
Cilfynydd ..	17	5	2	10	34	12
Ruthin	18	2	0	16	24	4

Statistics from

Baytrack Ltd.

1 EASTBAY CLOSE, TYNDALL STREET,
CARDIFF CF2 1BG

for VOLVO

Telephone: (0222) 462777

Fax: (0222) 493377

*Thinking of a New
Central Heating System or maybe a
New Bathroom Suite
then Phone Tim Crothers on
0222 551169
for a Free Quote*



***NO JOB TOO SMALL
NO ORDER TOO TALL***



- Corgi Registered
- Individually Designed Systems
- British Gas Board Trained
- Free Quotes
- Two-Year Guarantee

Tim Crothers & Son
Heating and Plumbing Engineers

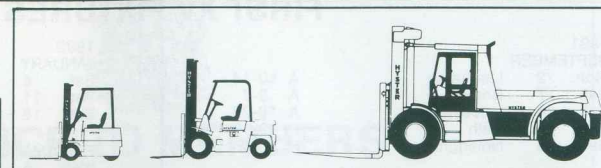
56 Mayfield Avenue, Victoria Park, Cardiff CF5 1AN
Tel: (0222) 551169

Capital Equipment from the Welsh Capital!

A Truck for every size of load –
An Answer for every handling
problem



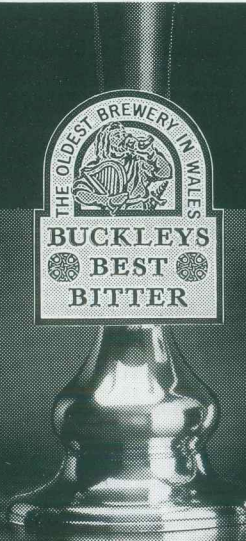
**BARLOW
handling**



CONTACT COLIN HOWE ON CARDIFF 387757 To learn about the finest and widest range of lift trucks and service facilities available in South Wales.


Rugby Quiz No. 19 – Answers

1. Mike Rayer, 113 points from 3 tries, 19 conversions and 21 penalties.
2. Steve Ford, 14.
3. Paul Kawulok, 33 (including all 17 league games).
4. None, we have managed some score in all 37 games played.
5. Craig Miller with 150 points from 4 tries, 40 conversions, 17 penalties and 1 drop goal.



THE OLDEST BREWERY IN WALES
**BUCKLEYS
BEST
BITTER**

**LOOKING
FORWARD
TO THE
SECOND HALF**



THE OLDEST BREWERY IN WALES
**BUCKLEYS
BEST
BITTER**

BUCKLEYS BEST BITTER. THE GOLDEN OLDIE.

Cardiff Rugby Club 1991-92

FIRST XV FIXTURES

1991			1992		
SEPTEMBER			JANUARY		
Mon. 2	Llanharan	A 10-14	Sat. 4	Pontypool (L)	H 10-24
Sat. 7	Bristol	A 9-7	Sat. 11	Neath (L)	A 3-3
Sat. 14	Leicester	A 18-23	Sat. 18	Pencoed (Cup)	A 58-10
Sat. 21	Bath	H 9-10			
Sat. 28	Nottingham	H 28-4			
OCTOBER			FEBRUARY		
Sat. 5	Aberavon	A 13-13	Wed. 5	Swansea (L)	H 14-36
Tue. 8	Penarth	A 19-4	Sat. 8	Saracens	H 22-12
Fri. 11	Glamorgan Wanderers	H 6-16	Sat. 15	Newbridge (L)	A 6-16
Sat. 19	Cambridge University	A 19-26	Sat. 22	Newport (W.R.U. Cup 6th)	H 4-12
Fri. 25	Wasps	H 38-8	Sat. 29	Bridgend (L)	H 14-18
NOVEMBER			MARCH		
Fri. 1	Gloucester	H 6-11	Sat. 7	London Welsh	A 29-25
Sat. 9	Swansea (L)	A 9-23	Sat. 14	Pontypridd (L)	A 12-17
Sat. 16	Newbridge (L)	H 3-6	Fri. 20	Ayr	H 27-12
Sat. 23	Bridgend (L)	A 9-28	Sat. 28	Maesteg (L)	H 22-9
Sat. 30	Pontypridd (L)	H 19-12			
DECEMBER			APRIL		
Sat. 7	Maesteg (L)	A 32-6	Sat. 4	Wasps	A 14-12
Sat. 14	Llanelli (L)	H 22-28	Sat. 11	Llanelli (L)	A 6-22
Sat. 21	Newport (L)	A 6-12	Sat. 18	Barbarians	H 25-26
Thurs. 26	Pontypridd	H 10-27	Tues. 21	Newport (L)	H 18-13
Sat. 28	Welsh Academicals	H 55-14	Sat. 25	Pontypool (L)	A 23-10

(L) denotes League game

ATHLETIC XV FIXTURES

1991			1992		
SEPTEMBER			JANUARY		
Thurs. 5	Pencoed	H 35-14	Sat. 4	Pontypool Athletic	A 54-17
Sat. 7	Bristol United	H 23-12	Sat. 11	Ebbw Vale Athletic	H 48-12
Tue. 10	Llandaff	H Canc.	Tues. 14	Caldicot	A 34-0
Sat. 14	Leicester Extras	H 26-15	Fri. 17	Garndiffaith	H 54-6
Tue. 17	Bedwas	A 22-16	Sat. 25	Old Iltydians	A 23-0
Sat. 21	Bath United	A 24-27	Thurs. 30	St. Peter's	H 22-13
Sat. 28	Llanhilleth	A 22-0			
OCTOBER			FEBRUARY		
Wed. 2	Glynneath	A 19-10	Sat. 8	Glamorgan Wanderers II	A 19-8
Sat. 5	Hirwaun	H 36-3	Sat. 15	Abercarn	H 14-15
Fri. 11	Mountain Ash	A Canc.	Sat. 22	Bedwas	H 26-11
Wed. 16	Senghenydd	A Canc.	Sat. 29	Bridgend Ravens	A 16-17
Sat. 19	Blackwood	H 24-9			
Fri. 25	Pontypool United	A 15-7	MARCH		
Tue. 29	Rumney	H 7-3	Sat. 7	London Scottish	A 45-15
NOVEMBER			Sun. 8	Maidenhead	A 47-13
Fri. 1	Gloucester United	A 3-39	Wed. 11	Llanelli U21's	20-18
Sat. 9	Rosslyn Park II	H 16-10	Sat. 14	Pontypridd Ath.	H 31-12
Sat. 16	Cardiff Inst.H.E.	A 21-14	Wed. 18	Pontypool United	H 13-8
Wed. 20	Cardiff Medicals	H 66-0		Osaka University U21's	26-6
Sat. 23	Bridgend Ravens	H 48-12	Sat. 28	Cwmcam	A 13-17
Sat. 30	Pontypridd Athletic	A 38-13			
DECEMBER			APRIL		
Sat. 7	Glamorgan Wanderers II	H 38-4	Sat. 4	Croesyceiliog	A 61-9
Sat. 14	Builth Wells	A Canc.	Wed. 8	Cardiff H.S.O.B.	H Canc.
Sat. 14	Senghenydd	A 41-6	Sat. 11	Neath Athletic	H 34-18
Sat. 21	Newport United	H 23-0	Wed. 15	Newport United	A 20-14
Sat. 28	Caerphilly	A Canc.	Wed. 22	Bridgend Sports	H 42-17
			Sat. 25	Pontypool Athletic	H 28-4
			MAY		
			Sat. 2	Ebbw Vale Athletic	A
			Sat. 9	Rumney	A

Saturday Kick Off - 2.30 p.m.

Mid Week Kick Off - 7.15 p.m.

Programme Co-ordinators: ADsport (0222) 487870
Provincial Printing and Publishing Co. Ltd., Cardiff



NOTICE TO MEMBERS

The Committee of Cardiff Athletic Club wish to bring to the attention of all members that the bar is now open from **12 noon - 11 p.m.** every day with the exception of Sundays, when normal hours prevail.

Your new Steward, Jeff Ellerman, and his wife Betty, are serving lunches from their new menu between **12 - 2 p.m.**

We would also like to point out that the Skittle Alley Bar is open to members and visitors from 11 a.m. - 2 p.m. and from 4 p.m. - 7 p.m.

Tel. Cardiff 220082.

FINDSWIFT LIMITED

GLASS & MIRROR SUPPLIES

GLAZING CONTRACTORS

PICTURE FRAMING

FRAMED MIRRORS

Senlan House, West Canal Wharf, Cardiff CF1 5DB Telephone: 387336

Ring NEVILLE BIBBY

IT'S PASSED EVERY OTHER TEST. WILL IT PASS YOURS?



The American Federal Register defines the toughest rules on car safety in the world. BMW consider them far too soft.

As a result, the new BMW 3 Series exceeds their standard in a head-on collision by 36%.

Rather than develop the chassis and suspension on an ordinary road, we went to the Nurburgring – a race track considered too demanding for Formula One – and used that.

The next test was Britain's motoring press.

"A tough act to follow" was Fast Lane's verdict. A nice summation of the lavish praise all round. But none of this matters until you test the new BMW 3 Series yourself. Judging on past performance, it will surpass your expectations.



THE NEW BMW 3 SERIES.

CULVERHOUSE CROSS
CARDIFF. TEL: 0222 597070
TO ARRANGE A TEST DRIVE

WYNDHAM

DISCOVER THE EDGE

A MEMBER OF CULVER HOLDINGS PLC

Nº 0531

2nd MAY 1992