

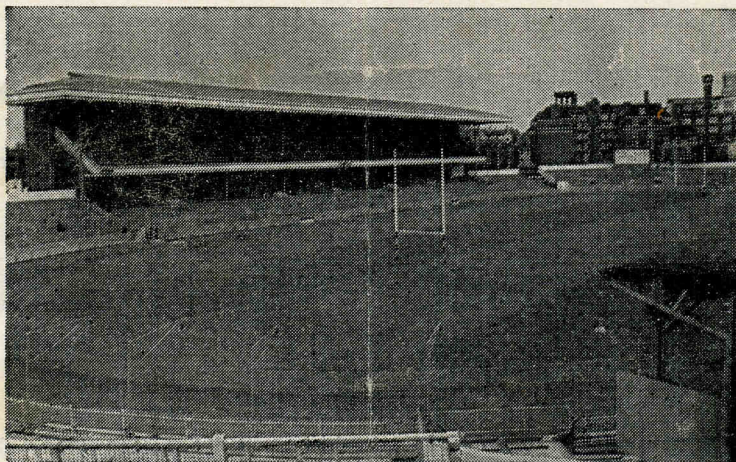
CARDIFF RUGBY CLUB

SEASON 1968 - 1969



CARDIFF
ARMS PARK

CARDIFF v. WELSH ACADEMICALS



SATURDAY, 7th SEPTEMBER, 1968

KICK OFF 3.00 P.M.

OFFICIAL PROGRAMME

PRICE SIXPENCE

PROVINCIAL PRINTING AND PUBLISHING CO., LTD., FERRY ROAD, CARDIFF

Cardiff v. Welsh Academicals

We welcome our guests today knowing that they should be able to draw upon a wide range of talent from the ever growing number of students who are on vacation at this time of the year. The Cardiff team today is certainly a strange one, and the Selectors have already had many difficulties in team selection. Added to the fact that all those British Lions who toured South Africa are either resting or are injured there is also the invitation today to play in the Harlequins Sevens Competition in London. Nine players will make up the party which will consist of:

J. Hickey	M. Davies	E. Williams
W. Hulin	J. H. Williams	A. D. Williams (Capt)
N. Williams		
<i>Reserves</i> — G. Wallace	A. Canham	

As John Uzzell injured his collar bone on Wednesday against Glamorgan Wanderers and will probably be out of action for at least a month there is thus ample opportunity for the selectors to experiment as they wish.

One of the notable absentees who is not available is Lynn Baxter, whom we congratulate on his selection for the Welsh Team to go to the Argentine, and we are quite sure that he will prove a worthy representative of the Club on this tour.

The Chairman for the coming season is Mr. Peter Goodfellow who will have a busy year in front of him, particularly as he is also Fixture Secretary. We wish him a successful year of office. The selectors for this year are Messrs. G. Porter, L. Williams, C. Howe and P. Nyhan and already their task is made particularly difficult. They will require the wisdom of a Solomon in their team selections for the coming weeks and to them also we wish a successful season.

B.M.

Variations In Laws 27(c) and 11(2).

The following variations in Laws 11(2) and 27(c) relating to kicking into touch will apply for the season 1968/69.

Law 11(2) — Alter to read

“(2) He must hold up his flag when the ball has gone into touch and stand with flag raised at the place where in accordance with Law 27 the ball is to be thrown in. He must indicate which team is entitled to throw in the ball.”

Law 27(c) — Delete first sentence and substitute

“(c) When the ball is in touch the place at which it must be thrown in is as follows :

- (i) when the ball goes into touch from a penalty kick, or from a kick within twenty-five yards of the kicker's goal line, at the place where the ball went into touch, or
- (ii) when the ball pitches directly into touch after having been kicked otherwise than as stated in (i), opposite the place from which the ball was kicked or at the place where it pitches into touch if that place be nearer to the kicker's goal line, or
- (iii) on all other occasions when the ball is in touch, at the place where the ball went into touch.

The ball must be thrown into the field of play so as to touch a player or the ground at least five yards from and at right angles to the touch-line.”

CARDIFF RUGBY FOOTBALL CLUB

SEASON 1968/69

Season Tickets are now available, and may be obtained from the Club Offices at the following prices:

SOUTH LOWER/UPPER GRAND STAND	£3 10 0
JUNIOR STAND SEASON TICKET (Under 15)	£1 15 0
FIELD/ENCLOSURE (Combined)	£2 0 0
Old Age Pensioner's FIELD TICKET	10 6
(BOOKS MUST BE SHOWN)	

Application must be accompanied by postal order or cheque made payable to the **CARDIFF ATHLETIC CLUB** and stamped addressed envelope.

SUNDAY EXPRESS

THE BEST FOR CARDIFF RUGBY REPORTS

—WITH A BIG MATCH SPECIAL

EACH WEEK BY

KEN JONES

WELSH HOSPITALS & HEALTH SERVICES ASSOCIATION

OVER FIFTY YEARS OF SERVICE

Founded 1912



Benefits all additional and supplementary to the National Health Service

CASH GRANTS TO HOSPITAL IN-PATIENTS

£3/10/0 or £7/0/0 per week

Dependent on Marital Status and Rate of Contribution

PLUS:—An Extra Week's Benefit for Convalescence.

Also valuable and generous benefits for:—

Hospital Out-Patients : Maternity : Convalescent Homes

Optical Appliances : Dentures : Local Authority Home Help

Physiotherapy : Private Specialist Consultation : etc.

SUBSCRIPTION RATES

1/- or 2/- per week

13/- or 26/- per quarter

£2/12/0 or £5/4/0 per Annum

Send for details today from B. Glanville Davies, General Secretary,
Welsh Hospital and Health Services Association, 60 Newport Road,
Cardiff.



Lewis Darbey & Co.

TOBACCONISTS — HAIRDRESSERS
and CONFECTIONERS

BRANCHES IN CARDIFF

84 ST. MARY STREET 100 QUEEN STREET

3 ROYAL BUILDINGS, PARK PLACE

OXFORD HOUSE, THE HAYES

7 MOUNT STUART SQUARE

QUEEN STREET ARCADE

53 WELLFIELD ROAD

Telephone Cardiff 33443

CARDIFF ATHLETIC CLUB

DEVELOPMENT FUND

CARDIFF ARMS PARK

CARDIFF

(Registered under the Betting, Gaming and Lotteries Act, 1963)

Promoters: R. F. TROTT and D. G. GRANT

DAILY PRIZES OF £20 £10 & 2 at £5

£240 PER WEEK

Agents and members are still required for the Daily Prize Draw run in conjunction with the Development Fund. The subscription is One Shilling per week only for 24 chances.

Please complete and return this form.

* I wish to become an Agent and shall be obliged if the Organiser can call to see me.

* I wish to become a Member of the draw and shall be obliged if you will advise me of the name and address of your nearest agent.

* I wish to become a Member of the draw for the next fifty-two weeks and enclose my cheque for £2 12s. 0d.

NAME

ADDRESS

*Please delete where necessary

GLAMTAX (CARDIFF) LTD.

ADJOINING THE CARDIFF ARMS PARK

FULL 24 HOUR TAXI SERVICE

Telephone Cardiff 26363

Agents for:
GODFREY DAVIS CAR and VAN RENTAL

Ironmongery & Building Materials
 Bathroom Suites
 Central Heating Systems · Fireplaces
 Kitchen Furniture

They're All At



BARRY BRIDGEND CARDIFF NEWPORT SWANSEA

We may not be able to interpret new rules — but we can interpret your Central Heating requirements. Give us a try . . . you will find that we are on the ball

D. MORGAN EDWARDS LTD.

Telephone CARDIFF 37338-9

THE HOUSE WARMING CENTRE
 17-21 CASTLE ST., CARDIFF

CENTRAL HEATING, KITCHEN and BATHROOM EQUIPMENT — MERCHANTS to HEATING and ALLIED TRADES



Read J.B.G. on
RUGBY
 in the



WESTERN MAIL

**OVER THE
 BAR**



**Take
 Courage**

Cardiff

15. D. GETHIN
14. P. L. JONES
13. B. WINTER
12. R. DUGGAN
11. A. FINLAYSON
10. I. LEWIS
9. G. SAMUEL
1. C. H. NORRIS (Capt.)
2. G. DAVIES
3. M. KNILL
4. I. ROBINSON
5. R. BEARD
6. C. EVANS
8. M. GAY
7. J. HARDING

Referee: I. J. MORGAN (Penlan, Swansea)

- Full Back
- Right Wing
- Right Centre
- Left Centre
- Left Wing
- Outside Half
- Inside Half



Welsh Academicals

15. G. PRICE (Neath)
14. H. SHEARN (Abertillery)
13. D. MORGAN (Univ. of Wales Cdff)
12. M. ROBINS (Rhymney)
11. L. JONES (Welsh C.A.T.)
10. L. HARDING (Gowerton)
9. N. MORGAN (Oxford Univ.)
- G. PRESCOTT (Cambridge Univ.)
- B. THOMAS (Birmingham)
- G. REES (St. Lukes T.C.)
- M. TRURAN (Glam. Wanderers)
- A. MARTIN (Cardiff T.C.)
- G. LOCK (Cambridge Univ.)
- M. SWAIN (St. Lukes T.C.)
- B. LLEWELLYN (Leicester)
- L. DAVIES (Bridgend)
- A. LLOYD EDWARDS (Royal Navy)

**SPACE
 TO
 LET**



*Dry Cleaning
 Service*

FOR YOUR DRY-CLEANING AND LAUNDRY
 'GET IN TOUCH WITH'
Gwyn Nicholls & Winfield
 LIMITED
 LLANDAFF NORTH
 Telephone CARDIFF 72231/2

**PROVINCIAL PRINTING
 AND PUBLISHING CO. LTD**

FERRY ROAD, CARDIFF
 Telephone CARDIFF 28729

WEDDING STATIONERY SUPPLIED

WHOLESALE GLASS MERCHANTS
 AND GLAZING CONTRACTORS

WELSH GLASS WORKS LTD.

CARDIFF 40224 (4 lines) SWANSEA 52189
 NEWPORT 63117 (2 lines)
 MANUFACTURERS OF MIRRORS
Copper-backed by the most modern process
 Plate-Glass replacements promptly effected
 'Triplex' Safety Glass Products
 THE LARGEST STOCKHOLDERS IN WALES

NEXT HOME FIXTURE

**CARDIFF
 V.
 BRIDGEND**

SEPTEMBER 11th 1968
 Kick off 6 p.m.

Caerphilly Concrete Products Ltd.

SPECIALISTS IN ALL TYPES OF FENCING

Subsidiary Company

CCP BUILDING & DEMOLITION Co. Ltd.

Head Office:

Old Wernddu Brickworks
WERNDDU
CAERPHILLY
Telephone 2304

JOHN CORY (Travel) LTD.

WORLD WIDE TRAVEL

by,

LAND, SEA and AIR

FOR RUGBY EXCURSIONS TO
PARIS, DUBLIN & EDINBURGH

Contact us at :-

Mount Stuart House
CARDIFF
Telephone: 27321

or

at Evan Roberts Ltd.
Kingsway House
CARDIFF
Telephone: 31507

INVEST with the PRINCIPALITY

WALES' largest Building Society

ATTRACTIVE RATES OF INTEREST PAID

ASSETS NOW EXCEED £22,500,00

ALL SHARES AND DEPOSITS ARE TRUSTEE INVESTMENTS

write or call for free brochure

**PRINCIPALITY
BUILDING SOCIETY**
QUEEN STREET CARDIFF
Telephone 42242

Branch Offices: BANGOR BARRY CARMARTHEN COLWYN BAY
HEREFORD LONDON KINGSTON-onTHAMES NEWPORT (Mon.)
SHREWSBURY SWANSEA and many Agents

For your

CLUB

REGIMENTAL

UNIVERSITY

and

OLD-BOYS TIES, BADGES and SCARVES

QUOTATIONS GIVEN FOR YOUR OWN DESIGN

CALDERS

A. CALDER and Sons Limited

98 QUEEN STREET

CARDIFF 31701

THE KINGSWAY
SWANSEA

WYNDHAM STREET
BRIDGEND

FOR MEN WHO CAN HANDLE A FISTFUL OF FLAVOUR!



crystal clear
TANKARD
 the most refreshing
 beer of all

BREWED BY WHITBREAD



FIRST XV FIXTURES

Date	Opponents	Venue	Result
1968			
Sept. 4	Glam. Wanderers	H	27-12
7	Welsh Academicals	H	
11	Bridgend	H	
14	London-Welsh	A	
18	Bristol	H	
21	Coventry	H	
25	Gloucester	A	
28	Aberavon	A	
Oct. 2	Penarth	A	
5	Newport	H	
9	Newbridge	H	
12	Northampton	A	
16	Pontypool	H	
19	Cambridge Univ.	A	
26	Galashiels	H	
Nov. 2	Oxford Univ.	H	
9	Newport	A	
16	Wasps	H	
23	Llanelli	H	
30	Ebbw Vale	H	
Dec. 7	Swansea	A	
11	South African Univ.	H	(All Pay)

14	Harlequins	A	
26	Liverpool	H	
27	Universities Ath. U.	H	
28	London-Welsh	H	
1969			
Jan. 1	Galashiels	A	
2	Watsonians	A	
11	Coventry	A	
25	Aberavon	H	
Feb. 1	Pontypridd	H	
8	Bristol	A	
15	Newport	H	
22	Llanelli	A	
Mar. 1	Newport	A	
15	Swansea	H	
22	Penarth	H	
29	Headingley	A	
Apr. 5	Barbarians	H	
7	Harlequins	H	
14	Bridgend	A	
19	Liverpool	A	
21	Birkenhead Park	A	
22	Chester	A	
26	Sevens (All Pay)	H	
30	Pontypool	A	

Member of Victoria Club, London
 National Sporting League, London

For All That is Best in Racing . . .

JACK WILLIAMS

TURF ACCOUNTANT

LINCOLNSHIRE HOUSE, LANSDOWNE ROAD
 CARDIFF, CF1 1NT
 Cardiff 29763 (all lines)

LETTER BETTING A SPECIALITY (Free Postage)

GENUINE "NO LIMIT" TERMS TO ACCOUNT CLIENTS

PAYMENT ON THE 4th HORSE IN ALL HANDICAPS OF 20
 OR MORE RUNNERS



RUGBY INTERNATIONAL SCOTLAND v. WALES

SATURDAY, 1 FEBRUARY, 1969

'Specials' to
 EDINBURGH from Cardiff,
 Rhondda, Merthyr and
 Rhymney Valley Stations

Party Organisers write now for full
 details to the — Divisional Manager,
 Marland House, Central Square, Cardiff



British Rail

WELSH BREWERS
 LIMITED

supply

HANCOCKS

and

M. & B.

to the

ATHLETIC CLUB

Branches also at: NEWPORT BARGOED
 PONTYPOOL BARRY DOCK TREDEGAR
 PONTYPRIDD EBBW VALE and
 PORT TALBOT

We hope the match is a good one
 for 'good points' do interest us both
 — and after the match you'll see
 many in the furniture on show at
 the Roath

the
ROATH
 furnishing co.

42 CITY ROAD CARDIFF

Telephone CARDIFF 30421

WALES' LEADING SPORTS SUPPLIERS



SEER SPORTS

LIMITED

56 COWBRIDGE ROAD EAST
68 CASTLE STREET, CAERPHILLY

Tel: 24880
Tel: 3433

SOLE SUPPLIERS OF SPORTS EQUIPMENT TO
CARDIFF RUGBY CLUB

SEE OUR FABULOUS NEW 'SEER LUXE' RUGBY JERSEYS AS WORN
BY THE LEADING CLUBS — SEND NOW FOR FREE BROCHURES

Special Discounts to Clubs

RED & WHITE SERVICES LTD.

TOURS and EXCURSIONS
EXPRESS SERVICES
LOCAL SERVICES
PRIVATE HIRE

Specialists in
Luxury Coach Travel

Head Office:
BULWARK, CHEPSTOW
Mon.

Telephone: 2326/7/8

Local Office:
CENTRAL BUS STATION
WOOD STREET
CARDIFF

Telephone: 37939

JOHN MORGAN (BUILDERS) LIMITED

Building and Civil
Engineering Contractors
Reinforced Concrete
and Piling Specialists

Contractor to
H. M. Government

Registered Offices:
387 NEWPORT ROAD
CARDIFF

Telegrams:
"Jaymorgan"
Telephones:
42651 (10 lines)