

CARDIFF RUGBY CLUB

SEASON 1968 - 1969



CARDIFF
ARMS PARK

CARDIFF v. BRIDGEND



WEDNESDAY, 11th SEPTEMBER, 1968

KICK OFF 6.00 P.M.

OFFICIAL PROGRAMME

PRICE SIXPENCE

PROVINCIAL PRINTING AND PUBLISHING CO., LTD., FERRY ROAD, CARDIFF

Cardiff v. Bridgend

We welcome Bridgend to the Cardiff Arms Park at a time of the season when teams are still at the stage of flexing their muscles, as it were, for the next arduous eight months. Bridgend entertained the Italian club Roma last Saturday and they evidently won easily enough by 13-0. They will undoubtedly provide a serious test this evening, and again the Cardiff side will have to be reshuffled after all the commitments of last week-end. The various reserves did well to beat Welsh Academicals 30-0, but the true depth of playing strength lay in the fact that the "Rags XV" also won their game at Taibach.

On Saturday last at the Adrian Stoop Memorial Ground, the Cardiff Sevens distinguished themselves by winning the Wavell Wakefield Trophy at the Harlequins Invitation Seven-a-side Tournament. This Sevens Tournament, the first of its kind to be organised by the Harlequins proved an outstanding success, and they hope to organise it annually in future. The Cardiff players were in devastating form and their superlative fitness and technique mercilessly destroyed all opposition. Billy Hullin who scored four tries ran brilliantly and was given plenty of possession by the tireless work of Elwyn Williams, Meirion Davies and John Hickey; centres John Williams (4 tries) and Nick Williams (3 tries) snapped up every available chance, whilst the versatile Tony Williams not only captained the side admirably, but also converted eight of the tries scored. Lord Wakefield of Kendal, President of the Harlequin Football Club, presented a most handsome trophy to the winners and was most generous in his praise of the manner in which it was won.

This was particularly noteworthy for not only was the strongly fancied Loughborough team overcome at the first hurdle, but in both the semi-final and final games Cardiff recovered from the shock of an early first minute reverse and swept on to win with an almost contemptuous assurance. A standing ovation from the crowd in appreciation of the delightful passing and handling left one in no doubt of the fact that they were most worthy and popular winners. For those supporters interested in the statistical side and also of the composition of the participating teams we give below details of the results.

FIRST ROUND

Bath	5	Llanelli	10
North of Ireland	5	Harlequins	11
Cardiff	16	Loughborough Colleges	6
Blackheath	9	Melrose	8

SEMI-FINALS

Llanelli	5	Harlequins	8
Cardiff	18	Blackheath	13

FINAL

Cardiff	21	Harlequins	13
---------	----	------------	----

PLATE FINAL

(Open to teams eliminated in first round)

Melrose	16	North of Ireland	15
---------	----	------------------	----

Know the Laws - No. 22

by FRED CROSTER

When these notes were inaugurated at the beginning of last season, it was envisaged that they might run for the first half only and here we are now, at the beginning of a new season one year later and the surface has only been scratched. This is a reflection on the complexity of the laws which govern our game and a vindication of my constant plea for simplicity.

It is commonly agreed that association football is a much easier game to follow and understand than our own. Why is this? Simply because their laws make it so. Not so many years ago, their governing body got down to the task of reducing their laws to the minimum and making them as easy as possible for players and spectators alike to follow, even for the youngest schoolboy to be able to understand. For commercial reasons they were determined to fully exploit the crowd pulling appeal of their code. It's as simple as that. They certainly succeeded and our administrators must go along with this thinking.

A step in this direction is the introduction this season of the amendment to minimise the fast becoming abhorrent, kick, kick, kick, to which we were being subjected.

Referees, spectators and the majority of players, especially the fit and dedicated ones are agreed that up to now it is an unqualified success. The high scores certainly reflect that opinion.

Exemplifying my previous comments on complexity, despite the thought which went in to this amendment there was an anomaly which it took the referees themselves to find out. It concerns "Kick Off".

Previously, if the ball went directly into touch from a Kick Off, it could either be accepted, with a resulting line-out where the ball went in, or a re-kick, or a scrum in the centre at the discretion of the opposing skipper. What now? The Welsh Society of Referees, at their meeting, only last Friday discussed this point and agreed that in such a case a line-out would be awarded on the line. The half way line if kicked off from the centre, or the 25yd., line, if it were from a drop out — and this is an interesting point — from on the actual 25yd., line, thus within the prohibited area. If the drop out were from behind the line then the new ruling would not be applicable.

This Society decision will now go to the W.R.U. for 'vetting', but referees will apply it forthwith pending further instructions.

CARDIFF RUGBY FOOTBALL CLUB

SEASON 1968/69

Season Tickets are now available, and may be obtained from the Club Offices at the following prices:

SOUTH LOWER/UPPER GRAND STAND	£3 10 0
JUNIOR STAND SEASON TICKET (Under 15)	£1 15 0
FIELD/ENCLOSURE (Combined)	£2 0 0
Old Age Pensioner's FIELD TICKET	10 6
(BOOKS MUST BE SHOWN)	

Application must be accompanied by postal order or cheque made payable to the CARDIFF ATHLETIC CLUB and stamped addressed envelope.

SUNDAY EXPRESS

THE BEST FOR CARDIFF RUGBY REPORTS

—WITH A BIG MATCH SPECIAL

EACH WEEK BY

KEN JONES

WELSH HOSPITALS & HEALTH SERVICES ASSOCIATION

OVER FIFTY YEARS OF SERVICE
Founded 1912



Benefits all additional and supplementary to the
National Health Service
CASH GRANTS TO HOSPITAL IN-PATIENTS
£3/10/0 or £7/0/0 per week
Dependent on Marital Status and Rate of
Contribution

PLUS:—An Extra Week's Benefit for Convalescence.

Also valuable and generous benefits for:—

Hospital Out-Patients : Maternity : Convalescent Homes
Optical Appliances : Dentures : Local Authority Home Help
Physiotherapy : Private Specialist Consultation : etc.

SUBSCRIPTION RATES

1/- or 2/- per week 13/- or 26/- per quarter
£2/12/0 or £5/4/0 per Annum

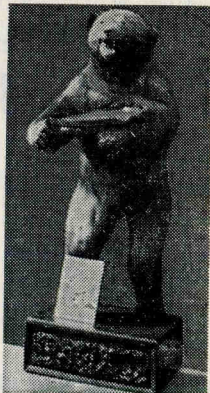
Send for details today from B. Glanville Davies, General Secretary,
Welsh Hospital and Health Services Association, 60 Newport Road,
Cardiff.

Lewis Darbey & Co.

TOBACCONISTS — HAIRDRESSERS
and CONFECTIONERS

BRANCHES IN CARDIFF

84 ST. MARY STREET 100 QUEEN STREET
3 ROYAL BUILDINGS, PARK PLACE
OXFORD HOUSE, THE HAYES
7 MOUNT STUART SQUARE
QUEEN STREET ARCADE
53 WELLFIELD ROAD
Telephone Cardiff 33443



CARDIFF ATHLETIC CLUB DEVELOPMENT FUND

CARDIFF ARMS PARK

CARDIFF

(Registered under the Betting, Gaming and Lotteries Act, 1963)

Promoters: R. F. TROTT and D. G. GRANT

DAILY PRIZES OF £20 £10 & 2 at £5

£240 PER WEEK

Agents and members are still required for the Daily Prize Draw run in conjunction with the Development Fund. The subscription is One Shilling per week only for 24 chances.

Please complete and return this form.

* I wish to become an Agent and shall be obliged if the Organiser can call to see me.

* I wish to become a Member of the draw and shall be obliged if you will advise me of the name and address of your nearest agent.

* I wish to become a Member of the draw for the next fifty-two weeks and enclose my cheque for £2 12s. 0d.

NAME

ADDRESS

*Please delete where necessary

GLAMTAX (CARDIFF) LTD.

ADJOINING THE CARDIFF ARMS PARK

FULL 24 HOUR TAXI SERVICE

Telephone Cardiff 26363

Agents for:
GODFREY DAVIS CAR and VAN RENTAL

**BUILDING & HOME IMPROVEMENT
MATERIALS**

They're All At



BARRY BRIDGEND CARDIFF NEWPORT SWANSEA

We may not be able to interpret new rules — but we can interpret your Central Heating requirements. Give us a try . . . you will find that we are on the ball

D. MORGAN EDWARDS LTD.

Telephone CARDIFF 37338-9

THE HOUSE WARMING CENTRE
17-21 CASTLE ST., CARDIFF

CENTRAL HEATING, KITCHEN and BATHROOM
EQUIPMENT — MERCHANTS to HEATING and
ALLIED TRADES



Read J.B.G. on
RUGBY
in the



WESTERN MAIL

**OVER THE
BAR**



**Take
Courage**

Cardiff

- 15. D. GETHIN
- 14. J. H. WILLIAMS
- 13. A. D. WILLIAMS
- 12. B. WINTER
- 11. N. WILLIAMS
- 10. I. LEWIS
- 9. G. SAMUEL
- 1. C. H. NORRIS (Capt.)
- 2. M. DAVIES
- 3. R. BEARD
- 4. I. ROBINSON
- 5. J. E. DAVIES
- 6. E. R. WILLIAMS
- 8. J. HARDING
- 7. C. EVANS

- Full Back
- Right Wing
- Right Centre
- Left Centre
- Left Wing
- Outside Half
- Inside Half
- Forwards



Referee: E. M. LEWIS (Abertillery)

Bridgend

- R. THOMAS 15.
- J. WILLIAMS 14.
- R. EVANS 13.
- D. THOMAS 12.
- L. DAVIES 11.
- B. GRIFFITHS 10.
- W. JONES 9.
- D. BRAIN 1.
- G. LLOYD 2.
- L. THOMAS 3.
- P. WILLIAMS 4.
- H. EVANS 5.
- GARY PROTHEROE 6.
- G. PROTHEROE 8.
- G. COLLIER 7.

NEXT HOME FIXTURE

**Cardiff
Athletic XV**

v.

Senghenydd

SEPTEMBER 14th 1968

Kick off 3 p.m.



*Dry Cleaning
Service*

FOR YOUR DRY-CLEANING AND LAUNDRY
'GET IN TOUCH WITH'

Gwyn Nicholls & Winfield

LIMITED

LLANDAFF NORTH

Telephone CARDIFF 72231/2

**PROVINCIAL PRINTING
AND PUBLISHING CO. LTD**

FERRY ROAD, CARDIFF

Telephone CARDIFF 28729

WEDDING STATIONERY SUPPLIED

WHOLESALE GLASS MERCHANTS
AND GLAZING CONTRACTORS

WELSH GLASS WORKS LTD.

CARDIFF 40224 (4 lines)

SWANSEA 52189

NEWPORT 63117 (2 lines)

MANUFACTURERS OF MIRRORS

Copper-backed by the most modern process

Plate-Glass replacements promptly effected

"Triplex" Safety Glass Products

THE LARGEST STOCKHOLDERS IN WALES

SPACE TO LET

Caerphilly Concrete Products Ltd.

SPECIALISTS IN ALL TYPES OF FENCING

Subsidiary Company

CCP BUILDING & DEMOLITION Co. Ltd.

Head Office:

Old Wernddu Brickworks
WERNDDU
CAERPHILLY
Telephone 2304

JOHN CORY (Travel) LTD.

WORLD WIDE TRAVEL

by,

LAND, SEA and AIR

FOR RUGBY EXCURSIONS TO
PARIS, DUBLIN & EDINBURGH

Contact us at :-

Mount Stuart House
CARDIFF
Telephone: 27321

or

at Evan Roberts Ltd.
Kingsway House
CARDIFF
Telephone: 31507

INVEST with the PRINCIPALITY

WALES' largest Building Society

ATTRACTIVE RATES OF INTEREST PAID

ASSETS NOW EXCEED £22,500,00

ALL SHARES AND DEPOSITS ARE TRUSTEE INVESTMENTS

write or call for free brochure

**PRINCIPALITY
BUILDING SOCIETY**
QUEEN STREET CARDIFF
Telephone 42242

Branch Offices: BANGOR BARRY CARMARTHEN COLWYN BAY
HEREFORD LONDON KINGSTON-onTHAMES NEWPORT (Mon.)
SHREWSBURY SWANSEA and many Agents

For your

CLUB

REGIMENTAL

UNIVERSITY

and

OLD-BOYS TIES, BADGES and SCARVES

QUOTATIONS GIVEN FOR YOUR OWN DESIGN

CALDERS

A. CALDER and Sons Limited

98 QUEEN STREET

CARDIFF 31701

THE KINGSWAY
SWANSEA

WYNDHAM STREET
BRIDGEND

FOR MEN WHO CAN HANDLE A FISTFUL OF FLAVOUR!



crystal clear
TANKARD
 the most refreshing
 beer of all

BREWED BY WHITBREAD



FIRST XV FIXTURES

Date	Opponents	Venue	Result
1968			
Sept. 4	Glam. Wanderers	H	27-12
7	Welsh Academicals	H	30-0
11	Bridgend ..	H
14	London-Welsh	A
18	Bristol ..	H
21	Coventry ..	H
25	Gloucester ..	A
28	Aberavon ..	A
Oct. 2	Penarth ..	A
5	Newport ..	H
9	Newbridge ..	H
12	Northampton	A
16	Pontypool ..	H
19	Cambridge Univ.	A
26	Galashiels ..	H
Nov. 2	Oxford Univ.	H
9	Newport ..	A
16	Wasps ..	H
23	Llanelli ..	H
30	Ebbw Vale ..	H
Dec. 7	Swansea ..	A
11	South African Univ.	H	(All Pay)

14	Harlequins ..	A
26	Liverpool ..	H
27	Universities Ath. U.	H
28	London-Welsh	H

1969

Jan. 1	Galashiels ..	A
2	Watsonians ..	A
11	Coventry ..	A
25	Aberavon ..	H
Feb. 1	Pontypridd ..	H
8	Bristol ..	A
15	Newport ..	H
22	Llanelli ..	A
Mar. 1	Newport ..	A
15	Swansea ..	H
22	Penarth ..	H
29	Headingley ..	A
Apr. 5	Barbarians ..	H
7	Harlequins ..	H
14	Bridgend ..	A
19	Liverpool ..	A
21	Birkenhead Park	A
22	Chester ..	A
26	Sevens (All Pay)	H
30	Pontypool ..	A

Branches also at: NEWPORT BARGOED
 PONTYPOOL BARRY DOCK TREDEGAR
 PONTYPRIDD EBBW VALE and
 PORT TALBOT

the
ROATH

furnishing co.

We hope the match is a good one
 for 'good points' do interest us both
 — and after the match you'll see
 many in the furniture on show at
 the Roath

42 CITY ROAD CARDIFF

Telephone CARDIFF 30421

Member of Victoria Club, London
 National Sporting League, London

For All That is Best in Racing . . .

JACK WILLIAMS

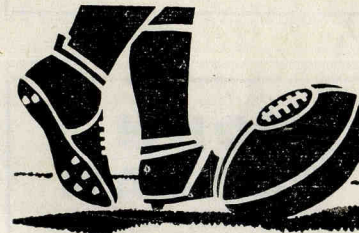
TURF ACCOUNTANT

LINCOLNSHIRE HOUSE, LANSDOWNE ROAD
 CARDIFF, CF1 1NT
 Cardiff 29763 (all lines)

LETTER BETTING A SPECIALITY (Free Postage)

GENUINE "NO LIMIT" TERMS TO ACCOUNT CLIENTS

PAYMENT ON THE 4th HORSE IN ALL HANDICAPS OF 20
 OR MORE RUNNERS



**RUGBY
 INTERNATIONAL**

SCOTLAND v. WALES

SATURDAY, 1 FEBRUARY, 1969

'Specials' to
EDINBURGH from Cardiff,
Rhondda, Merthyr and
Rhymney Valley Stations

Party Organisers write now for full
 details to the — Divisional Manager,
 Marland House, Central Square, Cardiff



British Rail

**WELSH BREWERS
 LIMITED**

supply

HANCOCKS

and

M. & B.

to the

ATHLETIC CLUB

WALES' LEADING SPORTS SUPPLIERS



SEER SPORTS

LIMITED

56 COWBRIDGE ROAD EAST
68 CASTLE STREET, CAERPHILLY

Tel: 24880
Tel: 3433

SOLE SUPPLIERS OF SPORTS EQUIPMENT TO
CARDIFF RUGBY CLUB

SEE OUR FABULOUS NEW 'SEER LUXE' RUGBY JERSEYS AS WORN
BY THE LEADING CLUBS — SEND NOW FOR FREE BROCHURES

Special Discounts to Clubs

RED & WHITE SERVICES LTD.

TOURS and EXCURSIONS
EXPRESS SERVICES
LOCAL SERVICES
PRIVATE HIRE

Specialists in
Luxury Coach Travel

Head Office:
BULWARK, CHEPSTOW
Mon.

Telephone: 2326/7/8

Local Office:
CENTRAL BUS STATION
WOOD STREET
CARDIFF

Telephone: 37939

JOHN MORGAN (BUILDERS) LIMITED

Building and Civil
Engineering Contractors
Reinforced Concrete
and Piling Specialists

Contractor to
H. M. Government

Registered Offices:
387 NEWPORT ROAD
CARDIFF

Telegrams:
"Jaymorgan"
Telephones:
42651 (10 lines)