

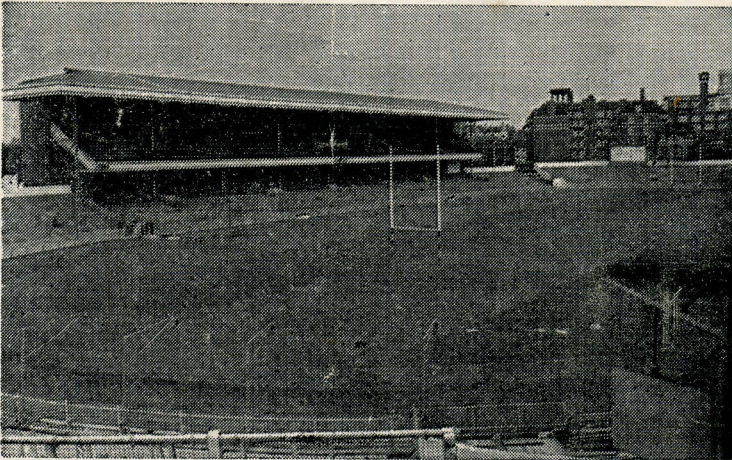
CARDIFF RUGBY CLUB

SEASON 1968 - 1969



**CARDIFF
ARMS PARK**

CARDIFF v. BRISTOL



WEDNESDAY, 18th SEPTEMBER, 1968

KICK OFF 5.45 P.M.

OFFICIAL PROGRAMME

PRICE SIXPENCE

PROVINCIAL PRINTING AND PUBLISHING CO., LTD., FERRY ROAD, CARDIFF

Cardiff v. Bristol

Our visitors are most welcome to the Arms Park this evening, for in the last decade there have been some thrilling encounters between the two clubs. These have been made all the more enjoyable by the fact that Bristol is a most attractive team to watch and rarely has there been any rugby from their players of a dull negative type. Their attacking policy paid handsome dividends on Saturday last when they defeated Newport 21-13 at Rodney Parade; any team which is capable of gaining such a victory will require stern opposition this evening. Let us hope that the memory of that dismal mid-week defeat against Bridgend last Wednesday will be quickly erased from the minds of spectators by a performance of far higher quality tonight.

However, even that game may prove to be a blessing in disguise, since there will be no concern over ground records, which can often prove to be a curse, as inevitably a note of caution tends to creep into the play when efforts are made to preserve them at all costs. Now that the shackles are off, it is as well to get back into winning ways and a good boost for morale was the convincing 19-8 defeat of London Welsh on Saturday. The Selectors have retained most of that side for this evening's match, although the promising winger Alex Finlayson is not available as he has been selected for the British Police XV, together with Terry Stephenson. Congratulations to both. In the second row Ian Robinson returns to allow John Davies to take up his duties again as skipper of the 'Rags', who travel to play Bristol United tonight. They also had a convincing 15-3 victory over Senghenydd last Saturday.

Finally, and a shade prematurely, we offer our congratulations to Billy Hullin who on Friday next is to be married at Llanishen Church. Wisely, he is having a 'stag' night after this evening's game, so there is every chance of a recovery by Friday morning. Best wishes of all Club members go to both himself and his bride-to-be.

B.M.

Know the Laws - No. 23

by FRED CROSTER

I wish to take this opportunity of personally thanking all those Club members, who, after reading the notes in the programme for last Wednesday's game against Bridgend, made a point of expressing their pleasure at the decision to continue them again this season.

It is gratifying to know that they do at least read them and appreciate them. As several said in the Clubhouse, in the company of some Bridgend supporters, 'we can only benefit by them and can always teach you something *off* the field, even so you won so decisively *on* the field.' Fair comment!

Again then, on the new Laws and 'kicking to touch'. Last week I informed you of the decision taken at the Referees' Society meeting regarding 'kick off' making the point that whereas previously, if the ball were kicked directly into touch from a kick off, at the centre of the field or *on* (not behind) the 25yd. line, there could be either: a scrum; kick again or a line-out where the ball went into touch, the choice being at the discretion of the opposing skipper; but *now*, the line-out must take place *on the line from where the kick had been taken*.

This is accepted, but to prevent any misunderstanding, this does not mean that *always* in such cases *must* there be a line-out awarded.

The opposing skipper still has the choice, as before, of a scrum or re-kick, *or* line-out.

The only difference is the place of the line-out, if he should make that choice.

For the benefit of the serious student of the Laws, and I know there are some, Law 21, section (f) covers the point.

CARDIFF RUGBY FOOTBALL CLUB

SEASON 1968/69

Season Tickets are now available, and may be obtained from the Club Offices at the following prices:

SOUTH LOWER/UPPER GRAND STAND	£3 10 0
JUNIOR STAND SEASON TICKET (Under 15)	£1 15 0
FIELD/ENCLOSURE (Combined)	£2 0 0
Old Age Pensioner's FIELD TICKET (BOOKS MUST BE SHOWN)	10 6

Application must be accompanied by postal order or cheque made payable to the CARDIFF ATHLETIC CLUB and stamped addressed envelope.

SUNDAY EXPRESS

THE BEST FOR CARDIFF RUGBY REPORTS

—WITH A BIG MATCH SPECIAL

EACH WEEK BY

KEN JONES

WELSH HOSPITALS & HEALTH SERVICES ASSOCIATION OVER FIFTY YEARS OF SERVICE

Founded 1912



Benefits all additional and supplementary to the
National Health Service

CASH GRANTS TO HOSPITAL IN-PATIENTS

£3/10/0 or £7/0/0 per week

Dependent on Marital Status and Rate of
Contribution

PLUS:—An Extra Week's Benefit for Convalescence.

Also valuable and generous benefits for:—

Hospital Out-Patients : Maternity : Convalescent Homes
Optical Appliances : Dentures : Local Authority Home Help
Physiotherapy : Private Specialist Consultation : etc.

SUBSCRIPTION RATES

1/- or 2/- per week 13/- or 26/- per quarter
£2/12/0 or £5/4/0 per Annum

Send for details today from B. Glanville Davies, General Secretary,
Welsh Hospital and Health Services Association, 60 Newport Road,
Cardiff.

Lewis Darbey & Co.

TOBACCONISTS — HAIRDRESSERS
and CONFECTIONERS

BRANCHES IN CARDIFF

84 ST. MARY STREET 100 QUEEN STREET

3 ROYAL BUILDINGS, PARK PLACE

OXFORD HOUSE, THE HAYES

7 MOUNT STUART SQUARE

QUEEN STREET ARCADE

53 WELLFIELD ROAD

Telephone Cardiff 33443



CARDIFF ATHLETIC CLUB DEVELOPMENT FUND

CARDIFF ARMS PARK

CARDIFF

(Registered under the Betting, Gaming and Lotteries Act, 1963)

Promoters: R. F. TROTT and D. G. GRANT

DAILY PRIZES OF £20 £10 & 2 at £5

£240 PER WEEK

Agents and members are still required for the Daily Prize Draw
run in conjunction with the Development Fund. The subscription
is One Shilling per week only for 24 chances.

Please complete and return this form.

* I wish to become an Agent and shall be obliged if the Organiser
can call to see me.

* I wish to become a Member of the draw and shall be obliged
if you will advise me of the name and address of your nearest agent.

* I wish to become a Member of the draw for the next fifty-two
weeks and enclose my cheque for £2 12s. 0d.

NAME

ADDRESS

*Please delete where necessary

GLAMTAX (CARDIFF) LTD.

ADJOINING THE CARDIFF ARMS PARK

FULL 24 HOUR TAXI SERVICE

Telephone Cardiff 26363

Agents for:

GODFREY DAVIS CAR and VAN RENTAL

**BUILDING & HOME IMPROVEMENT
MATERIALS.**

They're All At



BARRY BRIDGEND CARDIFF NEWPORT SWANSEA

We may not be able to interpret new rules — but we can interpret your Central Heating requirements. Give us a try . . . you will find that we are on the ball

D. MORGAN EDWARDS LTD.

Telephone CARDIFF 37338-9

THE HOUSE WARMING CENTRE

17-21 CASTLE ST., CARDIFF

CENTRAL HEATING, KITCHEN and BATHROOM
EQUIPMENT — MERCHANTS to HEATING and
ALLIED TRADES



Read J.B.G. on
RUGBY
in the



WESTERN MAIL

**OVER THE
BAR**



**Take
Courage**

Cardiff

- 15. D. GETHIN
- 14. J. H. WILLIAMS
- 13. A. D. WILLIAMS
- 12. R. DUGGAN
- 11. P. L. JONES
- 10. G. SAMUEL
- 9. W. HULLIN
- 1. R. BEARD
- 2. G. DAVIES
- 3. C. H. NORRIS (Capt.)
- 4. M. BRAITHWAITE
- 5. I. ROBINSON
- 6. E. R. WILLIAMS
- 8. J. HICKEY
- 7. C. EVANS

- Full Back
- Right Wing
- Right Centre
- Left Centre
- Left Wing
- Outside Half
- Inside Half
- Forwards



Referee: B. G. SWAIN (Ystalyfera)

Bristol

- P. KNIGHT A.
- K. PLUMMER B.
- D. TYLER C.
- V. PARKIN D.
- M. COLLINS E.
- A. NICHOLLS F.
- R. TAYLOR G.
- A. ROGERS H.
- D. IMPEY I.
- B. DOVEY J.
- ~~REDMAN~~ D. WATT K.
- B. NELMES L.
- D. ROLLITT M.
- G. PATTERSON N.
- A. MUNDEN O.

**MAE
GUINNESS**



**YN DDA
I CHWI**



**Dry Cleaning
Service**

FOR YOUR DRY-CLEANING AND LAUNDRY
'GET IN TOUCH WITH'

Gwyn Nicholls & Winfield

LIMITED

LLANDAFF NORTH

Telephone CARDIFF 72231/2

**PROVINCIAL PRINTING
AND PUBLISHING CO. LTD**

FERRY ROAD, CARDIFF

Telephone CARDIFF 28729

WEDDING STATIONERY SUPPLIED

WHOLESALE GLASS MERCHANTS
AND GLAZING CONTRACTORS

WELSH GLASS WORKS LTD.

CARDIFF 40224 (4 lines)

SWANSEA 52189

NEWPORT 63117 (2 lines)

MANUFACTURERS OF MIRRORS

Copper-backed by the most modern process

Plate-Glass replacements promptly effected

'Triplex' Safety Glass Products

THE LARGEST STOCKHOLDERS IN WALES

SPACE TO LET

Caerphilly Concrete Products Ltd.

SPECIALISTS IN ALL TYPES OF FENCING

Subsidiary Company

CCP BUILDING & DEMOLITION Co. Ltd.

Head Office:

Old Wernddu Brickworks
WERNDU
CAERPHILLY
Telephone 2304

JOHN CORY (Travel) LTD.

WORLD WIDE TRAVEL

by,

LAND, SEA and AIR

FOR RUGBY EXCURSIONS TO
PARIS, DUBLIN & EDINBURGH

Contact us at :-

Mount Stuart House
CARDIFF
Telephone: 27321

or

at Evan Roberts Ltd.
Kingsway House
CARDIFF
Telephone: 31507

INVEST with the PRINCIPALITY

WALES' largest Building Society

ATTRACTIVE RATES OF INTEREST PAID

ASSETS NOW EXCEED £22,500,00

ALL SHARES AND DEPOSITS ARE TRUSTEE INVESTMENTS

write or call for free brochure

**PRINCIPALITY
BUILDING SOCIETY**
QUEEN STREET CARDIFF
Telephone 42242

Branch Offices: BANGOR BARRY CARMARTHEN COLWYN BAY
HEREFORD LONDON KINGSTON-ON-THAMES NEWPORT (Mon.)
SHREWSBURY SWANSEA and many Agents

For your

CLUB

REGIMENTAL

UNIVERSITY

and

OLD-BOYS TIES, BADGES and SCARVES

QUOTATIONS GIVEN FOR YOUR OWN DESIGN

CALDERS

A. CALDER and Sons Limited
98 QUEEN STREET
CARDIFF 31701

THE KINGSWAY
SWANSEA

WYNDHAM STREET
BRIDGEND

FOR MEN WHO CAN HANDLE A FISTFUL OF FLAVOUR!



crystal clear
TANKARD
 the most refreshing
 beer of all

BREWED BY WHITBREAD



FIRST XV FIXTURES

Date	Opponents	Venue	Result
1968			
Sept. 4	Glam. Wanderers	H	27-12
7	Welsh Academicals	H	30-0
11	Bridgend	H	6-11
14	London-Welsh	A	19-8
18	Bristol	H	
21	Coventry	H	
25	Gloucester	A	
28	Aberavon	A	
Oct. 2	Penarth	A	
5	Newport	H	
9	Newbridge	H	
12	Northampton	A	
16	Pontypool	H	
19	Cambridge Univ.	A	
26	Galashiels	H	
Nov. 2	Oxford Univ.	H	
9	Newport	A	
16	Wasps	H	
23	Llanelli	H	
30	Ebbw Vale	H	
Dec. 7	Swansea	A	
11	South African Univ.	H	(All Pay)

14	Harlequins	A	
26	Liverpool	H	
27	Universities Ath. U.	H	
28	London-Welsh	H	
1969			
Jan. 1	Galashiels	A	
2	Watsonians	A	
11	Coventry	A	
25	Aberavon	H	
Feb. 1	Pontypridd	H	
8	Bristol	A	
15	Newport	H	
22	Llanelli	A	
Mar. 1	Newport	A	
15	Swansea	H	
22	Penarth	H	
29	Headingley	A	
Apr. 5	Barbarians	H	
7	Harlequins	H	
14	Bridgend	A	
19	Liverpool	A	
21	Birkenhead Park	A	
22	Chester	A	
26	Sevens (All Pay)	H	
30	Pontypool	A	

Branches also at: NEWPORT BARGOED
 PONTYPOOL BARRY DOCK TREDEGAR
 PONTYPRIDD EBBW VALE and
 PORT TALBOT

We hope the match is a good one
 for 'good points' do interest us both
 — and after the match you'll see
 many in the furniture on show at
 the Roath

the
ROATH
 furnishing co.

42 CITY ROAD CARDIFF

Telephone CARDIFF 30421

Member of Victoria Club, London
 National Sporting League, London

For All That is Best in Racing . . .

JACK WILLIAMS

TURF ACCOUNTANT

LINCOLNSHIRE HOUSE, LANSDOWNE ROAD
 CARDIFF, CF1 1NT
 Cardiff 29763 (all lines)

LETTER BETTING A SPECIALITY (Free Postage)

GENUINE "NO LIMIT" TERMS TO ACCOUNT CLIENTS

PAYMENT ON THE 4th HORSE IN ALL HANDICAPS OF 20
 OR MORE RUNNERS



RUGBY
INTERNATIONAL
SCOTLAND v. WALES

SATURDAY, 1 FEBRUARY, 1969

'Specials' to
 EDINBURGH from Cardiff,
 Rhondda, Merthyr and
 Rhymney Valley Stations

Party Organisers write now for full
 details to the — Divisional Manager,
 Marland House, Central Square, Cardiff



British Rail

WELSH BREWERS
 LIMITED

supply

HANCOCKS

and

M. & B.

to the

ATHLETIC CLUB

WALES' LEADING SPORTS SUPPLIERS



SEER SPORTS

LIMITED

56 COWBRIDGE ROAD EAST
68 CASTLE STREET, CAERPHILLY

Tel: 24880
Tel: 3433

SOLE SUPPLIERS OF SPORTS EQUIPMENT TO
CARDIFF RUGBY CLUB

SEE OUR FABULOUS NEW 'SEER LUXE' RUGBY JERSEYS AS WORN
BY THE LEADING CLUBS — SEND NOW FOR FREE BROCHURES

Special Discounts to Clubs

RED & WHITE SERVICES LTD.

TOURS and EXCURSIONS
EXPRESS SERVICES
LOCAL SERVICES
PRIVATE HIRE

Specialists in
Luxury Coach Travel

Head Office:
BULWARK, CHEPSTOW
Mon.

Telephone: 2326/7/8

Local Office:
CENTRAL BUS STATION
WOOD STREET
CARDIFF

Telephone: 37939

JOHN MORGAN (BUILDERS) LIMITED

Building and Civil
Engineering Contractors
Reinforced Concrete
and Piling Specialists

Contractor to
H. M. Government

Registered Offices:
387 NEWPORT ROAD
CARDIFF

Telegrams:
"Javmorgan"
Telephones:
42651 (10 lines)