

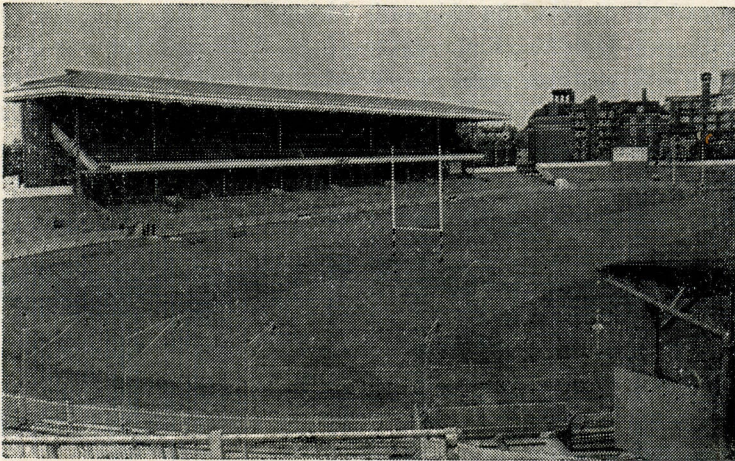
CARDIFF RUGBY CLUB

SEASON 1968 - 1969



**CARDIFF
ARMS PARK**

CARDIFF v. NEWBRIDGE



WEDNESDAY, 9th OCTOBER, 1968

KICK OFF 5.00 P.M.

OFFICIAL PROGRAMME

PRICE SIXPENCE

PROVINCIAL PRINTING AND PUBLISHING CO., LTD., FERRY ROAD, CARDIFF

Cardiff v. Newbridge

We welcome our opponents for this early evening game sure in the knowledge that the Cardiff team will be making intensive efforts to halt the slide of the past few weeks. Fortunately the side is strengthened by the return of a few players, who have been unavailable recently, including Howard Norris, who is now fully recovered from his attack of tonsillitis. Also we welcome back Lynn Baxter from his Argentinian Tour and congratulate him on what was for him a successful tour, even though the record of the Welsh team was not impressive. Lynn was in fine form, when playing for the 'Rags' at Newport last Saturday and his lively forward play will be welcome.

The make-shift half-back partnership remains, but the threequarter line undergoes a major re-shuffle. Maurice Richards, understandably cannot obtain time off for this early kick-off, and there are changes on both wings as both Alec Finlayson and J. H. Williams come in. Ken Jones makes a re-appearance in the centre and no doubt will be anxious to show the selectors that he is back to his old form. Let us hope that the Cardiff players forget all about the disastrous month of September and play with confidence this evening, for only in this way will the team taste that success, which is so essential to morale.

A report on some current absentees reveals that Gareth Edwards will be absent for quite a few weeks with a ham-string injury, Barry John is not available until late October and Gerald Davies will be with Cambridge University until Christmas vacation. On the credit side Billy Hullin will be available next Saturday and John Uzzell's shoulder is steadily improving.

One final note is that next weeks kick-off against Pontypool is timed for 4.30 p.m. For those supporters who have queried these arrangements, it must be pointed out that the fixtures are made three or four seasons in advance and thus the present circumstances of no floodlighting, could not have been accurately foreseen.

B.M.

Know the Laws - No. 26

by FRED CROSTER

Just when I thought that I had dealt in its entirety with all aspects of 'Kicking to Touch', under the experimental law, I have been reminded by a refereeing friend of yet another point which has cropped up; as it is relevant and important it must be clarified.

Remember I discussed a 'Mark', made in the 'prohibited area' — outside your own 25yd., line, and then in order that he may be able to kick it directly into touch in order to gain ground, the player in question, retired behind the line to take his kick?

All in order, providing that the kick is taken in line with the 'Mark' and that the ball reaches the line parallel with the 'Mark' and the goal lines before it goes into touch.

Now, what has happened in some cases is that the player has retired some considerable distance from his original making of the 'Mark' in order to get behind the 25yd., line — this he is entitled to do — but then, the resulting kick to touch has not reached the required distance forward to the point of the actual 'Mark'.

Two interesting points emerge from this contingency.

1. If the ball had gone over the 25 and then directly into touch the decision must be a scrum on the spot where the 'Mark' had been made.
2. If the ball had *not* reached the 25 before it went into touch, the referee could apply the advantage law in favour of the opposition and thus permit the line-out to take place where the ball had entered touch inside the 25yd. area.

CARDIFF RUGBY FOOTBALL CLUB

SEASON 1968/69

Season Tickets are now available, and may be obtained from the Club Offices at the following prices:

SOUTH LOWER/UPPER GRAND STAND	£3 10 0
JUNIOR STAND SEASON TICKET (Under 15)	£1 15 0
FIELD/ENCLOSURE (Combined)	£2 0 0
Old Age Pensioner's FIELD TICKET	10 6
(BOOKS MUST BE SHOWN)	

Application must be accompanied by postal order or cheque made payable to the CARDIFF ATHLETIC CLUB and stamped addressed envelope.

BUILDING & HOME IMPROVEMENT
MATERIALS

They're All At



BARRY BRIDGEND CARDIFF NEWPORT SWANSEA

We may not be able to interpret new rules — but we can interpret your Central Heating requirements. Give us a try . . . you will find that we are on the ball

D. MORGAN EDWARDS LTD.

Telephone CARDIFF 37338-9

THE HOUSE WARMING CENTRE

17-21 CASTLE ST., CARDIFF

CENTRAL HEATING, KITCHEN and BATHROOM
EQUIPMENT — MERCHANTS to HEATING and
ALLIED TRADES



Read J.B.G. on
RUGBY
in the



WESTERN MAIL

**OVER THE
BAR**



**Take
Courage**

Cardiff

- 15. D. GETHIN
- 14. A. FINLAYSON
- 13. A. D. WILLIAMS
- 12. D. K. JONES
- 11. J. H. WILLIAMS
- 10. J. EVANS
- 9. L. LEWIS
- 1. C. H. NORRIS (Capt.)
- 2. G. DAVIES
- 3. R. BEARD
- 4. M. BRAITHWAITE
- 5. L. BAXTER
- 6. M. JOHN
- 8. J. HICKEY
- 7. E. WILLIAMS

- Full Back
- Right Wing
- Right Centre
- Left Centre
- Left Wing
- Outside Half
- Inside Half
- Forwards



Referee: J. B. MORGAN (Kenfig Hill)

Newbridge

- B. ANTHONY 15.
- J. WORWARD 14.
- D. EVANS 13.
- L. HEWER 12.
- C. HUGHES 11.
- L. THOMAS 10.
- T. EVANS 9.
- J. THOMAS 1.
- A. WILLIAMS 2.
- R. SHIPP 3.
- S. GEARY 4.
- A. EVANS 5.
- K. BRADDOCK 6.
- D. HUGHES (Capt.) 8.
- G. SHIPP 7.

MAE
GUINNESS



YN DDA
I CHWI



*Dry Cleaning
Service*

FOR YOUR DRY-CLEANING AND LAUNDRY
'GET IN TOUCH WITH'

Gwyn Nicholls & Winfield

LIMITED

LLANDAFF NORTH

Telephone CARDIFF 72231/2

PROVINCIAL PRINTING

AND PUBLISHING CO. LTD

FERRY ROAD, CARDIFF

Telephone CARDIFF 28729

WEDDING STATIONERY SUPPLIED

WHOLESALE GLASS MERCHANTS
AND GLAZING CONTRACTORS

WELSH GLASS WORKS LTD.

CARDIFF 40224 (4 lines) SWANSEA 52189

NEWPORT 63117 (2 lines)

MANUFACTURERS OF MIRRORS

Copper-backed by the most modern process

Plate-Glass replacements promptly effected

'Triplex' Safety Glass Products

THE LARGEST STOCKHOLDERS IN WALES

NEXT HOME FIXTURE

CARDIFF ATHLETIC

v.

HARLEQUIN WANDS.

SATURDAY, 12th OCTOBER, 1968 K.O. 3 p.m.

Caerphilly Concrete Products Ltd.

SPECIALISTS IN ALL TYPES OF FENCING

Subsidiary Company

CCP BUILDING & DEMOLITION Co. Ltd.

Head Office:

Old Wernddu Brickworks
WERNDU
CAERPHILLY
Telephone 2304

JOHN CORY (Travel) LTD.

WORLD WIDE TRAVEL

by,

LAND, SEA and AIR

FOR RUGBY EXCURSIONS TO
PARIS, DUBLIN & EDINBURGH

Contact us at :-

Mount Stuart House
CARDIFF
Telephone: 27321

or

at Evan Roberts Ltd.
Kingsway House
CARDIFF
Telephone: 31507

INVEST with the PRINCIPALITY

WALES' largest Building Society

ATTRACTIVE RATES OF INTEREST PAID

ASSETS NOW EXCEED £22,500,00

ALL SHARES AND DEPOSITS ARE TRUSTEE INVESTMENTS

write or call for free brochure

**PRINCIPALITY
BUILDING SOCIETY**
QUEEN STREET CARDIFF
Telephone 42242

Branch Offices: BANGOR BARRY CARMARTHEN COLWYN BAY
HEREFORD LONDON KINGSTON-on-THAMES NEWPORT (Mon.)
SHREWSBURY SWANSEA and many Agents

For your

CLUB
REGIMENTAL
UNIVERSITY

and

OLD-BOYS TIES, BADGES and SCARVES

QUOTATIONS GIVEN FOR YOUR OWN DESIGN

CALDERS

A. CALDER and Sons Limited
98 QUEEN STREET
CARDIFF 31701

THE KINGSWAY
SWANSEA

WYNDHAM STREET
BRIDGEND

FOR MEN WHO CAN HANDLE A FISTFUL OF FLAVOUR!



crystal clear
TANKARD
the most refreshing
beer of all

BREWED BY WHITBREAD



FIRST XV FIXTURES

Date	Opponents	Venue	Result
1968			
Sept. 4	Glam. Wanderers	H	27-12
7	Welsh Academicals	H	30-0
11	Bridgend	H	6-11
14	London-Welsh	A	19-8
18	Bristol	H	19-9
21	Coventry	H	3-6
25	Gloucester	A	6-15
28	Aberavon	A	3-6
Oct. 2	Penarth	A	17-0
5	Newport	H	6-11
9	Newbridge	H	
12	Northampton	A	
16	Pontypool	H	
19	Cambridge Univ.	A	
26	Galashiels	H	
Nov. 2	Oxford Univ.	H	
9	Newport	A	
16	Wasps	H	
23	Llanelli	H	
30	Ebbw Vale	H	
Dec. 7	Swansea	A	
11	South African Univ.	H	(All Pay)

14	Harlequins	A	
26	Liverpool	H	
27	Universities Ath. U.	H	
28	London-Welsh	H	

1969

Jan. 1	Galashiels	A	
2	Watsonians	A	
11	Coventry	A	
25	Aberavon	H	
Feb. 1	Pontypridd	H	
8	Bristol	A	
15	Newport	H	
22	Llanelli	A	
Mar. 1	Newport	A	
15	Swansea	H	
22	Penarth	H	
29	Headingley	A	
Apr. 5	Barbarians	H	
7	Harlequins	H	
14	Bridgend	A	
19	Liverpool	A	
21	Birkenhead Park	A	
22	Chester	A	
26	Sevens (All Pay)	H	
30	Pontypool	A	

Branches also at: NEWPORT BARGOED
PONTYPOOL BARRY DOCK TREDEGAR
PONTYPRIDD EBBW VALE and
PORT TALBOT

We hope the match is a good one for 'good points' do interest us both — and after the match you'll see many in the furniture on show at the Roath

the
ROATH
furnishing co.

42 CITY ROAD CARDIFF

Telephone CARDIFF 30421

Member of Victoria Club, London
National Sporting League, London

For All That is Best in Racing . . .

JACK WILLIAMS

TURF ACCOUNTANT

LINCOLNSHIRE HOUSE, LANSDOWNE ROAD
CARDIFF, CF1 1NT
Cardiff 29763 (all lines)

LETTER BETTING A SPECIALITY (Free Postage)

GENUINE "NO LIMIT" TERMS TO ACCOUNT CLIENTS

PAYMENT ON THE 4th HORSE IN ALL HANDICAPS OF 20
OR MORE RUNNERS



RUGBY
INTERNATIONAL
SCOTLAND v. WALES

SATURDAY, 1 FEBRUARY, 1969

'Specials' to
EDINBURGH from Cardiff,
Rhondda, Merthyr and
Rhymney Valley Stations

Party Organisers write now for full details to the — Divisional Manager, Marland House, Central Square, Cardiff



British Rail

WELSH BREWERS
LIMITED

supply

HANCOCKS

and

M. & B.

to the

ATHLETIC CLUB

WALES' LEADING SPORTS SUPPLIERS



SEER SPORTS

LIMITED

56 COWBRIDGE ROAD EAST
68 CASTLE STREET, CAERPHILLY

Tel: 24880
Tel: 3433

SOLE SUPPLIERS OF SPORTS EQUIPMENT TO
CARDIFF RUGBY CLUB

SEE OUR FABULOUS NEW 'SEER LUXE' RUGBY JERSEYS AS WORN
BY THE LEADING CLUBS — SEND NOW FOR FREE BROCHURES

Special Discounts to Clubs

RED & WHITE SERVICES LTD.

TOURS and EXCURSIONS
EXPRESS SERVICES
LOCAL SERVICES
PRIVATE HIRE

Specialists in
Luxury Coach Travel

Head Office:
BULWARK, CHEPSTOW
Mon.

Telephone: 2326/7/8

Local Office:
CENTRAL BUS STATION
WOOD STREET
CARDIFF

Telephone: 37939

JOHN MORGAN (BUILDERS) LIMITED

Building and Civil
Engineering Contractors
Reinforced Concrete
and Piling Specialists

Contractor to
H. M. Government

Registered Offices:
387 NEWPORT ROAD
CARDIFF

Telegrams:
"Jaymorgan"
Telephones:
42651 (10 lines)