

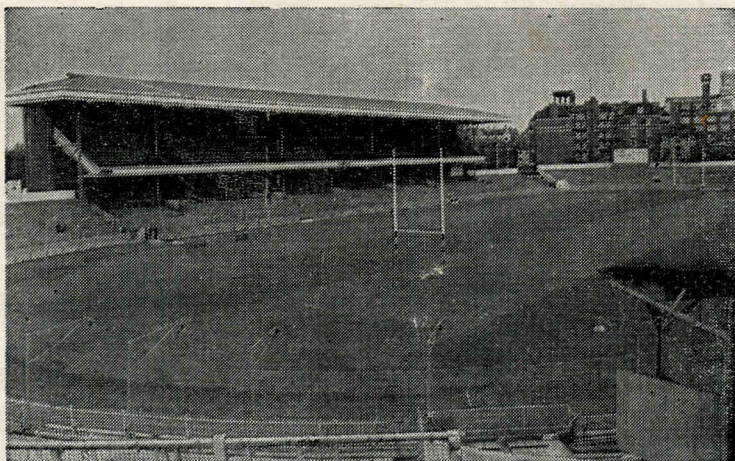
CARDIFF RUGBY CLUB

SEASON 1968 - 1969



**CARDIFF
ARMS PARK**

CARDIFF v. LLANELLI



SATURDAY, 23rd NOVEMBER, 1968

KICK OFF 3.00 P.M.

OFFICIAL PROGRAMME

PRICE SIXPENCE

PROVINCIAL PRINTING AND PUBLISHING CO., LTD., FERRY ROAD, CARDIFF

Cardiff v. Llanelli

Welcome to Llanelli, who on the evidence of results alone are enjoying a most successful season and their record proudly reads played 14, won 12, lost 1, drawn 1, Points for 261, Points against 98. However, it is not the fact that they have been winning so many matches, but rather it is the manner of their victories which has won for themselves a reputation of being one of the most attractive Clubs to watch in Wales. In many games they have crushed the opposition by overwhelming scores and, whilst we congratulate them on their achievements, we quite naturally hope that their successful run has a temporary halt this afternoon. At the time of these notes going to press the fitness of several Llanelli players is in doubt, including Delme Thomas, who is only just recovering from a bout of 'flu. Their selection was delayed until after training on Thursday, but whatever team eventually takes the field it can be assured of rousing support from the large band of supporters who will be travelling to the Arms Park.

The Cardiff side will be anxious to wipe out the memory of a double defeat at the hands of Llanelli last season and the players know that a tremendous effort will be required to win this game. Changes from last Saturday bring back winger Maurice Richards and centre Ken Jones, who are both pronounced fit. Roy Duggan also returns to the centre, whilst in the pack Lynn Baxter takes over on the rota basis from Ian Robinson. David Rich holds his place at scrum half and showed great promise last Saturday to confirm his excellent performances for the 'Rags'.

If the weather is fine the prospects for today's game are intriguing and one hopes that the excitement and tension of the build-up before the game do not result in an anti-climax. In a needle match of this type, there is sometimes the danger of there being a negative, defensive approach, in which a spirit of caution, born out of fear of mistakes, snuffs out all constructive enterprise. Confidence is an all-important asset in these circumstances and if the Cardiff players convince themselves that they can continue to play as they did in the last fifteen minutes of the game against the Wasps last week, when forwards and threequarters combined together in explosive fashion, then they could well be the victors today. Whichever team wins, and the flavour of a victory is always enhanced by being fiercely partisan on such occasions, let us hope that it wins worthily on merit and in a manner pleasing to the palate of the rugby 'gourmet'.

B.M.

Know the Laws - No. 31

by FRED CROSTER

Law 20. 'Charging, Obstruction, Foul Play and Misconduct'.

Of all the Laws in the book and, as I have said so often there are far too many, this, surely, is the one which is most flagrantly contravened and least understood.

Let me quote :

"It is illegal for: any player who is running for the ball to charge or push an opponent also running for the ball, except *shoulder to shoulder* :

to move outwards at the back of a scrum, to prevent an opponent from coming around:

whilst in an offside position, to run or stand in front of one of his own players to prevent an opponent from getting to him :

to attempt to force his way through the players of his own side, with the ball in his possession, after it has come out from a scrum or a line-out."

The Penalty in each case is a kick at the place of infringement, a penalty try, if the illegal act has prevented a score *or* under Law 33, the offending player, for *repeated infringement will be sent off*.

"Foul play or *any* form of misconduct are prohibited. It is therefore illegal for any player:

who is not himself running for the ball to wilfully charge or obstruct an opponent who has just kicked the ball:

to hold, push, charge or obstruct or grasp an opponent not holding the ball except in a scrum :

to wilfully hack, kick or trip an opponent; or strike him; or tackle him early or late dangerously; or wilfully cause a scrum to collapse:

whilst the ball is out of play, to molest, obstruct or in any way interfere with him or be guilty of any form of misconduct."

The Penalty in each case is for the offending player to be *sent off* or *cautioned that this will happen if he repeats the offence*, plus of course a penalty kick or penalty try. The latter is always *under the posts*. For a similar offence after caution the player *MUST* be sent off.

In *all* cases the referee is the *sole judge of fact* and the disciplinary committee of the W.R.U. will always back him up.

A player sent off can not take part in *any game* until his case has been heard by the disciplinary committee.

The referee's report is sent in without delay. The player's should be also.

SUNDAY EXPRESS

THE BEST FOR CARDIFF RUGBY REPORTS

—WITH A BIG MATCH SPECIAL

EACH WEEK BY

KEN JONES

WELSH HOSPITALS & HEALTH SERVICES ASSOCIATION

OVER FIFTY YEARS OF SERVICE
Founded 1912



Benefits all additional and supplementary to the
National Health Service

CASH GRANTS TO HOSPITAL IN-PATIENTS
£3/10/0 or £7/0/0 per week

Dependent on Marital Status and Rate of
Contribution

PLUS:—An Extra Week's Benefit for Convalescence.

Also valuable and generous benefits for:—

Hospital Out-Patients : Maternity : Convalescent Homes
Optical Appliances : Dentures : Local Authority Home Help
Physiotherapy : Private Specialist Consultation : etc.

SUBSCRIPTION RATES

1/- or 2/- per week 13/- or 26/- per quarter
£2/12/0 or £5/4/0 per Annum

Send for details today from B. Glanville Davies, General Secretary,
Welsh Hospital and Health Services Association, 60 Newport Road,
Cardiff.



Lewis Darbey & Co.

TOBACCONISTS — HAIRDRESSERS
and CONFECTIONERS

BRANCHES IN CARDIFF

84 ST. MARY STREET 100 QUEEN STREET
3 ROYAL BUILDINGS, PARK PLACE
OXFORD HOUSE, THE HAYES
7 MOUNT STUART SQUARE
QUEEN STREET ARCADE
53 WELLFIELD ROAD
Telephone Cardiff 33443

CARDIFF ATHLETIC CLUB DEVELOPMENT FUND

CARDIFF ARMS PARK

CARDIFF

(Registered under the Betting, Gaming and Lotteries Act, 1963)

Promoters: R. F. TROTT and D. G. GRANT

DAILY PRIZES OF £20 £10 & 2 at £5

£240 PER WEEK

Agents and members are still required for the Daily Prize Draw run in conjunction with the Development Fund. The subscription is One Shilling per week only for 24 chances.

Please complete and return this form.

* I wish to become an Agent and shall be obliged if the Organiser can call to see me.

* I wish to become a Member of the draw and shall be obliged if you will advise me of the name and address of your nearest agent.

* I wish to become a Member of the draw for the next fifty-two weeks and enclose my cheque for £2 12s. 0d.

NAME

ADDRESS

*Please delete where necessary

GLAMTAX (CARDIFF) LTD.

ADJOINING THE CARDIFF ARMS PARK

FULL 24 HOUR TAXI SERVICE

Telephone Cardiff 26363

Agents for:

GODFREY DAVIS CAR and VAN RENTAL

**BUILDING & HOME IMPROVEMENT
MATERIALS**

They're All At



BARRY BRIDGEND CARDIFF NEWPORT SWANSEA

We may not be able to interpret new rules — but we can interpret your Central Heating requirements. Give us a try . . . you will find that we are on the ball

D. MORGAN EDWARDS LTD.

Telephone CARDIFF 37338-9

THE HOUSE WARMING CENTRE

17-21 CASTLE ST., CARDIFF

CENTRAL HEATING, KITCHEN and BATHROOM
EQUIPMENT — MERCHANTS TO HEATING and
ALLIED TRADES



Read J.B.G. on
RUGBY
in the

WESTERN MAIL

**OVER THE
BAR**



**Take
Courage**

Cardiff

- 15. D. GETHIN
- 14. M. RICHARDS
- 13. D. K. JONES
- 12. R. DUGGAN
- 11. A. FINLAYSON
- 10. A. D. WILLIAMS
- 9. D. RICH
- 1. C. H. NORRIS (Capt.)
- 2. G. DAVIES
- 3. R. BEARD
- 4. L. BAXTER
- 5. M. BRAITHWAITE
- 6. M. JOHN
- 8. E. WILLIAMS
- 7. J. HICKEY

- Full Back
- Right Wing
- Right Centre
- Left Centre
- Left Wing
- Outside Half
- Inside Half
- Forwards



Referee: C. DURAND (French Rugby Federation)

Llanelli

- C. DAVIES 15.
- A. HILL 14.
- J. THOMAS 13.
- G. ASHBY 12.
- G. GRIFFIN 11.
- P. BENNET 10.
- G. THOMAS 9.
- B. BUTLER 1.
- N. GALE 2.
- B. GALE 3.
- D. QUINNELL 4.
- S. GALLACHER (Capt.) 5.
- C. JOHN 6.
- A. JAMES 8.
- A. JOHN 7.

**MAE
GUINNESS**



**YN DDA
I CHWI**



*Dry Cleaning
Service*

FOR YOUR DRY-CLEANING AND LAUNDRY
'GET IN TOUCH WITH'

Gwyn Nicholls & Winfield

LIMITED

LLANDAFF NORTH

Telephone CARDIFF 72231/2

PROVINCIAL PRINTING

AND PUBLISHING CO. LTD

FERRY ROAD, CARDIFF

Telephone CARDIFF 28729

WEDDING STATIONERY SUPPLIED

WHOLESALE GLASS MERCHANTS
AND GLAZING CONTRACTORS

WELSH GLASS WORKS LTD.

CARDIFF 40224 (4 lines)

SWANSEA 52189

NEWPORT 63117 (2 lines)

MANUFACTURERS OF MIRRORS

Copper-backed by the most modern process

Plate-Glass replacements promptly effected

'Triplex' Safety Glass Products

THE LARGEST STOCKHOLDERS IN WALES

NEXT HOME FIXTURE

CARDIFF

v.

EBBW VALE

SATURDAY, 30th NOVEMBER, 1968 K.O. 3 p.m.

Caerphilly Concrete Products Ltd.

SPECIALISTS IN ALL TYPES OF FENCING

Subsidiary Company

CCP BUILDING & DEMOLITION Co. Ltd.

Head Office:

Old Wernddu Brickworks
WERNDU
CAERPHILLY
Telephone 2304

JOHN CORY (Travel) LTD.

WORLD WIDE TRAVEL

by,

LAND, SEA and AIR

FOR RUGBY EXCURSIONS TO
PARIS, DUBLIN & EDINBURGH

Contact us at :-

Mount Stuart House
CARDIFF
Telephone: 27321

or

at Evan Roberts Ltd.
Kingsway House
CARDIFF
Telephone: 31507

INVEST with the PRINCIPALITY

WALES' largest Building Society

ATTRACTIVE RATES OF INTEREST PAID

ASSETS NOW EXCEED £22,500,00

ALL SHARES AND DEPOSITS ARE TRUSTEE INVESTMENTS

write or call for free brochure

**PRINCIPALITY
BUILDING SOCIETY**
QUEEN STREET CARDIFF
Telephone 42242

Branch Offices: BANGOR BARRY CARMARTHEN COLWYN BAY
HEREFORD LONDON KINGSTON-on-THAMES NEWPORT (Mon.)
SHREWSBURY SWANSEA and many Agents

For your

CLUB
REGIMENTAL
UNIVERSITY

and

OLD-BOYS TIES, BADGES and SCARVES

QUOTATIONS GIVEN FOR YOUR OWN DESIGN

CALDERS

A. CALDER and Sons Limited
98 QUEEN STREET
CARDIFF 31701

THE KINGSWAY
SWANSEA

WYNDHAM STREET
BRIDGEND

**FOR MEN WHO CAN HANDLE
A FISTFUL OF FLAVOUR!**



crystal clear
TANKARD
 the most refreshing
 beer of all

BREWED BY WHITBREAD



FIRST XV FIXTURES

Date	Opponents	Venue	Result
1968			
Sept. 4	Glam. Wanderers	H	27-12
7	Welsh Academicals	H	30-0
11	Bridgend	H	6-11
14	London-Welsh	A	19-8
18	Bristol	H	19-9
21	Coventry	H	3-6
25	Gloucester	A	6-15
28	Aberavon	A	3-6
Oct. 2	Penarth	A	17-0
5	Newport	H	6-11
9	Newbridge	H	16-8
12	Northampton	A	6-6
16	Pontypool	H	35-9
19	Cambridge Univ.	A	10-6
26	Glamorgan Police	H	46-17
Nov. 2	Oxford Univ.	H	9-6
9	Newport	A	6-9
11	Auvergne	A	20-6
16	Wasps	H	20-6
23	Llanelli	H	
30	Ebbw Vale	H	
Dec. 7	Swansea	A	
11	South African Univ.	H	
	(All Pay)		

14	Harlequins	A	
21	Galashiels	H	
26	Liverpool	H	
27	Universities Ath. U.	H	
28	London-Welsh	H	
1969			
Jan. 1	Galashiels	A	
2	Watsonians	A	
11	Coventry	A	
25	Aberavon	H	
Feb. 1	Pontypridd	H	
8	Bristol	A	
15	Newport	H	
22	Llanelli	A	
Mar. 1	Newport	A	
15	Swansea	H	
22	Penarth	H	
29	Headingley	A	
Apr. 5	Barbarians	H	
7	Harlequins	H	
14	Bridgend	A	
19	Liverpool	A	
21	Birkenhead Park	A	
22	Chester	A	
26	Sevens (All Pay)	H	
30	Pontypool	A	

Branches also at: NEWPORT BARGOED
 PONTYPOOL BARRY DOCK TREDEGAR
 PONTYPRIDD EBBW VALE and
 PORT TALBOT

We hope the match is a good one
 for 'good points' do interest us both
 — and after the match you'll see
 many in the furniture on show at
 the Roath

the
ROATH
 furnishing co.

42 CITY ROAD CARDIFF

Telephone CARDIFF 30421

Member of Victoria Club, London
 National Sporting League, London

For All That is Best in Racing . . .

JACK WILLIAMS

TURF ACCOUNTANT

LINCOLNSHIRE HOUSE, LANSDOWNE ROAD
 CARDIFF, CF1 1NT
 Cardiff 29763 (all lines)

LETTER BETTING A SPECIALITY (Free Postage)

GENUINE "NO LIMIT" TERMS TO ACCOUNT CLIENTS

PAYMENT ON THE 4th HORSE IN ALL HANDICAPS OF 20
 OR MORE RUNNERS



RUGBY
 INTERNATIONAL
 SCOTLAND v. WALES

SATURDAY, 1 FEBRUARY, 1969

'Specials' to
 EDINBURGH from Cardiff,
 Rhondda, Merthyr and
 Rhymney Valley Stations

Party Organisers write now for full
 details to the — Divisional Manager,
 Marland House, Central Square, Cardiff



British Rail

WELSH BREWERS
 LIMITED

supply

HANCOCKS

and

M. & B.

to the

ATHLETIC CLUB

WALES' LEADING SPORTS SUPPLIERS



SEER SPORTS

LIMITED

56 COWBRIDGE ROAD EAST
68 CASTLE STREET, CAERPHILLY

Tel: 24880
Tel: 3433

SOLE SUPPLIERS OF SPORTS EQUIPMENT TO
CARDIFF RUGBY CLUB

SEE OUR FABULOUS NEW 'SEER LUXE' RUGBY JERSEYS AS WORN
BY THE LEADING CLUBS — SEND NOW FOR FREE BROCHURES

Special Discounts to Clubs

RED & WHITE SERVICES LTD.

TOURS and EXCURSIONS
EXPRESS SERVICES
LOCAL SERVICES
PRIVATE HIRE

Specialists in
Luxury Coach Travel

Head Office:
BULWARK, CHEPSTOW
Mon.

Telephone: 2326/7/8

Local Office:
CENTRAL BUS STATION
WOOD STREET
CARDIFF

Telephone: 37939

JOHN MORGAN (BUILDERS) LIMITED

Building and Civil
Engineering Contractors
Reinforced Concrete
and Piling Specialists

Contractor to
H. M. Government

Registered Offices:
387 NEWPORT ROAD
CARDIFF

Telegrams:
"Jaymorgan"
Telephones:
42651 (10 lines)