

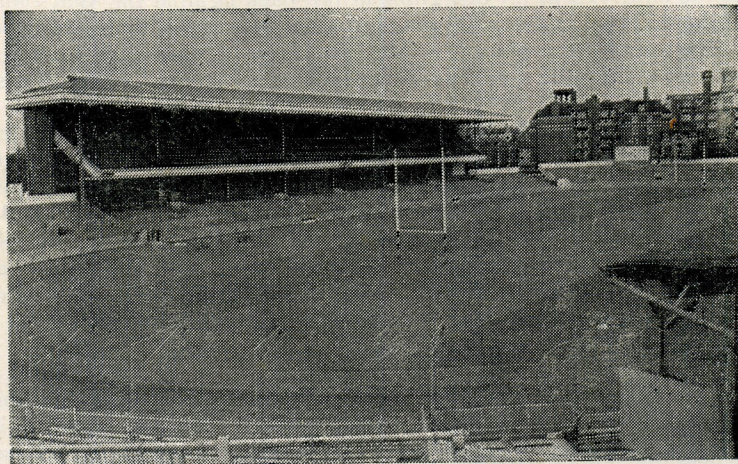
CARDIFF RUGBY CLUB

SEASON 1968 - 1969



**CARDIFF
ARMS PARK**

CARDIFF v. PONTYPRIDD



SATURDAY, 1st FEBRUARY, 1969

KICK OFF 11.30 A.M.

OFFICIAL PROGRAMME

PRICE SIXPENCE

PROVINCIAL PRINTING AND PUBLISHING CO., LTD., FERRY ROAD, CARDIFF

Cardiff v. Pontypridd

We welcome Pontypridd for this morning's game, the timing of which may not please some diehards, but really is a sensible arrangement when considered in the light of the television age in which we live. The influence of the televising of live international matches is vast and many clubs have to make similar arrangements in order to live with this medium. At the same time it must be realised that the small screen is an excellent advertisement for the game of rugby football, if the games seen are of sufficiently high quality. There is a wealth of discussion involved in those remarks, but suffice to say that if properly handled the televising of rugby matches can be a tremendous boon for the game.

The Cardiff selectors make quite a few changes for today's match and although three men (excluding Gerald Davies) are on duty at Murrayfield, they have still taken the opportunity of resting three other regular first team players. Full-back Denis Gethin, who has missed only one match this season and has scored 160 points, is replaced by John Evans, whose previous first-team appearances have mainly been at outside-half, except for one game at full-back against the Watsonians in Scotland. Hooker Gary Davies and prop forward Roger Beard both stand down and are replaced by Meirion Davies and British Lion John O'Shea, who, since the tour, has played most of his rugby for the 'Rags'.

Re-appearing on the wing for the first-time since October is John Huw Williams, as Alex Finlayson is travelling to Edinburgh to watch the international match. Another absentee is Billy Hullin who is ill with a chest complaint, so Gary Samuel comes in at scrum-half. To complete the musical chairs Tony Williams switches to outside-half and Roy Duggan replaces him in the centre. The middle and back rows of the pack remain the same. Lynn Baxter, who has been missing since early December with damaged neck and shoulder muscles tests his fitness by playing for the Extras at Cefn Coed.

In the Pontypridd side Robert Small plays his first game for them at outside-half; he is an art student from Coventry and has been playing well for the reserves in recent weeks. Two long-serving players have regained their fitness in time for today's game. They are centre Joe Smith, who is a former Cardiff player, and second row forward Bob Penberthy who has been out for a couple of months with a broken bone in his foot.

B.M.

Purchase of Debentures by Club Members on Deferred Terms

With the help of the Club's Bankers, it is possible to assist a limited number of members to obtain ONE £50 debenture on deferred terms:—

1. We will procure a debenture for any member who makes a down payment of £10 and agrees to repay the balance over a term not exceeding twelve months.
2. If the full £50 is paid within three months, a charge of £1 will be made to cover bank interest and the transfer cost involved. If the period does not exceed six months, then the charge will be £2, for a nine months term the charge will be £3, and if the full twelve months is taken the charge will be £4.
3. Club members who wish to avail themselves of this opportunity will sign an agreement.
4. The debentures will be held by the Trustees of the Cardiff Athletic Club until such time as the full purchase sum and charges have been paid. When this has been done the debenture will be assigned to the member concerned, but if the purchase is not completed within the due time, i.e., twelve months, then the Cardiff Athletic Club shall be entitled to sell the debenture and recover the balance due, including interest.

Members should apply to the Club Office for the necessary form. When the limit has been reached this offer will be closed.

General Secretary.

SUNDAY EXPRESS

THE BEST FOR CARDIFF RUGBY REPORTS

—WITH A BIG MATCH SPECIAL

EACH WEEK BY

KEN JONES

WELSH HOSPITALS & HEALTH SERVICES ASSOCIATION

OVER FIFTY YEARS OF SERVICE
Founded 1912



Benefits all additional and supplementary to the
National Health Service
CASH GRANTS TO HOSPITAL IN-PATIENTS
£3/10/0 or £7/0/0 per week
Dependent on Marital Status and Rate of
Contribution

PLUS:—An Extra Week's Benefit for Convalescence.

Also valuable and generous benefits for:—

Hospital Out-Patients : Maternity : Convalescent Homes
Optical Appliances : Dentures : Local Authority Home Help
Physiotherapy : Private Specialist Consultation : etc.

SUBSCRIPTION RATES

1/- or 2/- per week 13/- or 26/- per quarter
£2/12/0 or £5/4/0 per Annum

Send for details today from B. Glanville Davies, General Secretary,
Welsh Hospital and Health Services Association, 60 Newport Road,
Cardiff.

Lewis Darbey & Co.

TOBACCONISTS — HAIRDRESSERS
and CONFECTIONERS

BRANCHES IN CARDIFF

84 ST. MARY STREET 100 QUEEN STREET
3 ROYAL BUILDINGS, PARK PLACE
OXFORD HOUSE, THE HAYES
7 MOUNT STUART SQUARE
QUEEN STREET ARCADE
53 WELLFIELD ROAD
Telephone Cardiff 33443



CARDIFF ATHLETIC CLUB DEVELOPMENT FUND

CARDIFF ARMS PARK

CARDIFF

(Registered under the Betting, Gaming and Lotteries Act, 1963)

Promoters: R. F. TROTT and D. G. GRANT

DAILY PRIZES OF £20 £10 & 2 at £5

£240 PER WEEK

Agents and members are still required for the Daily Prize Draw run in conjunction with the Development Fund. The subscription is One Shilling per week only for 24 chances.

Please complete and return this form.

* I wish to become an Agent and shall be obliged if the Organiser can call to see me.

* I wish to become a Member of the draw and shall be obliged if you will advise me of the name and address of your nearest agent.

* I wish to become a Member of the draw for the next fifty-two weeks and enclose my cheque for £2 12s. 0d.

NAME

ADDRESS

*Please delete where necessary

GLAMTAX (CARDIFF) LTD.

ADJOINING THE CARDIFF ARMS PARK

FULL 24 HOUR TAXI SERVICE

Telephone Cardiff 26363

Agents for:

GODFREY DAVIS CAR and VAN RENTAL

BUILDING & HOME IMPROVEMENT
MATERIALS

They're All At



BARRY BRIDGEND CARDIFF NEWPORT SWANSEA

We may not be able to interpret new rules — but we can interpret your Central Heating requirements. Give us a try . . . you will find that we are on the ball

D. MORGAN EDWARDS LTD.

Telephone CARDIFF 37338-9

THE HOUSE WARMING CENTRE

17-21 CASTLE ST., CARDIFF

CENTRAL HEATING, KITCHEN and BATHROOM
EQUIPMENT — MERCHANTS to HEATING and
ALLIED TRADES



Read J.B.G. on
RUGBY
in the



WESTERN MAIL

**OVER THE
BAR**



**Take
Courage**

Cardiff

15. J. EVANS
14. J. H. WILLIAMS
13. R. DUGGAN
12. D. K. JONES
11. B. COLES
10. A. D. WILLIAMS
9. G. SAMUEL
1. C. H. NORRIS (Capt.)
2. M. DAVIES
3. J. P. O'SHEA
4. M. BRAITHWAITE
5. I. ROBINSON
6. E. WILLIAMS
8. A. R. PENDER
7. J. HICKEY

- Full Back
Right Wing
Right Centre
Left Centre
Left Wing
Outside Half
Inside Half
Forwards



Referee: H. G. EVANS (Cwmllynfell)

Pontypridd

- R. HOPE 15.
- G. REES 14.
- J. SMITH 13.
- G. THOMAS 12.
- W. DAVIES 11.
- R. SMALL 10.
- D. JOHN 9.
- B. DAVEY 1.
- A. JONES (Capt.) 2.
- W. EVANS 3.
- B. PENBERTHY 4.
- R. JONES 5.
- J. ROWSELL 6.
- T. DAVID 8.
- D. EDWARDS 7.

MAE

GUINNESS



YN DDA
I CHWI



*Dry Cleaning
Service*

FOR YOUR DRY-CLEANING AND LAUNDRY
'GET IN TOUCH WITH'

Gwyn Nicholls & Winfield

LIMITED

LLANDAFF NORTH

Telephone CARDIFF 72231/2

PROVINCIAL PRINTING

AND PUBLISHING CO. LTD

FERRY ROAD, CARDIFF

Telephone CARDIFF 28729

WEDDING STATIONERY SUPPLIED

WHOLESALE GLASS MERCHANTS
AND GLAZING CONTRACTORS

WELSH GLASS WORKS LTD.

CARDIFF 40224 (4 lines) SWANSEA 52189

NEWPORT 63117 (2 lines)

MANUFACTURERS OF MIRRORS

Copper-backed by the most modern process.

Plate-Glass replacements promptly effected

'Triplex' Safety Glass Products

THE LARGEST STOCKHOLDERS IN WALES

NEXT 1st XV HOME MATCH

CARDIFF

v.

NEWPORT

SATURDAY, 15th FEBRUARY, 1969 K.O. 3 p.m.

Caerphilly Concrete Products Ltd.

SPECIALISTS IN ALL TYPES OF FENCING

Subsidiary Company

CCP BUILDING & DEMOLITION Co. Ltd.

Head Office:

Old Wernddu Brickworks
WERNDDU
CAERPHILLY
Telephone 2304

JOHN CORY (Travel) LTD.

WORLD WIDE TRAVEL

by,

LAND, SEA and AIR

FOR RUGBY EXCURSIONS TO
PARIS, DUBLIN & EDINBURGH

Contact us at :-

Mount Stuart House
CARDIFF
Telephone: 27321

or

at Evan Roberts Ltd.
Kingsway House
CARDIFF
Telephone: 31507

INVEST with the PRINCIPALITY

WALES' largest Building Society

ATTRACTIVE RATES OF INTEREST PAID

ASSETS NOW EXCEED £28,000,000

ALL SHARES AND DEPOSITS ARE TRUSTEE INVESTMENTS

write or call for free brochure

**PRINCIPALITY
BUILDING SOCIETY**
QUEEN STREET CARDIFF
Telephone 42242

Branch Offices: BANGOR BARRY CARMARTHEN COLWYN BAY
HEREFORD BRIDGEND KINGSTON-on-THAMES NEWPORT (Mon.)
PWLLHELI SHREWSBURY SWANSEA and many Agents

For your

CLUB

REGIMENTAL

UNIVERSITY

and

OLD-BOYS TIES, BADGES and SCARVES

QUOTATIONS GIVEN FOR YOUR OWN DESIGN

CALDERS

A. CALDER and Sons Limited

98 QUEEN STREET

CARDIFF 31701

THE KINGSWAY
SWANSEA

WYNDHAM STREET
BRIDGEND

FOR MEN WHO CAN HANDLE A FISTFUL OF FLAVOUR!



crystal clear
TANKARD
 the most refreshing
 beer of all

BREWED BY WHITBREAD



FIRST XV FIXTURES

Date	Opponents	Venue	Result
1968			
Sept. 4	Glam. Wanderers	H	27-12
7	Welsh Academicals	H	30-0
11	Bridgend	H	6-11
14	London-Welsh	A	19-8
18	Bristol	H	19-9
21	Coventry	H	3-6
25	Gloucester	A	6-15
28	Aberavon	A	3-6
Oct. 2	Penarth	A	17-0
5	Newport	H	6-11
9	Newbridge	H	16-8
12	Northampton	A	6-6
16	Pontypool	H	35-9
19	Cambridge Univ.	A	10-6
26	Glamorgan Police	H	46-17
Nov. 2	Oxford Univ.	H	9-6
9	Newport	A	6-9
11	Auvergne	A	20-6
16	Wasps	H	20-6
23	Llanelli	H	9-3
30	Ebbw Vale	H	6-6
Dec. 7	Swansea	A	3-6
11	South African Univ.	H	11-6 (All Pay)

14	Harlequins	A	C
21	Galashiels	H	25-3
26	Liverpool	H	12-5
27	Universities Ath.	U.	H C
28	London-Welsh	H	9-5
1969			
Jan. 1	Galashiels	A	9-6
2	Watsonians	A	20-3
11	Coventry	A	11-14
25	Aberavon	H	13-6
Feb. 1	Pontypridd	H
8	Bristol	A
15	Newport	H
22	Llanelli	A
Mar. 1	Newport	A
15	Swansea	H
22	Penarth	H
29	Headingley	A
Apr. 5	Barbarians	H
7	Harlequins	H
14	Bridgend	A
19	Liverpool	A
21	Birkenhead Park	A
22	Chester	A
26	Sevens (All Pay)	H
30	Pontypool	A

Branches also at: NEWPORT BARGOED
 PONTYPOOL BARRY DOCK TREDEGAR
 PONTYPRIDD EBBW VALE and
 PORT TALBOT

We hope the match is a good one
 for 'good points' do interest us both
 — and after the match you'll see
 many in the furniture on show at
 the Roath

the
ROATH
 furnishing co.

42 CITY ROAD CARDIFF
 Telephone CARDIFF 30421

Member of Victoria Club, London
 National Sporting League, London

For All That is Best in Racing . . .

JACK WILLIAMS

TURF ACCOUNTANT

LINCOLNSHIRE HOUSE, LANSDOWNE ROAD
 CARDIFF, CFI 1NT
 Cardiff 29763 (all lines)

LETTER BETTING A SPECIALITY (Free Postage)

GENUINE "NO LIMIT" TERMS TO ACCOUNT CLIENTS

PAYMENT ON THE 4th HORSE IN ALL HANDICAPS OF 20
 OR MORE RUNNERS



RUGBY
 INTERNATIONAL

SCOTLAND v. WALES

SATURDAY, 1 FEBRUARY, 1969

'Specials' to
 EDINBURGH from Cardiff,
 Rhondda, Merthyr and
 Rhymney Valley Stations

Party Organisers write now for full
 details to the — Divisional Manager,
 Marland House, Central Square, Cardiff



British Rail

WELSH BREWERS
 LIMITED

supply

HANCOCKS

and

M. & B.

to the

ATHLETIC CLUB

WALES' LEADING SPORTS SUPPLIERS



SEER SPORTS

LIMITED

56 COWBRIDGE ROAD EAST
68 CASTLE STREET, CAERPHILLY

Tel: 24880
Tel: 3433

.....
SOLE SUPPLIERS OF SPORTS EQUIPMENT TO
CARDIFF RUGBY CLUB
.....

SEE OUR FABULOUS NEW 'SEER LUXE' RUGBY JERSEYS AS WORN
BY THE LEADING CLUBS — SEND NOW FOR FREE BROCHURES

Special Discounts to Clubs

RED & WHITE SERVICES LTD.

TOURS and EXCURSIONS
EXPRESS SERVICES
LOCAL SERVICES
PRIVATE HIRE

Specialists in
Luxury Coach Travel

Head Office:
BULWARK, CHEPSTOW
Mon.

Telephone: 2326/7/8

Local Office:
CENTRAL BUS STATION
WOOD STREET
CARDIFF

Telephone: 37939

JOHN MORGAN (BUILDERS) LIMITED

Building and Civil
Engineering Contractors
Reinforced Concrete
and Piling Specialists

Contractor to
H. M. Government

Registered Offices:
387 NEWPORT ROAD
CARDIFF

Telegrams:
"Jaymorgan"
Telephones:
42651 (10 lines)