

**Bridgend Rugby
Football Club, Brewery Field**

Bridgend

Cardiff

Wednesday, 2nd April, 1986. Kick-off 7.15 p.m.

PROGRAMME
25p

Insulation Products
Rockwool

Rockwool manufacture a complete range of Thermal, Fire and Acoustic Insulation Products for Domestic and Industrial Buildings and Plant.

For further information please contact:

Insulation Products
Rockwool

Pencoed · Bridgend
Mid Glamorgan CF35 6NY
Telephone: 0656 · 862621

THE CHRISTOPHER PULLMAN FUND

Some months ago, 15-year old Christopher Pullman a pupil at Brynteg Comprehensive School was very badly injured in a car accident and has been hospitalised ever since. He will now need very costly special equipment to help in his disability. In aid of his Appeal Fund, Bryntirion Athletic A.F.C. will play a Welsh "All Star" International XI at the South Wales Police Waterton ground on Sunday, 13th April. Kick-off at 3.15 p.m. The star rugby players named to take part include MARK TITLEY, RAY GILES, GARETH EDWARDS, GARETH WILLIAMS, GERALD WILLIAMS, IAN STEPHENS, IAN HALL, J. J. WILLIAMS, BLEDDYN BOWEN, ROBERT JONES, MALCOLM DACEY and JONATHAN DAVIES. The referee will be Mr. CLIVE THOMAS. There will be pre-match and half-time entertainment by the Bridgend KYOKUSHINKAI Karate Club and the Bridgend Legionaires Jazz Band as well as other attractions for children during the afternoon.

Members of Bryntirion Athletic R.F.C., who have made all the arrangements for this match, will be at the Brewery Field today to sell programmes for the event — only 50p. We feel sure you will give your very generous support to this most worthy cause, and we express our very best wishes to Christopher who has shown great courage and determination throughout his tremendous ordeal.

SCHWEPPE'S CUP FINAL

To: The Secretary, Welsh Rugby Union, PO Box 22, Cardiff. CF1 1JL.

Please supply me with tickets for the Schweppes Challenge Cup Final to be held at the National Ground, Cardiff Arms Park on Saturday, 29th April, 1986.

..... North Upper Stand	@ £5.00
..... North Upper Stand (Wings)	@ £3.50
..... North Lower Stand	@ £5.00
..... South Stand	@ £5.00
..... South Stand (Wings)	@ £3.50
..... West Stand	@ £3.50
..... South Enclosure	@ £2.00
..... East Terrace	@ £2.00
..... West Enclosure	@ £2.00
..... Juveniles' Enclosure (Under 15)	@ £1.00

I agree to accept alternative tickets should my first choice not be available.

Name _____ Address _____

Remittance Enclosed £ _____

**GROUND MAINTENANCE, FENCING
AND
GARDENING CONTRACTOR
W. R. DAVID & SONS**

**TORGELLY FARM
LLANHARRY
Tel: 0443/223711**

Contractors to Bridgend R.F.C.

BRIDGEND RAVENS FIXTURE LIST — SEASON 1985/86

1985

Mon.	Sept. 2	Nantyffyllon	A	13-4
Sat.	7	Porthcawl	A	19-13
Sat.	14	Tonyrefail	H	21-14
Sat.	21	Carmarthen Athletic	A	13-9
Wed.	25	Pontycymmer	H	59-10
Sat.	28	Kenfig Hill	H	15-9
Wed.	Oct. 2	Aberavon Quins	A	10-15
Sat.	5	Cardiff H.S.O.B.	A	27-13
Wed.	9	22nd Air Defence Regiment	H	45-0
Sat.	12	Llanharran	A	0-21
Sat.	19	Cefn Cribbwr	H	50-0
Sat.	26	Maesteg Celtic	A	35-12
Wed.	30	Pyle	A	10-20
Sat.	Nov. 2	Pontyclun	H	52-0
Sat.	9	Neath Athletic	H	13-12
Sat.	16	Pontycymmer	A	22-6
Sat.	23	Bryncethin	A	42-6
Sat.	30	Llantrisant	A	30-23
Sat.	Dec. 7	Pill Harriers	H	32-0
Wed.	11	Llantwit Major	H	17-11
Sat.	14	Heol-y-cyw	A	19-13
Sat.	21	Swansea Athletic	A	32-0

1986

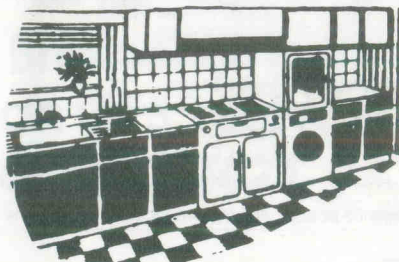
Wed.	Jan. 1	Bryncethin	H	22-4
Wed.	8	Bedwas	H	20-15
Sat.	11	Pontyclun	A	4-3
Wed.	15	Blaengarw	H	52-0
Sat.	25	Treorchy	A	8-17
Wed.	29	Heol-y-Cyw	H	23-4
Sat.	22	Bedwas	A	10-3
Sat.	Mar. 5	Cowbridge	H	28-3
Sat.	8	Abercarn	H	15-13
Sat.	15	Caeleon	A	20-15
Sat.	22	Gowerton	H	14-6
Mon.	24	Porthcawl	H	17-7
Sat.	29	Cefn Cribbwr	A	
Wed.	Apr. 2	Llanharran	H	
Sat.	5	Pyle	H	
Wed.	9	Kenfig Hill	A	
Sat.	12	Llanelli Wanderers	A	
Sat.	19	Cardiff Ints.	H	
Wed.	23	Cwmavon	H	
Sat.	26	Neath Athletic	A	
Wed.	30	Nantyffyllon	H	

**BD BERNARD DAVIES
(BUILDERS' MERCHANTS) LTD.**

Craiglands, Bryncethin, Nr. Bridgend, Mid Glamorgan
Telephone: ABERKENFIG 720279, 720308 & 721333

**EXTENSIVE STOCKS OF ALL
BUILDING MATERIALS AND
TOOLS**

Main Stockists of:
KITCHEN UNITS
BATHROOM SUITES
TILE SURROUNDS
REFORMITE STONE AND
FOREST OF DEAN NATURAL
STONE



Mid Glamorgan's Leading Builders' Merchant

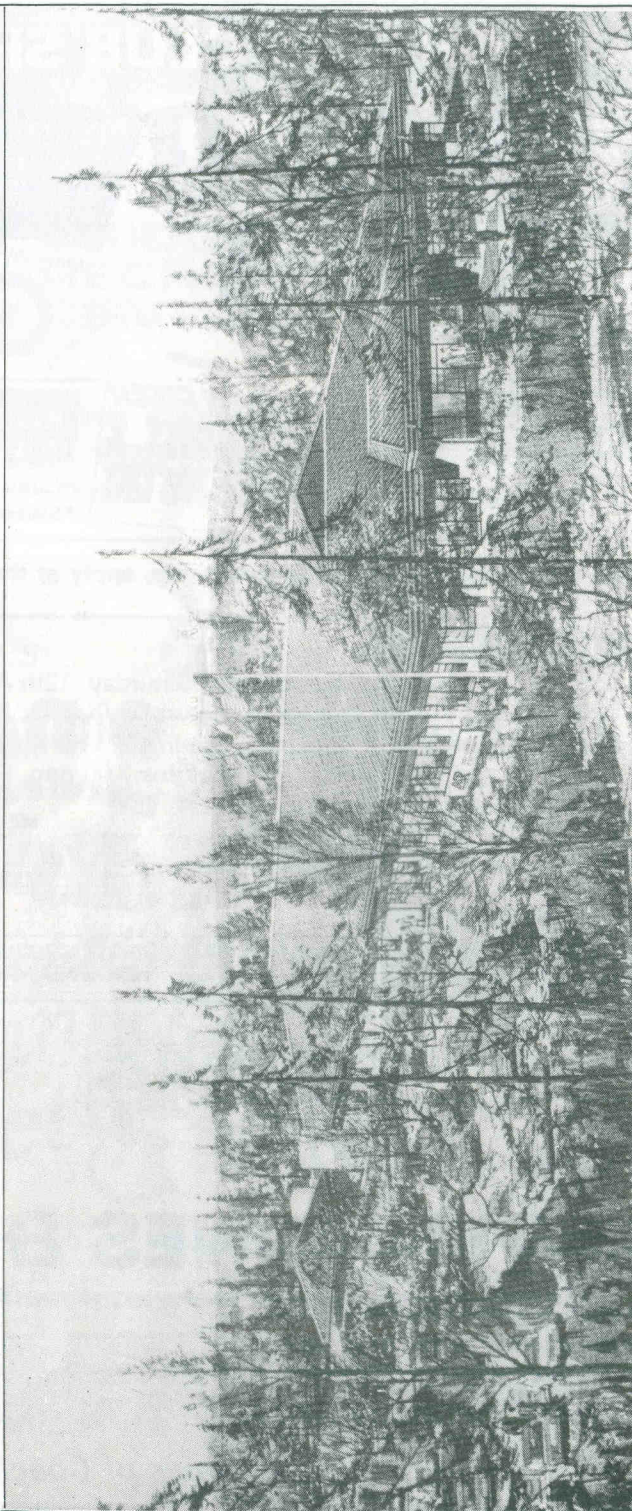


ALIGN-RITE LIMITED

bringing

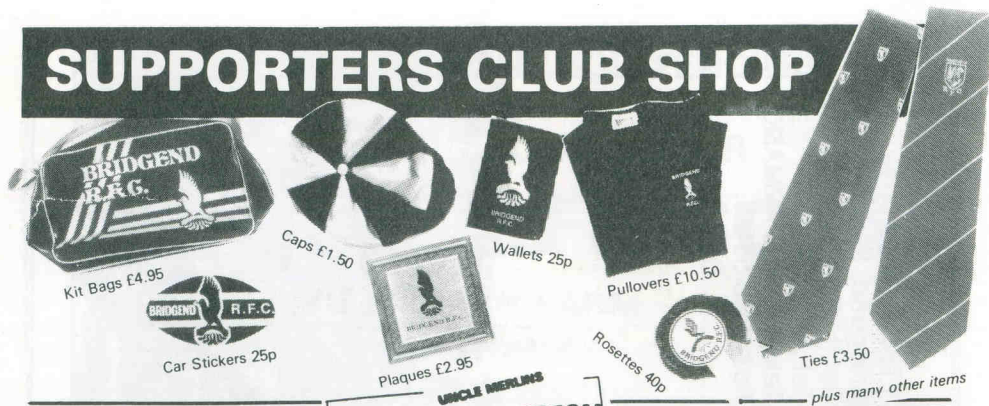
High Technology Jobs to Wales

1 Technology Drive,
Bridgend, Mid Glamorgan,
South Wales. CF31 3LU.
Tel: 0656 62171.
Telex: 498566 ARMASK.
Fax: 0656 56183.



Align-Rite Limited, High Technology Science Park, Bridgend.

SUPPORTERS CLUB SHOP



Kit Bags £4.95

Caps £1.50

Wallets 25p

Pullovers £10.50

Ties £3.50

Car Stickers 25p

Plaques £2.95

Rosettes 40p

plus many other items

CAFETERIA (TAKE AWAY)

- *Toasties *Tea
- *Soup *Meat Pies



Kiddies Tuck Shop

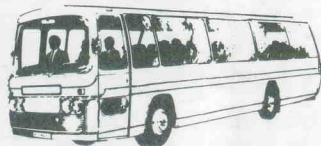
- *Mars *Kit Kat
- *Curly Wurly *Chocolates
- *Sweets *Drinks

For 400 Club Information and Membership, apply at the Shop

TRANSPORT NEWS

Cross Keys. Saturday, 12th April. Coach leaves 1.30 p.m. Returns 6.00 p.m. Fare £2.30.
Moseley. Saturday, 19th April. Coach leaves 9.00 a.m. Returns 7.00 p.m. Fare £6.00.

BRIDGEND R.F.C. SUPPORTERS CLUB
Member of the Association of Welsh Rugby Supporters Clubs.



GWYN JONES & SON

Whitecroft Garage,
Bryncethin,
Nr. Bridgend.
Telephone: 720300/720182.

Consult us for all types of Coach Hire.



**BRIDGEND
RECREATION
CENTRE**

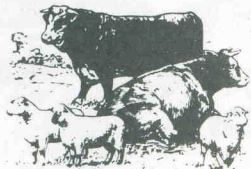
THE CENTRE OFFERS EXCELLENT
FACILITIES FOR A VERY WIDE RANGE
OF ACTIVITIES AND FUNCTIONS.

lectures
drama **SPORT**
film shows **DISPLAYS**
EXHIBITIONS
Receptions *fashion shows*
dinner-dances *concerts*
meetings *competitions*
CONCERTS

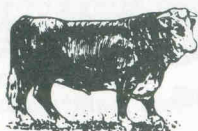
For further information ☎ Bridgend 57481

PETER WOOD

HIGH CLASS FAMILY BUTCHER
STALL 2 THE NEW MARKET
Tel: 56985 BRIDGEND



DEEP FREEZE ORDERS SUPPLIED
 and promptly attended to



Deliveries Daily of
 Local BEEF, LAMB
 AND PORK
 From Farms in
 THE VALE OF
 GLAMORGAN

Official Suppliers to BRIDGEND RFC

Tonight's Teams and Programme Notes by W. A. D. Lawrie

This evening we extend a very warm welcome, to Schweppes Cup finalists CARDIFF, who take on NEWPORT in yet another final at the Arms Park National Ground on Saturday, 26th April. Tonight's game was originally scheduled for 28th December, but was frozen off. Despite their taxing commitments between now and the end of the season we are very grateful to the Cardiff club for agreeing to come to the Brewery Field this evening as they are one of the biggest crowd-pullers in any season.

We had hoped to have seen GARETH DAVIES make what would have probably been his final appearance at the Brewery Field, but take this opportunity of recording everyone's appreciation of his wonderful service over the years at club and national level, and to wish him every success in his future career.

Scrum half DAVID WRIGHT makes his debut for Cardiff, who keep only six of the players who appeared against the Barbarians on Saturday

BRIDGEND

Colours: Blue and White

15 David THOMAS	Full Back
14 Glen WEBBE	Right Wing
13 John APSEE	Right Centre
12 Stuart PARFITT	Left Centre
11 Guy EVANS	Left Wing
10 Geraint JOHN	Stand-off
9 Chris HUTCHINGS	Scrum-half
1 Ian STEPHENS (Capt.)*	Loose-head
2 Wayne HALL	Hooker
3 Paul EDWARDS	Tight-head
4 Adrian OWEN	Lock
5 Martin LEWIS	Lock
6 Chris O'CALLAGHAN	Left Flanker
8 David ARTHUR	No. 8
7 Gareth WILLIAMS*	Right Flanker

*International

Replacements:

Huw Lewis, Ceri Connolly.

Reserves: Chris Bradshaw, Steve Grabham, Richard Evans, Simon Apsee.

Referee— Mr. J. GRENVILLE MORGAN (Pontyclun) W.R.U.

CARDIFF

Colours: Cambridge Blue and Black

15 Paul REES	Full Back
14 Alun GLASSON	Right Wing
13 Alan DONOVAN (Capt.)*	Right Centre
12 Chris WEBBER	Left Centre
11 Gerald CORDLE	Left Wing
10 David EVANS	Stand-off
9 David WRIGHT	Scrum-half
1 Steve BLACKMORE	Loose-head
2 Lawrence O'BRIEN	Hooker
3 Jeff WHITEFOOT*	Tight-head
4 Kevin EDWARDS	Lock
5 Mark ROWLEY	Lock
6 Matthew HADLEY	Left Flanker
8 Terry CHARLES	No. 8
7 Tim CROTHERS	Right Flanker

*International

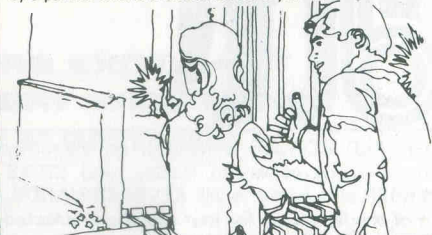
Replacements:

D. Gibbon, I. Greenslade.

A complete Property Service caring for people and property — you will find our handling is impeccable, our service unbeatable and our pace, very quick indeed.

Payton Jewell & Caines

Chartered Surveyors, Valuers and Estate Agents.
10 Dunraven Place, Bridgend. Tel: 4328
 Every Sale, Valuation, Report, Survey is handled personally by a partner who is a Chartered Surveyor.



last. Cardiff senior select C. D. Williams says — "We have the Cup Final in mind and we want to bring in other players who are important members of our squad".

Wright, who joined from Newbridge, earns promotion following a number of highly-promising displays with the second side and partners DAVID EVANS, moving from the centre to deputise for Gareth Davies. Evans has been converted from his customary role of fly half to occupy a centre spot with considerable success and played in that position in the last three games.

Another taking a rest is full back MICHAEL RAYER, who has figured in 23 of the past 26 games. PAUL REES, whose last appearance in the first team was against the Fijians in October, is fully recovered and returns after testing his match fitness for the Athletic XV. ALUN GLASSON, who must have enhanced his claims for a tour place next month when Wales send their senior squad to the South Pacific and the 'B' squad to Italy, stays on the wing.

GARETH L. EDWARDS

Estate Agent & Valuer

- For Personal Service
- Treble Fronted Display Showroom
- Open 7 Days Per Week
- Unrivalled Mortgage Facilities
- Local Agent for Abbey National Building Society (at both offices)
- Fellow National Association of Estate Agents

Contact: G. L. Edwards, F.N.A.E.A., Estate Agent & Valuer,
 4-6 Dunraven Place, Bridgend. Tel: 3274/2710/4253.
 3-5 Hendre Road, Pencoed. Tel: 864033

INTERNATIONAL RUGBY

TOURS FOR WELSH RUGBY SUPPORTERS

WALES
 VERSUS
IRELAND

GO FREE
 ONE FREE WITH
 20 PAYING
 PERSONS

FRANCE

PARC DES PRINCES, PARIS

SCOTLAND

MURRAYFIELD EDINBURGH

Brochure From

COUSINS TRAVEL

26 ALBANY ROAD, CARDIFF
 TEL: 0222-492418



For the best in Fitted
Carpets and Furniture
you can't beat

don lewis
(Carpets and Furniture) Ltd.

74-76 Nolton Street, Bridgend
Telephone 57682

GERALD CORDLE is recalled on the other wing in place of Adrian Hadley, and CHRIS WEBBER also gets a recall. KEVIN EDWARDS, out of the first team for four months is selected alongside MARK ROWLEY, while wing forward MATTHEW HADLEY, captain of the Athletic, makes his first senior team appearance for two years. TERRY CHARLES is chosen at No. 8 for his fifth game of the season with STEVE BLACKMORE and LAWRENCE O'BRIEN coming into the front row.

For BRIDGEND there are eight changes from the side narrowly defeated at Pontypridd on Easter Monday. DAVID THOMAS comes in at full back for Chris Bradshaw, GLEN WEBBE for Jeff Lynn and JOHN APSEE for Steve Grabham. CHRIS HUTCHINGS came on as a replacement at Pontypridd and is retained at scrum-half. In the pack IAN STEPHENS returns for Gareth Hiscocks, WAYNE HALL for Ceri Connolly,

CHRIS O'CALLAGHAN for Simon Apsee and DAVID ARTHUR for Neil Parsons, at No. 8.

SUPPORTERS CLUB AWARDS FOR 1985/86

Player of the Year—GLEN WEBBE — 28 tries to date in 1985/86 and 134 from 169 appearances.

Most Improved Player—STUART PARFITT, a member of the Welsh Schools Grand Slam side in 1984 and now in the Welsh Under 20's squad.

Eric Watts Achievement Trophy—JOHN APSEE who has fought back after sustaining severe burns in an accident 16 months ago.

Special awards to three long-serving ex-Bridgend locks — LYN DAVIES (265), BILLY HOWE (259) and ROY EVANS (247).

REMAINING HOME GAMES

April — Wednesday 14th — PENARTH;
Wednesday 30th — SWANSEA. Efforts being made to re-arrange home game with GLAMORGAN WANDERERS.



**UMBRO MAKES ALL
THE DIFFERENCE—
ON AND OFF THE FIELD.**

UMBRO. OFFICIAL
SPORTSWEAR SUPPLIERS
TO BRIDGEND R.F.C.
AND A HOST OF OTHER
TOP CLUBS AND TEAMS.



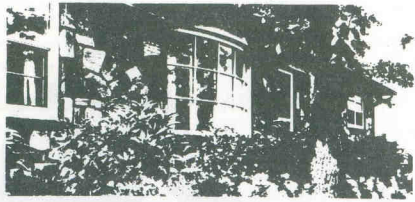
Makes all the difference!



**THE CENTRE OFFERS EXCELLENT
FACILITIES FOR A VERY WIDE RANGE
OF ACTIVITIES AND FUNCTIONS.**

lectures
drama
film shows
exhibitions
Receptions
dinner-dances
meetings
concerts
sport
fashion shows
tournaments

For further information 2 Bridgend 57491



BRIDGEND GLAZING AND SILVERING Co. Ltd.

BRACKLA INDUSTRIAL ESTATE. Tel: 3003

For New Glazing and Window Repairs
Pictures and Mirrors Framed, Glass cut
to Size and delivered

Playing Record (Up to and including Maesteg 29/3/86).

Overall— Played 37, Won 24, Lost 13. Points for 752, Against 515.

Western Mail Championship Table—
Played 30, Won 18, Lost 12. Points for 493,
Against 466.

Bridgend Ravens— Played 35, Won 31, Lost 4.
Points for 841, Against 310.

Bridgend Athletic narrowly failed by 7 points to 3 to reach the Final of the Welsh Brewers Cup in the semi-final at Newport against the Cardiff C.I.A.C.S. At 3 points all and with only 5 minutes to go, the C.I.A.C.S. snatched the vital try after the Athletic had dominated the game throughout but could not just cross their opponents line. But a gallant effort to reach the semi-final, and it now remains to be seen whether the Ravens can reverse the decision when the Cardiff side comes to the Brewery Field on the 19th April.

The following are some of the games which have been re-arranged by the Club following the announcement that the season has been extended up to and including Wednesday, 7th May. Wednesday, 23rd April— Aberavon (Away), Wednesday 30th— Swansea (Home), Wednesday, 7th May— Ebbw Vale (Away). The West Country Tour includes games against Camborne, St. Ives and Brixham on the 1st, 2nd and 3rd May.

The dates for the Club's 35th Sevens Tournament have now been confirmed as Monday, 5th May— Junior Section; Thursday, 8th May— Open Section and Saturday 10th— Invitation Section and all other semi-finals and finals. All correspondence should be addressed to Mr. W.

A. S. Vaughan, 10 Tremgarth, Wildmill, Bridgend. (Tel: 56161), who will be sending out entry forms in the very near future. Early acceptances are vital to ensure inclusion.

25 players have been named by the W.R.U. in the first Under-20 party to prepare for two matches in April, and Bridgend's Stuart Parfitt has been named as a squad centre. The first match will be against the Welsh Students at Cardiff R.F.C. Ground on Tuesday, April 15th (7.15 p.m.), the eve of the British Lions -v- The Rest of the World match at the Arms Park National ground on April 16th. It was thought that Chris Bradshaw would have been an automatic choice for this squad.

The Club is anxious to complete a photographic display at the Clubhouse to include all former Internationals. For this purpose they would appreciate the loan of individual or team photographs which include the following— Daph Davies, Bobby Delahay, Chas W. Jones, Steve Lawrence, Chris Matthews, Cyril Thomas. Other photographs, particularly of the 1920 and 1930 periods would be greatly appreciated and acknowledged.

Glamorgan County R.F.C. -v- North Wales at Maesteg, Monday, 7th April. Kick-off 7.00 p.m.

Why two credit lines are better than one.



The argument for opening a second credit line with Commercial Credit is a very down-to-earth one.

Quite simply, if you ever need financial advice then two heads are better than one.

However, the real benefits go much deeper. The fact is, putting all your financial eggs in one basket, with your bank, could leave you in a somewhat vulnerable position.

Furthermore the terms of your overdraft can be altered as a result of bank policy. Or because of changes in the national economy.

A second credit line with Commercial Credit could bring a little more security into your financial arrangements.

Because Commercial Credit loans are for a guaranteed term at fixed or variable rates.

And normally the only security we'd ask would be the equipment itself.

Commercial Credit can arrange plant and machinery finance, marine, aircraft and property finance, equipment leasing and invoice discounting.

We have worldwide assets of over £2 billion and 16 branches throughout the UK. And we'd like to meet you to explain the other benefits of a second credit line with us.

Why not ring your local Commercial Credit Branch Manager on Cardiff 482508 and arrange a meeting?

COMMERCIAL CREDIT

ROBERT WILLIAMS

Ogmore Farm Dairy

For all your High Quality Dairy produce.

Tel: BRIDGEND 880856



FIXTURE LIST & RESULTS 1985/86

1985		
Wed.	Sept. 4—Nantymoel (Cent.)	A 47-4
Sat.	7—Tredegar	H 37-18
Sat.	14—Newbridge	A 10-25
Wed.	18—Munster	H 26-9
Sat.	21—Saracens	H 17-9
Wed.	25—Llanelli	A 16-36
Sat.	28—Pontypool	A 8-36
Sat.	Oct. 5—Ebbw Vale	H 9-7
Wed.	9—Cardiff	A 16-7
Sat.	12—London Welsh	H 18-12
Tues.	15—Tredegar	A 10-9
Sat.	19—Coventry	A 4-32
Wed.	23—Swansea	A 13-32
Sat.	26—Aberavon	H 17-15
Wed.	30—Cross Keys	H 16-6
Sat.	Nov. 2—Bristol	A 15-19
Fri.	8—Neath	A 0-16
Sat.	16—SCHWEPES CUP Pontyclun	A 46-0
Sat.	23—Llandaff North	H 51-7
Wed.	27—South Glam. Inst.	H 25-16
Sat.	30—Pontypool	H 7-15
Wed.	Dec. 4—Pontypridd	H 23-14
Sat.	7—Abertillery	A 39-15
Wed.	11—Glam. Wanderers	A 7-8
Sat.	14—Neath	H 19-12
Sat.	21—SCHWEPES CUP Oakdale	H 59-9
B.D. Thur.	26—Maesteg	A 0-7

1986		
Sat.	11—Abertillery	H 32-9
Wed.	15—Penarth	A 23-12
Sat.	25—SCHWEPES CUP Dunvant	H 38-6
Tues.	Feb. 4—Newport	H 16-20
Sat.	Mar. 8—SCHWEPES CUP Maesteg	A 9-9
Wed.	12—Gloucester	H 10-7
Sat.	15—Llanelli	H 7-18
Sat.	22—SCHWEPES CUP -v- Cardiff at Swansea	A 9-17
Wed.	26—Newbridge	H 32-9
Sat.	29—Maesteg	H
E.M.	31—Pontypridd	A
Wed.	April 2—Cardiff	H
Sat.	5—Rosslyn Park	A
Wed.	9—South Wales Police	A
Sat.	12—Cross Keys	A
Mon.	14—Penarth	H
Sat.	19—Moseley	A
Wed.	23—Aberavon	A
Sat.	26—SCHWEPES CUP FINAL	A
Wed.	30—Swansea	H
Thur.	May 1—Camborne	A
Fri.	2—St. Ives	A
Sat.	3—Brixham	A
Wed.	7—Ebbw Vale	A

Results against Cardiff since 1966/67

(Bridgend scores first)

HOME:

1966-67—	3-14	1974-75—	24-10	
1967-68—	3-6, 3-6	1975-76—	3-12	
1968-69—	6-10	1976-77—	7-21	
1969-70—	14-3	1977-78—	6-18	
1970-71—	3-11	1978-79—	12-10	
1971-72—	19-6	1979-80—	4-3	
1972-73—	6-6	1980-81—	16-12	
1973-74—	18-21 (CUP),	13-7	1981-82—	18-16
			1982-83—	21-16
			1983-84—	34-10
			1984-85—	9-12

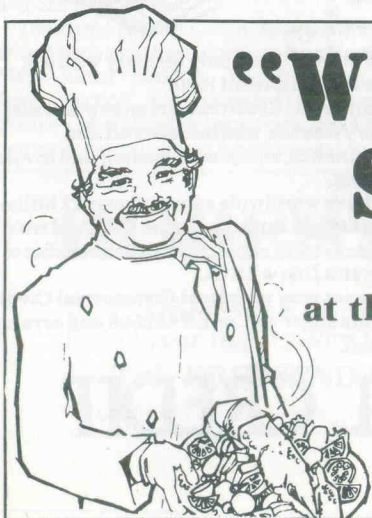
HOME SUMMARY:
Played 21 Won 10
Lost 10 Drawn 1.

AWAY:

1966-67—	16-14, 21-8	1974-75—	13-12, 6-4 (CUP)
1967-68—	0-14	1975-76—	12-12
1968-69—	11-6	1977-78—	7-6
1969-70—	6-0	1978-79—	12-10
1970-71—	3-3	1979-80—	17-9
1971-72—	6-0	1980-81—	22-6, 6-14 (CUP)
1972-73—	9-7	1981-82—	14-18
1973-74—	13-11	1981-82—	12-12 (CUP)
		1982-83—	6-29
		1983-84—	7-9
		1984-85—	13-34
		1985-86—	16-7, 9-17 (CUP)

AWAY SUMMARY

Played 24 Won 14 Lost 8 Drawn 2.



"WELCOME TO STEAKS"

RESTAURANT

at the Railway Inn, Bridgend
Tel. 2266

10% DISCOUNT OFFERED TO BRIDGEND
R.F.C. SUPPORTERS ON PRESENTATION
OF THEIR MEMBERSHIP CARDS

British Tissues

makers of

DIXCEL

and

FERN

Toilet Tissue

DIXCEL Checks

Kitchen Towels

DIXCEL

Facial Tissues

CRESCO

Industrial Products

send best wishes

British Tissues Ltd.,
Bridgend Paper Mills,
Llangynwyd,
Bridgend, Glamorgan.

British Tissues Ltd.,
Wrexham Industrial Estate,
Wrexham,
Clwyd.

BRINLEY GEORGE & CO.

Insurance and Mortgage Services

BUYING A HOUSE? The Complete Mortgage Service

£



100% Mortgages arranged *
Re-Mortgages
Home Improvement Loans
Council House Purchases

*Subject to Status

FAMILY SAVINGS AND PROTECTION SERVICE

£



Endowment Saving Plans—Life Assurance
Mortgage Protection—Income Protection
Lump Sum Investments
House and Contents Insurance

SELF EMPLOYED SERVICE

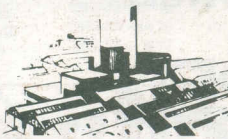
£



Personal Pension Plans
Partnership Protection Assurances
Permanent Health Insurance
Public Liability Insurance

BUSINESS ASSURANCE SERVICE

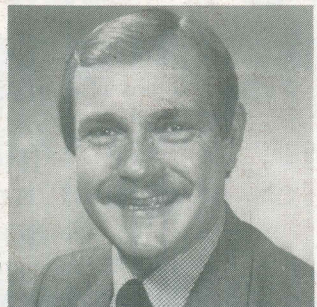
£



Flexible Pension Schemes
Partnership Protection Plans
Key Staff Protection Plans
Share Purchase Arrangements

Special life assurance arrangements for
Civil Servants, British Telecom
and Post Office Employees.

FOR FREE ADVICE AND PERSONAL SERVICE
In the privacy of your own home or office



TELEPHONE BRIDGEND (0656) 59776 ANYTIME