



**SWANSEA CRICKET & FOOTBALL CLUB**  
Founded 1873

**St. Helens Ground Swansea**

Saturday, 3rd December, 1988. K.O. 3.00 p.m.



**SWANSEA**

**CARDIFF**

**SWT**

MAIN SPONSORS FOR 1988-89 SEASON  
DIVERSIFIED PRODUCTS CORPORATION UK  
SOUTH WALES TRANSPORT CO. LIMITED



**PROGRAMME 30p DONATION TO CLUB**



# Lloyds Bank wishes Swansea R.F.C. every success



**Lloyds  
Bank**

THE THOROUGHbred BANK

Lloyds Bank Plc. 71 Lombard Street, London EC3P 3BS

Cover pic courtesy of South Wales Evening Post



## SWANSEA CRICKET & FOOTBALL CLUB

### OFFICERS

#### Life Patron:

His Hon. Judge Rowe Harding  
President: Roy Jones  
Club Chairman: D. Horace Phillips  
Hon. Treasurer: Brian Simpson  
Hon. Asst. Treasurer: J. Gwyn White  
Hon. Secretary: David P. Price  
Hon. Fixture Secretary: Jeff Atherton

#### Captains:

1st XV: Richard Moriarty  
2nd XV:

#### Club Office:

The Pavilion, St. Helens,  
Swansea.  
Tel: 464918



## SWANSEA & DISTRICT RUGBY SUPPORTERS CLUB

Patron: J. Brian Simpson  
President: Vernon R. Davies  
Chairman: Gerald Lindenburn  
Vice-Chairman: Tom Kiley  
Hon. Treasurer: Gwyn Griffiths  
Hon. Asst. Treasurer: Tom Kiley  
Hon. Secretary: Glyn Ellis  
Hon. Asst. Secretary: David James

#### Life Vice-Presidents

#### Messrs:

Hubert Thomas, Robert G. Kirby,  
Cliff Bancroft, Horace Leyshon,  
Eddie Parker, Glan Lewis, Rene  
Lecoindre, D. Horace Phillips  
Arthur Davies

#### Committee:

#### Messrs:

Hywel Lloyd, Dick Dobbs, Ron  
Bevan, Edgar Rees, Peter Ridgewell,  
Ted Chapman, Miss Margaret  
Pughe, Miss Ann Voisey, John Hill,  
Howell Williams, Bob Thomas

## FOREWORD

"Those perennial under-achievers" is how one Sunday newspaper correspondent described the Whites after their cup defeat by Glamorgan Wanderers. This observation must have an element of truth in it. On paper we often look so good, but so often we falter in the first twenty minutes of a game only to revive as the match progresses.

We all knew at the beginning of the season that things were not going to be easy. Yet in the four games culminating in the defeat of Neath things looked promising and then came the fall away. It is obvious that we are lacking two or three key players but coach Trevor James more than anyone was aware of the enormity of his task when he took over. He knew that the rebuilding process was not going to be a quick one. All great clubs go through a dismal period and it is now up to each member of the club from the committee down to the youngest supporter — to get behind the club and see them through this period. Of course we shall miss the excitement of the cup run, of course we shall miss the extra cash and alternative attractive fixtures will be hard to come by, but we must continue to support in the way we did against Neath.

Trevor James then knows that life at the top is not easy but so do others as has been demonstrated by the surprise resignations recently of Neath team manager Brian Thomas and Cardiff's senior selector Roger Beard.

We welcome Cardiff to St. Helen's today in a season when they too have been having problems on the field despite their recruitment of several new faces during the close season. It is sad to see two such great clubs as Swansea and Cardiff languishing in mid-table so to speak. To a degree it is inexplicable when one surveys the list of internationals and former internationals they are able to call upon.

Today's encounter will have added spice, of course since a number of former Whites have "defected" to the capital. Let us hope that both teams can put aside their indifferent form and provide us with a truly entertaining game.

Congratulations are due to Robert Jones on being the club's representative in the Barbarians v. Australia match, a game which showed that all the good things in rugby are not yet dead.

Finally, it was good to see both Mark Davies and Stuart Parfitt return after injury in the Bridgend game at the Brewery Field.

GLYN ELLIS

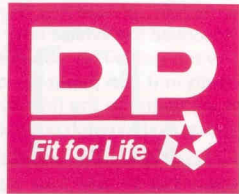
### Next Home Match

FRIDAY, 23rd DECEMBER, 1988

# MOSELEY

Kick Off 7.00 p.m.



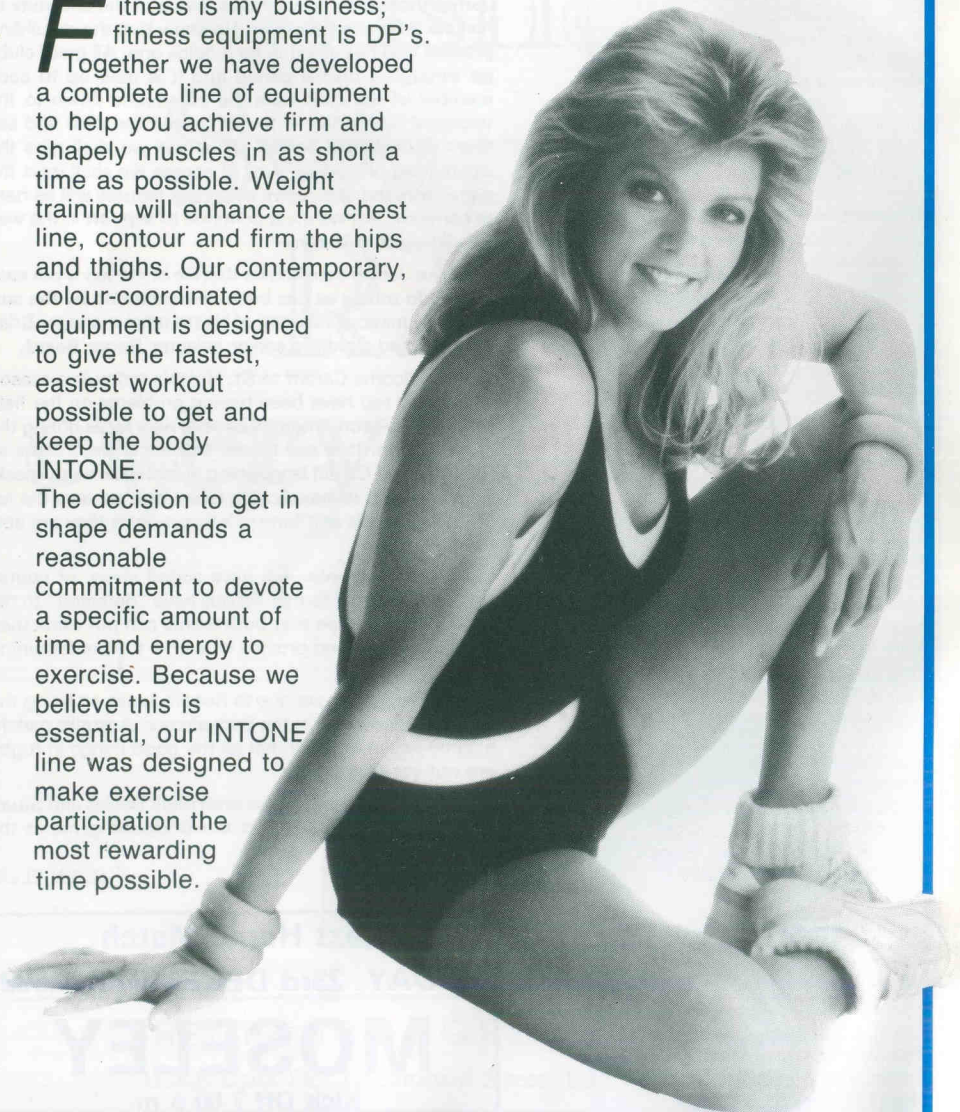


### DIVERSIFIED PRODUCTS

Garngoch Industrial Estate,  
Gorseinon, Swansea,  
West Glamorgan SA4 1WF  
Telephone: (0792) 894891  
Telex: 48687 DIVPRO G

**F**itness is my business; fitness equipment is DP's. Together we have developed a complete line of equipment to help you achieve firm and shapely muscles in as short a time as possible. Weight training will enhance the chest line, contour and firm the hips and thighs. Our contemporary, colour-coordinated equipment is designed to give the fastest, easiest workout possible to get and keep the body INTONE.

The decision to get in shape demands a reasonable commitment to devote a specific amount of time and energy to exercise. Because we believe this is essential, our INTONE line was designed to make exercise participation the most rewarding time possible.



For all your electrical requirements contact  
RICHARD MORIARTY

**R · D · M**

## ELECTRICAL SERVICES

INDUSTRIAL · COMMERCIAL  
DOMESTIC · INSTALLATIONS  
& MAINTENANCE

BEAUFORT HOUSE, BEAUFORT ROAD, PLASMARL INDUSTRIAL ESTATE,  
PLASMARL, SWANSEA, SA6 8JG

**Tel: (0792) 701256**

**bj Group Limited**

### Construction Division

offer the complete

---

DESIGN AND BUILD SERVICE

---

from conception to completion

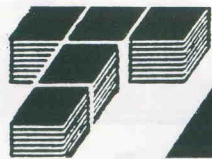
**bj Group Limited**

Beaufort House, Beaufort Road, Plasmarl, Swansea. Tel: (0792) 701414



SWANSEA CRICKET & FOOTBALL CLUB

wish to thank



**Taylor Tiles**  
(South Wales) Ltd.

BEAUTIFUL TILES ★ COMPETITIVE PRICES ★ HUGE STOCKS FOR IMMEDIATE  
SUPPLY ★ FRIENDLY ADVICE ★ TOOLS FOR THE HANDYMAN

*Specialists for all your tiling requirements*

DOMESTIC ★ COMMERCIAL ★ INDUSTRIAL

Full Fixing Service Available

**BEAUFORT ROAD, PLASMARL INDUSTRIAL ESTATE  
MORRISTON, SWANSEA - Telephone (0792) 797712**

Also at

**CARDIFF Tel. (0222) 594557**

**HAVERFORDWEST Tel. (0437) 5166**

FOR SPONSORING TODAY'S MATCH

## Stuart Gates Travel

8 MANSEL STREET, SWANSEA. Tel: 476060



4 DAY MINI BREAKS TO EDINBURGH  
AND PARIS TO COINCIDE WITH SCOTLAND v. WALES  
AND FRANCE v. WALES RUGBY INTERNATIONALS  
Scotland v. Wales 21st January 1989

Capital Hotel Edinburgh — £149 • Flights only from Cardiff — £129

France v. Wales 18th February 1989

Hotel Pulman, Saint Jacques — £136 • Flights only available Cardiff — £119

Details from MARGARET PUGHE on SWANSEA 475727

Rising Damp - Penetrating Damp - Woodworm & Dry Rot Problems

## Cambrian Building Preservation Ltd

Damp-Proofing Timber Infestation Specialists

WORK CARRIED OUT BY OUR  
QUALIFIED TECHNICIANS  
ESTIMATES AND SURVEYS FREE

**CAMBRIAN BUILDING PRESERVATION LIMITED**

Unit 19, Clarke Way, Winchwen Industrial Est., Winchwen, Swansea. Tel: 701471/792679

## IMPRESSIONS OF ST. HELEN'S AND THE ALL WHITES

By J. B. G. Thomas

St. Helen's has a warm place in my heart and an important one in my life. I recall with great pleasure the 1935 Swansea v. New Zealand match which started so many things going for me and changed my life. How could a rugby match do that?

I was 18 at the time and had known my future wife, Gwen, for a few months. I invited her to travel to Swansea with me to watch the big game as I had purchased two five shilling stand tickets from Walter Rees, Luckily she agreed, although at the time she was a shrewder critic of soccer rather than rugby. I believe she watched rugby because, Claude Davey, Vivian Jenkins and Wilf Wooller were the rugby 'pin ups' of their era!

The match was a superb one for Swansea, as they outplayed the All Blacks in the drizzle. Haydn Tanner and Willie Davies were superb behind a fighting pack of forwards, and Claude Davey a real match winner. He was one of my schoolboy heroes, a brilliant defender and a sharp maker of openings. Davies was a dream runner and Tanner a veteran at 18 years of age. Forwards D. J. Tarr and Harry Payne made it to the Welsh XV that also defeated the All Blacks.

They were heady days for the followers of Welsh rugby, and it is great players that make great sides. Leagues cannot do that and will not produce Grand Slam sides overnight. I took my wife to see Wales v. Ireland there in 1938, and we sat in Walter Rees's temporary seats on the tanner bank side. Of course, these seats prevented the tanner bank from having a clear view of the play and, as soon as the match started, pieces of turfs started flying. One struck my wife's new hat and she vowed not to visit St. Helen's again but that all changed after the war.

We were married then and I was with the "Western Mail" following "Old Stager", and she received V.I.P. treatment from St. Helen's during the happy winters and summers. They are generous in Swansea and we enjoyed ourselves. It was a long way from a plaice and chips supper for one shilling and sixpence (old money) after the 1935 match, and my wife would have liked to say "thank you!"

There were two other touring matches which proved exciting and the All Whites should have won both. First, the 1951 Springboks who snatched

a winning try near the end of a tremendous struggle and then the 1953 All Blacks were fortunate to escape with a draw. Swansea scored six points through two penalty goals by big John Faull, (later to become a successful British Lion). The All Blacks scored two tries through Elsom but early in the match, flanker Dil Johnson, scored a perfectly good try for Swansea that was disallowed. It would have made all the difference. However, Wales beat them at Cardiff, and it proved to be the last occasion for Wales to beat them. Of course, Wales deserved to win the "diving" match!

One of the best Cardiff - Swansea matches it has been my pleasure to watch was that of October 16, 1949 at the Arms Park which attracted the largest crowd for an all-Welsh club match (later beaten in 1951) at 36,000. Both sides were doing well after nine matches apiece with one defeat and so it was a clash of giants.

Swansea trailed by nine points to nil at the interval but then staged a dramatic recovery to win the match 18-12 and scored one of their greatest victories over their rivals. Bryn Evans led Swansea and Bleddyn Williams was in charge of Cardiff.

However, the main feature of the match, at least in the minds of the supporters, was the half-back duel between Alun Thomas and Roy Sutton of Swansea and Bill Cleaver and Rex Willis of Cardiff. The Swansea pair played well but when the team to play England was announced in January it was Cleaver and Willis at half-back.

Alun Thomas was capped later but the splendid Roy Sutton, a most modest player, missed out. It is good to talk to him now for he carries no resentment. I have enjoyed many matches too, especially between Swansea and the Barbarians for the All Whites always rise to the occasion.

There have been stirring battles with Llanelli and the meeting of the "Turks" and the "Jacks" have never been dull! Again, this season the splendid match with it's last minute victory over unbeaten Neath revealed what the All Whites can do when they try. They are out of form at the moment but they will be back. Who knows, it could be today, and Cardiff had better be prepared for a hard match!

Ymlaen, Abertawe



# We've joined a winning team

## LEASING & CONTRACT HIRE

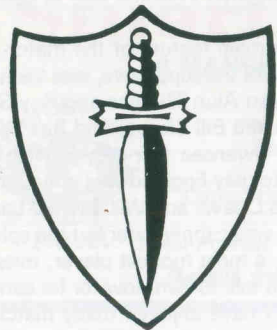
CARS & LIGHT COMMERCIALS. ANY MAKE OF VEHICLE SUPPLIED WITH OR WITHOUT MAINTENANCE. FULL BACK-UP SERVICE. WHATEVER YOUR NEEDS WHY NOT GIVE **TONY CLEMENT** or **DAVID YOUNG** a ring to discuss your requirements.



**BARRY**  
**(0446) 730770**

St Nicholas Road, Barry.  
South Glamorgan.

**Jordans**  
LEASE & CONTRACT HIRE LTD.



## Worthington

# Best

# Bitter

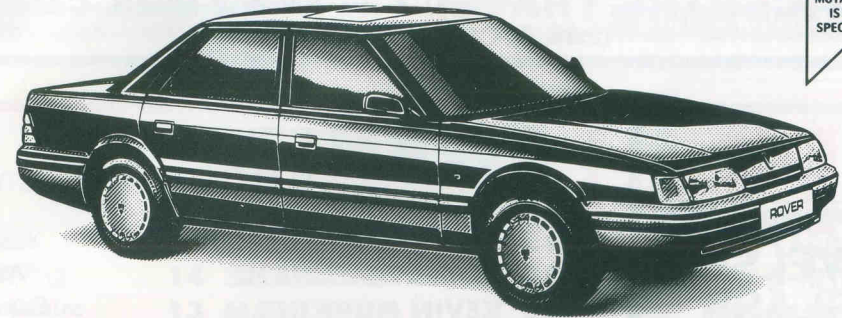
## GO FOR IT



## Welsh Brewers Ltd

# Fletchers of Swansea

511 CARMARTHEN ROAD, SWANSEA  
SA5 8LB TEL: (0792) 561166



## VEHICLE SALES

- FULL RANGE OF AUSTIN ROVER CARS
- USED VEHICLE SALES

## AFTER SALES SERVICE AND REPAIRS

### BODY REPAIR CENTRE

- VBRA APPROVED
- APPROVED BY LEADING INSURANCE COMPANIES

### PARTS AND ACCESSORIES

- DIRECT LINE - 561133

### SHELL FORECOURT - LEADED & UNLEADED FUEL

### VEHICLE HIRE

- DIRECT LINE - 651177



# Fletchers of Swansea

511 CARMARTHEN ROAD, SWANSEA  
SA5 8LB TEL: (0792) 561166



## INTERNATIONAL RUGBY — SUPPORTERS TOURS

SCOTLAND  
v. WALES  
EDINBURGH  
21st January 1989

FRANCE  
v. WALES  
PARIS  
18th February 1989

IRELAND  
v. WALES  
DUBLIN  
24th March 1990

Brochures from - Tel: 0222 492418

**CITICENTRE TRAVEL** - 27 Albany Road, Cardiff  
(formerly COUSINS TRAVEL)



**WELSH  
GLASS  
WORKS  
LTD**

WALES LARGEST GLASS  
DISTRIBUTORS

Every type of glass in stock  
Glass cut to size while you wait

- Capital uPVC Windows & Doors
- Aluminium Patio Doors
- Beta Louvre Windows
- Verrasin Safety Glass
- Double Glazed Units

SHOPFRONT BREAKAGES  
PROMPTLY REPLACED

SWANSEA (0792) 52341  
CARDIFF (0222) 399899  
and Emergency 24-Hr.  
Call Out Service

## SWANSEA

Colours: All White

- |                            |                |              |
|----------------------------|----------------|--------------|
| 15 ANTHONY CLEMENT         | Cefnwr         | Full Back    |
| 14 ROBERT SUBBIANI         | Asgell Dde     | Right Wing   |
| 13 KEVIN HOPKINS           | Canolwr Dde    | Right Centre |
| 12 BLEDDYN BOWEN           | Canolwr Chwith | Left Centre  |
| 11 TIM MICHAEL             | Asgell Chwith  | Left Wing    |
| 10 BEN CHILDS              | Maswr          | Outside Half |
| 9 ROBERT JONES             | Mewnwr         | Inside Half  |
| 1 ROBERT WILLIAMS          | Y Rheng Flaen  | Prop         |
| 2 BILLY JAMES              | Bachwr         | Hooker       |
| 3 KEITH COLCLOUGH          | Y Rheng Flaen  | Prop         |
| 4 RICHARD MORIARTY (Capt.) | Clo            | Lock         |
| 5 CHRIS ENGLAND            | Clo            | Lock         |
| 6 PAUL MORIARTY            | Blaenasgell    | Flanker      |
| 8 PAUL ARNOLD              | Wythwr         | No. 8        |
| 7 ALAN REYNOLDS            | Blaenasgell    | Flanker      |

Replacements: MARK TRUSLOVE, STEVE WHITE

Referee:

Mr. R. Yeman, Taibach, Port Talbot

## CARDIFF

Colours: Dark Blue, Light Blue

- |                        |                |              |
|------------------------|----------------|--------------|
| 15 MIKE RAYER          | Cefnwr         | Full Back    |
| 14 STEVE FORD          | Asgell Dde     | Right Wing   |
| 13 MARK RING           | Canolwr Dde    | Right Centre |
| 12 STEVE CRANDON       | Canolwr Chwith | Left Centre  |
| 11 GERALD CORDLE       | Asgell Chwith  | Left Wing    |
| 10 MALCOLM DACEY       | Maswr          | Outside Half |
| 9 RAY GILES            | Mewnwr         | Inside Half  |
| 1 GEOFF WHITEFOOT      | Y Rheng Flaen  | Prop         |
| 2 ALAN PHILIPS (Capt.) | Bachwr         | Hooker       |
| 3 DAVID YOUNG          | Y Rheng Flaen  | Prop         |
| 4 MIKE PARRY           | Clo            | Lock         |
| 5 MARK ROWLEY          | Clo            | Lock         |
| 6 GARETH ROBERTS       | Blaenasgell    | Flanker      |
| 8 HOWARD STONE         | Wythwr         | No. 8        |
| 7 RICHARD COLLINS      | Blaenasgell    | Flanker      |

Replacements: IAN GREENSLADE, A. MOORE

COLOUR TELEVISIONS

VIDEO RECORDERS

VIDEO CAMERAS

PORTABLE COMPONENTS

MICROPHONES

**Alpha  
Electrics**

**JVC**

19 NEWTON ROAD  
MUMBLES TEL: 367106

HI-FI COMPONENTS

RADIO CASSETTES

HI-FI MIDI SYSTEMS

HEADPHONES

VIDEO & AUDIO TAPES

*The Brickyard*

WALES LARGEST  
BRICK & BLOCK  
MERCHANT

*The Brickyard*

ENTERPRISE PARK  
SWANSEA 798855

WESTERN AVENUE  
CARDIFF 621365

*The Brickyard*

BUILDING CONTRACTORS • JOINERY MANUFACTURERS • SHOP & BAR FITTING



**Rees Davies  
Builders**

(Est. 1872)

Kilfield House, Enterprise Park, Winch Wen, Swansea, SA1 7DA Telephone. (0792) 797308

**BERL**

**BRITISH ELECTRICAL REPAIRS LTD.**

NORMANDY ROAD, LANDORE, SWANSEA

ELECTRICAL, MECHANICAL & GENERAL ENGINEERS

Repairs to all types of ELECTRICAL PLANT, METAL SPRAYING · Re-metalling of WHITE METAL BEARINGS

Tel: SWANSEA 53171/2 · Night Emergencies: SWANSEA 72992/75084. Bishopston 2296

Telex: 48327

District Manager: ROY HOPKINS. Registered MOD Repair Contractor Defence Standard 05/24

ELECTRICAL MOTOR REPAIRS AND REWINDSSSSS — FAST SERVICE

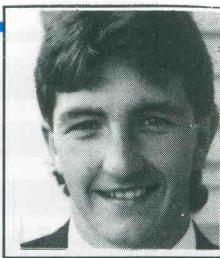
When trouble strikes, call BERL for fast action repairs, rewinds, overhauls, renewals, or conversions to any type or size of AC or DC machines. Speedy pick-up and delivery with ROUND-THE-CLOCK service in emergencies

**DELTA**  
Switchgear & Accessories  
Division





# CLF



## COUNTY LEASING & FINANCE LTD.

Specialists in the Field of Motor Vehicle Finance including

**HIRE PURCHASE • LEASING • CONTRACT HIRE**

Please contact: **DAVID RICHARDS** or **ROBERT JONES** on **SWANSEA 473707**  
for details and written quotations

10 ST. JAMES CRESCENT SWANSEA SA1 6DZ

Telephone: (0792) 473707

## McARTHUR FAULL STEEL STOCKHOLDERS

Est. 1841

COMPREHENSIVE STOCKS OF GENERAL STEEL PRODUCTS also  
SHEET, PLATE, TUBE & FITTINGS, RECTANGULAR & SQUARE HOLLOW TUBE  
FASTENERS, BLIND RIVETS, WIRE NAILS, SHOEING IRON, HORSE SHOES & NAILS

**P.V.C. & GALVANISED & SELF COLOUR WIRE ROLLS & PANELS**  
**GALVANISED CORRUGATED SHEET & NOVULUX SHEETS**



The McArthur Group of Companies

Please write for our Catalogue giving complete range

**MORRISTON, SWANSEA**

**TEL. (0792) 793702 Telex 48337**

Playing rugby . . . Watching rugby . . . Talking rugby

Whichever you prefer, there's only one satisfactory way of learning  
who's who and what's what, and that's by reading the



## South Wales Evening Post

It's team of rugby correspondents headed by Ron Griffiths provides  
unrivalled service. Place an order with your newsagent now, or to  
Advertise telephone SWANSEA 50841

## MAIN FORD DEALERS FOR SWANSEA

# C.E.M. Day Limited



**Main Dealer**

Llanelli Road, Garngoch  
Swansea SA4 2IL. Tel: (0792) 893041

NEW AND USED CAR SALES  
SERVICING AND REPAIRS  
ACCIDENT REPAIRS AND RESPRAYING  
SPARE PART SALES

**Self Drive - CARS, VANS, MINI BUSES, TRUCKS**  
CONTRACT HIRE AND LEASING

Beaufort Road, Plasmarl Industrial Estate,  
Swansea SA6 5HR. Tel: (0792) 310410

NEW AND USED CAR SALES  
SERVICING AND REPAIRS  
SPARE PART SALES

**IVECO**

**IVECO**

IVECO FORD TRUCK SALES  
LIGHT AND MEDIUM VAN SALES  
SERVICING OF COMMERCIAL VEHICLES  
SPARE PARTS

## Have you tried a



## lately





# Sportaprint

## The Club Sweater Specialists

Official suppliers to over 6,000 clubs throughout the world including Swansea and the Welsh Rugby Union.  
British Manufactured embroidered courtelle and lambswool Sweaters, Sportshirts and Sweatshirts

### THIS WEEK'S QUIZ

1. Against whom was Wales's last Five Nations Championship match at St. Helen's?
2. Which country were the last Rugby Union Olympic Champions?
3. Which club supplied most players to France's World Cup squad in 1987?

Winner of Quiz 7 — Gareth Jones, 52 Ridgeway, Killay, Swansea

Answers to Quiz 7 — 1. Fylde 2. Scotland, Ireland and Wales.

3. Baron Pierre de Coubertin (Founder of the modern Olympic Games)

Answers in writing to Sportaprint at 10 High Street, Swansea not later than 5.30 p.m. on Tuesday following Saturday matches and Friday following midweek matches.

The first correct answer drawn after the deadline will receive a magnificent All Whites V-neck sweater.

Answers and winners names and address will appear in future programmes.

Manufacturers and suppliers of high quality Rugby Jerseys to your own design.

*For further details contact:*

**SPORTAPRINT**

**10 High Street, Swansea. SA1 1LE**

**Tel: SWANSEA (0792) 55281**

## ROBERT NEIL SUBBIANI

Wing Threequarter, 5' 11" tall and weighs 11 stone, born in Clun Shropshire — three miles into enemy country. As one suspects his father is Italian, who lived in Shropshire and moved to Tenby, where Robert attended the Greenhill School. He played rugby for the 1st XV and was selected for Pembrokeshire schools, and then represented Wales at Under 20 and Under 21 level.

He is at present studying Physical Education at St. Paul's Cheltenham.

He has been connected with the All Whites for three seasons, being gradually introduced into the first team over that period, he now commands a regular squad position with Mark Titley and Bleddyn Taylor.

He is unmarried and enjoys listening to the Christians and eating Italian food.

Two people have influenced and



assisted him greatly in his interest and playing of rugby — Lloyd Evans — the Tenby coach and Huw Thomas — a teacher.

PHR

### Supporters' Club Trip

**SATURDAY 10th DECEMBER**

**NEWBRIDGE**

Leave 12 noon - Return 6.00 pm

Fare £3.00

### SUPPORTERS SHOP PRICE LIST

Courtelle Pullovers .....	£13.50	Sportsbags .....	£10.00
Childrens Courtelle Pullovers .....	£6.50	Pennants .....	£3.50
Lambswool Pullovers .....	£16.00	Badges .....	£1.00
Ties .....	£4.30	Car Stickers .....	50p
Sweatshirts .....	£10.50	Rosettes .....	50p
Children's Sweatshirts .....	£6.50	Pens .....	20p
T-Shirts (Adults) .....	£5.50	Key Rings .....	30p
T-Shirts (Children) .....	£4.00	Bookmarks .....	30p
Polo Shirt .....	£12.50	Address Books .....	40p
Umbrellas .....	£16.00	Mugs .....	£1.50
Scarves .....	£13.50		



# HANCOCK & BROWN

(TIMBER LTD) **HB**

- Building Quality Timber • Hardwood • Doors • Plywoods
- Mouldings • Chipboards • Windows • Insulation
- P.V.C. • GUTTERINGS Etc. Etc. Etc.

**Swansea (0792) 462346 & 472692**  
**LANGDON ROAD, PRINCE OF WALES DOCK, SWANSEA**

**FOR THE BEST DEALS AROUND CONTACT**



# ARTHUR BASSETT



NEATH ROAD, MORRISTON, SWANSEA  
Telephone 310200

**PEUGEOT & CITROEN DEALER IN SWANSEA**

Tel: SWANSEA 456555 (2 lines)

**ALL KINDS OF WASTE  
DISPOSAL UNDERTAKEN**



MEMBERS OF THE  
BRITISH SECONDARY  
METALS ASSOCIATION

## T. G. Bevan (Metals)

BUYERS OF SCRAP FERROUS & NON-FERROUS METALS  
SKIP HIRE / WASTE DISPOSAL SPECIALISTS

21A RICHARDSON ROAD, SWANSEA, SA1 3TQ

## VAUGHAN SOUND SYSTEMS LTD

LANGDON ROAD, PRINCE OF WALES DOCK, SWANSEA

Sales - Rentals - Indoor and Outdoor Hire Service

CLUBS · PUBS · HALLS · CHURCHES

SCHOOLS · FACTORIES ETC.

TRADE EQUIRIES WELCOME

**Tel: SWANSEA 54133**

## EXALL & JONES

Building Supplies

**WE DO IT  
BETTER!**

MORFA ROAD, (OFF NEW CUT ROAD)  
(Turn at Unit Engineering)

**SWANSEA 473748**

# FRF MOTORS

NEATH ROAD, MORRISTON

Your **volvo** main dealer

**Tel: 310999**

VAUXHALL ONCE DRIVEN  
FOREVER SMITTEN



# FRF MOTORS

NEATH ROAD, MORRISTON

Your local **VAUXHALL** dealer

**Tel: 310111**



## Match Ball Sponsors

10 Sept. Lansdowne <b>HODGES Menswear</b>	24 Sept. Newport <b>E. R. EVANS</b>	28 Sept. Pontypool <b>TURNMIL ENGINEERING</b>	15 Oct. Leicester <b>THE BRICKYARD</b>	22 Oct. Neath <b>Inst. of PERS Management</b>
4 Nov. Pontypridd <b>GLYN THOMAS</b>	11 Nov. Llanelli <b>LEON LYONS</b>	3 Dec. Cardiff <b>TEA LADIES</b>	23 Dec. Moseley <b>CAMBRIAN BUILDING PRESERVATIONS</b>	26 Dec. Glam. Wand. <b>REES DAVIES HOLDINGS</b>
31 Dec. Tredegar <b>DENMASTER</b>	2 Jan. Llanelli <b>WELSH BREWERS</b>	7 Jan. Aberavon <b>S.W. EVENING POST</b>	1 Feb. Ebbw Vale <b>E. R. EVANS</b>	15 Feb. S.G.I.H.E <b>W. ROY JONES</b>
8 Mar. Bridgend <b>S.W. EVENING POST</b>	25 Mar Harlequins <b>APEX PACKAGING</b>	27 March Barbarians <b>FORMER PLAYERS</b>	1 April London Welsh <b>ALBERT E. DAVIES</b>	12 April Cross Keys <b>S. WALES VENDING SERVICES</b>

### TODAY'S MATCH BALL SPONSORS

# TEA LADIES

**SWANSEA  
TOYOTA  
CENTRE**

*That's motoring*

Swansea Enterprise Park  
Viking Way, Winch Wen, Swansea  
Tel: (0792) 710055

Let us do the driving  
this Christmas  
and the only thing  
you'll be  
blowing into  
is this.



Let us do the driving to your Christmas Party and we will take care of all your transport needs - ferrying from 12 to 74 people,

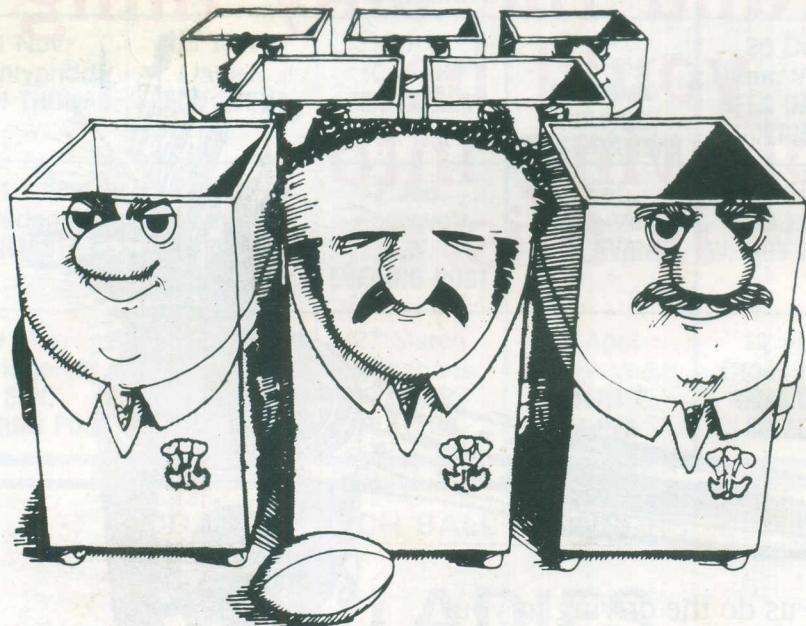
leaving you free to enjoy yourself. Then when it's over we'll take you home again - right to your door. For further information ☎ Swansea 456101 or 474179.



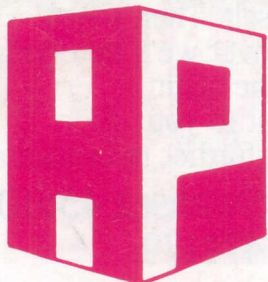
**SWT COACHES**



# THE BEST PACK IN WALES



- ★ Manufacturers of printed corrugated cases and die-cut fitments
- ★ Contract packing, shrink wrap packaging
- ★ Component assembly, collating, etc.
- ★ Class 1 clean cell facilities



*Apex Packaging*  
(SWANSEA) LTD.

**YNYSCEDWYN INDUSTRIAL ESTATE, YSTRADGYNLAIS  
SWANSEA, WEST GLAMORGAN, SA9 1DS  
TELEPHONE: (0639) 844830**