

# HARLEQUIN FOOTBALL CLUB



Red Star

CLUB SPONSOR

BIRKETT

A. D. STOOP

F. M. STOOP

CHAPMAN

GIMSON (R.)



OFFICIAL PROGRAMME

50P

G. V. C.

RIVETT-CARNAC

# HARLEQUIN FOOTBALL CLUB



*President:*  
K. H. CHAPMAN

*Chairman:*  
R. F. LOOKER

*Hon. Secretary:*  
C. M. HERRIDGE

*Hon. Treasurer:*  
G. C. ANDERSON

*Club Vice-Captain:*  
P. WINTERBOTTOM

*Club Captain:*  
C. J. OLVER

*Club Coach:*  
G. ASHBY

*Chairmen: Playing Committee:*  
R. HILLER G, C, MURREY





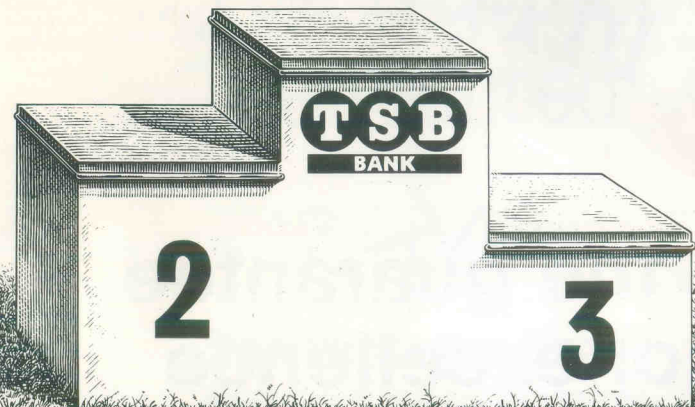
McLACHLAN

## COURAGE

The proud sponsors  
of the English Clubs Championship.



YOU  
ALWAYS  
KNOW  
WHERE  
YOU  
STAND  
WITH  
US.



W.T. Moonie, Branch Director, TSB Bank plc, Retail Banking,  
62 Lombard Street, EC3V 9EJ. Tel: 01-929 1755.

The

bank

that

likes

to

say

yes.



**HARLEQUINS ALWAYS  
PLAY WITH GILBERT  
MATCH BALLS**



**- the guarantee  
of excellence**

**Why not try  
Pentagon?**

Commercial Stationery



Office Furniture



Computer Supplies



Printing



Office Equipment

**...you'll soon be  
converted**



**The Pentagon Group**

Pentagon House, PO Box 45, Kingsland Industrial Park,

Basingstoke, Hampshire RG24 0LJ

Telephone: (0256) 479111

Facsimile: (0256) 840106 Telex: 858892

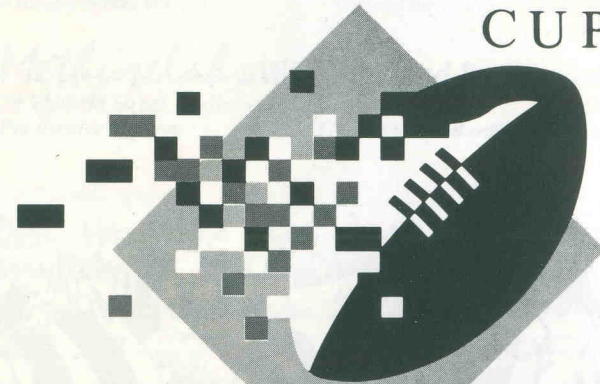
FROM STRENGTH TO STRENGTH...



adidas 



THE  
PILKINGTON  
CUP



1989-90

RFU CLUB KNOCK-OUT COMPETITION

ROUND 1	SATURDAY 16TH SEPTEMBER
ROUND 2	SATURDAY 4TH NOVEMBER
ROUND 3	SATURDAY 27TH JANUARY '90
ROUND 4	SATURDAY 10TH FEBRUARY '90
QUARTER FINALS	SATURDAY 24TH FEBRUARY '90
SEMI FINALS	SATURDAY 24TH MARCH '90
FINAL	SATURDAY 5TH MAY '90 TWICKENHAM

PILKINGTON : CLEARLY A WORLD LEADER



# MAKE SURE YOU'RE NO PUSHOVER



In today's complex business world, sound advice is crucial. If you want Robson Rhodes in your team, contact Jim Sloane on

**01-251 1644**

**ROBSON RHODES**

Chartered Accountants  
Fourteen offices in the UK

Enjoy the finest of wines and food... at reasonable prices.

## Cork & Bottle Wine Bar

44-46 Cranbourn Street WC2

01-734 7807

Open lunch and dinner every day

'The 1984 Standard's Wine Bar of the year'

## Shampers Wine Bar and Brasserie

4 Kingly Street W1

01-437 1692

Closed Saturday evening and Sunday

Pre theatre dinners

## Methuselabs Wine Bar and Brasserie

29 Victoria Street, Parliament Square SW1

01-222 3550

Closed weekends

Pre theatre dinners

'The 1986 Standard's Wine Bar of the year'

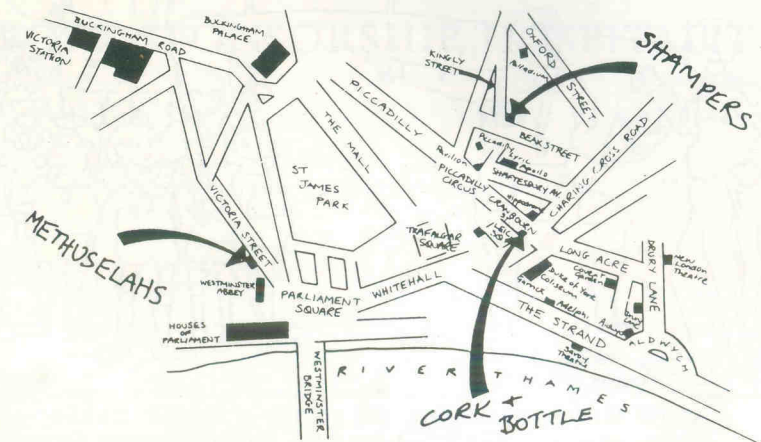
"Don Hewitson has done more than anybody to encourage customers to be adventurous. Excellent Provencal food."

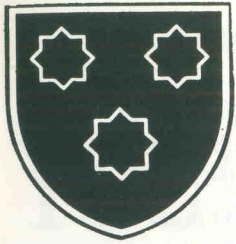
DAILY MAIL

Attracts faithful bands of connoisseurs who appreciate the range of reasonably priced wines and consistently good food."

INTERNATIONAL HERALD TRIBUNE

What more can we say?





# ST. PHILIP'S SCHOOL

(Established 1934)

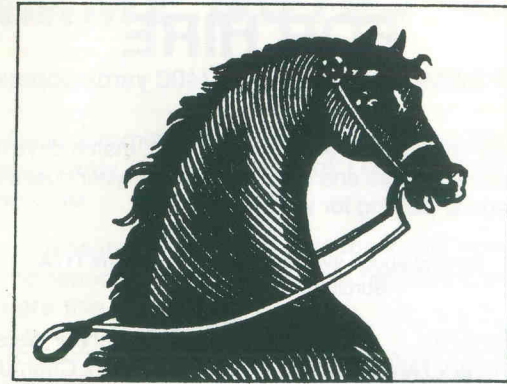
6, Wetherby Place, London, S.W.7.

(Tel: 01-373 3944)

*Independent Education for  
Catholic prep schoolboys in  
Central London, since 1934*



"And I say he can play; his mental age is only nine and a half!"



## EQUUS DESIGN

DESIGN, VISUALS, PACKAGING  
SPORT SPONSORSHIP, HOSPITALITY

41/42 FOLEY STREET LONDON W1P 7LD  
TELEPHONE 01-255 3666 FAX: 01-436 8408

TWICKENHAM INTERNATIONAL AND REPRESENTATIVE  
GAMES 1988/89

## HOSPITALITY SITES FOR HIRE

AT STOOP MEMORIAL GROUND (400 yards approx. R.F.U.)

Hire a 40' x 40' (or larger) area on principal R.F.U. match days for your marquees/parties/barbecues and entertainment for your customers and friends. Reserved car parking for your vistors.

Limited space available. Details -PO Box 117A  
Surbiton, Surrey, KT6 6HT

4.11.89 England v Fiji	17.2.90 England v Wales
25.11.89 Barbarians v New Zealand	7.4.90 County Champ. Final
12.12.89 Oxford v Cambridge	5.5.90 Pilkington Cup Final
23.12.89 England B v Russia	12.5.90 Middlesex Sevens
20.1.90 England v Ireland	

### HARLEQUIN FOOTBALL CLUB CAR PARKING

Reserved car parking is available at Stoop Memorial Ground

To: G.Young, 208 Whitton Road, Twickenham, Middlesex, TW2 7RE.  
Please send me the following car parking tickets for which I enclose a cheque  
for £ , made out to Halequin F.C., together with SAE.

4.11.89 England v Fiji	.....@ £5.....
25.11.89 Barbarians v New Zealand	.....@ £10.....
12.12.89 Oxford v Cambridge	.....@ £5.....
23.12.89 England B v Russia	.....@ £5.....
20.1.90 England v Ireland	.....@ £10.....
17.2.90 England v Wales	.....@ £10.....
7.4.90 County Champ. Final	.....@ £5.....
5.5.90 Pilkington Cup Final	.....@ £5.....
12.5.90 Middlesex Sevens	.....@ £10.....
Total	.....£.....

From:Name .....

Address .....

..... Tel. No. ....

*Because of limited space early booking is strongly advised*

## PROGRAMME NOTES

We welcome Cardiff, their committee and supporters to the Stoop today for what is becoming an increasing rarity, in these days of League rugby, a match between ourselves and a Welsh club.

Cardiff, like ourselves, are searching for their best form and trying to get into top gear for the second half of the season and with Christmas behind us, we can look forward to an excellent contest here this afternoon.

These notes have to be written somewhat in advance of publication owing to the holiday so this is an opportunity to take stock of the season so far. There has really only been one major disaster to date and that was the loss in the league at Saracens. Sure they were in the middle of a purple patch - or is it a continuing purple patch - but now we must rely on the errors of others if we are to rise above our current fourth position by the end of the season. That is of course assuming that we can hold off the challenge of Park, Gloucester, Nottingham and Moseley, our opponents in the remaining matches.

In the cup it is quite another story and our ability to progress beyond the third round is entirely in our hands. In four weeks to the day we will find out whether or not Will Carling did us a favour by drawing Harlquins out of the hat to play away at Bath. With the side at full strength and with the support of everyone concerned with the club there is every reason to believe that it will be Quins who will go into the draw for round four.

Enquiries at Bath reveal that the match is already a sell out, so if you want to get to the game and support the team now is the time to act. Stand tickets for Harlequin members are priced at £10 inclusive of the return coach fare and there are also some ground tickets available at £3 (coach not included). The allocation of these tickets will be on a "first come - first served" basis. Members should write to Basil Lambert in the Club Office enclosing a cheque payable to Harlequin F.C. and a stamped addressed envelope.

We wish you all a pleasant afternoon, and a happy and prosperous New Year.

NEXT HOME FIXTURE:

SATURDAY 13th JANUARY 1990

# HARLEQUINS v ROSSLYN PARK

KICK-OFF 3.00 p.m. AT STOOP MEMORIAL GROUND



# PLAYER PROFILES



## JON EAGLE - Wing

**Born:** 2/8/60, Bradford

**Height:** 5ft 8ins **Weight** 11st 8lbs

Jon was educated at Leeds Grammar School and Hull University. Before joining Quins in 1987, he played for Headingley and has played for the English Universities and Yorkshire. Originally a centre he denies as malicious the rumour that he moved to the wing only because it was thought he couldn't pass the ball. His tenacity has served Harlequins well both in the 1st XV and seven a side competitions. He was a member of the side which beat Wasps 54-0 in the first national sevens final and captained the side which won the Middlesex sevens. Injury in a pre-season game against Kelso kept him out of action until mid November but his sense of humour and determination kept him going and he has now successfully put the injury behind him. Jon is a Sales Manager and lives in Twickenham.

## SEASON 1989/90

### COURAGE CLUBS CHAMPIONSHIP

#### DIVISION 1

Team	P	W	D	L	F	A	Pts
Bath .....	7	6	0	1	140	68	12
Gloucester .....	7	5	1	1	145	92	11
Wasps .....	7	5	0	2	148	64	10
Harlequins .....	7	5	0	2	147	92	10
Saracens .....	7	4	1	2	121	111	9
Leicester .....	7	4	0	3	166	101	8
Orrell .....	7	3	0	4	116	76	6
Bristol .....	7	3	0	4	76	86	6
Rosslyn Park .....	7	3	0	4	77	133	6
Nottingham .....	7	2	0	5	113	108	4
Moseley .....	7	1	0	6	77	152	2
Bedford .....	7	0	0	7	43	286	0

1st XV FIXTURES		(J. OLVER)			
Date	Opponents	V	Result	For	Agnst
Aug 25	DUTCH TOUR	A	W	39	12
Aug 27	D.I.O.K. Leiden	A	W	35	3
	Kelso	A	W	30	3
Sep 2	Northampton	A	L	7	23
9	BATH*	A	L	12	32
13	Met. Police	A	W	26	13
16	Llanelli	A	L	10	42
23	WASPS*	S	W	12	9
27	Loughborough University	S	W	19	11
30	London Irish	T	W	53	12
Oct 4	West London Institute	S	W	33	10
7	Swansea	T	L	14	21
14	BEDFORD*	A	W	71	8
18	Askeans	S	W	30	20
21	London Scottish		Cancelled		
28	ORRELL*	S	W	15	9
Nov 4	Cambridge University	A	L	10	34
11	BRISTOL*	S	W	13	7
18	SARACENS*	A	L	9	15
25	LEICESTER*	S	W	15	12
Dec 2	Blackheath	S	W	24	17
9	Bedford	S	W	57	10
16	Rugby	A	L	22	25
23	Richmond	S	W	20	18
30	Cardiff	S	S		
Jan 6	Wasps	A	S		
13	ROSSLYN PARK*	S	S		
20	Old Belvedere	S	S		
21	Saracens	S	S		
27	Pilkington Cup-3rd Round				
Feb 3	London Welsh	S	S		
10	Pilkington Cup-4th Rnd				
18	Headingley	S	S		
24	Waterloo	A	A		
Mar 3	Gosforth	A	A		
10	GLOUCESTER*	A	A		
17	Coventry	A	A		
24	Pilkington Cup Semi Final				
31	NOTTINGHAM*	S	S		
Apr 7	Bristol	A	A		
14					
21	Rosslyn Park	A	A		
28	MOSELEY*	A	A		
May 5	Pilkington Cup Final				

**P-22 W-15 D-0 L-7 F-542 A-367**

\* COURAGE LEAGUE  
T - TWICKENHAM RFU GROUND  
S - STOOP MEMORIAL GROUND

#### RESULTS TO 16/12/89

JAGUARS		(S. Nicholas)			
STAINES - CANCELLED					
<b>P-18</b>	<b>W-13</b>	<b>D-0</b>	<b>L-5</b>	<b>F-338</b>	<b>A-144</b>
"A1"		(M. Claxton)			
<b>P-11</b>	<b>W-3</b>	<b>D-0</b>	<b>L-8</b>	<b>F-244</b>	<b>A-144</b>
"A2"		(I. Stoppani)			
REIGATE - CANCELLED					
<b>P-10</b>	<b>W-5</b>	<b>D-0</b>	<b>L-5</b>	<b>F-200</b>	<b>A-194</b>
UNDER 19					
DORKING - W 64-0					
<b>P-3</b>	<b>W-3</b>	<b>D-0</b>	<b>L-0</b>	<b>F-123</b>	<b>A-13</b>

#### WANDERERS FIXTURES (M. WALL)

Date	Opponents	V	Result	For	Agnst
Sep 1	Northampton	A	W	17	3
9	London Welsh	H	L	7	40
16	Henley	H	L	16	24
23	Moseley	A	L	0	20
30	London New Zealand	A	L	14	26
Oct 7	Blckheath	A	L	9	34
14	Rugby	A	W	20	0
21	Cambridge University LX	A	W	37	0
28	Wasps Vandals	H	L	8	20
Nov 4	Richmond Vikings	A	D	14	14
8	7th Para RHA	H	Cancelled		
11	Bristol	A	L	9	35
18	Rosslyn Park	H	L	19	20
25	Leicester	A	L	18	44
Dec 2	Bath II	H	L	12	31
9	Wimbledon	H	W	6	4
16	Met Police II	A	L	9	15
23	Richmond Vikings	H			
30					
Jan 6	Bedford	A			
13					
20	Saracens Crusaders	H			
27	Rosslyn Park	A			
Feb 3	London Scottish	H			
10					
17	London Irish	A			
24	Nuneaton	A			
Mar 3	Bristol United	H			
10	Gloucester United	H			
17	London Welsh	A			
24	7th Para RHA	A			
31					
Apr 7	London Scottish	A			
14					
21	Blackheath	H			
28	Moseley	H			

**P-16 W-4 D-1 L-11 F-215 A-330**

# OUR VISITORS TODAY - CARDIFF

FOUNDED - 1876

GROUND - **CARDIFF ARMS PARK, WESTGATTE STREET, CARDIFF**  
MOST CAPPED PLAYER - **G.O. EDWARDS (WALES) 53 CAPS**

We became the first London club ever to appear at Cardiff Arms Park on 1/4/1882 - this game resulted in a 0-0 draw. In the next nine games we won one (4 tries to one) drew two (0-0 and 1 try each) and lost five (1 try to 1 goal and 1 try, nil to 2 goals and 1 try, nil to 1 drop goal and 6 tries, nil to 3 goals and 3 tries and finally nil to 1 try), one game was cancelled. We did not play again until 17/4/1911 at Cardiff - this was a win for Cardiff 5-10. Our second win came thirteen years later on 21/4/1924 at Cardiff. In the first half R.W. Hamilton-Wickes scored a try and H.B. Style kicked a conversion for a 5-0 lead. In the second half D.E. Davies got a try for Cardiff but a V.G. Davies try, another conversion by H.B. Style and a drop goal from A.L. Gracie set up a 14-3 win.

Last season's game was played on 15/10/88 at Cardiff. We sent a very much weakened team as a result of the London Division playing against Australia. Marcus Rose got two tries and two conversions and Jay Johnston and Tim Bell got a try apiece, but Cardiff scored eight tries and with G. John kicking three conversions ran out reasonably easy winners 20-38.

This season Cardiff had a game against the touring New Zealanders and although they lost 15-25, they were by no means beaten easily.

PLAYING RECORD: BEFORE POINTS SCORING INTRODUCED (1882/83 1885/6)

**P-9 W-1 D-3 L-5 C-1 F6T A6G 1DG 14T**

PLAYING RECORD: AFTER POINTS SCORING INTRODUCED (1886/7-onwards)

**P-110 W-21 D-7 L-82 C-5 F-964 A-1660**

BIGGEST WINNING MARGIN: **34-6 4/4/1983 Cardiff**

MOST POINTS SCORED: **34-6 4/4/1983 Cardiff**

HEAVIEST DEFEAT: **8-47 9/12/1972 Stoop Memorial**

MOST POINTS AGAINST: **8-47 9/12/1972 Stoop Memorial**

**17-47 24/10/1981 Twickenham**

## PREVIOUS GAMES (Last 10 Seasons)

27/10/79	Twickenham	L	19-43	12/11/83	Richmond	L	12-17
7/ 4/80	Cardiff	L	18-26	22/10/83	Twickenham	L	7-26
25/10/80	Twickenham	L	12-31	23/ 4/84	Cardiff	W	16- 9
20/ 4/81	Cardiff	L	13-19	27/10/84	Cardiff	L	19-25
24/10/81	Twickenham	L	17-47	26/10/85	Twickenham	L	16-38
12/ 4/82	Cardiff	L	13-18	25/10/86	Cardiff	L	19-26
4/ 4/83	Cardiff	W	34- 6	24/10/87	Twickenham	L	12-20
				15/10/88	Cardiff	L	20-38

## HARLEQUIN TEAM INFORMATION (1989/90 Season)

MOST APPEARANCES: **17-G. THOMPSON; 13-R. LANGHORN;**

**12-R. GLENISTER; 11-S. HENDERSON, C. LUXTON, J. OLVER, D. PEARS, M. WEDDERBURN; 10-P. BRADY, C. SHEASBY**

MOST TRIES: **12-R. GLENISTER; 8-G. THOMPSON; 5-C. SHEASBY**

MOST POINTS: **112-D. PEARS (4T 18C 3DG 17PG)**

# HARLEQUINS v CARDIFF

SATURDAY 30th DECEMBER 1989

Kick-Off 3.00 p.m. at Stoop Memorial Ground

The ball for today's match has been kindly donated by **ALEX SAWARD**

HARLEQUINS		CARDIFF
Colours: Light Blue, Magenta, Chocolate, French Grey, Black and Light Green Shirts, White Shorts		Colours: Dark & Light Blue Hooped Shirts & Blue Shorts
15	Full Back	
14	Right Wing	
13	Right Centre	
12	Left Centre	
11	Left Wing	
10	Fly Half	
9	Scrum Half	
1	Prop	
2	Hooker	
3	Prop	
4	Lock	
5	Lock	
6	Flanker	
8	No. 8	
7	Flanker	
	Replacements	
16		
17		
	*International	
Referee:		
Touch Judges		

**HARLEQUINS****CARDIFF**

15	S Thresher	Full Back	R Jones
14	J Eagle	Right Wing	S Ford
13	W Carling*	Right Centre	M Ring*
12	I Wood	Left Centre	A Donovan
11	M Wedderburn	Left Wing	D Griffiths
10	M Fletcher	Fly Half	D Evans
9	R Glenister	Scrum Half	A Booth
1	D Curtis	Prop	M Griffiths
2	N Killick	Hooker	I Greenslade
3	A Young	Prop	D Young
4	R Langhorn(C)	Lock	A N Other
5	M Bradley	Lock	S Roy
6	C Sheasby	Flanker	J Carruthers(Capt)
8	D Thresher	No. 8	H Stone
7	C Butcher	Flanker	M Lloyd

## Replacements

16	S Henderson	S Nunnely
17	G Thompson	M De Maid

\*International

Referee: N Cousins (LSRFUR)

STOP PRESS: Revised details as at 29th December 1989.

## HARLEQUIN SUPPORTERS' CLUB . . . . .

We are holding an informal get-together for members at the Stoop after the game against London Welsh on 3rd February. Will members please return ASAP the slip attached to the newsletter recently sent out if they are able to come.

DON'T DELAY IN BOOKING A SEAT ON THE COACH TO BATH ON THE 27TH JANUARY -- COST £10 WHICH INCLUDES GUARANTEED MATCH TICKET FOR THE STAND -- FIRST COME FIRST SERVED -- THEY ARE SELLING FAST. TO BOOK, TELEPHONE SID STEVENS ON 0344 422586.

The committee would like to take this opportunity of wishing all members a very Happy and Prosperous New Year.

### PILKINGTON CUP - 3RD ROUND

## **BATH**

AT BATH R.F.C. ON 27TH JANUARY 1990

### MEMBERS AND OFFICIAL SUPPORTERS ONLY

#### **COSTS INCLUSIVE OF COACH FROM STOOP MEMORIAL GROUND**

STAND TICKET — £10.00

GROUND TICKET ONLY — £8.00

GROUND TICKET OAP's AND CHILDREN — £6.00

PLEASE MAKE ALL REMITTANCES FOR TICKETS (INCLUDING A STAMPED AND ADDRESSED ENVELOPE) TO:

HARLEQUIN FOOTBALL CLUB  
ADMINISTRATION OFFICE  
STOOP MEMORIAL GROUND  
CRANEFORD WAY  
TWICKENHAM, MIDDLESEX

**BOOK EARLY - AVOID DISAPPOINTMENT  
REMEMBER FIRST COME . . . FIRST SERVED!!**

## COACHES FOR AWAY GAMES . . . . .

To book please phone Sid Stevens on 0344 422586

Gloucester	10/3/90
Bristol	7/4/90
Moseley	28/4/90

Times of departure from 'Stoop' to be advised.

## HARLEQUIN SUPPORTERS' CLUB

# MEMBERSHIP APPLICATION FORM

(BLOCK LETTERS PLEASE)

Surname ..... Title .....

Christian Names .....

Address .....

Post Town ..... County .....

Post Code .....

Telephone ..... Occupation .....

Class of Membership required ADULT / JUNIOR (Under 18)

(Please delete where applicable)

Date of Birth (If Under 18) .....

I enclose my first year's subscription. 1st September - 31st August.

(ADULT £5 — JUNIOR £2)

(Cheques should be made payable to "Harlequin Supporters' Club")

Signed ..... Date .....

Please return form to Mr. R. McCormack, 'Bumbles' The Lees, Boughton Aluph, Nr. Ashford, Kent TN25 4HX. Tel. No: (0233) 622971.

*Autographs*

YOU ARE CORDIALLY INVITED TO VISIT  
**THE HARLEQUIN SHOP**

(Adjacent to the main stand)

TO VIEW A RANGE OF  
**EXCLUSIVE  
HARLEQUIN SPORTS  
PRODUCTS**

–Acrylic Scarves – Broach and Pendant Rondels  
Golf Umbrella's – Hats – Jog Suits  
Long Sleeve Pullovers – Sleeveless Slipovers  
Replica Jerseys – Short Sleeve Leisure Shirts  
Sports Towels – Stick Pins – Sweatshirts

**AND ITEMS RESTRICTED TO HARLEQUIN  
MEMBERS**

– Blazer Badges and Button Sets  
Cravats – Cuff Link Sets – Lambswool Scarves  
Players Jerseys – Tie Bar Clips – Ties and Bow Ties

PLEASE BUY DIRECT FROM THE SHOP OR COMPLETE AND POST  
YOUR MAIL ORDER FORM.

ENQUIRIES AND INFORMATION - TEL (01) 892 0822

# STAW

## DISTRIBUTION

Try us and convert to  
**THE COMPLETE  
MARKETING SUPPORT  
AND  
DISTRIBUTION SERVICE**

Providing the following

DISTRIBUTION OF BROCHURES AND POINT OF SALE  
COUPON RESPONSE AND PREMIUM FULFILMENT  
TRANSPORT · MAILING · MAIL ORDER · COLLATION  
COMPUTER SERVICES · EXHIBITION SUPPORT · STORAGE  
PACKING · IMPORT AND EXPORT · AIR FREIGHT

Why not telephone us and discuss your requirements with  
our sales manager Colin Ackehurst on 01-843 2255.

Staw Distribution Services Ltd  
Based in London (Heathrow) and Telford

## The Metal Drum Company Ltd.

QUALITY ---- SERVICE



*Suppliers of 50 gal - 4 gal drums to  
the Chemical, Oil and Paint Industries*

DENE BRIDGE ROAD  
CHILTON, Near FERRYHILL  
COUNTY DURHAM DL17 0NU

Telephone: BISHOP AUCKLAND (0388) 720391/2  
Contact: R. S. or T. RAWLE

**O.W.I.**  
**Wish Every**  
**Success**  
**to the**  
**HARLEQUINS**  
**This Season**

*Expertise is  
the name of the game.*



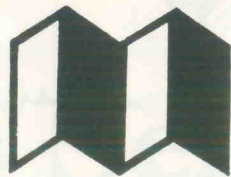
*Price Waterhouse*



# The Winning Line-up

THE TEAM FROM  
**MANCHUNA  
BUILDERS**

Specialist Builders and  
Painting Contractors



MANCHUNA BUILDERS LIMITED

TANNERS FARM, BALCOMBE ROAD, HORLEY, SURREY. RH6 9EF

Telephone Horley 0293 782496

# OUTSTANDING PERFORMANCE

---

Harlequin  
Football Club

---



**And the outstanding four wheel drive Sierra XR4x4**





**Like  
Harlequins  
we must  
be worth  
a try.**

**SDS**

Site Development Services

Labour only Sub-contractors

18 Duke Street, Reading, Berkshire  
Tel: 0734 53119

**WISHING YOU A  
GOOD SEASON**

HUNTERS ARMLEY  
LIMITED  
TAKE THIS OPPORTUNITY  
TO WISH HARLEQUIN  
FOOTBALL CLUB  
A GOOD AND  
SUCCESSFUL 1989' 90  
SEASON

**HUNTERS  
ARMLEY**

Web Offset and Sheet Fed Colour Printers  
2 Dryen Street  
Covent Garden  
London WC2E 9NA

**When the Tour is over  
pass your baggage to the  
New Zealand Forwarding  
Agency.**



**NEW ZEALAND FORWARDING AGENCY  
INTERNATIONAL BAGGAGE SHIPPERS  
TRADING SINCE 1959**

**Telephone: 01-949 0627**

**ASSOCIATED  
MEDIA GROUP**

**Publishers of Magazines  
and  
Illustrated Books  
wish the  
Harlequins  
a very successful season**

13 Tideway Yard, Mortlake High Street, Barnes, London SW14 8SN  
Telephone 01-878 8577 Fax 01-878 4620

# Capital



**7-57 seater luxury coaches for  
private or contract hire**

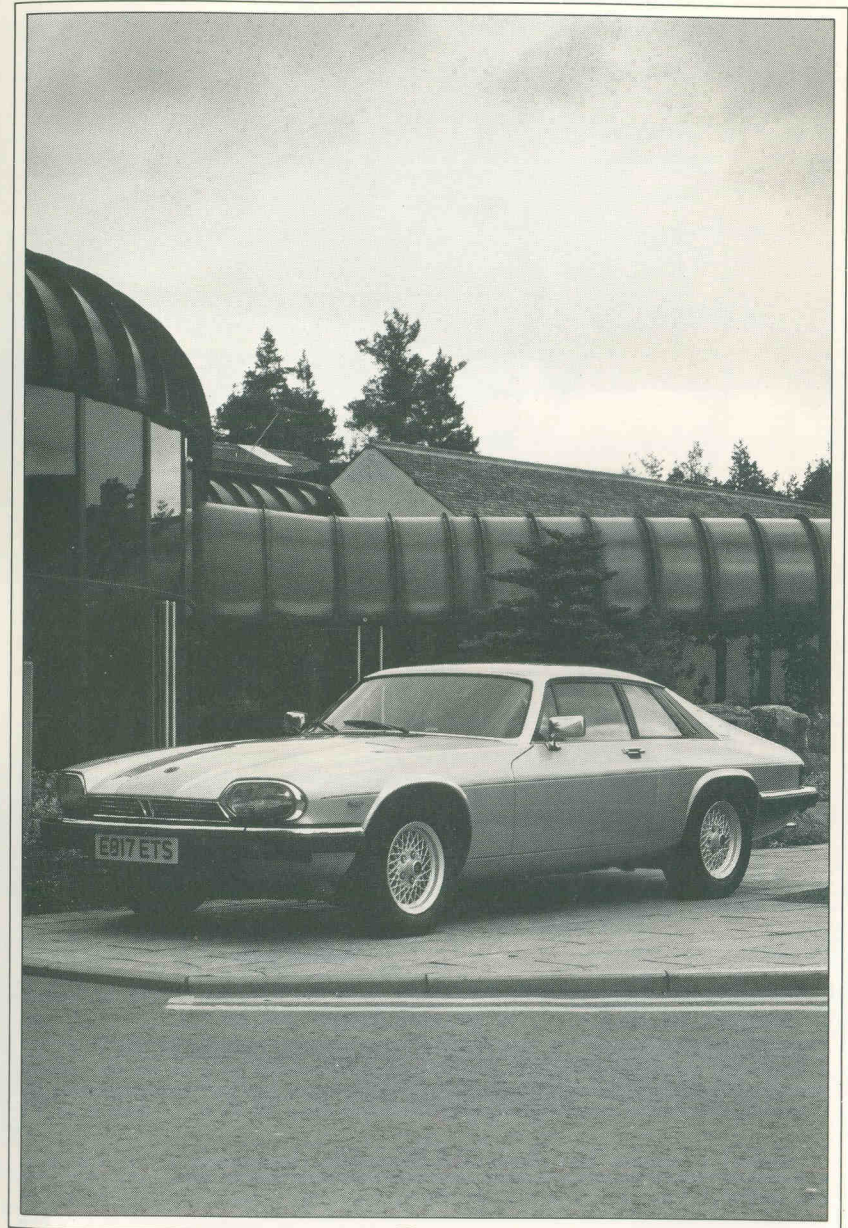
**Super executive coaches with  
videos, tables, hot and cold drinks,  
w.c. etc.**

For information or quotations please contact:-

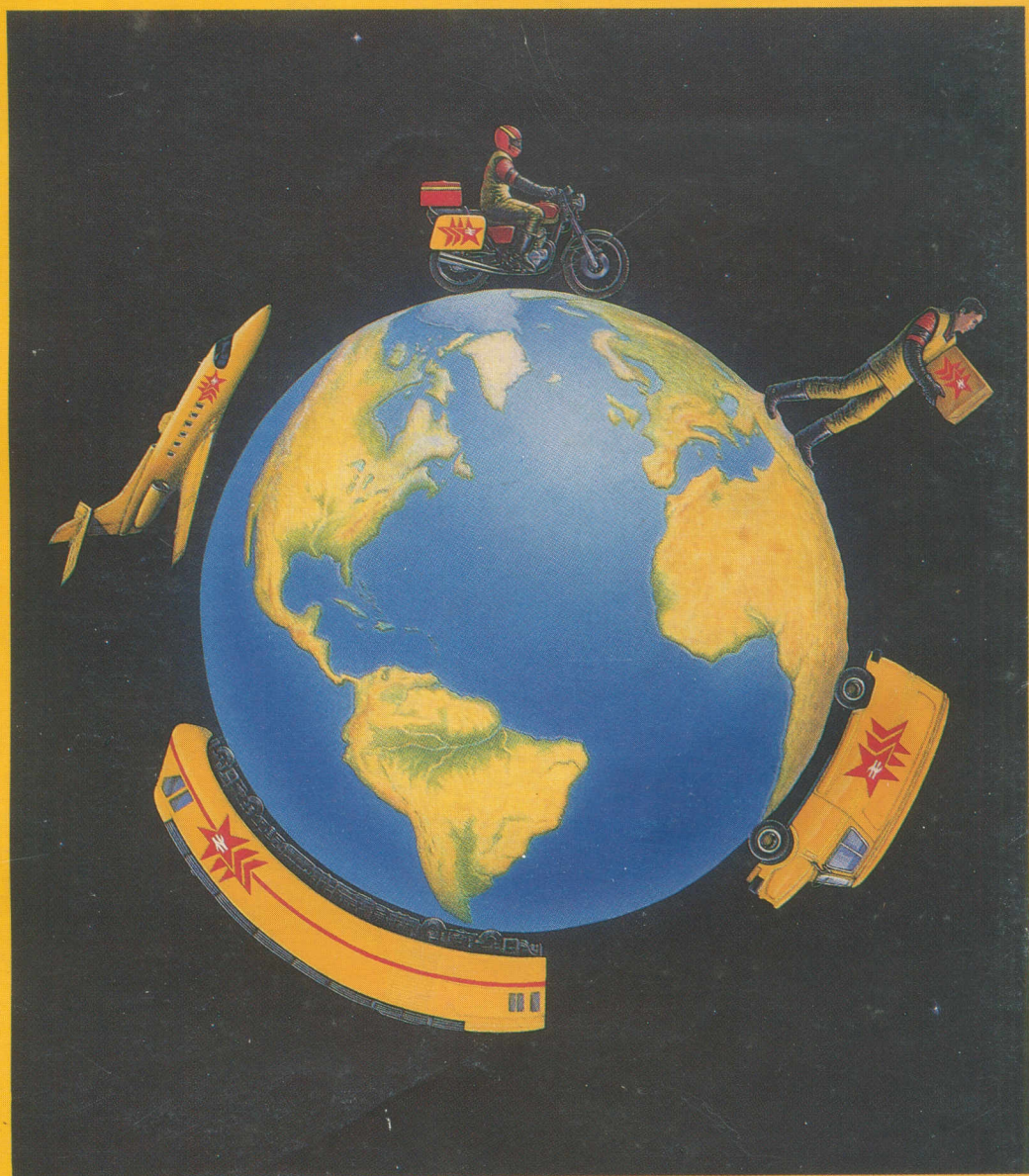
**CAPITAL COACHES LIMITED**

**Tel: 01-897 6131**

**Telex: 296745**



  
**JAGUAR**  
XJ-S



**Red Star now deliver around the world.**

For door to door delivery, by air, worldwide, phone 0345 00 00 00.

