

*The* **BLUE &  
BLACKS**

# CARDIFF RUGBY CLUB



SPONSORED BY



**AT&T**

AT THE CARDIFF ARMS PARK THIS EVENING...

# PONTYPRIDD

THURSDAY, DECEMBER 22nd, 1994

KICK-OFF 7.15 p.m.

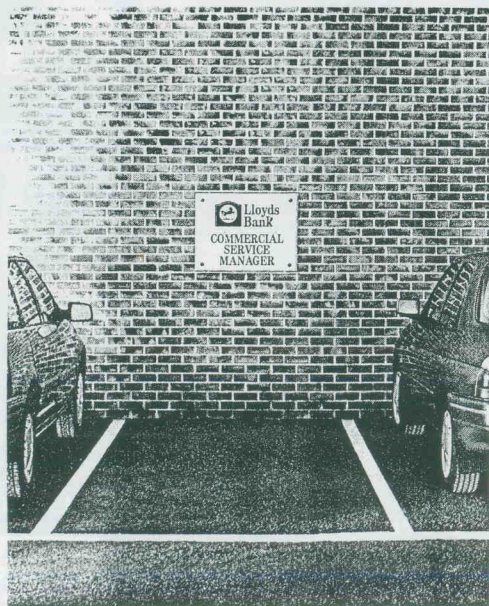
OFFICIAL MATCH PROGRAMME — £1

VOL. 4 No.10





# Some of our best managers are a complete waste of space.



They're known as Relationship Managers. And they prefer to spend their time at your office, rather than theirs.

That way, they reach a much better understanding of your business.

They can give you practical advice on management of surplus cash, risk management, credit control and on selecting the right type of funding.

Lloyds Bank Commercial Service has 250 specialist commercial teams providing a local service to help businesses grow and prosper.

They're hand-picked for their proven ability to meet challenges, get on with people and to provide the right solutions to a wide variety of business problems.

Get in touch with Bernard Humphreys, your local Lloyds Bank Relationship Manager on Cardiff 728860.



**Lloyds Bank  
Commercial Service**

THE THOROUGHbred BANK.

Lloyds Bank Commercial Service is available to businesses with a turnover between £1 million and £50 million. Full details of credit services mentioned in this advertisement are available on request. Security may be required. Lloyds Bank Plc is a member of IMRO. Lloyds Bank Plc, 71 Lombard Street, London EC3P 3BS.



## Cardiff v. Pontypridd

THURSDAY, DECEMBER 22nd, 1994  
KICK-OFF 7.15p.m.

"THIS IS not the end," said Winston Churchill under very much graver circumstances. "It is not even the beginning of the end. But it is, perhaps, the end of the beginning."

Mr Churchill, as he then was, spoke of course after the battle for Egypt in 1942 and it would be clearly wrong to associate the words quite literally with this evening's visit of Pontypridd in a mere Heineken League match.

Yet in terms of the chase for the championship, they are apt enough. A win for Cardiff against their closest challengers would put substantial daylight between the table-toppers. A win for Pontypridd could mark the end of the beginning of their most successful season.

To say that a match before Christmas is a decider is premature to say the least in a season that has produced so many surprises and will surely bring more. Vital as it is then, it is scarcely a matter of life and death and, in welcoming the players, officials and vociferous supporters of the Pontypridd club down the A470 to the Arms Park this evening, we hope sincerely that there is sufficient seasonal spirit of goodwill to bring also an evening of rich and skilful entertainment.

"A lot of eyes will be on the Arms Park," Ponty captain Nigel Bezani has said, "and if the two sides produce a Christmas cracker, it will provide a big fillip for Welsh rugby."

It will indeed — and it will surely guarantee a talking point throughout the holiday period.

With that in mind, just a reminder about the Boxing Day fare. The Cardiff Institute will be bringing almost their full side to the Arms Park — only one or two students will be away from the area, apparently — and, fortified not just with the Christmas spirit but also by a splendid 32-3 over Second Division Llandovery in the SWALEC Cup on Saturday, will certainly be worth taking the fresh air to watch.

Before then, however, the Chief Executive, the Chairman, the captain, players and all connected with Cardiff RFC wish all supporters and visitors a very Merry Christmas and a Happy and Prosperous New Year.

~~~~~ D.G.

CARDIFF RUGBY  
FOOTBALL CLUB

## OFFICERS

### Chairman

Mervyn John

### Hon. Secretary

John D. Nelson

### Hon. Fixture Secretary

John Evans

### Committee

B. Bennett, S. Blackmore,  
S. N. Cannon, T. J. Charles,  
M. Childs, G. Davies,  
I. H. Eidman,  
P. H. Goodfellow, R. J. Lakin,  
P. Manning, R. J. Newman,  
J. D. O'Donnell, I. Robinson,  
A. D. Williams

### Vice Presidents

W. H. Wilkins, L. Williams,  
C. D. Williams, J. E. Davies,  
C. T. Howe, D. J. Hayward,  
P. Nyhan, B. Mark,  
A. J. Priday, C. H. Norris

### Club Doctors

Mr. J. Fairclough,  
Mr. B. Rees, Dr. Roger Evans,  
Dr. J. Naysmith, Dr. H. Evans,  
Dr. K. Young,  
Dr. Richard Evans

### Club Dentist

Mr. W. G. L. Price

### Captain

Michael Hall

### Coaching Organiser

Alex Evans

### Club Physiotherapist

Jane Parker

### Commercial Department

Chief Executive:  
Gareth Davies  
Tel: 383546

Commercial Manager:  
Tina Tew  
Tel: 382006



**DRAUGHTFLOW™  
SYSTEM**

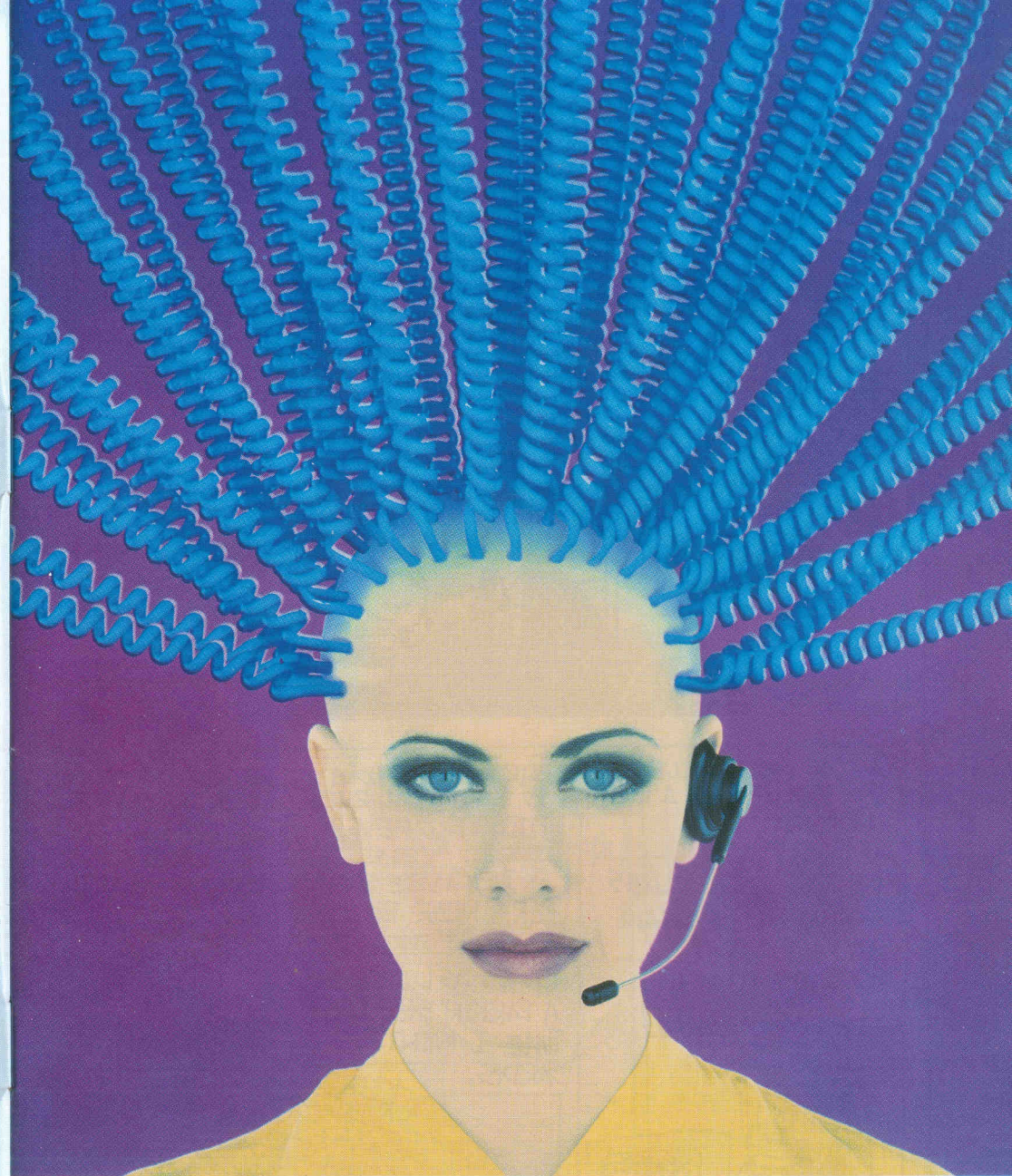


# THE NEXT BEST THING TO ENJOYING S.A. IN THE BAR

S. A. Best Bitter now available  
with Draughtflow™ Technology



*brewers of fine ales*



To find out how our Call Centre really is versatile enough to handle 5 to 5,000 agents, call **071 379 3797**.



GLOBAL BUSINESS COMMUNICATIONS SYSTEMS



# Ponty an' Pop

The  
Continuing  
Story  
Of  
Aberflyarff  
Folk  
**GREN**

AS THERE IS NO GAME AT ROYAL ABERFLYARFF TONIGHT PONTY AN' POP HEAD FOR THE ARMS PARK FOR THE PONTY GAME.

AN' HAVIN' MASSNE GATE FIGURES ISN'T NOT WE DO IN **REAL RUGBY CLUBS**.

I **HATE** CARDIFF. IT'S NOT A **REAL RUGBY CLUB** ISSIT?

NO-IT'S ALL HOSPITALITY BOXES AN' PRE-GAME **DRINKIES**.

D'YOU KNOW, CARDIFF GOT **MORE PEOPLE** MANNIN' THEIR HOT DOG VANS...



THAN WE HAD THROUGH O'WER GATES **ALL** LAST SEASON.

AND THE CARDIFF PLAYERS ARE JUST AS BAD. ALL **VERY** INTELLIGENT OXFORD AN' CAMBRIDGE TYPES.

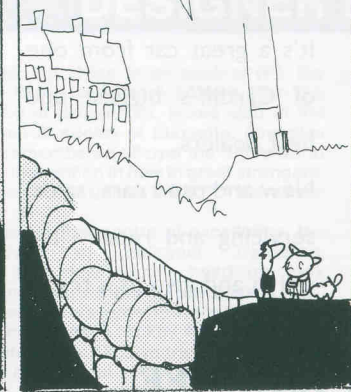
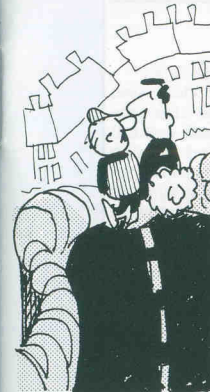
AYE CARDIFF'S OUT OF TOUCH WITH THE **REAL RUGBY** WORLD.

WHILE US **REAL RUGBY CLUBS** ARE LUCKY TO HAVE SOME PLAYERS EXPELLED FROM COMP AN' ON **PROBATION**.

ANOTHER THING, 'AVE YEW NOTICED THAT **PONCY STRIP** CARDIFF WEAR?

I'VE NOTICED - YOU MEAN IT'S WASHED **EVERY WEEK**?

NOT **NATURAL** ISSIT?



AN' THE WHOLE CLUB IS CONTROLLED BY A RUGBY **SUPREMO**.

WE **REAL RUGBY CLUBS** ARE LUCKY IF WE CAN ATTRACT A **BENT** ACCOUNTANT ON TO THE COMMITTEE!



NEWPORT RFC BID FOR VINNY JONES READ QUIDNUNG

GREN 22.12.94

FAIR PLAY FOR PONTYPRIDD. THEY **DO** TRY TO BE A **REAL RUGBY CLUB**. THEY LET THE PITCH BECOME A **MUD FLAT** NOW AN' THEN.

AN' THEY MAKE SHOWER YEW CAN **NEVER** PARK NEAR THE GROUND.

OH I WAS LUCKY WITH A PARKIN' SPOT **LAST** TIME I WENT TO **SARDIS**.

WHERE D'YOU PARK 'EN?

**TONYPANDY**.



NO IT'S NO GOOD, I CAN'T SAY I **LIKE** THE CARDIFF SET UP. IT'S ALL 'REMEMBER '53. HOSPITALITY BOXES, DRINKIES, COCKTAILS, AN' **LOTTERY**... PLAYIN' CONSISTANTLY GOOD RUGBY...

THE CLUB'S **VERY** WELL RUN - AND THE PLAYING AREAS AND STANDS ARE **SUPPERB**.



AYE **EXACTLY!** THE **MAJIC** ISN'T THERE EH?





# WE PUT THE *car* IN *cardiff* R.F.C.

It doesn't take a lot of Gaul to see why Cardiff Rugby Football Club gives away a Renault 5, supplied by Renault Cardiff, every month\*. It's a great car from one of Cardiff's biggest and best dealers. New and used cars, sales, servicing and repair. Just call in and give us a try!

## RENAULT CARDIFF

A MEMBER OF THE RENAULT RETAIL GROUP



\* You too could have the opportunity of winning a Renault 5 each month. Simply join the Cardiff Rugby Lottery today. Telephone: 0222 382006 for details.

## GUEST APPEARANCE

PETER JOHNSON, presenter of Good Morning Wales, broadcaster and writer is, despite his charm, sense of humour and general sophistication, a Pontypridd fanatic. He was, however, willing to confess to a certain nostalgia about the Arms Park as opposed to his own club's...

## DESIGNER BOMB SITE

EVENING ALL. Nice to be back at HQ, the only club in Wales with more blazers than the arsonists wing at Broadmoor. Home also of the Stanley Bowes Academy of Etiquette, now alas defunct, but remembered all over the rugby world for its cheery instruction in how to greet strangers. "Always say welcome, unless the b\*\*\*\*\*s are from Newport".

Home too of that centre of excellence, the Baxter School of Ballroom Trampling. "Remember, foot down firmly, head up, look bewildered and smile as their trainer passes you."

Neither should we forget the pioneering work of that old firm Robinson Hickey Associates, with their corporate motto: "You've tried the rest, now get thumped by the best". The club reputation is assured.

Cardiff's modest assumption of the title of the "greatest rugby club in the world" makes all visitors to the Arms Park determined to show the city slickers a thing or two.

After all we are Valley boys. Underpaid and overworked sons of toil taking on the stockbroker belt. As Stan might have said, "Cobblers".

Cardiff has always thrived on drawing in players from everywhere, especially the valleys, though the odd Cardiffian has pulled on the black and blue hoops. I played here myself in Cardiff colours on this very pitch, though you need a long memory to cope.

The last time must have been 1966, when the great socialist Chairman Will II Son brought home the Eurovision song contest and the World Cup in the space of weeks.

There've been a few changes since then. Those post things must make fielding at deep square leg a bit difficult and the outfield could do with a good cut. But the scoreboard is much improved. You see, when I remember the little Arms pitch, they were playing cricket on it.

The cricket and rugby branches of the athletic club used the home dressing rooms in the old North Stand. As a small boy, I would watch the square from the holy of holies, in a room used by legends of sport for years. Glamorgan cricketers, Cardiff and Wales rugby legends. It was heady stuff. You could smell the history as strongly as the linseed and the liniment.

In that room I picked up my most treasured

possession, Bleddyn's bootlace.

In that room I was told about Cliff Morgan's passionate team talks, particularly severe on the Harlequins apparently. "They think that William Webb Ellis was a bloody Harlequin," he was fond of saying. Motivation of the highest order.

And in that room I once instructed the grand daughter of an England Test cricketer in the gentle art of lacing on a wicketkeeper's box. As she strode into the outfield for a knock-around with her protector strapped outside her skirt, a passing group of Seventh Day Adventists taking a short cut via the cricket gave her a rousing welcome.

I spent most summer Saturdays and Sundays somewhere on the old ground. I'd been carried around in my father's cricket bag as a baby, and when I started to play myself it was nice to be able to learn in such superb surroundings.

I never thought anything of it at the time, but as I travelled the cricket grounds of Wales, it was clear that not everyone was so lucky. When I played through a June snowstorm on the steppes of Brynmawr many years later, it began to dawn on me that there was something to be said for having a father who only wanted to play for the best club around.

Tonight we have the best clubs around squaring up in what Greavesie would undoubtedly call a real six-pointer. The outcome of the Heineken League season may well depend on tonight's result.

But we in the People's Republic have no need of such spurs to effort. After all when you couldn't get a fixture with the "worlds greatest club" for years, it's nice to be acknowledged as the only real contenders to beat them.

When you don't have any millionaire ex-players (Tommy's still working on it) to help out, it's nice to know that there is a business community in your area prepared to help sustain your challenge.

Unlike the Scarlets, we have no plans to dig up the car park to build a supermarket. We don't need to. The council have dug it up for us. At the moment we play in the middle of a designer bomb site, but things are shaping up.

Next season, footloose players will find that, courtesy of the new relief road, deciding to go to Treorchy "for the challenge" will be a lot easier.



## MISCELLANY... reporting on news

### CARDIFF v. PONTYPRIDD

**SURPRISINGLY**, perhaps, Cardiff have won seven of the nine Heineken League matches played between the clubs with Pontypridd winning twice.

In 1990-91, Cardiff won 21-20 at Pontypridd and 25-7 at home. The following season, Cardiff won 19-12 at home and lost 17-12 at Sardis Road. Cardiff won both matches again in Season 1992-93, by 37-3 at home and 6-3 away.

Then last season Cardiff won 24-17 at Pontypridd only to lose 15-10 at the Arms Park. This September, Cardiff won 12-6 at Sardis Road through Mike Rayer's three penalties and a drop goal.

Neil Jenkins, incidentally, has scored 76 of the 100 points scored by Pontypridd against Cardiff in the leagues.

Overall, since the clubs first met way back in November 1878, they have played each other on 78 occasions with Cardiff winning 55, Pontypridd 19 and there have been four draws. Total points for, 1266 with 672 against.

### YOUTH TO THE FORE

CARDIFF Youth remain unbeaten to date in their 14 matches. And to give some idea as to the exciting method of approach adopted by the coaches and their team, they have scored 112 tries during those games.

Through to the quarter-finals of the Welsh Youth Cup as the result of the sad inability of Swansea to produce a side the week before last, the youngsters have inevitably attracted the attentions of the Welsh selectors for their age groups.

Out-half and captain Gafyn Cooper was one of nine who had Welsh Youth trials. The others were Matthew Green (No 8), hooker Jason Kemble (last year captain of the Wales Under 18s), Jamie Ringer (son of Paul), Steve Gardner, Andrew Winterbottom and his fellow prop Andy Booth, Andrew Fowler and wing Robert Saddler who scored five tries against

## and views from CARDIFF ARMS PARK

Taibach in the last round of the Youth Cup.

On duty with the Welsh Youth will be Andrew Grabham and Richard Field who both toured Australia last summer with Welsh Schools, along with Matthew Davey while Andrew Driscoll is on the bench for the Wales Youth when they play the Welsh Schools at the Gnoll next Wednesday.

Of those 112 tries scored by the Cardiff Youth team, 43 have been scored by forwards and 69 by backs with Robert Saddler leading the way with 14. Andrew Driscoll has scored 10, Lee Abdul and Andrew Fowler nine with the redoubtable Phil Booth, centre John Colderley and Rhys (son of Gareth) Edwards all on eight.

In total, Gafyn Cooper leads the way with 135, made up of four tries, only six penalties (which gives further clue to the running approach), a drop goal and 47 conversions.

All in all, a splendid effort so far — and well worth turning out to see if you have the chance.

### ...AND EVEN YOUNGER

**EVEN FURTHER** down the age groups, the match you may be watching even as you read this is between the Cardiff and Pontypridd Under 11s for the Les Spence Memorial Trophy.

Weather-permitting, the match was to go ahead as a curtain-raiser to this evening's main event.



## SWALEC CUP

CARDIFF AND PONTYPRIDD both negotiated safely last Saturday's Fourth Round SWALEC Cup-ties against Merthyr and Newport respectively and duly go forward to the Fifth Round to be played on January 28, 1995.

Ponty's reward was another home tie against, curiously, another first division side, Pontypool while Cardiff travel to Pyle.

One of the more surprising results on paper at least was the comfort with which Cardiff Institute, who come to the Arms Park on Boxing Day, beat Second Division Llandovery. The 32-3 victory was special



**LAST SATURDAY's** reference by Dai Hayward in his Guest Appearance column to Billy Spiller, who played both rugby for Cardiff and cricket for Glamorgan, produced a few clubhouse reminiscences and discussions.

How many others can you think of who have represented the club at one sport and the county at the other?

Two names which naturally came quickly were those of Wilf Wooller (above) and Maurice T Turnbull, who was so tragically killed during the last war.

Several other names cropped up of those who had played for other clubs — Tony Lewis, possibly the prime example — but there must surely be others with the Cardiff association.

Any offers, please? Let the Programme Editor know, care of the Commercial Department.

*"The nearest you lot will ever get to the front row at the Arms Park is at a U2 Concert"*



ADVERTISING • PUBLIC RELATIONS • TELEMARKETING • RECRUITMENT

9-11 The Hayes, Cardiff CF1 1NU Tel: 0222 388621

(continued on page 12)



## MORE MISCELLANY

(continued from p11)

### HOW TO SOLVE PRESENT PROBLEMS...

THE CHRISTMAS countdown is really on with only a couple of shopping days left.

A look at the Cardiff Collection in the club shop could solve a number of problems — either large or small, from key rings to shell suits, from baseball caps to polo shirts.

Mugs, tankards, autograph books, ties, purses, pennants, bobble hats, umbrellas... all can be seen in the Cardiff Rugby Football Club leisurewear and gift catalogue.

### ...BY WATCHING CARDIFF

AND THERE'S more... With the Heineken League hotting up, with several attractive friendlies ahead, it is not too late to think of a season ticket for a present.

A stand season ticket for all remaining home matches except cup-ties after



January 1 will now cost you £30 (£20 for pensioners and juniors) and an enclosure season ticket will cost £20 (£15 for pensioners and juniors).

They are available at the club offices.

indeed — and those with very long memories may remember a day in 1971-72 when we beat the then-named Cardiff Training College by the narrowest of margins in the Cup — 7-6.

They now have to travel to Tondy, of the Third Division.

The full draw is:

Pontypridd v. Pontypool; Swansea v. Abercynon; Nelson v. Newbridge; Ebbw Vale v. Old Illydians; Pyle v. Cardiff; Tenby Utd. v. Aberavon; Dunvant v. Tonyrefail; Builth Wells v. Bonymaen; Glynneath v. Llanelli; Morriston v. Neath; Whitland v. Mountain Ash; SW Police v. O. Penarthians; Penygraig v. Rhyl; Seven Sisters v. Blackwood; Tondy v. Cardiff Institute; Ystrad Rhondda v. Bridgend.

Ties to be played on January 28th, 1995.

### INSTITUTE INTERNATIONALS...

DID YOU realise that the Cardiff Institute,

attractive visitors to the Arms Park on Boxing Day, had produced more than 30 Welsh internationals over the years.

It has, of course, had a few names — Cardiff Training College, South Glamorgan Institute among others — and their impressive roll of honour has been joined most recently by Paul John, the former Cardiff player who will run out with Pontypridd this afternoon.

We'll be printing the full list of those internationals — and, arguably, another unique rugby record won by the Institute in Monday's programme.

"ROVER" TICKETS will be available for non-members at the Monday match, incidentally.

For just £3 non-members will be able to

(continued on page 15)

## QUIDNUNC'S COMPETITION

TO SET the Christmas spirits going Quidnunc this evening offers a competition for both sets of supporters to win a £15 gift voucher to be spent in the Cardiff Club shop.

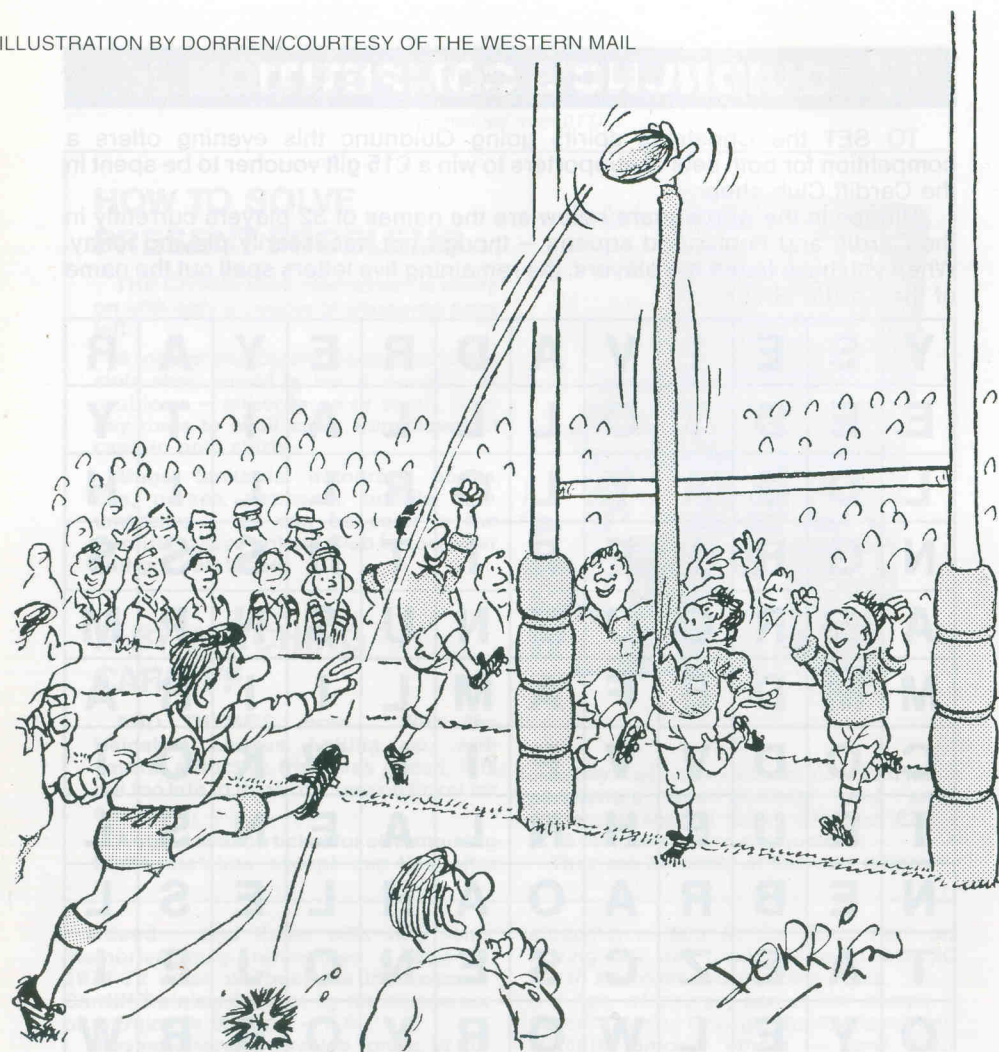
Hidden in the wordsquare below are the names of 32 players currently in the Cardiff and Pontypridd squads — though not necessarily playing today. When you have found the players, the remaining five letters spell out the name of the Cardiff coach.

|   |   |   |   |   |   |   |   |   |   |   |   |
|---|---|---|---|---|---|---|---|---|---|---|---|
| Y | S | E | I | V | A | D | R | E | Y | A | R |
| E | E | D | Y | O | L | L | L | A | I | T | Y |
| L | D | J | A | Y | L | O | R | L | L | I | H |
| N | G | R | I | F | F | I | T | H | S | S | S |
| A | E | R | O | O | M | N | U | S | N | P | M |
| M | M | D | E | F | A | M | L | I | I | R | A |
| C | O | D | V | V | P | I | L | W | K | O | I |
| I | R | U | E | H | N | L | A | E | N | S | L |
| N | E | B | R | A | O | A | H | L | E | S | L |
| T | A | E | Z | C | S | E | N | O | J | E | I |
| O | Y | E | L | W | O | R | Y | O | R | R | W |
| S | B | J | O | S | E | P | H | T | O | O | B |
| H | E | N | O | T | S | A | M | O | H | T | S |

### HOW TO ENTER

Write the names on a postcard — writing on it also your own name and address — and send it to Quidnunc, Cardiff Rugby Football Club, The Arms Park, Westgate Street, Cardiff. The winning entry will be the first correct list drawn from a hat during our home match with Swansea.





Heineken refreshes the parts  
other beers cannot reach.



SPONSORS OF WELSH CLUB RUGBY

## MORE MISCELLANY

(continued from p12)

### CHAIRMAN'S CHRISTMAS COMPETITION

CARDIFF RUGBY CLUB Chairman MERVYN JOHN is currently on holiday in America and will miss our Christmas matches — but he is entering the season of goodwill by offering a bottle of whisky (?bourbon) to the reader who can answer the following questions:

WHO IS CARDIFF'S HIGHEST POINTS SCORER SO FAR THIS SEASON?

WHO IS PONTYPRIDD'S HIGHEST POINTS SCORER SO FAR THIS SEASON?

WHAT WILL BE THE TEMPERATURE IN LAS VEGAS (where Mr. John will be) at 12 noon on CHRISTMAS DAY?

Answers, on a postcard please, to the Club offices...

watch the match from where they please — either stand or terrace.

And, as we have noted elsewhere, the Institute will be bringing almost their strongest side — which is currently running high in Division Four in their search for promotion, and is still in the SWALEC Cup.

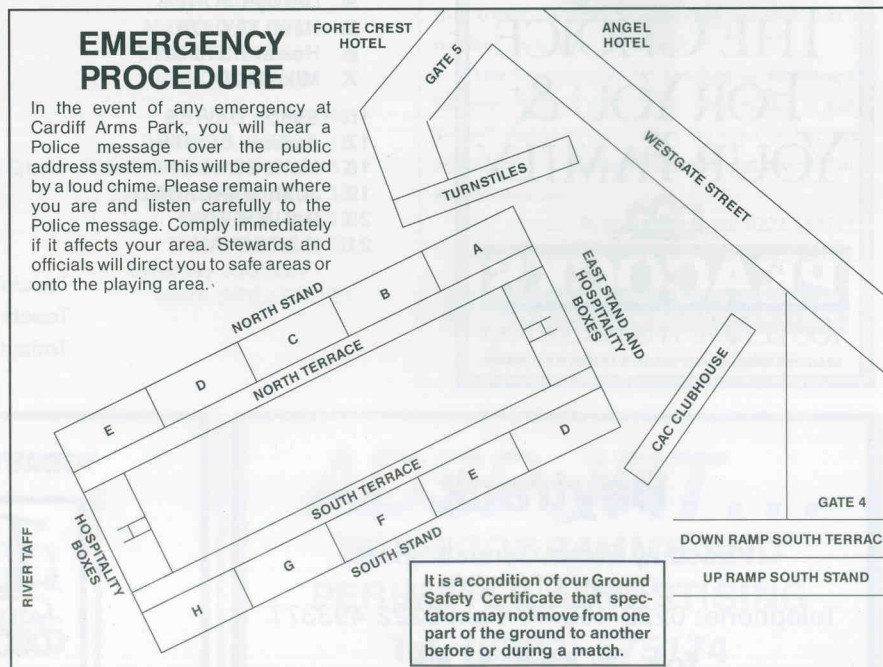
### MANY THANKS

A SPECIAL thank you today for the "guest" appearances in the match programme — to Peter Johnson, Good Morning Wales presenter and Pontypridd follower extraordinary, and to Gren, the South Wales Echo cartoonist, who brings his characters Ponty an' Pop exclusively and all the way from Royal Aberfylarff to sample this evening's festive fun. It's a one-off Cardiff special.


Gren's Rugby Addicts Calendar for 1995 is, incidentally, on sale at newsagents and bookshops and makes a splendid present.

### EMERGENCY PROCEDURE


In the event of any emergency at Cardiff Arms Park, you will hear a Police message over the public address system. This will be preceded by a loud chime. Please remain where you are and listen carefully to the Police message. Comply immediately if it affects your area. Stewards and officials will direct you to safe areas or onto the playing area.






 **HYDRO  
ALUMINIUM**  
Alupres


**From the Giant in the Valleys to  
The Giants on the Pitch**  
We are pleased to  
support **Cardiff RFC**  
**0222 867311**

 **HYDRO  
ALUMINIUM**  
Alupres

**PEACOCKS**



**YOU'LL LOVE  
THE CHOICE  
FOR YOU &  
YOUR FAMILY**



**PEACOCKS**

**YOU'LL LOVE THE PRICES TOO!**

BRANCHES THROUGHOUT WALES & STORES NATIONWIDE

## Cardiff

15. Chris JOHN
14. Steve FORD
13. Mike HALL (Capt.)
12. Geraint JOHN
11. Simon HILL
10. Adrian DAVIES
9. Andy MOORE
1. Mike GRIFFITHS
2. Jonathan HUMPHREYS
3. Lyndon MUSTOE
4. Stuart ROY
5. Derwyn JONES
6. Hemi TAYLOR
8. Howard STONE
7. Mike BUDD
16. Simon DAVIES
17. Andrew BOOTH
18. Mark BENNETT
19. John WAKEFORD
20. Dai JOSEPH
21. Huw BEVAN

Full Back  
Right Wing  
Right Centre  
Left Centre  
Left Wing  
Outside Half  
Inside Half  
Forwards



Replacements

Today's Referee:  
**Robert Yeman**

Touch Judge No.1: **Peter Young**  
Touch Judge No.2: **Lynn Davies**  
Today's GILBERT Ball Sponsor:  
**Peacocks Stores**

## Pontypridd

- Crispin CORMACK 15.
- David MANLEY 14.
- Jason LEWIS 13.
- Steele LEWIS 12.
- Owen ROBINS 11.
- Neil JENKINS 10.
- Paul JOHN 9.
- Nigel BEZANI (Capt.) 1.
- Phil JOHN 2.
- Andrew METCALFE 3.
- Greg PROSSER 4.
- Mark ROWLEY 5.
- Matthew LLOYD 6.
- Dale MCINTOSH 8.
- Richie COLLINS 7.

- FROM:
- Darren GIBBON 16.
  - Gavin JONES/Ceri THOMAS 17.
  - Leighton PHILLIPS 18.
  - Mark SMITH 19.
  - Nick JONES/ 20.
  - Lyndsey HARVEY
  - Mark SPILLER 21.

**Bank on us  
to be  
*Coöperative***

...you can depend on us to live up to our name.  
You can also depend on our fast, efficient service  
that treats you like an individual and not just a  
number on a bank statement.

The Co-operative Bank values its customers,  
however large or small in good times and in bad.  
So we'll always be here when you need us, because  
as one of our customers, you'll get more than  
you banked on!

For all your Business needs call 0222 664929.  
For all your Personal Banking needs call 0222 230552.

**The COÖPERATIVE BANK**

Why bank with one that isn't?

## Baytrack

1 Eastbay Close, Tyndall Street,  
Cardiff CF2 1BG  
Telephone: 0222 462777 Fax: 0222 493377  
**for VOLVO**

TODAY'S MATCH SPONSOR ....



**ADSPORT...**  
FOR PROGRAMME AND  
PERIMETER ADVERTISING

Tel: (0222) 575174  
Fax: (0222) 575176



*Official match ball for the 1993 World Cup Sevens*  
*Official match ball for the 1995 World Cup*



**James Gilbert (Rugby Footballs) Ltd.**

5, St. Matthews Street, Rugby CV21 3BY, England. Tel: Rugby (0788) 542426 Fax: Rugby (0788) 540795



## KNOW THE LAWS

sponsored by **MORGAN  
BRUCE**  
SOLICITORS

**J. E. MALCOLM THOMAS**  
raises – and answers – some  
questions about the cluttered  
midfield.



### AREAS OF REAL CONCERN

#### 1. Defenders "Fanning Out"

Midfields are becoming cluttered. Frequently defending sides will commit four or five players to the maul whilst the others will spread in midfield. Midfield clutter also increases the amount of midfield offside and decreases the amount of midfield space.

It is the referee's duty to ensure that midfield defenders are on side and they should consider positioning themselves, as per rugby league referees, on the non-ball winning side.

#### 2. "Slow Retreat"

In conjunction with players fanning out we often see players who are slow to retreat in defensive situations. This is being coached. If the referee considers the intent of the retreating player to be destructive then he should penalise.

#### 3. "Taking players out" – Obstruction

Referees need to be more vigilant in this area. It was highlighted in recent games involving the South Africans. Derek Bevan was alert to them taking players out in midfield, but in the international against Wales, they got away with it, in taking Welsh players out of the game as they followed up a 'Garry Owen'. Other teams have followed their tactics by allowing players to form a shield in front of their colleague waiting to catch an "Up and under".

This sinister obstruction must be dealt with firmly.

#### 4. Players arriving after a tackle

What can players, coaches and referees do to ensure that arriving players stay on their feet?

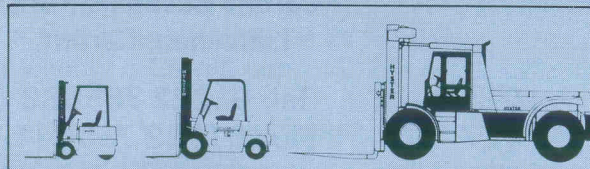
Coaches should encourage players to adopt the correct body position for engagement. Players should endeavour to stay on their feet. Referees must whistle quickly if the arriving bodies go to ground, and players who go to ground wilfully must be penalised.

### Capital Equipment from the Welsh Capital!

A Truck for every size of load –  
An Answer for every handling  
problem



**BARLOW**  
handling



CONTACT COLIN HOWE ON CARDIFF 454900 To learn about the finest and widest range of lift trucks and service facilities available in South Wales.



# Canon

(South Wales)

*Official suppliers to  
Cardiff Rugby Football Club  
and  
Cardiff World Trade Center*

World market leaders in:  
**Photocopiers**  
**Facsimile**  
**Colour Copiers**  
**Electronic Filing Systems**

For further information contact:  
**MICHAEL BUDD or IAN NORTON**

at

**Canon (South Wales)**  
**12 Lambourne Crescent**  
**Cardiff Business Park**  
**Llanishen, Cardiff**

**Tel: 01222 755888**  
**Fax: 01222 755844**



## YOUR CHANCE TO SPONSOR A CARDIFF PLAYER



**JONATHAN HUMPHREYS**  
...is sponsored by



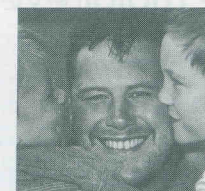
South Wales U.K.  
Mechanical maintenance,  
installation, fabrication,  
pipework, machining, labour  
hire.  
Contact John Black-  
borow or Ray Cummins  
on 0633-276533.



**ADRIAN DAVIES**  
...is sponsored by

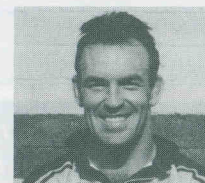
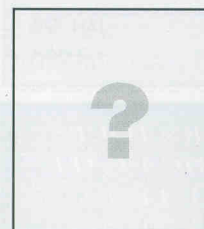
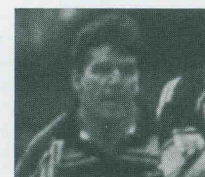
**Chesterton**

International Property  
Consultants. Contact  
Adrian or Andy Martin  
on Cardiff 640111.



**MIKE GRIFFITHS**  
...is sponsored by  
Stephens the Joke  
Shop, suppliers of  
Comic Props.

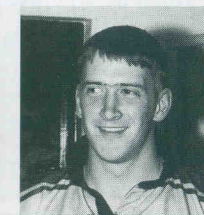
**MIKE BUDD**  
...is sponsored by  
**CANON LTD.**,  
the business equip-  
ment suppliers.



**HOWARD STONE**  
is sponsored by  
Daniel and Laura  
Watkins



**ANDY MOORE**  
...is sponsored by



**OWAIN THOMAS**  
...is sponsored by



**Chartered Trust plc**

## HOW MUCH? AND HOW TO SET ABOUT IT...

- ★ £500 to sponsor a Cardiff international cap.
- ★ £400 to sponsor a senior player capped by Cardiff.
- ★ £300 for a player without a Cardiff cap.

**A board at the entrance to the clubhouse gives up-dated  
details of players and their sponsors.**

**Contact Andy Moore on 887655 or Adrian Davies on 640111.**



SPORTS TRAVEL AT ITS BEST

# GOING ON TOUR?

Mike Burton Sports Travel organise tours for:

- Schools, Colleges and Universities
- Club and Representative Sides in both Cricket and Rugby

Our advice is free and our knowledge extensive!

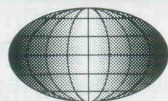
## SUPPORTERS' TOURS

Some major events for your diary

|                                                       |                     |
|-------------------------------------------------------|---------------------|
| BARBARIANS V SOUTH AFRICA - DUBLIN                    | 03 DECEMBER '94     |
| ENGLAND ASHES TO AUSTRALIA                            | DEC '94 - JAN '95   |
| ENGLAND V IRELAND - LANSDOWNE ROAD                    | 21 JAN '95          |
| FRANCE V WALES - PARIS                                | 21 JAN '95          |
| SCOTLAND V WALES - MURRAYFIELD                        | 04 MAR '95          |
| CATHAY PACIFIC HONG KONG SEVENS                       | 25/26 MAR '95       |
| <b>RUGBY UNION WORLD CUP - SOUTH AFRICA</b>           | <b>MAY/JUNE '95</b> |
| GB RUGBY LEAGUE V AUSTRALIA SERIES                    | OCT/NOV '95         |
| WEMBLEY • LEEDS • OLD TRAFFORD                        |                     |
| ENGLAND CRICKET INAUGURAL RETURN TOUR TO SOUTH AFRICA | JAN '96             |
| GB RUGBY LEAGUE TOUR TO AUSTRALIA                     | 1996                |

FOR THE MOST COMPETITIVE SUPPORTERS TOURS  
TO THE 1995 WORLD CUP IN SOUTH AFRICA CALL  
THE MIKE BURTON SPORTS TRAVEL OFFICE

**(01452) 419666**



**MIKE BURTON**

SPORTS • TRAVEL



BASTION HOUSE • BRUNSWICK ROAD • GLOUCESTER • GL1 1JJ • ENGLAND  
TELEPHONE: (0452) 419666 MULTI • FAX: (0452) 527500

**Panasonic**  
**Technics**  
Centre

Official Sponsors of



**Panasonic**  
**Technics**  
Centre

BRANCHES AT:

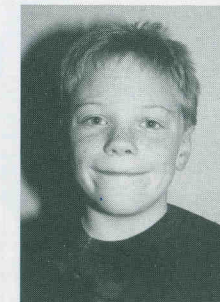
49 Queens Arcade, CARDIFF Tel: (01222) 373100

16/18 Cambrian Road, NEWPORT Tel: (01633) 222232 21 Quay Street, HAVERFORDWEST Tel: (01437) 760101

## A HAPPY CHRISTMAS TO EVERYONE!

### TODAY'S MATCH MASCOT

... is GAVIN WALTERS  
of Tongwynlais, who  
plays for Llandaff  
Under 11s and whose  
favourite Cardiff  
player is Mike Rayer.



### THE JUNIOR B & B's CHRISTMAS PARTY..

...is being combined this year  
with a New Year's Party because  
of the way the fixture list has  
worked out and it will be held on  
the day of the home match with  
Swansea on Saturday, January 7.

### IT'S NOT TOO LATE...

...to book in for our special away  
trip to Llanelli on Saturday,  
February 4, when after the Cardiff

match at Stradey Park and an overnight stop, we'll be taking part in a tournament on the  
Sunday at Haverfordwest. See Steve Cannon today if you're going.

### CAN YOU NAME THESE HEINEKEN LEAGUE RUGBY TEAMS?



TODAY'S competition is  
sponsored by  
**BILL SWITCHGEAR  
LIMITED.**

B B B B B

B B B B B



IF

### HAVE YOU A FAVOURITE JOKE?

Please send in your best jokes to  
the JBB's JOKES SECTION.

**-BILL**

**BILL SWITCHGEAR LIMITED**

ASTON LANE, PERRY BARR, BIRMINGHAM B20 3BT  
TEL: 021-356 6001 FAX: 021-356 1962 TELEX 339988

Contact: **GRAHAM SILLETT** on 0222 797601



# Heineken

## LEAGUE TABLES

### First Division

|               | P  | W  | D | L | T  | Pt |
|---------------|----|----|---|---|----|----|
| Cardiff ..... | 12 | 11 | 0 | 1 | 46 | 22 |
| Pontypridd .. | 11 | 9  | 0 | 2 | 27 | 18 |
| Bridgend ..   | 12 | 7  | 1 | 4 | 35 | 15 |
| Swansea ..    | 12 | 7  | 0 | 5 | 26 | 14 |
| Neath .....   | 12 | 6  | 2 | 4 | 13 | 14 |
| Treorchy ..   | 12 | 5  | 0 | 7 | 20 | 10 |
| Dunvant ...   | 11 | 4  | 1 | 6 | 18 | 9  |
| Llanelli* ... | 11 | 5  | 0 | 6 | 24 | 8  |
| Abertillery . | 12 | 4  | 0 | 8 | 17 | 8  |
| Newbridge .   | 12 | 4  | 0 | 8 | 16 | 8  |
| Pontypool .   | 12 | 3  | 0 | 9 | 20 | 6  |
| Newport ...   | 11 | 3  | 0 | 8 | 9  | 6  |

\*Two points deducted for an illegally-large first-team squad.

### Second Division

|              | P  | W  | D | L | T  | Pt |
|--------------|----|----|---|---|----|----|
| Aberavon ..  | 12 | 10 | 0 | 2 | 35 | 20 |
| Abercynon .  | 12 | 8  | 0 | 4 | 25 | 16 |
| Ebbw Vale .  | 12 | 7  | 1 | 4 | 23 | 15 |
| Bonymaen .   | 11 | 7  | 1 | 3 | 20 | 15 |
| Tenby Utd. . | 12 | 7  | 0 | 5 | 17 | 14 |
| SW Police .  | 11 | 6  | 1 | 4 | 26 | 13 |
| Cross Keys . | 11 | 5  | 0 | 6 | 11 | 10 |
| Narberth ..  | 12 | 3  | 2 | 7 | 19 | 8  |
| Llandovery . | 10 | 4  | 0 | 6 | 13 | 8  |
| Maesteg ...  | 11 | 3  | 1 | 7 | 13 | 7  |
| Llanharan .  | 11 | 3  | 0 | 8 | 17 | 6  |
| Tondu .....  | 12 | 2  | 1 | 9 | 11 | 5  |
| Penarth .... | 11 | 2  | 0 | 9 | 11 | 4  |

## STATISTICS FROM Baytrack for VOLVO

### FIRST DIVISION RESULTS 1994-95



|             | ABERTILLERY | BRIDGEND | CARDIFF | DUNVANT | LLANELLI | NEATH | NEWBRIDGE | NEWPORT | PONTYPOOL | PONTYPRIDD | SWANSEA | TREORCHY |
|-------------|-------------|----------|---------|---------|----------|-------|-----------|---------|-----------|------------|---------|----------|
| ABERTILLERY | H<br>A      | 17-19    | 13-50   | 15-16   | 19-25    | 19-12 | 13-17     | 21-31   | 20-42     | 12-10      | 20-81   |          |
| BRIDGEND    | H<br>A      | 19-17    | 10-34   | 34-26   | 16-3     | 20-20 | 51-7      | 72-14   | 6-22      | 15-45      | 12-8    |          |
| CARDIFF     | H<br>A      | 50-13    | 50-20   | 27-10   | 29-6     | 37-9  | 45-8      | 51-0    | 12-4      | 13-17      | 18-15   |          |
| DUNVANT     | H<br>A      | 16-15    | 10-27   | 18-22   | 11-11    | 15-16 | 16-6      | 22-11   | 17-15     | 12-20      | 8-19    |          |
| LLANELLI    | H<br>A      | 25-19    | 3-16    | 8-28    | 22-19    | 10-20 | 29-3      | 15-12   | 20-32     | 35-23      | 16-23   | 0-16     |
| NEATH       | H<br>A      | 12-19    | 20-20   | 9-37    | 11-11    | 20-10 | 10-8      | 23-25   | 18-12     | 8-27       | 22-20   |          |
| NEWBRIDGE   | H<br>A      | 15-16    | 14-16   | 16-15   | 3-29     | 8-10  | 15-6      | 6-30    | 13-32     | 6-13       | 16-37   |          |
| NEWPORT     | H<br>A      | 31-21    | 7-51    | 6-19    | 12-15    | 25-23 | 6-15      | 29-17   | 11-17     | 21-20      | 13-12   |          |
| PONTYPOOL   | H<br>A      | 17-24    | 14-72   | 0-51    | 32-20    | 12-18 | 8-13      | 25-30   | 30-25     | 32-10      | 39-13   |          |
| PONTYPRIDD  | H<br>A      | 42-20    | 22-6    | 6-12    | 15-17    | 27-6  | 10-3      | 17-11   | 10-32     | 21-16      |         |          |
| SWANSEA     | H<br>A      | 45-15    | 17-13   | 23-16   | 18-27    | 32-13 | 16-9      | 20-21   | 10-32     |            |         |          |
| TREORCHY    | H<br>A      | 61-20    | 8-12    | 15-18   | 19-8     | 20-22 | 37-16     | 12-13   | 13-39     | 16-21      |         |          |

### Third Division

|                 | P  | W  | D | L  | T  | Pt |
|-----------------|----|----|---|----|----|----|
| Y'gynlais ....  | 13 | 12 | 0 | 1  | 25 | 24 |
| Caerphilly ...  | 12 | 10 | 0 | 2  | 26 | 20 |
| Blackwood ...   | 13 | 7  | 2 | 4  | 16 | 16 |
| Mt. Ash .....   | 12 | 7  | 1 | 4  | 33 | 15 |
| Kenfig Hill ... | 13 | 7  | 0 | 6  | 19 | 14 |
| Glam. W. ....   | 13 | 7  | 0 | 6  | 16 | 14 |
| Blaina .....    | 13 | 6  | 1 | 6  | 14 | 13 |
| Tredegar .....  | 12 | 6  | 0 | 6  | 19 | 12 |
| Builth W. ....  | 13 | 4  | 0 | 9  | 13 | 8  |
| Aberavon Q. .   | 13 | 3  | 2 | 8  | 5  | 8  |
| Tondu .....     | 12 | 2  | 1 | 9  | 11 | 5  |
| Pontypool U. .  | 13 | 1  | 1 | 11 | 16 | 3  |

### Fourth Division

|                 | P  | W  | D | L  | T  | Pt |
|-----------------|----|----|---|----|----|----|
| Whitland ....   | 12 | 10 | 0 | 2  | 29 | 20 |
| Pyle .....      | 13 | 9  | 1 | 3  | 30 | 19 |
| Cardiff Ins ... | 12 | 9  | 0 | 3  | 29 | 18 |
| St. Peter's ... | 12 | 7  | 0 | 5  | 27 | 14 |
| Rhymney ....    | 11 | 7  | 0 | 4  | 16 | 14 |
| Tumble .....    | 13 | 6  | 1 | 6  | 24 | 13 |
| Carm'then Q. .  | 11 | 6  | 0 | 5  | 23 | 12 |
| Vardre .....    | 13 | 5  | 0 | 8  | 9  | 10 |
| Glynnneath ...  | 11 | 4  | 1 | 6  | 13 | 9  |
| Oakdale ....    | 12 | 4  | 1 | 7  | 10 | 9  |
| Kidwelly ....   | 13 | 2  | 0 | 11 | 15 | 4  |
| Llantrisant ..  | 13 | 2  | 0 | 11 | 7  | 4  |

## Baytrack

1 EASTBAY CLOSE, TYNDALL STREET,  
CARDIFF CF2 1BG

for **VOLVO**

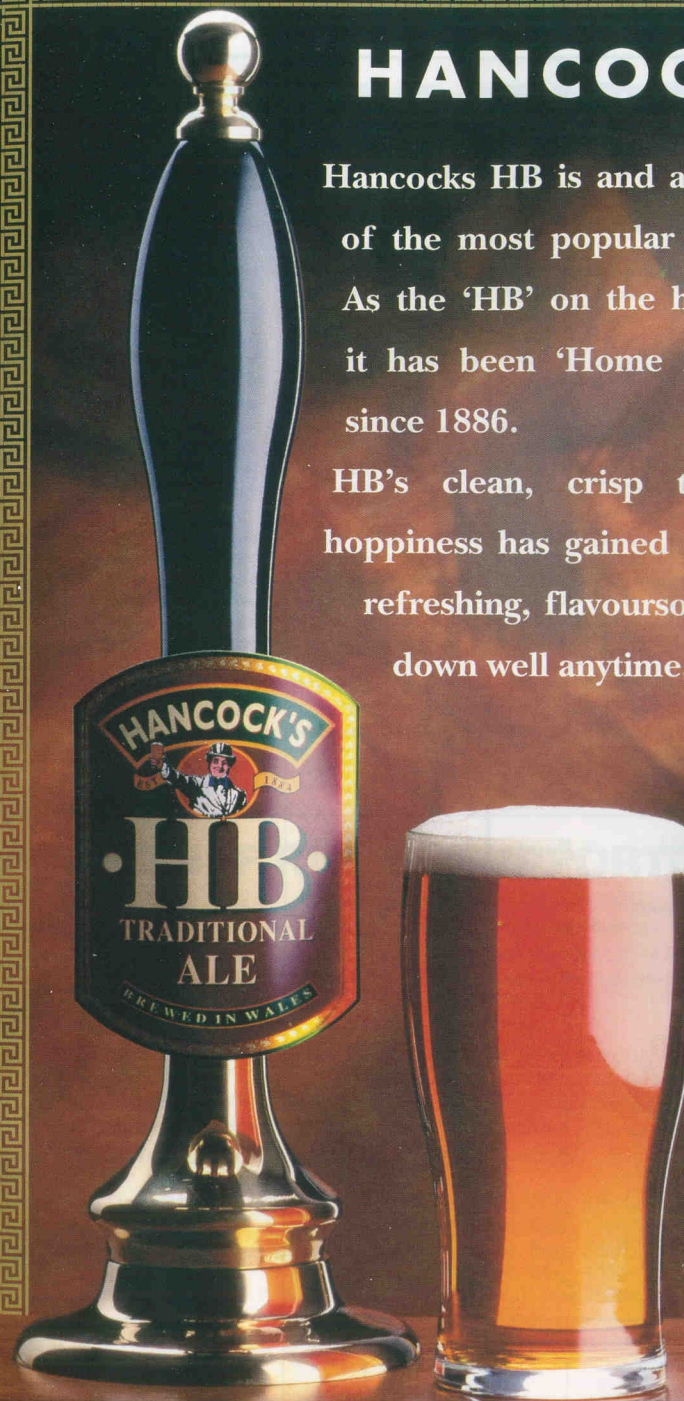
Telephone: (0222) 462777

Fax: (0222) 493377

# HANCOCKS HB

Hancocks HB is and always has been one of the most popular cask ales in Wales. As the 'HB' on the handpump suggests, it has been 'Home Brewed' in Cardiff since 1886.

HB's clean, crisp taste and delicate hoppiness has gained it a reputation as a refreshing, flavoursome pint which goes down well anytime.





# CARDIFF R.F.C. 1st XV

| DATE           | OPPONENTS                 | F-A     | 15                           | 14                     | 13                    | 12                        | 11                       |
|----------------|---------------------------|---------|------------------------------|------------------------|-----------------------|---------------------------|--------------------------|
| AUGUST 1994    |                           |         |                              |                        |                       |                           |                          |
| Sat. 27        | BRIDGEND(L)               | H 50-20 | M. Rayer (1T)                | S. Ford (2T)           | A. Palfrey            | J. Hewlett (1T)           | S. Hill                  |
| SEPTEMBER 1994 |                           |         |                              |                        |                       |                           |                          |
| Sat. 3         | PONTYPRIDD(L)             | A 12-6  | M. Rayer (3P, 1DG)           | S. Ford                | M. Hall               | J. Hewlett                | N. Walker                |
| Thu. 8         | NEATH(L)                  | H 37-9  | M. Rayer (1T, 3C, 2P)        | S. Ford (1T)           | M. Hall               | C. Laity                  | S. Hill (1T)             |
| Sat. 10        | Pontypool                 | H 29-16 | N. Stork                     | O. Thomas              | A. Palfrey (C. Laity) | P. Wintle                 | N. Walker (2T) (P. Agar) |
| Fri. 16        | Newport                   | A 13-20 | S. Davies                    | G. Lewis               | C. Laity              | J. Hewlett                | N. Walker                |
| Sat. 24        | SWANSEA(L)                | A 13-17 | M. Rayer (1C, 2P)            | S. Ford (1T)           | M. Hall               | C. Laity                  | S. Hill                  |
| OCTOBER        |                           |         |                              |                        |                       |                           |                          |
| Sat. 1         | LLANELLI(L)               | H 28-8  | M. Rayer (1P)                | S. Ford (1T)           | M. Hall               | C. Laity                  | S. Hill                  |
| Sat. 8         | Cambridge University      | A 67-23 | N. Stork (1T)                | S. Ford (5T)           | S. Davies (1T)        | P. Wintle (1T) (G. Baber) | G. Lewis                 |
| Sat. 15        | TREORCHY(L)               | A 18-15 | M. Rayer (1C, 1P) (A. Booth) | S. Hill (C. John)      | M. Hall               | C. Laity                  | N. Walker                |
| Sat. 22        | South Africa (Nat. Stad.) | H 6-11  | C. John (1P)                 | S. Ford                | M. Hall               | C. Laity                  | N. Walker                |
| Sat. 29        | PONTYPOOL(L)              | H 51-0  | C. John                      | S. Ford (1T)           | G. John               | C. Laity (1T)             | S. Hill (2T)             |
| NOVEMBER       |                           |         |                              |                        |                       |                           |                          |
| Wed. 2         | Penarth                   | A 42-17 | J. Westwood (2T, 1C, 1P)     | N. Stork               | S. Davies (1T, 1C)    | P. Wintle                 | A. Hurford (1T)          |
| Sat. 5         | ABERTILLERY(L)            | H 50-13 | C. John (6C, 1P)             | N. Walker (J. Hewlett) | S. Davies             | C. Laity                  | S. Hill (3T)             |
| Tue. 8         | Gloucester                | H 20-17 | J. Westwood (2C, 2P)         | N. Stork               | S. Davies             | P. Wintle                 | G. Price                 |
| Sat. 12        | DUNVANT(L)                | A 27-10 | J. Westwood (G. John)        | S. Hill                | M. Hall (2T)          | C. Laity                  | S. Ford                  |
| Sat. 19        | NEWBRIDGE(L)              | H 45-8  | C. John                      | S. Ford (2T)           | M. Hall (1T)          | G. John                   | S. Hill                  |
| Thu. 24        | The Pirates               | H 86-13 | N. Stork (1T)                | G. Price (A. Evans)    | P. Wintle (4T)        | C. Laity (4T)             | M. Payne                 |
| DECEMBER       |                           |         |                              |                        |                       |                           |                          |
| Sat. 3         | NEWPORT(L)                | A 19-6  | C. John                      | S. Ford                | G. John               | C. Laity                  | S. Hill (1T)             |
| Sat. 10        | BRIDGEND(L)               | A 34-10 | C. John (1T)                 | S. Ford                | M. Hall (1T)          | C. Laity                  | S. Hill                  |
| Sat. 17        | Merthyr (Cup 4th)         | H 63-8  | C. John                      | S. Ford (2T)           | M. Hall (1T)          | G. John                   | S. Hill (1T)             |
| Thu. 22        | PONTYPRIDD(L)             | H ..... |                              |                        |                       |                           |                          |
| Mon. 26        | Cardiff Institute         | H ..... |                              |                        |                       |                           |                          |
| Sat. 31        | NEATH(L)                  | A ..... |                              |                        |                       |                           |                          |
| JANUARY 1995   |                           |         |                              |                        |                       |                           |                          |
| Sat. 7         | SWANSEA(L)                | H ..... |                              |                        |                       |                           |                          |
| Sat. 14        | Maesteg                   | H ..... |                              |                        |                       |                           |                          |
| Fri. 20        | Bristol                   | H ..... |                              |                        |                       |                           |                          |
| Sat. 28        | (Cup 5th Round) Moseley   | H ..... |                              |                        |                       |                           |                          |
| FEBRUARY       |                           |         |                              |                        |                       |                           |                          |
| Sat. 4         | LLANELLI(L)               | A ..... |                              |                        |                       |                           |                          |
| Wed. 8         | TREORCHY(L)               | H ..... |                              |                        |                       |                           |                          |
| Sat. 11        | Swansea                   | A ..... |                              |                        |                       |                           |                          |
| Fri. 17        | London Welsh              | H ..... |                              |                        |                       |                           |                          |
| Sat. 25        | PONTYPOOL(L)              | A ..... |                              |                        |                       |                           |                          |
| MARCH          |                           |         |                              |                        |                       |                           |                          |
| Sat. 4         | Watsonians (a.m.)         | A ..... |                              |                        |                       |                           |                          |
| Sat. 11        | ABERTILLERY(L)            | A ..... |                              |                        |                       |                           |                          |
| Fri. 17        | Bath                      | H ..... |                              |                        |                       |                           |                          |
| Sat. 25        | Cup 6th Round             |         |                              |                        |                       |                           |                          |
| APRIL          |                           |         |                              |                        |                       |                           |                          |
| Sat. 1         | DUNVANT(L)                | H ..... |                              |                        |                       |                           |                          |
| Sat. 8         | Cup Quarter Final         |         |                              |                        |                       |                           |                          |
| Thu. 13        | NEWBRIDGE(L)              | A ..... |                              |                        |                       |                           |                          |
| Sat. 15        | Barbarians                | H ..... |                              |                        |                       |                           |                          |
| Sat. 22        | Cup Semi Final            |         |                              |                        |                       |                           |                          |
| Sat. 29        | NEWPORT(L)                | H ..... |                              |                        |                       |                           |                          |
| MAY            |                           |         |                              |                        |                       |                           |                          |
| Sat. 6         | Cup Final                 |         |                              |                        |                       |                           |                          |

# FIXTURES AND STATISTICS

| 10                     | 9                        | 1                       | 2                            | 3                             | 4                 | 5                             | 6               | 7                           | 8                      |
|------------------------|--------------------------|-------------------------|------------------------------|-------------------------------|-------------------|-------------------------------|-----------------|-----------------------------|------------------------|
| A. Davies (6C, 1P)     | A. Moore (1T)            | A. Lewis (M. Griffiths) | J. Humphreys (1T)            | L. Mustoe                     | S. Roy            | D. Jones                      | M. Bennett (1T) | H. Taylor                   | O. Williams            |
| C. John                | A. Moore                 | M. Griffiths            | J. Humphreys                 | L. Mustoe                     | S. Roy            | D. Jones                      | M. Bennett      | H. Taylor                   | O. Williams            |
| A. Davies              | A. Booth (A. Moore)      | M. Griffiths            | H. Bevan (2T)                | L. Mustoe                     | S. Roy (H. Stone) | P. Jones                      | V. Davies       | H. Taylor                   | E. Lewis               |
| S. Davies (3C, 1P)     | A. Moore (1T) (G. Baber) | D. Joseph               | J. Humphreys                 | L. Mustoe (M. Griffiths)      | H. Stone          | M. Voyle                      | M. Bennett      | M. Budd (1T)                | O. Williams            |
| C. John (1C, 2P)       | A. Moore (1T)            | D. Joseph               | J. Humphreys                 | A. Lewis                      | H. Stone          | S. Roy                        | P. Agar         | V. Davies                   | O. Williams            |
| A. Davies              | A. Moore                 | M. Griffiths            | J. Humphreys                 | L. Mustoe                     | S. Roy            | D. Jones                      | M. Bennett      | H. Taylor                   | E. Lewis               |
| A. Davies (1P, 1C)     | A. Booth                 | D. Joseph (1T)          | H. Bevan (1T)                | L. Mustoe                     | S. Roy            | D. Jones                      | H. Taylor       | O. Williams                 | E. Lewis (1T)          |
| C. John (1T, 6C)       | A. Booth (O. Williams)   | A. Lewis                | H. Bevan                     | P. Sedgemore                  | P. Agar           | S. Roy                        | M. Bennett      | M. Budd (1T)                | H. Stone (1T)          |
| A. Davies (1DG)        | A. Moore (1T)            | M. Griffiths            | J. Humphreys                 | L. Mustoe                     | S. Roy            | D. Jones                      | M. Bennett      | M. Budd (1T)                | H. Stone               |
| A. Davies (1P)         | A. Moore                 | M. Griffiths            | J. Humphreys                 | L. Mustoe                     | S. Roy            | D. Jones                      | H. Taylor       | O. Williams                 | E. Lewis               |
| A. Davies (5C, 2P)     | A. Booth (1T)            | A. Lewis                | H. Bevan (1T)                | D. Joseph                     | S. Roy            | D. Jones (H. Stone)           | H. Taylor       | M. Budd                     | E. Lewis (1T)          |
| G. John (1T)           | J. Hewlett (G. Baber)    | A. Lewis                | J. Humphreys (1T) (H. Bevan) | P. Sedgemore                  | J. Wakeford       | S. Roy (1T) (St. John Towell) | H. Stone        | M. Budd                     | O. Williams            |
| G. John (1T)           | G. Baber                 | A. Lewis                | J. Humphreys                 | M. Griffiths                  | J. Wakeford (1T)  | S. Roy (2T)                   | M. Bennett      | V. Davies                   | H. Stone               |
| G. John                | A. Booth                 | P. Sedgemore            | H. Bevan                     | D. Joseph                     | J. Wakeford       | St. John Towell               | P. Agar         | V. Davies (1T) (H. Merrett) | O. Williams (1T)       |
| A. Davies (1C, 5P)     | A. Moore                 | M. Griffiths            | J. Humphreys                 | P. Sedgemore                  | S. Roy            | D. Jones                      | M. Bennett      | O. Williams                 | E. Taylor              |
| A. Davies (3P, 3C)     | A. Booth (A. Moore)      | A. Lewis (1T)           | H. Bevan                     | D. Joseph (2T) (M. Griffiths) | J. Wakeford       | S. Roy                        | H. Taylor       | H. Stone                    | E. Lewis               |
| S. Davies (8C)         | G. Baber (O. Edwards)    | L. Mustoe (A. Jones)    | B. Wakefield                 | P. Sedgemore                  | J. Wakeford       | H. Stone (1T) (N. James)      | H. Merrett (2T) | St. John Towell             | O. Williams            |
| A. Davies (3P)         | A. Moore                 | L. Mustoe               | J. Humphreys                 | M. Griffiths                  | S. Roy            | D. Jones                      | M. Bennett      | O. Williams (1T)            | H. Taylor              |
| A. Davies (2C, 5P)     | A. Moore                 | M. Griffiths            | J. Humphreys                 | P. Sedgemore                  | S. Roy            | D. Jones (J. Wakeford)        | H. Taylor       | M. Budd (H. Bevan)          | E. Lewis (O. Williams) |
| A. Davies (1T, 6C, 2P) | A. Booth (1T)            | A. Lewis                | H. Bevan                     | L. Mustoe                     | J. Wakeford (1T)  | S. Roy                        | H. Taylor       | M. Bennett (2T)             | H. Stone               |

## CARDIFF RUGBY SUPPORTERS CLUB

Chairman: Mr. K. A. Jones. Tel: 0222 593571

Treasurer: Mr. S. Down, 17 Glan-y-Llyn, Clydach Vale, Rhondda. Tel: 0443 439164

Secretary: Mr. H. J. Earwicker, 11 Hillside, Cwmdare, Aberdare, CF44 8RN. Tel: 0685 877565

Membership Secretary: Mr. A. Corcoran, 258 Chapelwood, Llanedeyrn, Cardiff CF3 7EN.  
Tel: 0222 736979

### WHY JOIN ?

The Cardiff Supporters Club – annual subscriptions are only £2 with £1 for juniors and OAPs – hold social functions throughout the season, run buses at advantageous rates for most away matches and weekend trips to some internationals.

It also publishes newsletters at regular intervals.

### AWAY MATCH COACH ARRANGEMENTS

1994

● Sat. Dec. 31st – NEATH

See MISCELLANY for plans for 1995.

1995

● Sat. Feb. 4th – LLANELLI

● Sat. Feb. 11th – SWANSEA

● Sat. Feb. 25th – PONTYPOOL

● Sat. Mar. 11th – ABERTILLERY

● Thur. Apr. 13th – NEWBRIDGE





JULIAN  
HODGE  
BANK

A  
BANK  
WITH TRADITIONAL VALUES

CURRENT ACCOUNTS  
DEPOSIT ACCOUNTS  
PRIVATE SAFE DEPOSIT FACILITIES  
COMMERCIAL MORTGAGES  
ASSET FINANCE

PLEASE TELEPHONE OR FAX FOR DETAILS  
10, Windsor Place, Cardiff CF1 3BX  
Tel: 0222 220800 Fax: 0222 344061



Adrian Davies

**"They do things**

distinctively, globally,  
successfully, innovatively,  
positively, uniquely,  
effectively, superlatively,  
internationally,  
strategically, confidentially,  
expertly, laterally, rapidly,

punctually, helpfully, appropriately, locally,  
accurately, unconventionally, professionally,  
precisely, comprehensively, knowledgeably,  
intelligently, **differently"**

For further information telephone our Cardiff  
office on 01222 640111



International Property Consultants

COTTON  OXFORD

ESTABLISHED 1924



**OFFICIAL KIT SUPPLIERS TO CARDIFF R.F.C.**

A FULL RANGE OF RUGBY ACTIVEWEAR AND  
LEISUREWEAR IS AVAILABLE FROM YOUR CLUB SHOP



# Cardiff Rugby Club 1994-95

## ATHLETIC XV FIXTURES and UNDER 21s

|           |                    |         |
|-----------|--------------------|---------|
| 1994      |                    |         |
| AUGUST    |                    |         |
| Sat. 27   | Maesteg 2nd's      | H 84-5  |
| SEPTEMBER |                    |         |
| Thu. 1    | Abercrave*         | A 55-5  |
| Sat. 3    | Wasps U21's        | A 17-21 |
| Sat. 10   | Moseley 2nds       | H 16-13 |
| Sat. 17   | Coventry Extras    | A 17-24 |
|           | Richmond U21's     | H 18-11 |
| Sat. 24   | Swansea 2nd's      | H 39-15 |
| OCTOBER   |                    |         |
| Wed. 5    | Mountain Ash U21's | A 17-22 |
| Sat. 8    | Bristol University | H 37-27 |
| Sat. 15   | Rosslyn Park U21's | A 20-10 |
| Tue. 18   | Bristol U21's      | A 11-39 |
| Tue. 25   | Mountain Ash       | A 36-12 |
| Sat. 29   | Abercynon 2nd's    | A 11-25 |
| NOVEMBER  |                    |         |
| Sat. 5    | Exeter U21's       | A 24-6  |
| Sat. 12   | Dunvant 2nd's      | H 50-0  |
| Sat. 19   | Pontypool Athletic | H 21-13 |
| DECEMBER  |                    |         |
| Sat. 3    | Newport 2nd's      | H 14-10 |
| Sat. 10   | Bristol University | A 27-16 |
| Sat. 17   | Gloucester U21's   | H 10-25 |
| Fri. 23   | Bath U21's         | A ..... |
| Thu. 29   | Maesteg 2nd's      | A ..... |

|          |                    |         |
|----------|--------------------|---------|
| 1995     |                    |         |
| JANUARY  |                    |         |
| Mon. 2   | Exeter U21's       | H ..... |
| Sat. 7   | Swansea 2nd's      | A ..... |
| Wed. 11  | Exeter University  | H ..... |
| Sat. 14  | Gloucester U21's   | A ..... |
| Sat. 28  | Bath United        | A ..... |
| FEBRUARY |                    |         |
| Wed. 1   | Mountain Ash U21's | H ..... |
| Sat. 4   | Wasps 2nd's        | H ..... |
| Sat. 11  | Coventry Extras    | H ..... |
| Wed. 15  | Bristol U21's      | H ..... |
| MARCH    |                    |         |
| Sat. 4   | Exeter University  | A ..... |
| Wed. 8   | Pontypool Athletic | A ..... |
| Sat. 11  | Rosslyn Park U21's | H ..... |
| Wed. 15  | Rumney U21's       | H ..... |
| Sat. 25  | Moseley 2nd's      | A ..... |
| APRIL    |                    |         |
| Sat. 1   | Bath               | H ..... |
| Sat. 8   | Cardiff Institute  | A ..... |
| Fri. 14  | Abercynon 2nd's    | H ..... |
| Sat. 22  | Richmond U21's     | A ..... |
| Sat. 29  | Newport 2nd's      | A ..... |

\* - Centenary Fixture

## YOUTH XV FIXTURES

|           |                                  |         |
|-----------|----------------------------------|---------|
| 1994      |                                  |         |
| AUGUST    |                                  |         |
| Sat. 27   | Cornelly 7s                      | A ..... |
| SEPTEMBER |                                  |         |
| Sat. 3    | Pembroke                         | H 69-5  |
| Sat. 10   | Moseley                          | H 58-0  |
| Sat. 17   | Coventry                         | A 46-6  |
| Wed. 21   | Bedwas                           | A 27-8  |
| Sat. 24   | Leicester                        | H 45-22 |
| OCTOBER   |                                  |         |
| Sat. 1    | Llanelli                         | H 43-14 |
| Sat. 8    | Pontypridd                       | A 22-6  |
| Sat. 15   | Carmarthen Athletic              | H 64-6  |
| Wed. 26   | Glamorgan Wanderers              | A 67-0  |
| Sat. 29   | Ottley                           | H 68-6  |
| NOVEMBER  |                                  |         |
| Sat. 5    | Neath                            | A 55-12 |
| Sat. 12   | Dunvant                          | H 47-5  |
| Sat. 19   | Taibach                          | A 83-0  |
| DECEMBER  |                                  |         |
| Mon. 26   | Llandaff/<br>W. George XV (a.m.) | A ..... |
| Sat. 31   | Llandaff North                   | H ..... |

Saturday Kick Off - 2.30 p.m.

|          |                  |         |
|----------|------------------|---------|
| 1995     |                  |         |
| JANUARY  |                  |         |
| Sat. 7   | Bath             | A ..... |
| Wed. 11  | Lydney           | A ..... |
| Sat. 14  | Brecon           | H ..... |
| Sat. 28  | Cheltenham       | H ..... |
| FEBRUARY |                  |         |
| Sat. 4   | Llanelli         | A ..... |
| Sat. 11  | Swansea          | A ..... |
| Wed. 15  | Cornelly         | A ..... |
| Sat. 25  | Bridgend         | A ..... |
| MARCH    |                  |         |
| Wed. 1   | Bedwas           | H ..... |
| Sat. 11  | Llanharan        | H ..... |
| Wed. 15  | Old Illydians    | A ..... |
| Sun. 19  | Bristol          | A ..... |
| Sat. 25  | Moseley          | A ..... |
| APRIL    |                  |         |
| Sat. 8   | Tour             | H ..... |
| Sat. 15  | Crawshays        | H ..... |
| Mon. 17  | Newport Festival | H ..... |
| Sat. 22  | Neath            | H ..... |
| Sat. 29  | Pontypool        | H ..... |

Mid Week Kick Off - 7.15 p.m.

Programme Co-ordinators: ADsport (0222) 575174  
Provincial Printing and Publishing Co. Ltd., Cardiff

*Lex Vauxhall*

## NEW CARS & VANS

## USED CARS

## SERVICE

## PARTS

## BODY SHOP

## RENTAL



Lex Service makes the difference

Lex



Lex Vauxhall Nash House Sloper Road Cardiff

Tel: 01222 387221

OPENING TIMES: MON-FRI 8.00-7.00 SAT 8.30-5.00 SUN 10.30-5.00





FOR THE BEST TEAMWORK TRY  
**WYNDHAM**



**WYNDHAM**  
DISCOVER THE EDGE  
CULVERHOUSE CROSS  
CARDIFF. TEL: 0222 597070  
A MEMBER OF CULVER HOLDINGS PLC