

## 13

**SEASON**  
**1977 - 1978**



Today's match is  
being sponsored by

## Official Programme

**10p**

### Donation to Club.

**Thank you !**


**PD Industrial Services**

ABERAVON RUGBY SUPPORTERS CLUB ABERAVON RUGBY SUPPORTERS CLUB ABERAVON RUGBY SUPPORTERS C  
THE WIZARDS THE WIZARDS THE WIZARDS THE WIZARDS THE WIZARDS THE WIZARDS THE WIZARDS THE  
ABERAVON RUGBY SUPPORTERS CLUB ABERAVON RUGBY SUPPORTERS CLUB ABERAVON RUGBY SUPPORTERS C  
THE WIZARDS THE WIZARDS THE WIZARDS THE WIZARDS THE WIZARDS THE WIZARDS THE WIZARDS THE  
ABERAVON RUGBY SUPPORTERS CLUB ABERAVON RUGBY SUPPORTERS CLUB ABERAVON RUGBY SUPPORTERS C

**Saturday, January 28th, 1978**

**Kick-off 3 p.m.**

# CARDIFF

16

For your Sports Requirements  
visit

**SELWYN JENKINS**  
SPORTS COMPANY LIMITED

45 Station Road, Port Talbot  
Telephone 2787

Dry Cleaners  
Carpet Cleaners

**MIRROR LAUNDRY**

Telephones 2742, 2859, 3686

Open nightly 8 p.m. to 2 a.m. (Mondays to Saturdays)

VISIT THE  
**SANDMAN CLUB**

*Specialists in all types of functions*

**Aberavon Seafront**

Telephone : Port Talbot 3819

Everything you would expect from a High Street Bank

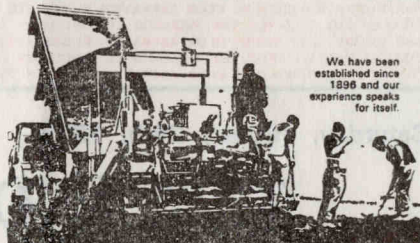


**TRUSTEE SAVINGS BANK**  
of Wales and Border Counties

115/117 Station Road, Port Talbot. Branches throughout the area

**C. & F. GAEN LTD.**

Bituminous & Tarmacadam  
Contractors to Industry  
and Local Authorities



**Green Park Estate**  
**Port Talbot**

Tel. 2983/3282

The success of your Dance, Dinner, Wedding Reception,  
Private Party, is assured if the catering is by

**ANTOLIN'S**

ROS - A - MAR SUITE

For full details telephone Port Talbot 3942

Telegrams : Scott, Contractors, Port Talbot



*Civil Engineering Contractors*

**THE GRANGE, MARGAM, PORT TALBOT**

Telephone : Port Talbot 4971 (10 lines)

For personal service and attention contact

**A. DENBY & SON**

Coal and Anthracite Merchant

"Afallon", 34 Abbey Road, Port Talbot. Tel. Port Talbot 2535

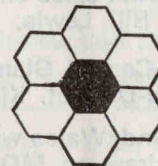
**TALBOT BLOCK LTD.**

Concrete and  
Breeze Blocks

Rock Faced  
Concrete Blocks

Bricks

Pre-stressed Concrete  
Lintels and Sills



Firebricks and Walling  
Modelo reconstructed  
Stone

Screen Blocks

Patio Paving

(all sizes and colours  
in stock)

Garden Ornaments, Fibre Glass Pools, Pumps and Pool Liners  
Sand, Cement and Chippings delivered to all areas

North Wharf, Port Talbot Docks. Telephone 4443/6401



### Aberavon Rugby Supporters' Club Notes

This afternoon we welcome CARDIFF, currently leaders of the Western Mail Club Championship, but only by a very narrow margin. Defeat for the men of Taff could topple them from the top and lift the Wizards a place or two. Cardiff are not involved in the Anglo Welsh or Whitbread Merit Tables, so today's result will not affect Aberavon's lead in the former table, or second position in the latter.

Both sides are playing good rugby and are involved in the Quarter Finals of the Schweppes/W.R.U. Cup. Aberavon hope to extend their run of victories to fourteen in succession this afternoon, and reverse the result at the Arms Park back in September. Gerald Davies had a fine run of tries against Pontypool a fortnight ago and again in the Trial last week. Clive Shell leads the Wizards by example; he and his team are eager to keep the Wizards on top right up to the end of the season.

Today's match is being sponsored by P.D. Industrial Services. The Aberavon Rugby Football Club are grateful to them for their support today. We wish them and all supporters a memorable game of the best in Welsh Rugby—a game worthy of their generous gesture. Thank you — P.D. Industrial Services. We would refer readers to the next page of notes for more details about P.D.

The draw for tickets for the Wales/Scotland game appears on the back page. We are grateful to BP Chemicals for allowing us to overprint their advert.

Our next home match is the Cup game against Llanelli. Details of ticket sales on following page.

Bill Lewis, Programme Editor

**February 8th—Central Glamorgan R.F.C. play a match against Mid-District. Kick-off 7 p.m.**

Tickets for Ireland/Wales will be sold to members successful in draw on MONDAY, Feb. 20th, 1978 from Supporters' Club Room between 6 p.m. and 6.45 p.m. Result of draw on Club Notice Board and Supporters' Club Room and Selwyn Jenkins Sports, Station Road, from February 11th, 1978.

IF IT ISN'T AT THE AFAN LIDO ...



SPORTS CENTRE

... IT JUST ISN'T SPORTING

FACILITIES FOR EVERY KIND OF INDOOR SPORT

including: Swimming, tennis, boxing, badminton, basketball, volleyball, gymnastics, fencing, trampoline work, sports training courses, spaceball, cricket, five-a-side soccer, rugby squad training, body building, judo, squash courts, all the martial arts. The largest and most comprehensive centre in Wales—restaurant cafeteria, licensed bars, heated Olympic pool, sauna baths, solarium, dormitory accommodation.

Details from

Borough Recreation and Estates Department (Afan Lido Complex)  
Telephone Port Talbot 4141

A Borough of Afan Enterprise

Your main dealer for Volkswagen and Audi cars

## SINCLAIR'S

Danybryn Garage, Danybryn Road, Port Talbot. Tel. 3733  
(Adjacent to Aberavon R.F.C.)

New modern workshops and stores for servicing your present  
Volkswagen or Audi at

Seaway Parade, Baglan. Telephone Briton Ferry 814697



## J. NELSON & SONS

(Eric Nelson)

Diploma Coal and Anthracite Merchant

8 POPPY CLOSE, PORT TALBOT. Telephone 4062

PORT TALBOT is noted for STEEL and

## THE GRAND HOTEL

FOR STEAKS

Grand Hotel, Port Talbot. Tel. 2830.

A Berni Inn



WHEN IT COMES TO TROPHIES—COME TO

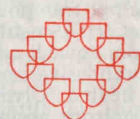
## S. EVANS & CO.

Engravers Manufacturers

Suppliers of every type of Commemorative Award

12 Angel Street, Neath. Telephone 55100

Appointments can be made day or evening



DINE IN THE KNIGHTS TABLE RESTAURANT

at the

## Twelve Knights Hotel

Margam, Port Talbot

★

*Excellent Carvery and Grill Menu*

*Open every day including Sunday*

★

Our new function room can cater for 40-180 persons  
for all types of functions.

★

For Reservations — Telephone Port Talbot 2381

AUSTIN



MORRIS

Steelmen of Port Talbot—BUY BRITISH at

## Pantdu Motor Sales, Cwmavon

Quality Used Cars : Self-drive hire : Unipart Centre  
Leycare Servicing

Tel. Cwmavon 378, 415, 500

## CARDIFF

16

GLYN DAVIES 15

T. GERALD R. DAVIES 14  
(Captain)

PAT DANIELS 13

MIKE MURPHY 12

DAVID THOMAS 11

GARETH DAVIES 10

TERRY HOLMES 9

BARRY NELMES 1

ALAN PHILLIPS 2

DAVID LLEWELLYN 3

CARL SMITH 4

IAN ROBINSON 5

TERRY CHARLES 6

ROGER LANE 8

STUART LANE 7

Replacements :  
J. O'Brien, M. Watkins

## ABERAVON

13

GREG REES

JEFF GRIFFITHS

NEIL HUTCHINGS

KERI COSLETT<sup>R LEWIS</sup>

LES KEEN

JOHN BEVAN

CLIVE SHELL  
(Captain)

JOHN RICHARDSON

BILLY JAMES

BARRIE LEWIS

ALLAN MARTIN

BILLY MAINWARING

RICHIE DAVIES

PHIL CLARKE

OGWYN ALEXANDER

Replacements :  
Wynford Lewis, Adrian Owen

Referee : D. E. Parry-Jones, Griffithstown

## JOHN BEVAN SPORTS

YOUR RUGBY EXPERTS

Suppliers of Adidas, Gola, Cotton-Oxford, Puma footwear  
Umbro and Bukta clothing

Corner of Victoria Gardens and Gnoll Park Road, Neath



Visit...

## Page's Home Supplies

for all your D.I.Y. requirements

4 Grove Place, Port Talbot  
Telephone 4076

Modern Gents' Hairstyling

## IAN'S

4 Lucania Buildings, Port Talbot

Open all day 8 a.m. to 5.30 p.m.  
Half-day Closing—Saturday

Wigs & Toppers our speciality

## FEEL FREE TO LET LLOYDS BANK TAKE A LOAD OFF YOUR SHOULDERS

Come in to Lloyds Bank. You'll find the way in is also a way out.

A way out of being dependent on cash, when a cheque can be so much more convenient.

A way out of worrying about remembering to pay your regular bills on time.

A way out of having too much month left at the end of your money.

We can help you to budget. We can help with things like travellers cheques for your holiday.  
We can even help you to save.

Call in at the sign of the Black Horse.

And let Lloyds Bank take a load off your shoulders.



A LOT MORE THAN MONEY  
AT THE SIGN OF THE BLACK HORSE.

For your next Coach Trip  
book with  
**Creamline Services**  
Ltd.

Travel with us in comfort  
Highbury Bungalow, Tonmawr  
Port Talbot  
Tel. Neath 3340 and 5565f

Depend on

## ESCOMBE GWYN TRAVEL

42a Station Road, Port Talbot  
Telephone Port Talbot 5112

Approved ABTA & IATA Agents

Today's match is Sponsored by



Telephones : Port Talbot 71541; Bridgend 57448

P D Industrial Services plays a key role in improving industrial efficiency. They help to keep plants running and reduce downtime.

They do this by providing a specialised package of services. These range from the large-scale clearance of accumulated product spillage, to advanced techniques in surface cleaning and materials handling.

All their activities have evolved from years of practical experience in serving industry. They work anywhere, at any time with a multi-disciplined labour force supported by a major equipment resource.

### QUARTER FINAL

Schweppes W.R.U. Challenge Cup 1978

**ABERAVON v. LLANELLI**

Saturday, February 25th, 1978

Kick-off 3 p.m.

Tickets for the match will be on sale as follows :

TIME : MONDAY EVENINGS

January 30th, February 6th, 13th, 20th  
6 p.m. to 6.45 p.m.

and after today's game, 4.45 p.m. to 5 p.m.

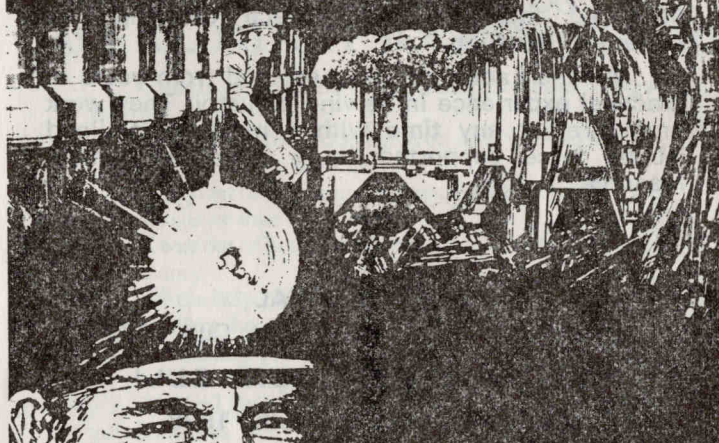
PLACE : ABERAVON SUPPORTERS' CLUB  
Hafod Street end of ground

Tickets will ONLY be on sale at these times  
at the Supporters' Clubroom.

STAND £1.50. FIELD 60p



# Modern mining adds muscle to the Welsh economy!



Gone are the days of pick and shovel!  
Today's miner is a man who knows about big machines -  
and when we say big, we mean big!

Coal is sliced from the face by the tungsten teeth of  
rugged 150 horsepower shearers and ploughs.

New roadways are cut through solid rock and coal by  
big, tough tunnelling machines.

Coal is hauled out by modern 100 horsepower locos  
and sped to the surface by huge electric winding engines.

£20,000 a throw for a modern mining machine is quite  
common and a single pit may have over a million pounds  
worth on its books.

Coal-a big industry with a big future

**NCB**

## All the best

Tinplate for cans . . . food and drink, tinplate for scores of  
other uses to make life brighter and more convenient. All this  
tinplate comes from South Wales, where new plant, faster  
processes are being installed to supply this basic need of modern  
living. And South Wales supplies many other forms of steel, too.  
Steel which is vital to industry today.



British Steel Corporation

Have your daily and evening  
Newspapers and Magazines  
delivered to your door by

**ALLAN THOMAS**

74 Tanygroes Street, Port Talbot  
Tel. 5406

The Family Butcher and Poulterer

**Jock Martin**

2 Forge Road, Bethany Square  
Port Talbot  
Tel. 3909

All animals humanely slaughtered

Hotel  
**EXECUTIVE**

PORT TALBOT

Tel.: Port Talbot (063984) 4949  
(10 lines)



Hire the Snowdon Suite  
exclusively for only  
£20 including D.J.

Fund raising charity, Dances,  
Birthdays, Anniversaries or  
just for the fun of it !

## D.N.D. Metals (Services)

Ltd.

Scrap Metal Merchants

Skips and Plant for Hire

★

Telephone : NEATH 57461/2

# WALES v. SCOTLAND

National Stadium—February 18th, 1978

The following Season Ticket Members have drawn tickets for the above match, as follows:

## Stand (£4, £3, £2.50)

34 38 43 53 62 74 76 83 93 103 114 122 129  
136 145 153 160 170 180 184 190 204 209 217  
229 232 242 254 260 273 277 287 293 301 314  
321 327 335 347 352 361 369 379 388 400 409  
412 420 429 434 442 451 463 474 482 488 500  
507 512 518 530 538 546 553 559 569 577 581  
597 605 618 623 627 632 647 655 657 663 686  
688 697 702 709 722 731 738 745 752 757 766  
777 784 797 806 810 825 832 839 844 862 870  
875 878 887 892 902 910 923 926 936 950 958  
964 967 979 985 992 1008 1025 1030 1034 1041  
1054 1068 1075 1076 1085 1094 1107 1110 1113  
1133 1143 1150 1153 1167 1184 1200 1210 1222  
1229 1245 1252 1264.

## West or South Enclosures (£1.20)

47 59 80 98 117 133 150 167 178 188 213 225  
227 262 271 284 299 310 357 372 395 415 424  
431 445 454 457 486 491 501 521 527 543 552  
567 585 592 603 615 635 638 653 672 683 690  
713 728 736 764 799 808 822 838 861 889 912  
939 952 981 989 1010 1039 1062 1083 1104  
1115 1174 1189 1225 1227 1267.

## East Terrace (£0.70)

42 64 116 156 207 269 312 344 354 418 464  
525 570 607 669 706 751 814 865 916 960 1018  
1061 1109 1163 1215 1354 1380 1407 1433 1459  
1464 1479 1485 1514 1527 1533.

All tickets have been allotted by ballot.

The successful members can collect their tickets from Club Dining Room on THURSDAY, FEBRUARY 9th between 6.30 p.m. and 7.30 p.m.

Season tickets must be produced.

**BP Chemicals Limited**