

Bridgend
Rugby Football
Club
Brewery Field



Wednesday,
10th October, 1984
Kick-off 7.15 p.m.

Bridgend v Cardiff

PROGRAMME

25p

Rockwool Insulation Products

Rockwool manufacture a complete range of Thermal, Fire and Acoustic Insulation Products for Domestic and Industrial Buildings and Plant.

For further information please contact:

Rockwool Insulation Products

**Pencoed · Bridgend
Mid Glamorgan CF35 6NY
Telephone: 0656 · 862621**

BRIDGEND R.F.C. CAR PARKING

Applications are invited from members of the public for season tickets in respect of car parking at the Brewery Field Car Park. Tickets will be for periods of 3 months, 6 months and 12 months and will be for 5-day per week parking and 6-day per week parking.

Charges (inclusive of V.A.T.) will be as follows:—

5-DAY PER WEEK BASIS (MONDAY TO FRIDAY)

3 months — £18.75, 6 months — £37.50, 12 months — £75.00.

6-DAY PER WEEK BASIS (MONDAY TO SATURDAY)

3 months — £25.00, 6 months — £50.00, 12 months — £100.00.

Applications should be made to the Hon. Treasurer, Bridgend R.F.C., 55 West Road, Bridgend, Mid Glamorgan and should be accompanied by remittances for the appropriate amount, made payable to "Bridgend R.F.C." Receipts and car stickers will be provided by the Club.

In view of the limited number of spaces available, applications will be dealt with on a 'first-come/first-served' basis.

EDWARD H. JONES
Hon. Treasurer

BRIDGEND R.F.C. APPOINTMENT OF CAR PARK ATTENDANT/HANDYMAN

Applications are invited for the position of Car Park attendant/handyman at the Brewery Field, Tondur Road, Bridgend. Remuneration will be £80.00 for a 40-hour week which may be spread over six days as the circumstances dictate.

The successful applicant will be expected to serve a probationary period of six months. Further details of the position and conditions of service may be obtained from the Hon. Secretary Mr. W. A. D. Lawrie, 12 Hillsboro, Bridgend, Mid Glamorgan, to whom applications giving age and experience should be sent NOT LATER THAN MONDAY, 22nd OCTOBER, 1984.

TYRISHA INN, SARN

Mr. and Mrs. Derek Bennett wish the Club to correct a statement that appeared in our programme for the match against Crawshay's Welsh XV. on the 3rd October, 1984. "Mr. and Mrs. Bennett wish it to be known that they are the sole owners of the Tyrisha Inn, Sarn, which will be open for business with effect from the 23rd October, 1984, from which date they will be pleased to welcome all new customers including Mr. Norman Thomas and Mr. Glyn Thomas and their friends".

**Our grateful thanks
to Match Sponsors
WELSH BREWERS**

GROUND MAINTENANCE, FENCING
AND
GARDENING CONTRACTOR

W. R. DAVID & SONS

TORGELLY FARM
LLANHARRY
Tel: 0443/223711

Contractors to Bridgend R.F.C.

BRIDGEND R.F.C. SEASON 1984/85 PLAYING RECORD

Overall Record— Played 11, Won 8, Lost 3. Points for 305, Points against 154.

WESTERN MAIL CHAMPIONSHIP TABLE— Played 8, Won 5, Lost 3. Points for 165, Points against 118.

Try scorers 2 and over— Mark Titley (8), Tony Lewis (7), Glen Webbe, Stuart Parfitt (5), Kevin Ellis, Gareth Williams, Richard Griffiths (4), Colin Hillman (3), Jeff Stephenson, Michael Budd (2).

CAR PARKING DIRECTIVE BY POLICE

We have been informed by the Police that with effect from this evening (Wed. 10th October), and on the occasion of all future mid-week floodlit matches, car parking on the main road between the Filling Station and Mill Lane will be prohibited.

There have been several accidents recently on this stretch of road during and following mid-week matches, and the Police stress that the sole reason for this restriction is one of safety for motorists and pedestrians alike.

They have pointed out that when the Club car park becomes full there is considerable alternative parking space available in the confines of the Industrial Estate, a short distance from the ground.

We hope that Club members and supporters, together with visitors, will, in their own interests, co-operate with the Police in this matter. It would help greatly if spectators made every effort to get to the ground as early as possible, and so avoid the frustrating last-minute rush and often resultant panic-parking.

THANK YOU

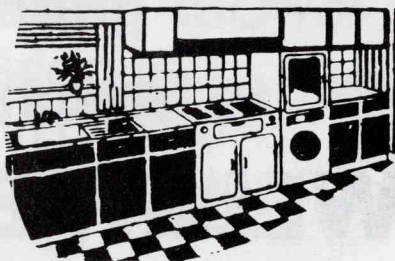
BD BERNARD DAVIES (BUILDERS' MERCHANTS) LTD.

Craiglands, Bryncethin, Nr. Bridgend, Mid Glamorgan
Telephone: ABERKENFIG 720279, 720308 & 721333

**EXTENSIVE STOCKS OF ALL
BUILDING MATERIALS AND
TOOLS**

Main Stockists of:

KITCHEN UNITS
BATHROOM SUITES
TILE SURROUNDS
REFORMITE STONE AND
FOREST OF DEAN NATURAL
STONE

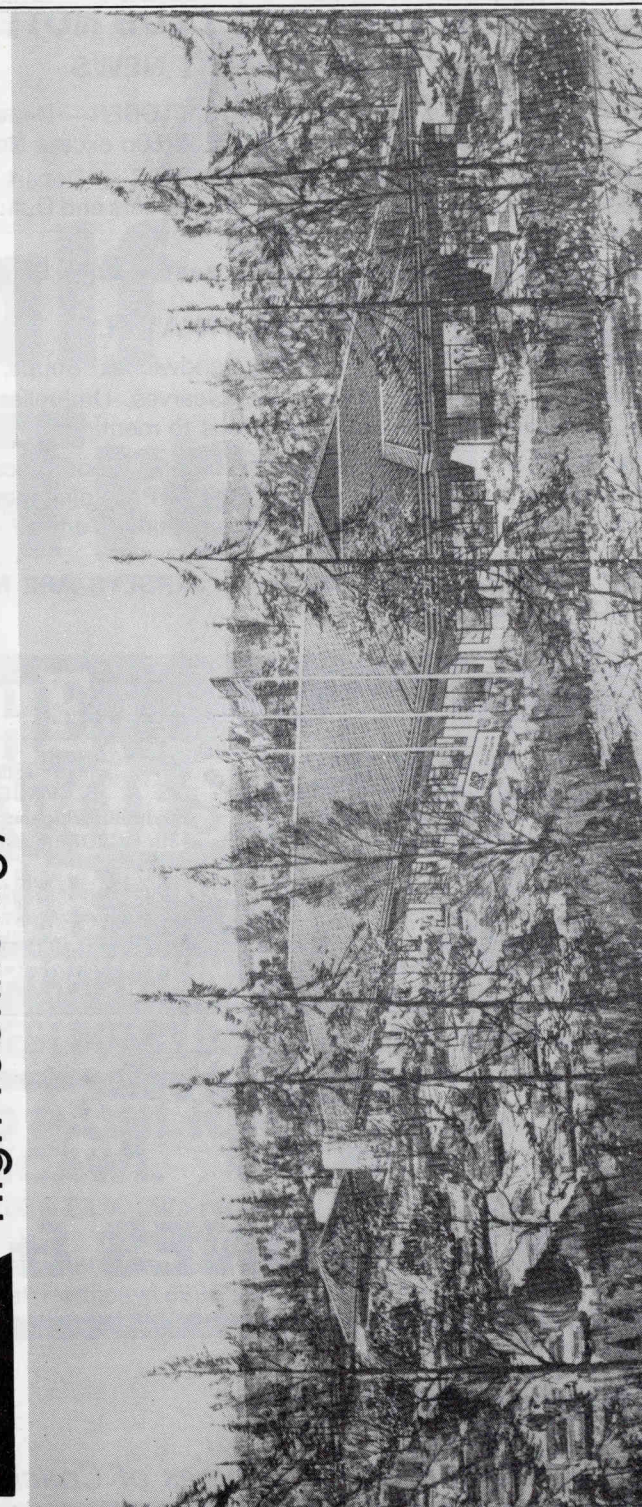


Mid Glamorgan's Leading Builders' Merchant



ALIGN-RITE LIMITED
bringing
High Technology Jobs to Wales

8th Floor,
Southgate House,
Wood Street,
Cardiff. CF1 1EW.
Tel: (0222) 383866.



Align-Rite Limited, High Technology Science Park, Bridgend.

SUPPORTERS CLUB NOTES

TRANSPORT NEWS

LONDON WELSH— SATURDAY, 13th OCTOBER— Depart 9.00 a.m., Return 7.00 p.m. £6.50 Adult, £5.50 Junior/O.A.P. 60p excess Non Members.

ABERAVON— SATURDAY, 27th OCTOBER— Depart 2.00 p.m., Return immediately after game. £1.30 Adults, 90p Juniors and O.A.P.'s. 30p excess Non Members.

Make sure of your seat — Book Early

WHAT'S ON AT H.Q.

CAFETERIA— Hot Pasties, Hot Pies, Sandwiches, Soups, Tea, Coffee, etc.

SOUVENIRS— Pullovers, Ties, Caps, Scarves, Umbrellas, Rosettes, Badges, Pens, and many more items to numerous to mention.

TUCK SHOP— Those Gooley, Mouthwatering, Tooth decaying Mars Bars, Kit Kats, Mojos, Blackjacks, Lion Bars, Cans of Pop, plus many more sickly items including Uncle Merlin's Chocolate coated Curly Wurly's.

STOP PRESS— BRIDGEND R.F.C. JERSEYS ARE NOW IN STOCK — ALL SIZES AVAILABLE.

Brinley George,
CHAIRMAN

BARBARIANS -v- AUSTRALIA

National Ground, Cardiff Arms Park
Saturday, 15th December, 1984.

Kick-off 2.15 p.m.

GRANDSTAND — £9.00 and £8.00

ENCLOSURE — £3.00

EAST TERRACE — £2.50

The Club will have a privileged application
for tickets for the above.

But personal applications, with cash and

S.A.E. where needed, must be made to Mr.
W. A. S. VAUGHAN, 10 Tremgarth,
Wildmill, Bridgend, by NOT LATER THAN
13th OCTOBER, 1984. Telephone: Bridgend
56161.

Subsequent applications will have to be
made individually by members, so for the best
tickets apply by 13th OCTOBER, 1984.

FINAL NOTICE



GWYN JONES & SON

Whitecroft Garage,
Bryncethin,
Nr. Bridgend.
Telephone: 720300/720182.

Consult us for all types of Coach Hire.

A Half Term Treat

THE KRANKIES' KLUB ON TOUR

AN ALL NEW PRODUCTION

SPECIAL GUEST BOBBY DAVRO with full Company & Orchestra

GRAND PAVILION - PORTHCAWL

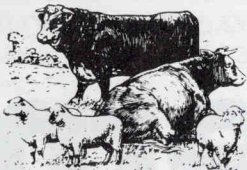
Tuesday 23rd October
at 2.30 and 6.45 pm

Tickets: £4.00 & £3.00 (50p reduction for children, O.A.P's and
registered unemployed)

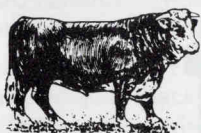
Available from: Grand Pavilion Box Office,
Tel: Porthcawl 6996 and usual selling points

PETER WOOD

HIGH CLASS FAMILY BUTCHER
STALL 2 THE NEW MARKET
Tel: 56985 BRIDGEND



DEEP FREEZE ORDERS SUPPLIED
and promptly attended to



Deliveries Daily of
Local BEEF, LAMB
AND PORK
From Farms in
THE VALE OF
GLAMORGAN

Official Suppliers to BRIDGEND RFC

Tonight's Teams and Programme Notes by W. A. D. Lawrie

This evening we extend a very warm welcome to CARDIFF, fresh from their crushing defeat of Newport by 37 points to 3 on Saturday last. There seems no doubt that they are now slipping into top gear for their big match against Australia on the 24th October, whereas it must be admitted that we are now in somewhat of a decline, particularly following a very disappointing display at Ebbw Vale on Saturday last.

At the same time it has not been unknown for us to come back strongly after a bad patch, and it is interesting to note that Cardiff have not won at the Brewery Field since 1977/78, while our record at the Arms Park was quite outstanding for a number of years.

Last Saturday Cardiff's pack gained a vast amount of possession from all phases of forward play and it is here that they must be matched to start with, if there is to be any hope of a Bridgend win. Centre MARK RING picked up an

BRIDGEND

Colours: Gold

15 Howell DAVIES*

Full Back

14 Mark TITLEY*

Right Wing

13 Richard GRIFFITHS

Right Centre

12 Michael HALL

Left Centre

11 Doug BURGESS

Left Wing

10 Jeff STEPHENSON

Stand-off

9 Huw LLEWELLYN

Scrum-half

1 Ian STEPHENS*

Loose-head

2 Colin HILLMAN

Hooker

3 Chris COLLINS

Tight-head

4 Adrian OWEN

Lock

5 Billy HOWE

Lock

6 David ARTHUR

Left Flanker

8 Gareth WILLIAMS (Capt.)*

No. 8

7 Michael BUDD

Right Flanker

*International

Replacements:

Kevin Ellis, Lyn Davies

CARDIFF

Colours: Cambridge Blue and Black

15 Chris WEBBER

14 Mike CARRINGTON

13 Mark RING*

12 Kevin HOPKINS

11 Gerald CORDLE

10 Gareth DAVIES*

9 Terry HOLMES (Capt.)*

1 Jeff WHITEFOOT

2 Alan PHILLIPS*

3 Ian EIDMANN

4 Kevin EDWARDS

5 Robert NORSTER*

6 Robert LAKIN

8 John SCOTT*

7 Gareth ROBERTS

Replacements:

I. Greenslade, B. McAloon

Referee— Mr. R. O. P. JONES (Swansea) W.R.U.

Pass your
Property Problems
to us— you will find our handling
is impeccable, our service unbeatable and
our pace, very quick indeed.

Payton Jewell & Caines

Chartered Surveyors, Valuers and Estate Agents.

10 Dunraven Place, Bridgend. Tel: 4328

Every Sale, Valuation, Report, Survey is handled personally
by a partner who is a Chartered Surveyor.



outstanding hat-trick of tries with new wing MIKE CARRINGTON (another Pyle R.F.C. product) and CHRIS WEBBER getting the others. GARETH DAVIES'S 17 points came from 4 conversions, two penalties and a dropped goal to take him to 118 points for the season— remarkable scoring for a player who, these days, is surprisingly relegated to about sixth place in the Wales selectors' fly-half list of 1984/85 candidates.

Coach ROGER BEARD can be well satisfied with the build-up plan for the game against Australia now only 14 days away. One of their big selection problems will be in the back row. JOHN SCOTT's recent selection in the second row for Cardiff and England raises the question of whether he will play at No. 8 or lock. A look at the other contenders— ROBERT LAKIN, OWEN GOLDING, SCOTT, TERRY CHARLES, TIM CROTHERS and GARETH ROBERTS shows how difficult the task is going to be. Tonight's selection may be pointed to the selectors' thoughts. After tonight's game, Cardiff then

GARETH L. EDWARDS

Estate Agent & Valuer

- For Personal Service
- Treble Fronted Display Showroom
- Open 6 Days Per Week
- Unrivalled Mortgage Facilities
- Local Agent for Abbey National Building Society
- Member National Association of Estate Agents

Contact: Gareth L. Edwards, M.N.A.E.A., Estate Agent & Valuer,
4-6 Dunraven Place, Bridgend. Tel: 3274/2710/4253.
3-5 Hendre Road, Pencoed. Tel: 864033

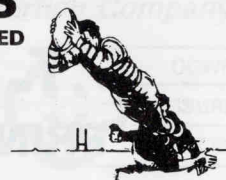
CONSULT
FRANCIS
(BUILDERS) LTD.
BRIDGEND
Tel: 55951/4559

For Houses of Distinction

WATTS SPORTS LIMITED BRIDGEND

Tel. 2184

Official
Suppliers of
Team Strip
to Bridgend RFC



Complete Team Strip in Junior sizes
PLUS all your Sport Requirements



For the best in Fitted
Carpets and Furniture
you can't beat

don lewis
(Carpets and Furniture) Ltd.

74-76 Nolton Street, Bridgend
Telephone 57682

Programme Notes continued

face Pontypool before the major game on the 24th October.

Behind the scrum wing GERALD CORDLE faces a real challenge for a place against the Aussies. Cordle— 29 tries in 29 appearances occupied the right wing position for the opening three matches of the winter. But the arrival of Mike Carrington has dramatically altered the picture, with ADRIAN HADLEY also strongly in contention.

Full backs PAUL REES and CHRIS WEBBER will be fighting for their place in the big game. Former Bridgend flanker STEVE PENRY-ELLIS is hoping to make a new start to his career at the Arms Park. Ligament and tendon strains were vigorously tested in a recent game with Bridgend Athletic, a club which he now coaches to complete a demanding call on his spare time.

So tonight's game should provide interesting challenges— Bridgend anxious to come back in

fine style against the strongest possible opposition and the visitors out to claim places for the most prestigious fixture of any season.

For BRIDGEND, injury problems have struck again. Tony Lewis with an ankle injury which will keep him out for two weeks, now joins John Apsee, Steve Brown, David Thomas, Glen Webbe and Stuart Parfitt on the side-lines which means that the entire back division is practically decimated.

There are four changes and one positional from the side at Ebbw Vale on Saturday last. RICHARD GRIFFITHS returns at right centre to partner young MICHAEL HALL, with wing DOUG BURGESS of Pyle R.F.C. making his debut at the Brewery Field in place of Tony Lewis. Doug had good trials here and we wish him well in his debut. Up front CHRIS COLLINS comes in for Mike Griffiths and BILLY HOWE for skipper Gareth Williams, the latter reverting to his normal No. 8 position. ADRIAN OWEN also

**THIS SPACE RESERVED
FOR
T. BRYANT PLANT
PRINCESS WAY, BRIDGEND**

Grand Pavilion Porthcawl

BOX OFFICE Telephone: Porthcawl 6996

Another Spectacular Charles Vance Pantomime Production



Jack and the Beanstalk

featuring

★ **Phil Rose**

(Friar Tuck in T.V.'s "Robin Hood")

★ **Alan Wells**

(Wales' favourite Dame comes home!)

★ **Trevor Harrison**

(Eddie Grundy in B.B.C.'s "The Archers")

★ **Colette Kelly**

(Star of "Hair" and "Paddington Bear")

With full supporting Company

**Wed. 26 Dec. to
Sat. 19 Jan.**

(Plus one pre-Christmas performance at 2.00 p.m. Sat. 22 Dec.)

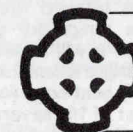
2.00 p.m. Matinee every week day to 4 Jan. thereafter Wed. and Sat. Matinees only. All Evening performances 6.30 p.m.

**No performances on
Mon. 31 Dec.**

Ticket Prices: £3.30/£3.00/£2.50 (Senior Citizens/Registered Unemployed/Children £2.80/£2.50/£2.00).

10% Discounts from day one for Parties of twenty and over apart from Monday performances when all seats will be offered at £2.00!!

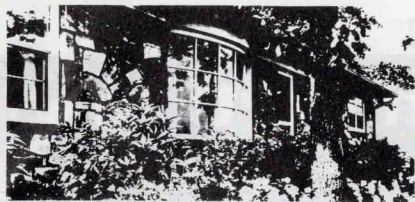
**BOX OFFICE NOW OPEN
RING PORTHCRAWL 6996.**



OGWR

LEISURE

SERVICES



BRIDGEND GLAZING AND SILVERING Co. Ltd.

BRACKLA INDUSTRIAL ESTATE. Tel: 3003

For New Glazing and Window Repairs
Pictures and Mirrors Framed, Glass cut
to Size and delivered

Programme Notes continued

makes his Brewery Field debut on permit from Aberavon, and will want to do well.

The successful Pyle Club will be well represented tonight with HOWELL DAVIES, MIKE CARRINGTON and DOUG BURGESS in action.

Ex-Brewery Field skipper Meredydd James is not likely to play again for Bridgend, but is reluctant to make a formal retirement announcement. James, 34 earlier in September still has knee trouble but has not been keen enough to sort it out. He recently became the father of a daughter and that coupled with his senior teaching position at Rhymney Comprehensive School puts rugby thoughts into second place. He led Bridgend in three seasons, skippering the

S. T. Treharne (Chemists) Ltd.



3 BRACKLA ST.
CENTRE
BRIDGEND

Telephone:
Bridgend 2025

Schwepes cup-winning side in 1980, and made exactly 400 Bridgend appearances. He was one of five Bridgend players who appeared in all four cup-finals from 1979-82.

Rhodri Lewis entered hospital on Thursday last to have a temporary pin inserted in his injured shoulder. It will have to stay in place for six weeks leaving the unlucky Lewis with mid-December as his best hope for a comeback date. He won the last of his seven caps in 1982, and has suffered one injury after another since then, in particular a long-standing knee problem which has now cleared up.

MATCH BALL Will any member, supporter, business or professional concerns who would like to donate the match ball for one of our 1984/85 home games please contact Mr.

Garfield Thomas, Social Club Chairman, Telephone Bridgend 58562.

NEIL O'BRIEN the gifted Cardiff scrum-half has been training at the Brewery Field and could well be given an early opportunity to stake a serious claim for a Bridgend place. Up to now young KEVIN ELLIS has acquitted himself well in a tough September programme, so the position is wide open.

The Bridgend R.F.C. Former Players Association's next function will be a Buffet Dinner for former players and ladies to be held at the Clubhouse on Friday, 30th November, 1984.

Applications for membership will be welcomed by Mr. J. G. Goss, 32 Parcau Avenue, Bridgend. Tel: 55358. Looking further ahead, the Association will have the opportunity of reciprocating the wonderful hospitality which they received at Moseley last season, when the Midlands Club visit the Brewery Field on Sunday, 21st April, 1985.

Tonight's Match Ball has been donated by the well-known Welsh Character Actor—Huw Ceredig. Huw is now a member of the Club's General Committee, and depending upon his many professional commitments is rarely far from the rugby scene whether at the Brewery Field or at away matches, where his encouraging tones and constructive advice to friend or foe are readily identified. There are still several home dates upon which Match Balls can be donated. Please contact Mr. Garfield Thomas.

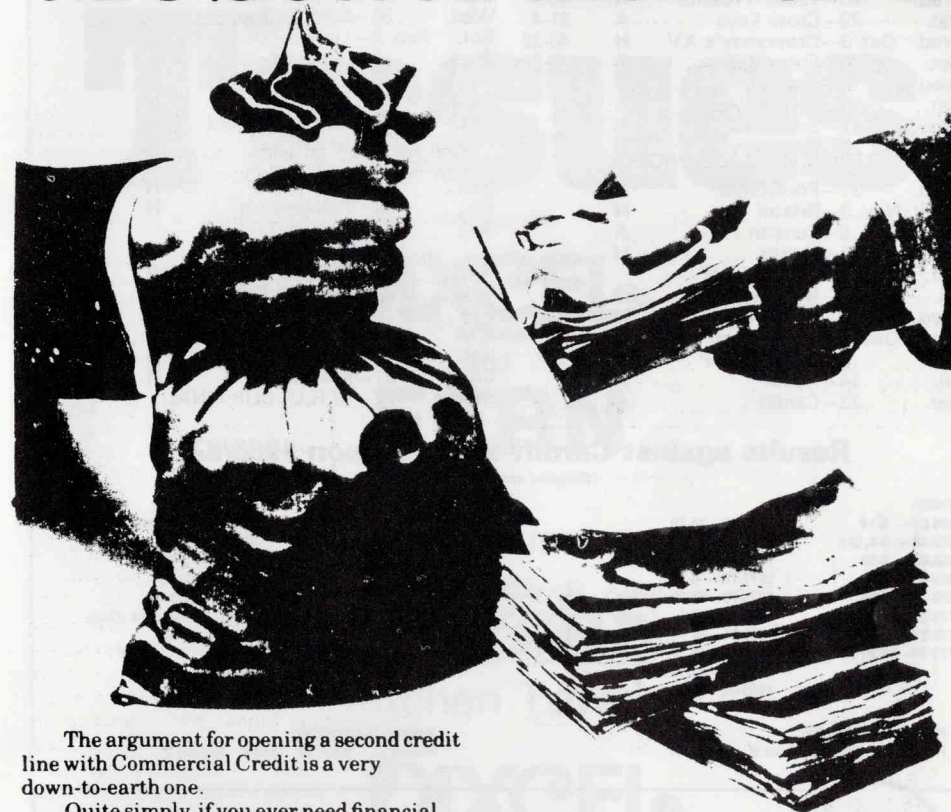
BRIDGEND YOUTH

BLAENGARW— Lost 9-13, PONTYPRIDD— Won 21-12.

CLUB LOTTERY

Agents are still required on a commission basis and full information can be obtained from Mr. HARRY HOLMES, 15 The Glade, Daleside, Bryncethin, Nr. Bridgend. Tel: 723683. Lottery office number Bridgend 3993. 8 a.m. to 4 p.m.

Why two credit lines are better than one.



The argument for opening a second credit line with Commercial Credit is a very down-to-earth one.

Quite simply, if you ever need financial advice then two heads are better than one.

However, the real benefits go much deeper.

The fact is, putting all your financial eggs in one basket, with your bank, could leave you in a somewhat vulnerable position.

Furthermore the terms of your overdraft can be altered as a result of bank policy. Or because of changes in the national economy.

A second credit line with Commercial Credit could bring a little more security into your financial arrangements.

Because Commercial Credit loans are for a guaranteed term at fixed or variable rates.

And normally the only security we'd ask would be the equipment itself.

Commercial Credit can arrange plant and machinery finance, marine, aircraft and property finance, equipment leasing and invoice discounting.

We have worldwide assets of over £2 billion and 16 branches throughout the UK. And we'd like to meet you to explain the other benefits of a second credit line with us.

Why not ring your local Commercial Credit Branch Manager on Cardiff 482508 and arrange a meeting?

COMMERCIAL CREDIT

FIXTURE LIST & RESULTS 1984/85

1984

Sat. Sept. 1—	Tredegar	H	35-3
Wed. 5—	Sports Club	H	54-4
Sat. 8—	Newbridge	H	33-13
Wed. 12—	Glam. Wanderers	H	19-12
Sat. 15—	Saracens	A	16-21
Wed. 19—	Llanelli	H	19-9
Sat. 22—	Pontypool	H	9-35
Wed. 26—	Taibach (Cent.)	A	46-7
Sat. 29—	Cross Keys	A	31-4
Wed. Oct. 3—	Crawshay's XV	H	40-25
Sat. 6—	Ebbw Vale	A	3-21
Wed. 10—	Cardiff	H	
Sat. 13—	London Welsh	A	
Wed. 17—	Swansea	H	
Sat. 20—	Coventry	H	
Sat. 27—	Aberavon	A	
Wed. 31—	Pontypridd	A	
Sat. Nov. 3—	Bristol	H	
Tues. 6—	Penarth	A	
Sat. 10—	Neath	H	
Sat. 17—	W.R.U. CUP		
Fri. 23—	Newbridge	A	
Wed. 28—	South Glam. Inst.	H	
Sat. Dec. 1—	Abertillery	H	
Sat. 8—	W.R.U. CUP		
Fri. 14—	Neath	A	
Sat. 22—	Cardiff	A	

B.D. Wed. 26—**Maesteg**
Sat. 29—**Gloucester**

H
A

1985

Sat. Jan. 5—	Newport	H	
Wed. 9—	Pontypridd	H	
Sat. 12—	Abertillery	A	
Fri. 18—	Glam. Wanderers	A	
Sat. 26—	W.R.U. CUP		
Wed. 30—	S.W. Police	H	
Sat. Feb. 2—	Llanelli	A	
Tues. 5—	Newport	A	
Sat. 9—	London Welsh	H	
Wed. 13—	Bath	H	
Sat. 23—	Cup or Bedford	A	
Wed. 27—	Penarth	H	
Wed. Mar. 6—	Swansea	A	
Sat. 9—	Aberavon	H	
Fri. 15—	Palmerston	H	
Sat. 23—	Cup (S/F)		
or Ebbw Vale		H	
Wed. 27—	Pontypool	A	
Sat. 30—	Rosslyn Park	H	
Sat. Apr. 6—	Maesteg	A	
E.M. 8—	Harlequins	H	
Sat. 13—	Cross Keys	H	
Sun. 21—	Moseley	H	
Sat. 27—	W.R.U. CUP FINAL		

Results against Cardiff since season 1966/67

(Bridgend scores first)

HOME:

1966-67—	3-14	1974-75—	24-10
1967-68—	3-6, 3-6	1975-76—	3-12
1968-69—	6-10	1976-77—	7-21
1969-70—	14-3	1977-78—	6-18
1970-71—	3-11	1978-79—	12-10
1971-72—	19-6	1979-80—	4-3
1972-73—	6-6	1980-81—	16-12
1973-74—	18-21 (Cup), 13-7	1981-82—	18-16
		1982-83—	21-16
		1983-84—	34-10

AWAY:

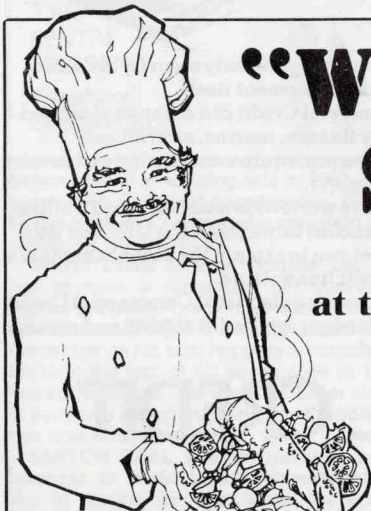
1966-67—	16-14, 21-8	1974-75—	13-12, 6-4 (Cup)
1967-68—	0-14	1975-76—	12-12
1968-69—	11-6	1977-78—	7-6
1969-70—	6-0	1978-79—	12-10
1970-71—	3-3	1979-80—	17-9
1971-72—	6-0	1980-81—	22-6, 6-14 (Cup)
1972-73—	9-7	1981-82—	14-18
1973-74—	13-11	1982-83—	6-29
		1983-84—	7-9

HOME SUMMARY:

Played 20 Won 10 Lost 9 Drawn 1.

AWAY SUMMARY:

Played 21 Won 13 Lost 6 Drawn 2.



"WELCOME TO STEAKS"

RESTAURANT

at the Railway Inn, Bridgend
Tel. 2266

10% DISCOUNT OFFERED TO BRIDGEND
R.F.C. SUPPORTERS ON PRESENTATION
OF THEIR MEMBERSHIP CARDS

British Tissues

makers of

DIXCEL

and

FERN

Toilet Tissue

DIXCEL Checks

Kitchen Towels

DIXCEL

Facial Tissues

CRESO

Industrial Products

send best wishes

British Tissues Ltd.,
Bridgend Paper Mills,
Llangynwyd,
Bridgend, Glamorgan.

British Tissues Ltd.,
Wrexham Industrial Estate,
Wrexham,
Clwyd.

Reserved for Hobbs Quarries

