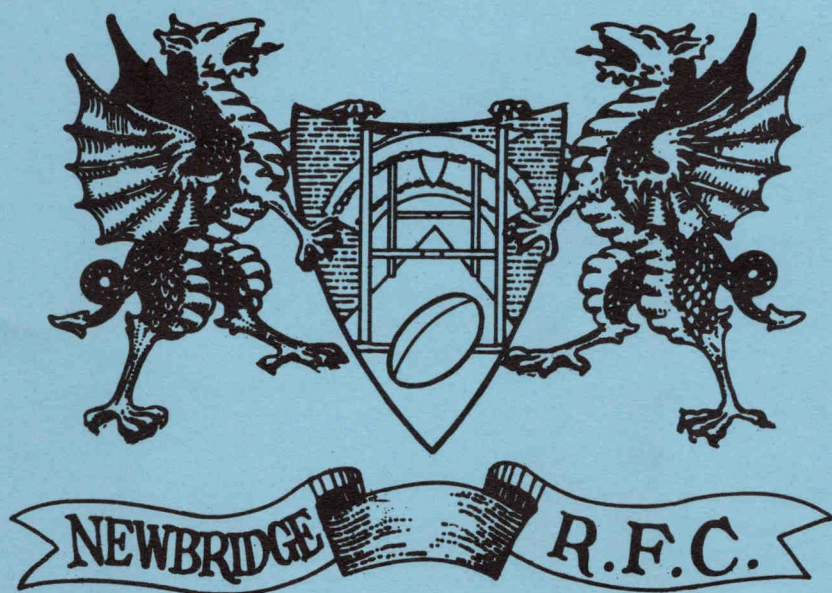


Newbridge Rugby Football Club

SPONSORED BY

AIWA[®]

(U.K.) LIMITED



OFFICIAL PROGRAMME

20p WHICH IS A DONATION TO NEWBRIDGE R. F. C.



Worthington

Best Bitter

Welsh Brewers



THE WELFARE GROUND, NEWBRIDGE

Schweppes W.R.U. Cup - 3rd Round

Newbridge

versus

Cardiff

Saturday, January 26th, 1985

Kick-off 2.30 p.m.

Could it possibly be third time lucky for us? After two unsuccessful ties against Cardiff in the space of four seasons our Supporters fervently hope for success. Whatever the result it will most certainly be a keenly contested game and at this stage of the Cup things are so finely balanced that it could be anyone's game. Although we didn't win in our last game at Pontypool we came from there more encouraged than we have been for many a year. The whole team played with both commitment and skill and with the benefit of a little more possession we might well have seen the old year out with a bang.

After a month's enforced break it's almost like starting a new season. But what a way to start a new season with games against Cardiff, Pontypool and Newport. Thank goodness we have the home advantage every time and if this could be converted into three wins we couldn't wish for a better New Year's present. A win today would most certainly put us in good heart.

Our Clubhouse improvement plans are now almost complete having refurbished the Lounge in time for Christmas. Hopefully, we will be so well supported today that it won't be shown to it's full advantage, but take our word for it, it really is a cracking job and makes a world of difference to our facilities. Many thanks to "Curly" Way one of our Committee members who was responsible for the design and to Dave Hayward who provided the advice.

Finally a welcome to our visitors from AIWA who are able to join us on this occasion. They really are good to us and we thank them for the recent gift of stereo equipment.

B. W.

CHRIS BRAIN MOTORS

ROVER AND JAGUAR

SPECIALISTS

Unit 12

Penyfan Industrial Estate

Croespenmaen, Crumlin, Gwent

NP1 4AG

Telephone: NEWBRIDGE 248684

After Hours: 245390



HAMMOND



YAMAHA

ELECTRONIC

ORGANS

JVC

HOHNER

AT

Musicland

★ FIRST CLASS AFTER SALES SERVICE

★ EXPERT TUITION

★ SOUTH WALES MAIN AGENTS FOR
ROLAND & YAMAHA SYNTHESIZERS

★ ALWAYS A FULL RANGE OF
LESLIE SPEAKERS IN STOCK

CARDIFF 621715

148-152 NORTH ROAD
CARDIFF

BLACKWOOD 222120

183 HIGH STREET
BLACKWOOD

NEWPORT 840981

16 EMLYN WALK, KINGSWAY CENTRE
NEWPORT, GWENT

PARKER SPORTS

T. & I. PARKER & SON

SPORTS AND LEISURE
SUPPLIES

4 High Street, Newbridge, Gwent

Tel. Newbridge 243850

Stockists of :-

SLAZENGER :: GOLA :: DUNLOP :: MITRE

SPONSORSHIP

If you are interested in sponsoring a

Match

The Aiwa Room is available for your guests

OR

The Match Ball

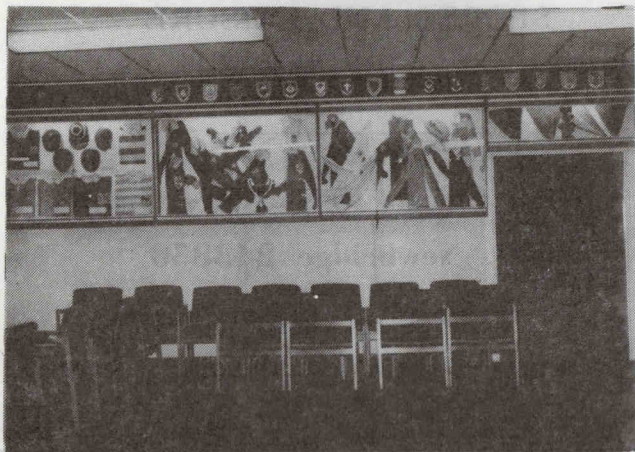
Please contact MR. GARETH THOMAS

Tel.: Home 0443 - 812530. Business 04955 - 3361

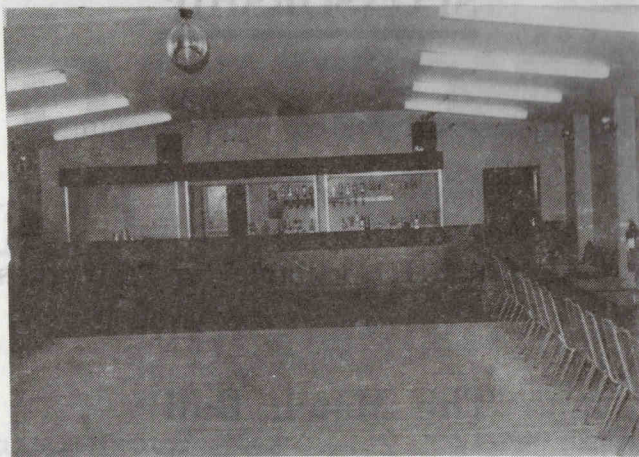
NEWBRIDGE R.F.C. CLUBHOUSE

Club Steward: Mr. L. Davies.

LOUNGE AND TROPHY ROOM



FUNCTION ROOM



A cordial invitation is extended to visitors and supporters to enjoy our facilities before and after the match.

PREPACK COAL

Collect Your Prepacked House Coal
and Central Heating Fuels

from:-



G. S. WEST

NEWBRIDGE
DIPLOMA COAL MERCHANTS

Suppliers of Coal Bunkers
and Tippy Hotash Carriers
Zip Fire Lighters and Paraffin

Spare parts available for all makes
of Solid Fuel Fires

STATION YARD, NEWBRIDGE

Monday - Friday 9 a.m. - 5 p.m. Sat. 9 a.m. - 12.30 p.m.

TELEPHONE: NEWBRIDGE 243859

FOR ALL YOUR
TYRE AND BATTERY
REQUIREMENTS
IN THE TYRE FIELD

- * LARGEST AND CHEAPEST STOCK
IN THE AREA
- * OPEN 7 DAYS A WEEK

Contact the Professionals . . .



PONT TYRE SERVICES LTD.

Sir Ivors Road (Main Newport Road),
Pontllanfraith, Gwent.

TELEPHONE: BLACKWOOD 225553

Aubrey Edwards & Son

113 COMMERCIAL STREET, PONTYMISTER

TEL. RISCA 615335

LOCAL AGENT HALIFAX BUILDING SOCIETY

Specialising in
The Sale and Valuation
of all types of
RESIDENTIAL PROPERTY
in the area of
Newbridge, Risca, Crosskeys and Cwmearn

E. A. G. OWEN

FAMILY FOOTWEAR

5 Victoria Terrace, Newbridge, Gwent

Tel. Newbridge 243022

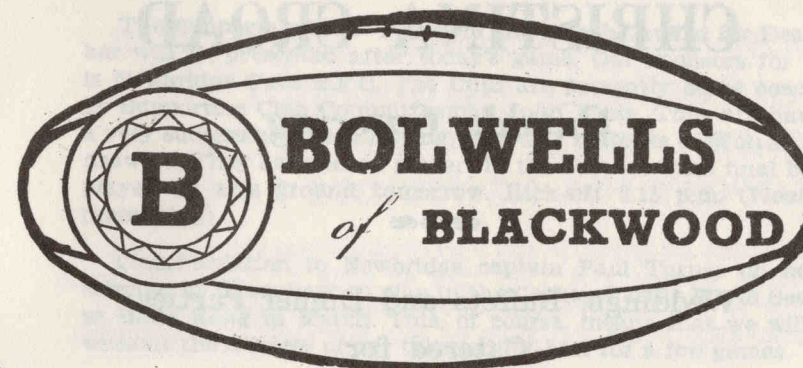
Agents for:

K : LOTUS : LOAKE : VAN-DAL : BREVITT
ROMIKA : KILTIE K.

KIDPROOF CHILDRENS FITTING SERVICE

24 Hour Shoe Repairs

Tel. 225648



adidas®



IVOR COX

NEWSAGENT AND CIGARETTE VENDOR

PENTWYNMAWR

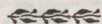
Thayers Ice Cream A Speciality

Individual Orders Taken

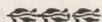
Telephone Newbridge 243303

CHRISTINA CROAD

Outside Catering



Weddings, Buffets and Dinner Parties
Catered for



Telephone Risca 612413

Best wishes from Lloyds Bank



At the sign of the Black Horse



**Lloyds
Bank**

Lloyds Bank Plc, 711 Lombard Street, London EC3P 3BS

SUPPORTERS NOTES

The Supporters Club "Player of the Month" award for December will be presented after today's game. Our sponsors for this is Newbridge Cubs R.F.C. The Cubs are presently being coached by Supporters Club Committeeman John Pople. They are having a very successful season having played 13 matches — Won 12 and drawn 1. They have seven players in the District Trial final being played on this ground tomorrow. Kick-off 2.15 p.m. (Weather permitting).

Congratulation to Newbridge captain Paul Turner on being selected by Crawshays to play in the Cathay Pacific World Sevens at Hong Kong in March. This, of course, means that we will be without the services of our talented fly-half for a few games.

The Supporters Club would like to extend a warm welcome to new squad member David Bidgood who makes his debut today after the third time of asking — A tough baptism.

David joins us from Ebbw Vales and should provide us with excellent cover at the front of the line-out since the departure of Terry Shaw to Cardiff and the absence, through injury, of Robert Beale.

I would like to remind Cardiff supporters that we have two shops selling refreshments throughout the match. One at the end of the stand and the cabin situated at the end of the terracing with tea, coffee, hot dogs, hamburgers, crisps and chocolate.

There is also a souvenir shop in the Club's main entrance with sweaters, ties badges, knickers, etc on sale.

S. D.

For the Attention of Supporters of Newbridge R.F.C.

YOU CAN OBTAIN THE FOLLOWING BENEFITS BY BECOMING A MEMBER OF NEWBRIDGE RUGBY FOOTBALL SUPPORTERS CLUB

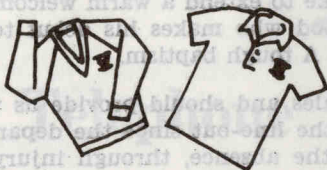
- * A free diary.
 - * 10% off goods from supporters shop.
 - * 10% off busfares to away matches.
 - * Free snowball prize draw at every home game — members must be present to claim immediately after the game.
- ALL THIS IS YOURS AND FOR ONLY —
£2.00 ADULTS £1.00 OAP/JUNIORS (under 16).

Join now by calling at the Supporters Shop upstairs on match days or contact one of the Supporters Committee.

HOW TO STAY WARM, SMART AND COMFORTABLE THROUGHOUT THE SEASON WHILE SHOWING YOUR SUPPORT FOR NEWBRIDGE R.F.C.

WEAR ONE OR MORE OF THE FOLLOWING ITEMS FOR MALE OR FEMALE SUPPORTERS. THEY CAN BE SEEN AT THE SUPPORTERS SHOP IN THE MAIN ENTRANCE OF THE CLUBHOUSE AND PURCHASED FROM MEMBERS OF THE SUPPORTERS COMMITTEE.

SWEATERS AND SHIRTS



For Sport and Leisure Wear with your own name printed if required

TIES



New Fashionable Ties for Club Members and Supporters

ALSO—T-SHIRTS, SCARVES

BOBBLE HATS, BADGES,

CAR STICKERS

NEWBRIDGE R.F.C. KNICKERS

For the Ladies or a present for the Girl Friend, Secretary, Sister or even the Wife.

SUPPLIERS TO NEWBRIDGE R.F.C. AND MANY OTHER RUGBY CLUBS AND ORGANISATIONS.

JENKINS KNITWEAR

TEL. ABERTILLERY (0495) 213916

NEWBRIDGE RUGBY FOOTBALL SUPPORTERS CLUB

President: S. J. DAWES, O.B.E.

Chairman: BILL HARRIS.

Vice-Chairman: JOHN POPLÉ.

Treasurer: EDDIE DAVIES.

Secretary: TERRY WIXEY.

P.R. & Asst. Sec.: STEVE DALE.

Committee:

JACK PHILLIPS, RUSSELL PHILLIPS, JIM REED,
DAVID WINDSOR, DAVID HARRIS, JOHN DOWDEN.

ALLAN J. SHARPE

PHOTOGRAPHIC SPECIALIST



DISCOUNT FILM DEVELOPING

PERFUMES :: COSMETICS

MEN'S TOILETRIES :: HEALTH FOODS



2 Victoria Terrace, Newbridge

H. H. Sheppard & Son LIMITED

PHOTOGRAPHIC SPECIALISTS

DISCOUNT FILM DEVELOPING

PERFUMES :: COSMETICS :: MEN'S TOILETRIES

THE SQUARE, CRUMLIN. GWENT

M.O.T.



ESSO PETROL

CASTLE GARAGE

N. J. CRIDDLE
TREGWILYM ROAD, ROGERSTONE
TEL. RHIWDERIN 895115

Quality Cars

WHOLESALE AND RETAIL NEWSAGENTS — CONFECTIONERS
TOBACCONISTS — TOYS AND GREETINGS CARDS

GLYN HUGHES

2 HIGH STREET,
NEWBRIDGE, GWENT
Telephone Newbridge 243200

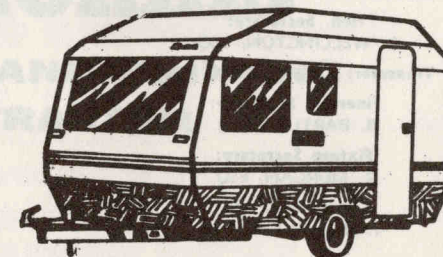
AGENT FOR NATIONAL EXPRESS

HUGE DISCOUNTS ON CARAVANS

Main Agents for:

**MARDON
CARAVANS**

TRIO AWNINGS



ACCESSORY SHOP

Largest selection in the area:
We stock just about everything ! !
including comprehensive range
Car Accessories

MASSIVE PART EXCHANGES

Excellent selection of New and
Used Caravans

**NEWBRIDGE
CARAVAN CENTRE**
NEW BRYNGWYN ROAD, NEWBRIDGE

Telephone: 0495 249242

NEWBRIDGE RUGBY FOOTBALL CLUB

Officers and Committee 1984-85

President: L. WALKER, ESQ.

Chairman: M. T. CROAD, ESQ.

Hon. Secretary:
B. WELLINGTON, ESQ.

Treasurer: T. J. BROOKS, ESQ.

Financial Secretary:
B. BARTLEY, ESQ.

Fixture Secretary:
R. MORGAN, ESQ.

Team Secretary:
T. BROWNING, ESQ.

Vice-Chairman: D. HUGHES, ESQ.

Medical Officers:
DR. F. FORBES, DR. I. MORRIS.

Hon. Club Dental Surgeon:
O. D. JONES, ESQ.

Hon. Club Solicitor:
G. THOMAS, ESQ.

Club Coaches:
K. WESTWOOD, E. PHILLIPS.

Club Captain:
PAUL TURNER.

Committee:

I. THOMPSON,
K. HUGHES,
G. WAY,
B. SMITH,
L. TURNER,
W. GREGORY,

G. THOMAS,
J. SHEPHERD,
C. WHITLOCK,
W. LEWIS,
R. MORGAN,

G. WILLIAMS,
O. D. JONES,
P. BRITTEN,
N. SHEMWELL,
R. TAYLOR,

K. EDWARDS,
H. WAY,
A. DEACON,
T. BROWNING,
R. DAVIES.

ESQUIR

MENSWEAR

120 HIGH STREET, BLACKWOOD

Tel: 0495 225883

*Stockists of Farah, Tootal,
Peter England,
Wrangler and other
leading makes.*

B. MORRIS

BUILDING AND PAINTING CONTRACTOR

**Fernbank,
17 Temperance Hill, Risca, Gwent**

TELEPHONE RISCA 613672

McCARTHY'S of RISCA

CELEBRATE 1984
HAVING COMPLETED 50Yrs.
OF SUCCESSFUL TRADING
IN RISCA.

**Suppliers of High-Class Green Grocery,
Fish, Dairy Products and Off Licence.**

∴ Thayers Ice Cream ∴

Open 9 a.m. until 9 p.m.
From October: Sunday 12 noon until 1 p.m.
and 7 p.m. until 9 p.m.

Tel. (0633) 612254

Wattsville Service Station

(J. L. EVANS)

ISLWYN ROAD, WATTSVILLE, GWENT

FREE FIT - Tyres (Cars and Motor Cycles) - Batteries (all sizes)

Exhausts (British and Continental)

UNDER THE FRANCHISE OF RICHARD DAVIES TYRES

PRE M.O.T. CHECK - FULL SERVICING FACILITIES

WELDING TO M.O.T. STANDARD

SELF DRIVE VAN HIRE AVAILABLE

TELEPHONE: CROSSKEYS 270287

WATTSVILLE SERVICE STATION

JOHN WILLIAMS CAR SALES

TELEPHONE: CROSSKEYS 272072

Arrid Extra Dry.
It makes success
smell sweeter.

Arrid Extra Dry.

Hard working anti-perspirant deodorant.

GIVE US A TRY!!

GWYN ROBERTS (INSURANCE BROKERS) LTD.

*We cater for all classes of insurance from the
private motorist to the largest business*

Reduced Rates For Over 50s

Special facilities available for high-risk motorists
including breathalyser victims.

Life insurance, endowments and mortgages
arranged.

Special rates for Datsun cars.

Protected no claim discount schemes available.

Special facilities for haulage contractors.

Special Rates for Local Government Police,
National Coal Board, Civil Servants.

Contact us now for further information

GWYN ROBERTS

(INSURANCE BROKERS) LTD.

16 Castle St., Caerphilly. Tel. Caerphilly 861116

(A HOWARD ROBERTS COMPANY)

NEWBRIDGE

Colours: RED

15. PETER GOODFELLOW
14. ALUN GLASSON
13. STEVE CRANDON
12. CHRIS MANLEY
11. CHRIS PHILLIPS
10. PAUL TURNER (Captain)
9. LLOYD DAVIES
1. GARY HEWLETT
2. PAUL RANSOM
3. BRANDON CRIPPS
4. DAVID BIDGOOD
5. SIMON HARRIS
6. PETER JONES
8. NIGEL WILKS
7. STEVE FLOWER

Reps: D. Hussey, J. Howells, M. Oliver,
J. Stokes, M. Short, S. Griffiths.

Newbridge R.F.C. would like to thank
WELSH BREWERS (Aberbeeg) LTD.
for sponsoring today's game.

Full Back
Right Wing
Right Centre
Left Centre
Left Wing
Outside Half
Inside Half
Forwards:

Referee: MR. J. GROVES, Tonyrefail.

Linesmen:

MR. P. BLAKE, Swansea

MR. J. D. JONES, Neath.

Next Home Game: PONTYPOOL
Friday, Feb. 1st, 1985. K.O. 7.15 p.m.

CARDIFF

Colours: BLUE AND BLACK.

15. PAUL REES
14. GERALD CORDLE
13. MARK RING
12. ALAN DONOVAN
11. ADRIAN HADLEY
10. GARETH DAVIES
9. TERRY HOLMES (Captain)
1. JEFF WHITEFOOT
2. ALAN PHILLIPS
3. IAN EIDMAN
4. KEVIN EDWARDS
5. HOWARD STONE
6. ROBERT LAKIN
8. JOHN SCOTT
7. GARETH ROBERTS

Reps: J. Souto, C. Collins, T. Crothers,
S. Cannon, C. Webber, M. Carrington.

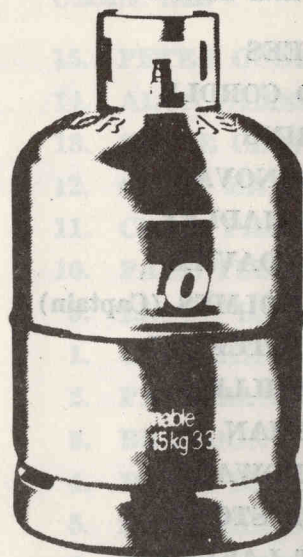
THE MATCH BALL FOR TODAY'S GAME HAS BEEN KINDLY DONATED BY THE JOHN CHARLES ROAD SHOW

I G Lintels are happy to support Newbridge R F C as they support thousands of homes throughout the UK & Europe



nothing shapes up to them.

I.G. Lintels Limited. Avondale Road, Cwmbran, Gwent. NP44 1XY. Tel: Cwmbran 68211/66811. Telex: 497048.



get the big one!

THERE'S MORE IN IT— AND MORE BEHIND IT!

- Calor's 15kg cylinders hold more gas than most competitive gas cylinders—so they last longer.
- New 'Switch-on' system make: cylinder changes easy—no spanners needed!
- Door-to-door delivery service available.

- Products you can trust—Calor Gas Laboratories (BSI recognised) test them for safety and performance—look for the Approved badge.
- Service and advice by fully-trained Calor Gas staff!



Come to us for Calor Gas—
BRITAIN'S OTHER GAS SUPPLY

WESTERN VALLEY GAS SERVICES

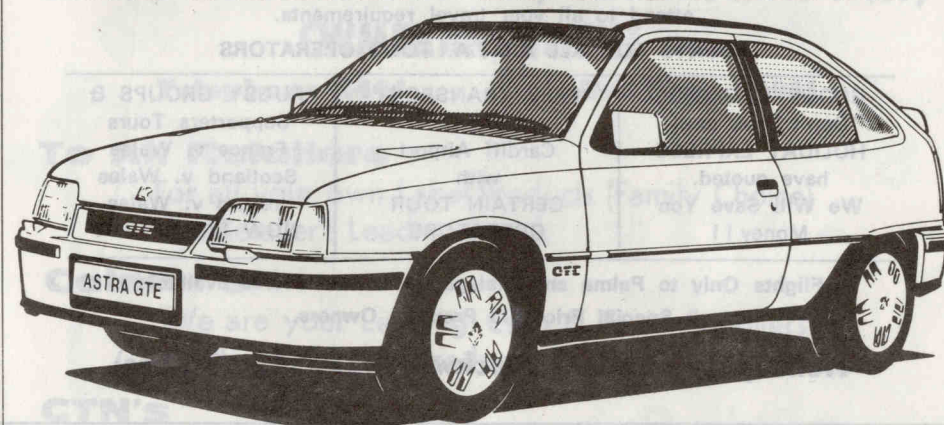
Prince of Wales Industrial Estate,

Abercarn, Gwent.

Telephone: Newbridge 245713



WE'VE LAUNCHED A NEW ROCKET.



Being the fastest car in its class, the new Vauxhall Astra GTE is never in one place for long.

It will take off from 0-60 in 8 seconds and is capable of a maximum speed of 126 mph.

In fact, about the only place you'll be able to catch one is in our showroom.

H. ELLIS WILLIAMS LTD.

The Garage, Newbridge, Gwent

Telephone 243254



VAUXHALL ASTRA

Remember, we got here first.

HOLIDAY EXPRESS

121 HIGH STREET, BLACKWOOD, GWENT.
TELEPHONE: 0495 224537



DAVID POWELL WELCOMES CLIENTS — OLD AND NEW — TO
HOLIDAY EXPRESS

Our experienced staff will be pleased to
attend to all your travel requirements.

AGENTS FOR ALL A.B.T.A. TOUR OPERATORS

GROUP BOOKINGS
Don't book until
HOLIDAY EXPRESS
have quoted.
We Will Save You
Money !!

FREE TRANSPORT
to
Cardiff Airport
with
CERTAIN TOUR
OPERATORS

RUGBY GROUPS &
Supporters Tours
France v. Wales
Scotland v. Wales
Ireland v. Wales
NOW BOOKING !!

Flights Only to Palma and Malaga — Lowest Prices available
Special Prices to Property Owners.

Holiday Express — Blackwood 224537 (5 lines)

NEWBRIDGE MINI RUGBY CLUB — FIXTURES 1984-85

Fixture Secretary: Mr. P. Tovey, Trinant Post Office, Trinant. Tel. Abertillery 214230

September

2 RISCA ... Home
9 IRONSIDES (Tournament) ... Away
16 PONTLLANFRAITH ... Home
23 IRONSIDES ... Away
30 WREXHAM (Tournament) ... Away

October

7 OAKDALE ... Away
14 BLAENAVON ... Home
21 PAIGNTON ... Home
28 CWMFELINFACH ... Away

November

4 DERI ... Away
11 MAESTEG ... Home
18 EBBW VALE ... Away
25 DOWLAIS ... Away

December

2 ABERTILLERY ... Away
9 NANTYGLO ... Home
16 ABERGAVENNY ... Away
23
30

January

6 DOWLAIS ... Home
13 IRONSIDES ... Home
20 PONTLLANFRAITH ... Away
27 RISCA ... Away

February

3 CAERLEON ... Away
10 EBBW VALE ... Home
17 BLAENAVON ... Away
24 DERI ... Home

March

3 PONTYCLUN ... Home
10
17 MONMOUTH ... Home
24 CWMFELINFACH ... Home
31 SWINDON ... Away

April

7 PONTLLANFRAITH (Tourn) ... Away
8 MONMOUTH (Tournament) ... Away
14 ABERGAVENNY ... Home
21
28 GWENT (Tournament) ... Away

BOOKER CASH & CARRY

GRANGE INDUSTRIAL ESTATE, LLANFRECHFA WAY,
CWMBRAN, GWENT

Telephone 4444

Butchery 73991

To All Retailers

For all your own Label Products (Family Choice)
The Retailer's Leading Brand.

Caterer's

We are your Leading Cash & Carry Suppliers.
With Top Quality Products, Backed by Low Prices.

CTN's

All Your Needs and Service at the Best Prices.

NONE FOODS

A Full range of Stationery, Glassware, Household Products, Gardening Products, Toys, Games, Catering, Needs.

WINES, SPIRITS DEPT.

Cigarettes, Tobacco also Beers, Lagers.

All Leading Suppliers Stocked
at Competitive Prices.

Hours of Trading:

Monday - 8.30 - 8 p.m. Thursday - 8.30 - 8 p.m.
Tuesday - 8.30 - 5 p.m. Friday - 8.30 - 5 p.m.
Wednesday - 8.30 - 5 p.m. Saturday - 9.00 - 1 p.m.

We do not Close for Lunch.

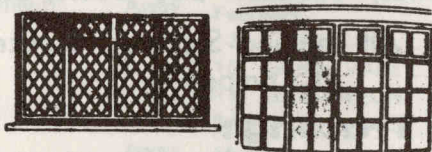
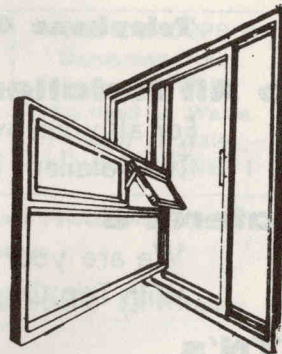
TRADE ONLY

We do not serve the General Public.

BLACKWOOD WINDOWS

NEWBRIDGE 243906

- ✦ uPVC & Aluminium
- ✦ Patio Doors
- ✦ Residential Doors
- ✦ Double Glazing
- ✦ All in Hardwoods & Softwoods
- ✦ Stairs
- ✦ Hardwood Purpose Made Windows



Cut out the Rep. and buy Direct.

Finance Available.

FREE QUOTATION ON REQUEST



Bryn Meadows Golf and Country Club

SCORES THE "POINTS"
SO "TRY" US

SET IN WOODED PARKLAND
WITH PANORAMIC VIEWS

Lounge Bar
Restaurant

Function Room — 14th Century Barn
Seating 80 plus

Suitable for:—
FUNCTIONS, PARTIES, CONFERENCES
DINNER DANCES.

SUPERB SETTING FOR WEDDINGS

Full A La Carte Menu
Excellent Bar Snacks
Sunday Lunches
Best Value in the area.

18 HOLE GOLF COURSE

SOCIETIES WELCOMED — AMPLE PARKING

So make your "Goal" Bryn Meadows
where a Friendly Team awaits you.

**Bryn Meadows Golf & Country
Club**

THE BRYN, Nr. HENGOED, MID GLAMORGAN
Telephone Blackwood (0495) 225590

ERNIE PUGH LTD.

BOOKMAKERS

Head Office: 6 Bedwas Road,
Maesycwmmmer. Hengoed, Mid-Glam.

Quotations given on all sporting events

THE COMPLETE BOOKMAKER FOR
OVER SIXTY YEARS

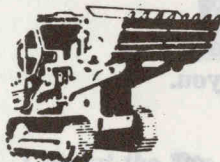
Telephone: Hengoed (0443) 813201-2-3-4

Beavis Plant Hire Ltd.

PERSONAL SERVICE AND ADVICE
PLUS EXPERIENCED OPERATORS
FOR OUR PLANT FLEET OF:



CATERPILLAR TRAXCAVATORS
CATERPILLAR BACK HOES
JCB EXCAVATOR - LOADERS
HYDRAULIC EXCAVATORS
LOW LOADER FACILITIES



Tel. Risca 612246

J. M. LEWIS Greengrocery

(JOCELYN'S)

High Street, Newbridge

FRESH FRUIT AND VEGETABLES DAILY

also

A LARGE SELECTION OF FROZEN FOODS

at

VERY COMPETITIVE PRICES

DELIVERIES DAILY

The Officers and Committee
of

NEWBRIDGE RUGBY FOOTBALL CLUB

wish to thank

AIWA®

(U.K.) LIMITED

for the kind support
received from them this season.

1984 NEWBRIDGE RUGBY FOOTBALL CLUB 1985

September

| | | | | | |
|----|-------------|-----|---|---|-------|
| 1 | Ebbw Vale | ... | H | W | 31-7 |
| 5 | Merthyr | ... | A | W | 4-15 |
| 8 | Bridgend | ... | A | L | 33-13 |
| 12 | Risca | ... | A | W | 12-21 |
| 15 | Aberavon | ... | A | L | 16-12 |
| 19 | Gloucester | ... | H | W | 17-9 |
| 22 | Met. Police | ... | A | L | 17-3 |
| 26 | Neath | ... | H | L | 16-17 |
| 29 | Moseley | ... | A | L | 25-16 |

October

| | | | | | |
|----|-------------|-----|---|---|-------|
| 3 | Bristol | ... | H | W | 24-14 |
| 6 | Saracens | ... | H | W | 28-21 |
| 13 | Abertillery | ... | H | W | 45-7 |
| 17 | Tredegar | ... | A | W | 3-19 |
| 20 | Pontypridd | ... | H | W | 22-3 |
| 24 | Newport | ... | A | W | 16-25 |
| 27 | Maesteg | ... | A | L | 16-15 |
| 31 | Cardiff | ... | H | W | 12-6 |

November

| | | | | | |
|----|-------------------|-----|---|---|-------|
| 3 | Bath | ... | A | L | 32-9 |
| 10 | S. Glam Institute | ... | H | W | 34-3 |
| 17 | Pontypool U (Cup) | ... | A | W | 21-54 |
| 23 | Bridgend | ... | A | H | |
| 28 | Crumlin | ... | H | W | 48-0 |

December

| | | | | | |
|----|---------------------|-----|---|---|-------|
| 1 | Crosskeys | ... | H | W | 27-9 |
| 5 | Glamorgan Wand. | ... | H | | |
| 8 | Ystalyfera (Cup) | ... | A | W | 3-20 |
| 15 | Australia v. BaBa's | ... | | | |
| 16 | Swansea | ... | H | W | 16-15 |
| 19 | S. Wales Police | ... | H | | |
| 22 | Penarth | ... | A | W | 9-32 |
| 26 | Bristol | ... | A | L | 34-3 |
| 29 | Pontypool | ... | A | L | 10-0 |

January

| | | | | | |
|----|------------------|-----|---|--|--|
| 5 | Llanelli | ... | A | | |
| 19 | Coventry | ... | A | | |
| | France v. Wales. | ... | | | |
| 26 | W.R.U. Cup | ... | | | |
| 30 | Crosskeys | ... | A | | |

February

| | | | | | |
|----|--------------------|-----|---|--|--|
| 1 | Pontypool | ... | H | | |
| 2 | E. v. F. S. v. I. | ... | | | |
| 6 | Newport | ... | H | | |
| 9 | Exeter | ... | A | | |
| 17 | Tredegar | ... | H | | |
| 16 | Wales v. England | ... | | | |
| 23 | W.R.U. Cup Maesteg | ... | H | | |

March

| | | | | | |
|----|-------------------|-----|---|--|--|
| 2 | Scotland v. Wales | ... | | | |
| 9 | Cheltenham | ... | H | | |
| 11 | Glamorgan Wand. | ... | A | | |
| 15 | Neath | ... | A | | |
| 16 | Wales v. Ireland | ... | | | |
| 20 | Ebbw Vale | ... | A | | |
| 23 | Aberavon | ... | H | | |
| 29 | Pontypridd | ... | A | | |

April

| | | | | | |
|----|-----------------|-----|---|--|--|
| 3 | Abertillery | ... | A | | |
| 6 | Wakefield | ... | A | | |
| 8 | Crosskeys | ... | A | | |
| 13 | London Welsh | ... | H | | |
| 17 | S. Wales Police | ... | A | | |
| 20 | Nottingham | ... | H | | |
| 26 | Penarth | ... | H | | |
| 27 | Cup Final | ... | | | |
| 30 | Bridgend | ... | H | | |

1984 Newbridge Cubs Rugby Football Club 1985

Chairman: D. HARRIS.

Secretary: J. NORMAN.

Vice-Chairman: J. BROWN.

Treasurer: B. STYLES.

Asst. Treasurer: K. PARFITT.

September

| | | | |
|----|---------------------|-----|------|
| 2 | ABERSYCHAN | ... | Away |
| 16 | GLAMORGAN WANDERERS | ... | Home |
| 23 | PONTYPOOL | ... | Away |
| 30 | CALDICOT | ... | Home |

October

| | | | |
|----|----------------|-----|------|
| 7 | PONTLLANFRAITH | ... | Away |
| 14 | DERI | ... | Home |

21

28

November

| | | | |
|----|--------------------|-----|------|
| 4 | TREDEGAR IRONSIDES | ... | Away |
| 11 | | ... | |
| 18 | HIRWAUN | ... | Away |
| 25 | NANTYGLO | ... | Home |

December

| | | | |
|----|------------|-----|------|
| 2 | CAERLEON | ... | Away |
| 9 | ST. ALBANS | ... | Home |
| 16 | ABERSYCHAN | ... | Home |
| 23 | | ... | |
| 30 | | ... | |

January

| | | | |
|----|---------------------|-----|------|
| 6 | GLAMORGAN WANDERERS | ... | Away |
| 13 | PONTYPOOL | ... | Home |
| 20 | CALDICOT | ... | Away |
| 27 | | ... | |

February

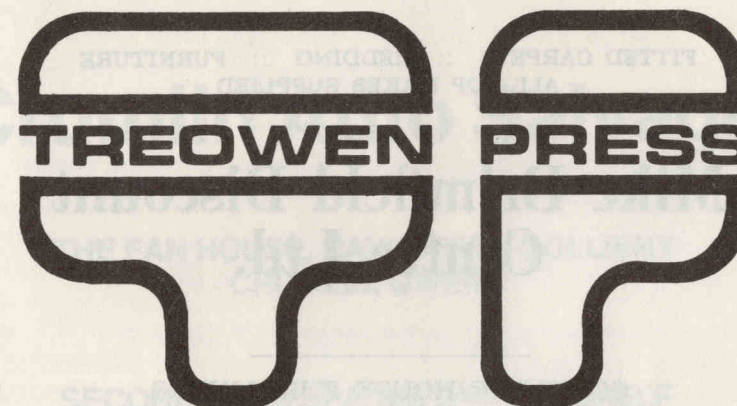
| | | | |
|----|----------------|-----|------|
| 3 | PONTLLANFRAITH | ... | Home |
| 10 | | ... | |
| 17 | | ... | |
| 24 | | ... | |

March

| | | | |
|----|--------------------|-----|------|
| 2 | TREDEGAR IRONSIDES | ... | Home |
| 9 | | ... | |
| 16 | HIRWAUN | ... | Home |
| 23 | NANTYGLO | ... | Away |
| 30 | | ... | |

April

| | | | |
|----|------------|-----|------|
| 6 | CAERLEON | ... | Home |
| 13 | ST. ALBANS | ... | Away |
| 20 | | ... | |



The Complete Printing Service
to
INDUSTRY
&
OTHER ORGANISATIONS

Nursery Buildings, Crown Street, Crumlin
Tel. Newbridge 244083

FITTED CARPETS :: BEDDING :: FURNITURE
ALL TOP MAKES SUPPLIED

Mike Brimfield Discount Centre Ltd.

COMPLETE HOUSE FURNISHERS

2/3 Institute Buildings, Crumlin, Gwent.
Tel. Newbridge 243428

GLYN WILLIAMS TRAVEL

Coaches 12 - 53 Seaters



24 Hour Service

Telephone Crosskeys 270489

(STD Code 0495)

RISCA HOUSE, WAUNFALOR GARDENS,
CROSSKEYS, GWENT NP1 7AL

Garage

Telephone Crosskeys 271536

(STD Code 0495)

Crumlin Auto Salvage

THE FAN HOUSE, NAVIGATION COLLIERY
CRUMLIN, GWENT

SECOND HAND SPARES OFF THE SHELF

Telephone: (Day)
NEWBRIDGE 245384

Telephone: (night)
NEWBRIDGE 244744
ABERTILLERY 3796

SERVICING * MECHANICAL REPAIRS * BODY REPAIRS * M.O.T.s.
COMPUTERISED SUN TUNING * 24 HR. RECOVERY

FLYOVER GARAGE ABERBEEG

LATE NIGHT M.O.T.s
TUESDAY & THURSDAY 8 A.M. - 8 P.M.

TELEPHONE (Day):
0495 214383

TELEPHONE (Night)
0495 244744
0495 247216

FOR ALL YOUR BUILDING MATERIALS
DELIVERY FREE

Abercarn Builders Merchants

Also Comprehensive D.I.Y. Centre

OPEN 7 DAYS A WEEK
MIXER HIRE

VARMANS YARD,
ABERCARN, GWENT
NP3 5GS.

Telephone:
NEWBRIDGE 245270
(STD 0495)



FAMILY BUTCHER



Clarry Mathews

PURVEYOR OF HIGH CLASS MEAT

OUR SPECIALITIES INCLUDE:
PIES, PASTIES, SAUSAGE ROLLS,
HOME COOKED PORKS AND HAMS,
FANCY CHEESES.

DAILY DELIVERIES

14 VICTORIA TERRACE, NEWBRIDGE
Tel. 243362

Now, Severnside bring you Datsun Fork Lift Trucks!

There's a new partnership in Cwmbran where Severnside Mechanical Handling Ltd., have been appointed main dealers for the full range of Datsun Fork Lift Trucks.

With the Datsun name on a fork lift truck, you'd be right to expect a great deal.

Such as outstanding operational reliability and economy as well as a very reasonable starting price.

After all, these are some of the qualities which have made Datsun the fourth largest vehicle manufacturer in the world, and Britain's largest car importer for five years.

And backing every Datsun fork lift truck is the vast Datsun UK organisation with its huge service and spares resources.

The trucks themselves are available

with diesel, battery petrol/LPG engines and can lift from 2000 lbs to 6000 lbs at 24 inch load centres. The following items are all included as standard equipment: 42 inch forks, load guard, back rest, six roller masts, J-lug tyres, tow pin, tonneau cover, upswept exhaust and mirrors (where applicable), adjustable seat, reversing buzzers, turn signals and lights.

A variety of other attachments and substitution forks are also available.

12 Month Factory Warranty.

Every truck carries a 12 month full Datsun factory warranty; unlike most other makes which only cover you for six months.

So if you're in business where you need some tough reliable trucks, come to Severnside and take a look at those with one very important addition; the Datsun name.



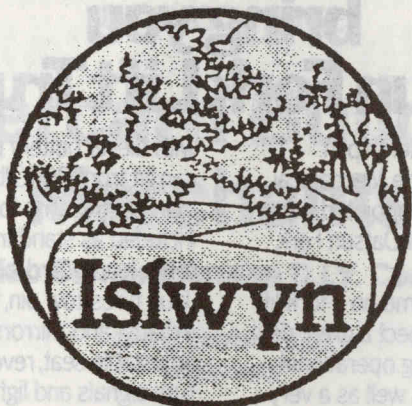
Severnside Mechanical Handling Ltd.

Depots at:-

CWMBRAN
Telephone 69355

SWANSEA
Tel. 798920, 798921





Discover Islwyn in the beautiful Valleys of Wales

.....

Walks, Medieval Churches, Scenic Drives and
Marvellous Views all add up to a great place
to visit for a day or a weekend.

.....

For further information please write to Tourist
Information, Islwyn Borough Council, Civic Centre,
Blackwood Road, Pontllanfraith, Blackwood, Gwent,
NP2 2YW.

VALLEY CATERING SUPPLIES

Distributors & Operators of Food &

Beverage Vending Machines

Sales & Service

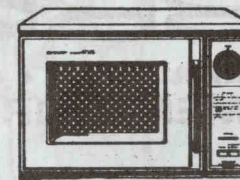
Suppliers of Ingredients

& Microwave Ovens

PANASONIC

NATIONAL

SHARP



**Produce Your Programme for Discount Off
Manufacturers Prices**

**UNIT 26 LLANTARNAM INDUSTRIAL PARK,
CWMBRAN, GWENT NP44 3AW**

Tel. (06333) 66653 - 60600

NEWBRIDGE RUGBY FOOTBALL CLUB

Players Leading Appearance Chart for the Season:

I feel that many players would now be knocking on around 30 appearances so far this season but for the cancellation of five of our matches due to bad weather.

| | | | |
|----------------------|----|------------------------|----|
| PETER JONES | 23 | STEVE CRANDON | 15 |
| BRANDON CRIPPS | 22 | WAYNE BOW | 14 |
| PAUL TURNER | 22 | GARY HEWLETT | 14 |
| CHRIS PHILLIPS | 22 | STEVE FLOWER | 13 |
| JIM STOKES | 19 | STUART GRIFFITHS | 13 |
| SIMON HARRIS | 19 | MARTIN SHORT | 13 |
| LLOYD DAVIES | 18 | JEFF HARRIS | 13 |
| CHRIS MANLEY | 18 | LEN SIMS | 12 |
| PETER GOODFELLOW ... | 18 | KEVIN WEAVER | 12 |
| ALUN GLASSON | 17 | PAUL RANSOM | 12 |
| DAVID HUSSEY | 16 | ROBERT BEALE | 11 |
| ANDY STIMPSON | 15 | ALAN MORGAN | 10 |

GIBBON

building • industrial • domestic
EQUIPMENT HIRE Ltd.



THE NEW ROCK FOUNDRY, HIGH STREET,
BLACKWOOD, GWENT.

Telephone Blackwood 226856 - 222708 - 222220

Lansing Henley

Forklift Trucks

Sale

Hire

&

Leasing



Capacities
FROM 1,000 kg
to 40,000 kg
ELECTRIC, L.P.G.
I.C. ENGINED
MACHINES

Lansing Henley Limited

Blackwood, Gwent, NP2 2XF.

Telephone: Blackwood 225555



GRYPHONN

CONCRETE PRODUCTS

**Concrete Slabs, Screen Blocks
& Rock Face Blocks Available At:**

OLD MILL WORKS, GELLIGROES,
PONTLLANFRAITH, GWENT,

BLACKWOOD
227331 & 227356

**Concrete, Insulation and
Clinker Blocks To B.S.S.
Range of Sizes, Strengths &
Face Finishes In All Sizes
Mechanical Off Loading
Available At:**

VIADUCT WORKS, NEW RD.
HENGOED, MID GLAM.

HENGOED
(0443) 812080

CWMBRAN TRAVEL

1 The Arcade, Cwmbran, Gwent
I.A.T.A. - A.B.T.A.
Tel: 66011

**Contact our Rugby Section now
for the best possible arrangements for
your rugby tours and all
your TRAVEL requirements**

Also at

COLUMBIA TRAVEL LTD.
15 Victoria Terrace, Newbridge
Tel: 243787