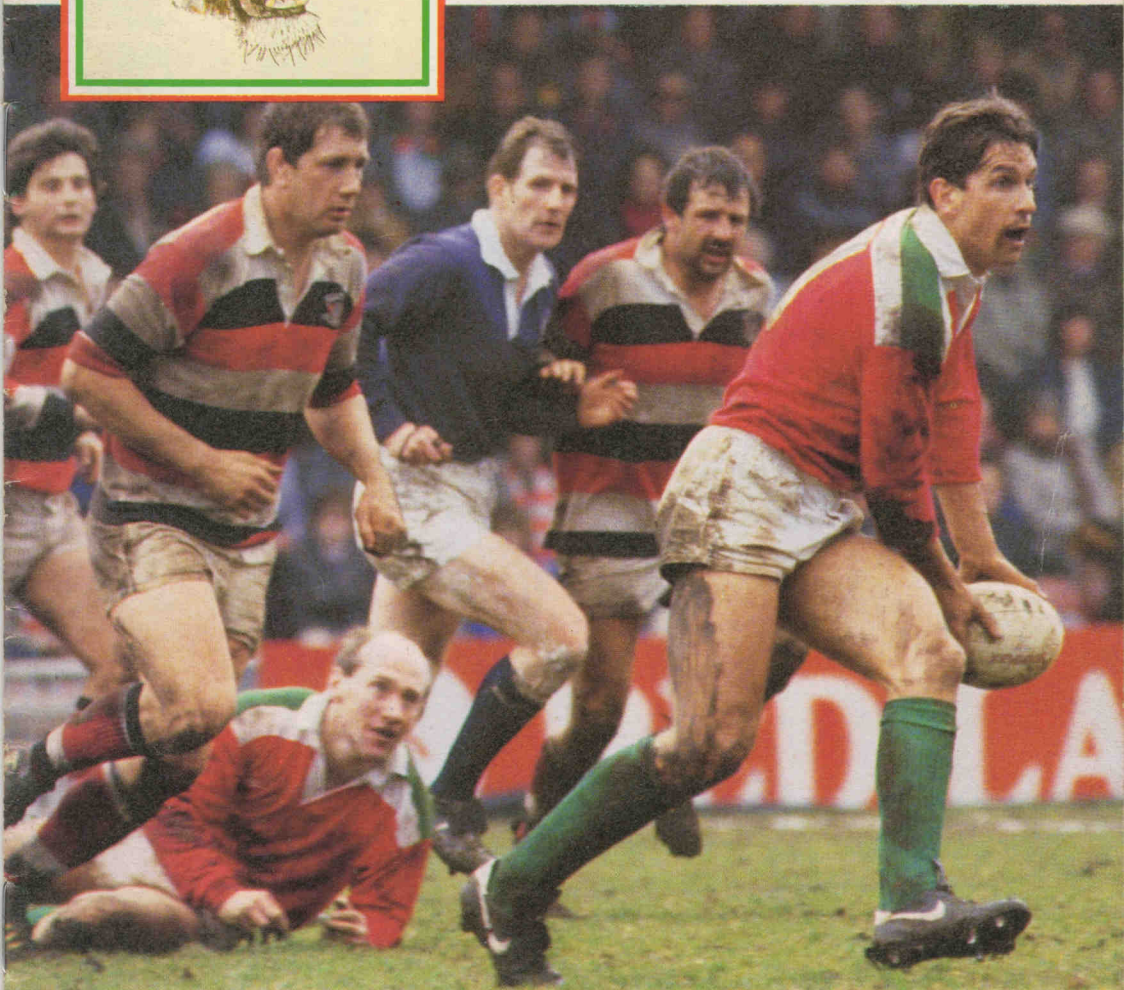




Leicester

FOOTBALL CLUB 1985-6



TIGERS v CARDIFF

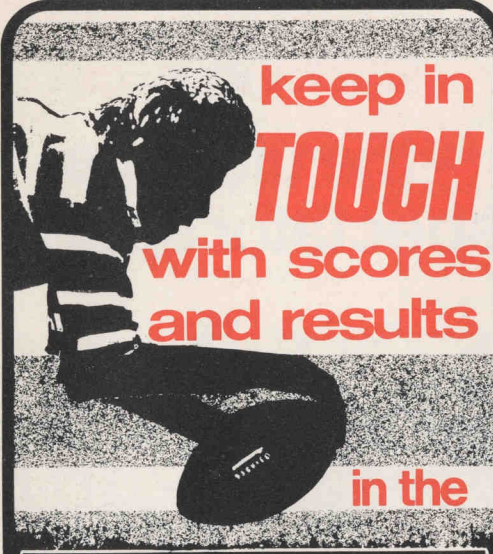
SATURDAY NOVEMBER 2ND 1985 — K.O. 3.00 P.M.

OFFICIAL PROGRAMME 30p

PATRONS **IND COOPE**

1ST XV

IND COPE
INN KEEPING
WITH WHAT YOU WANT

keep in
TOUCH
with scores
and results
in the

MERCURY

Join the First Team

save with...



Head Office: EARL SHILTON (Tel. 44422)
BARWELL · HINCKLEY · LEICESTER
NUNEATON · WIGSTON
General Manager: John W. Gilbert B.Sc (Eng).

DOWNES DYES

Suppliers of preparation products, dyes, auxiliary and finishing materials for textile and leather processing.

Extensive technical service available.

DOWNES DYES & AUXILIARIES

84, Barkby Road,
Leicester LE4 7LF

Tel: Leicester 741616

Sole agents for Hispano Quimica S.A., Barcelona, Spain.

TheBRADGATE ARMS·Cropston·



FreeHouse

RUDDLES · SAMUEL SMITHS · M&B ·
BURTON ALE (IND COOPE) ·
BASS

WARM SKITTLE ALLEY FOR PARTIES

EARLY EVENING OPENING 5.30pm

HOT LUNCHES MON – SAT.

LARGE GARDEN

CHILDREN'S ROOM

'PHONE LEICESTER 362120



WALKERS CRISPS

**-the ultimate
spectator sport!**



Post House Hotel

TRY THE POST HOUSE HOTEL AND YOU'LL BE CONVERTED
We've got a game plan for all occasions

FRIENDLY BARS – The place to meet before and after the match.
THE NEW WYVERN RESTAURANT – For business or pleasure you
can be sure of that extra attention

Open: 12.30 to 2.30 Sun to Fri 7.00 to 10.00 Mon to Sat
7.00 to 9.00 Sunday

Best value family Sunday Lunch in Leicester
Under 14 years are half price and under 5's no charge

★ ★ ★ ★ ★

COFFEE SHOP – where families are truly welcome
We open all day 10.00am to 10.30pm
Grills, Snacks & Salads plus Childrens Menu

Wedding Receptions, Dinner Dances, Conferences and Exhibitions
Make the Post House Hotel your local

Post House Hotel
Braunstone Lane
LEICESTER LE3 2FW

Tel: (0533) 896688

General Manager Peter Macnamara
TEAM COACH

NICHOLAS DUCKER & CO

**SPECIALIST RETAIL
PROPERTY
CONSULTANT**

ACQUISITIONS • RENT REVIEWS
DISPOSALS • VALUATIONS
DEVELOPMENTS • INVESTMENTS

IN THE EAST, WEST &
NORTH MIDLANDS

97 LONDON ROAD
LEICESTER · LE2 0PF
TELEPHONE: (0533) 558356

first on the air...still No1

RADIO LEICESTER

follow the tigers at home & away

358m 837KHZ 95.1VHF



The Langston Arms

Church Langton Near Market Harborough

Telephone 085 884278

Superb lunches and evening meals 7 days a week



The Navigation Inn

Kilby Bridge Leicester

Telephone 811932

Don't be Vague.
It's always been Haig.



Action from last Saturday's 18-10pts victory against Swansea.



Nick Youngs in the thick of it once again as Tigers launch another attack.

Les Cusworth and Barry Evans tackling Hopkins, one of Cardiff's International centres



Cover Photograph by Neville Chadwick
Colour Reproductions by Cavalier Reproductions
Black and white photography, Leicester Mercury
Phototypeset by Studio Photoset
Paper Graphic Blade Art, supplied by Link Paper
Printed in England by Impress (Leicester) Ltd.

NEW FORDS FROM

SMITH MILLINGTON

*** SALES, SERVICE
 * BODY REPAIRS
 * CONTRACT HIRE
 * LEASING**

CONVERT TO A FORD

FORD GIVES YOU MORE

SMITH MILLINGTON

LEICESTER ROAD MARKET HARBOUROUGH
MKT. HARBOUROUGH
 Tel. 66688

**CRISTAL
 INSULATING
 GLASS CO. LTD.**

MANUFACTURERS OF
 SEALED DOUBLE GLAZED UNITS
 &
 GLASS MERCHANTS

*CLEAR & PATTERNED *SAFETY GLASS

*LEADED *GEORGIAN BAR

*QUALITY PRODUCTS

*FULLY GUARANTEED

*FAST DELIVERY

9 WILSON Rd.,
 SOUTH WIGSTON,
 LEICESTER.

TEL: (LEICESTER) 777765

TRY OUR CARS
"YOU'LL BE CONVERTED"

BATCHELOR BOWLES & Co Ltd.



Vauxhall-Opel Cars and full range of Bedford Commercial Vehicles.
 Sales, Service, Parts, Leasing, Self Drive Car Hire, Trailer Hire, Body Repairs.
 Always a large selection of Quality Used Cars.

Freemens Common Road, Aylestone Road, Leicester. Tel: 557567
 39 Derby Road, Hinckley. Tel: Hinckley 636551

CITROËN 

LEE-BYRON LTD

SUZUKI

Lee Circle, Leicester. Tel: 25285

Cars & Commercial

For the full range of new Cars and Commercial and a selection of Used Vehicles

Leicester

1260 KHz, 238 Metres Medium Wave

Keeping you 'in touch'

**Leicester
 SOUND**

1260 KHz, 238 Metres Medium Wave,
 97.1 MHz. v.h.f. Stereo

**“ Whatever the size
 we've got a system
 to suit your
 Business ”**

**VISIT OUR LEICESTER SHOWROOM
 AND SEE FOR YOURSELF.**

Ring Kate or Thomas
 on Leicester 534433 for details.

British
TELECOM

LEICESTER

15

9

Colours: Scarlet, Green and White

- | | | |
|---|----------------------|--------------|
| O | W. H. Hare* | Full Back |
| N | B. Evans | Right Wing |
| M | P. W. Dodge* | Centre |
| L | I. Bates | Centre |
| K | C. Dexter | Left Wing |
| J | L. Cusworth (Capt.)* | Fly Half |
| I | N. Youngs* | Scrum Half |
| A | S. Redfern | Prop |
| B | C. Tressler | Hooker |
| C | W. Richardson | Prop |
| D | J. Davidson | Lock |
| E | M. Foulkes-Arnold | Lock |
| F | J. M. Wells | Wing Forward |
| G | D. Richards | No. 8 |
| H | R. Tebbutt | Wing Forward |

Repl: T. Buttimore L. Richardson

1 SMITH

* Internationals

TODAY'S MATCH AND BALL IS SPONSORED BY

*Ind Coope
&
Allsopp
Limited*



CARDIFF

20

3

Colours: Cambridge Blue and Black

- | | | |
|----|-------------------------|--------------|
| 15 | M. Rayer | Full Back |
| 14 | G. Cordle | Right Wing |
| 13 | A. Donovan * HADLEY | Centre |
| 12 | M. Newman C JONES | Centre |
| 11 | A. Hadley * CARRINGTON | Left Wing |
| 10 | W. G. Davies * D BARRY | Fly Half |
| 9 | T. Holmes* | Scrum Half |
| 1 | J. Whitefoot * | Prop |
| 2 | A. J. Phillips (Capt.)* | Hooker |
| 3 | I. Eidman* | Prop |
| 4 | K. Edwards | Lock |
| 5 | R. Norster* | Lock |
| 6 | M. Teague* | Wing Forward |
| 8 | J. Scott * RLAKIN | No. 8 |
| 7 | T. Carothers | Wing Forward |

16 D. GIBSON

17 I. GREENSLADE

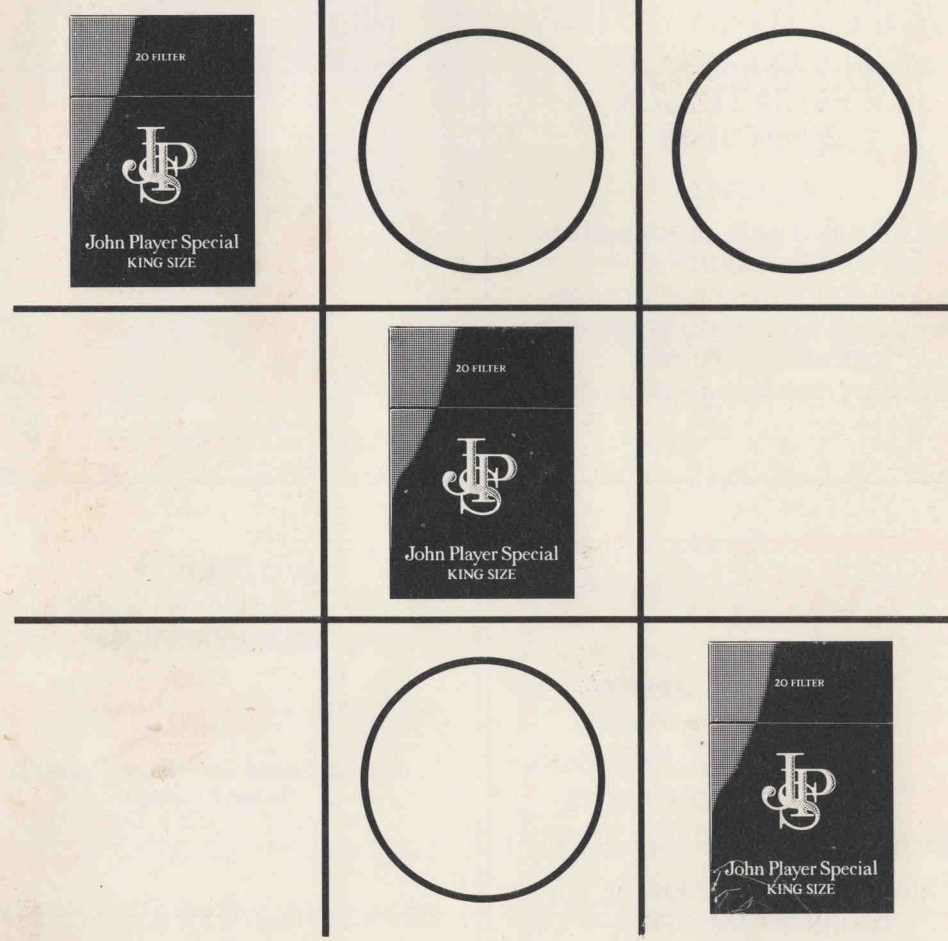
Referee: Mr. F. Howard — Liverpool Society

T. WILLIAMS

JPS2DLTR

MIDDLE TAR As defined by H. M. Government
DANGER: Government Health WARNING:
CIGARETTES CAN SERIOUSLY DAMAGE YOUR HEALTH

Black a winner



ESTABLISHED 1890

Bodycot & Brewin Ltd

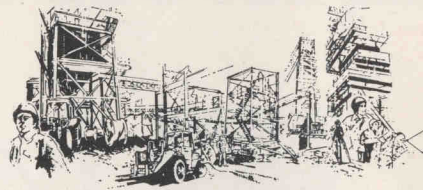
**PRINTERS & COMMERCIAL
STATIONERS**

29 - 31 CANK STREET
LEICESTER LE1 5GX

Telephone 27819

QUALITY PRINTING - BOOKBINDING
DIE STAMPING
STATIONERY & OFFICE SUNDRIES
WEDDING AND MOURNING STATIONERY
RUBBER STAMPS
TWINLOCK LOOSE-LEAF EQUIPMENT

EXTENSIVE CONTRACTS
IN RECENT YEARS HAVE
BEEN WORLDWIDE AS
WELL AS THROUGHOUT
THE U K



SPECIALISTS IN THE DESIGN & DETAILING
OF STRUCTURAL STEELWORK, QUARRY
PLANT, MATERIALS HANDLING &
INDUSTRIAL STEEL STRUCTURES

PAGE CONSULTANTS LTD.



91 LONDON ROAD LEICESTER LE2 0PT TEL. 0533 555756

WISH LEICESTER TIGERS CONTINUED SUCCESS



BARTON-KNOTT TRAVEL

**BARTON-KNOTT TRAVEL
TRAVEL AGENTS**

THE NOOK,
ANSTEY,
LEICESTER LE7 7AY

Telephone (0533) 351522

CLAYTON BROS (COACHES) LTD

EXCURSIONS
PRIVATE
HIRE
CONTRACTS



BRITISH & CONTINENTAL
TOURS ORGANISED.

For Personal Service From
The Small Company with
The BIG Reputation.

TEL 739818 & 736651

or After 6pm **415672**
104 Gwendolen Road.

INSURANCE -

THE BEST WAY

H. & L. RIDGWAY

(Amalgamated with Black, Portch &
Swain Limited)

INSURANCE BROKERS TO THE
'TIGERS'

(Members of the British Insurance Brokers
Association)

1 WEST WALK
LEICESTER
Tel: (0533) 553356
553376

FOR ALL
YOUR FRESH MEAT
REQUIREMENTS

F. E. SWINFEN AND SON

WHOLESALE & RETAIL BUTCHERS
HIGH STREET, CROFT
TEL: SUTTON ELMS 282231

HIGHEST QUALITY
HOME-KILLED
BEEF, PORK AND LAMB

T. R. PRICE & CO.

Joiners and Builders

PERSEVERANCE WORKS
BRAZIL STREET
LEICESTER

REPAIRS IN ALL BRANCHES
OF THE TRADE

Tel: Leicester 546520

First Fifteen Fixtures and Results

1985

September

7	A	Bedford	Won 52-6
10	H	NUNEATON	Won 30-12
14	H	BATH	Lost 15-40
18	A	Birmingham	Won 33-6
21	A	London Welsh	Won 38-12
28	A	Harlequins	Won 19-9

October

5	H	COVENTRY	Won 42-16
12	A	Richmond	Won 27-13
19	A	Northampton	Won 14-6
23	A	Oxford University	Won 32-7
26	H	SWANSEA	Won 18-10

November

2	H	CARDIFF	
9	A	Cambridge University	
12	A	Nottingham	Tues 7.15pm
16	H	WASPS	
23	A	Moseley	
30	A	Saracens	

December

7	H	GLOUCESTER	
14	A	Blackheath	
21	H	BRISTOL	
28	H	BARBARIANS	Sat 2.45pm

1986

January

4	A	Headingly	
11	A	Gloucester	
18	H	BEDFORD	
25		John Player Cup Third Round	

February

1	H	LONDON SCOTTISH	
8	A	Newport	
15	A	Orrell	
22	H	NORTHAMPTON	JPC Round
26	H	ROYAL NAVY	Wed

March

1	H	HARLEQUINS	
8	A	Coventry	JPC Round
11	H	LOUGHBOROUGH STUDENTS	Tues
14	H	ROYAL AIR FORCE	Fri
22	H	SALE	JPC Round
29	A	Neath	
31	A	Pontypool	Easter Monday

April

5	H	WATERLOO	
12	A	Bristol	
19	H	GOSFORTH	
26	H	MOSELEY	JPC Round

Evening matches at Welford Road kick off at 7.15pm

Extra First Fifteen Fixtures and Results

1985

September	7	H	BEDFORD	Won 46-9
September	14	A	Rosslyn Park	
September	17	H	MODERNS	Tues 7.15pm
September	21	H	HARLEQUINS	Lost 18-19
September	28	H	WASPS	Lost 19-21
October	1	A	Nuneaton	Tues 7.15pm
October	5	A	Coventry	Lost 7-23
October	12	A	London Scottish	Won 24-19
October	19	H	NORTHAMPTON	Won 40-17
October	26	A	London Irish	Lost 17-18
November	2	A	Cardiff	
November	6	H	OXFORD UNIV.	Wed 7.15pm
November	9	H	CAMBRIDGE UNIVERSITY	
November	16	A	Richmond	
November	23	H	MOSELEY	
November	30	H	SARACENS	
December	7	A	Gloucester	
December	14	H	NOTTINGHAM	
December	21	H	DERBY	
December	28	H	TAMWORTH	

1986

January	4	H	HEADINGLY	
January	11	H	GLOUCESTER	
January	18	A	Bedford	
January	25	A	Leicester University	
February	1	H	VIPERS	
February	8	H	LONDON WELSH	
February	15	H	NORWICH	
February	22	A	Northampton	
March	1	A	Nottingham	
March	8	H	COVENTRY	
March	15	A	Chesterfield	
March	22	H	SALE	
April	5	H	WATERLOO	
April	12	H	BRISTOL	
April	24	H	LEICESTER THURSDAY	
April	26	A	Moseley	

Swifts Fifteen Fixtures and Results

1985

September	7	H	BEDFORD	Won 34-6
September	14	A	Sleaford	
September	21	A	Coalville	Won 16-3
September	28	A	Nuneaton	Won 21-3
October	5	A	Coventry	Lost 12-13
October	12	H	NOTTINGHAM	Drawn 9-9
October	19	H	NORTHAMPTON	Won 31-3
October	26	H	RUGBY 2	Won 38-11
November	2	A	Lutterworth	
November	16	H	SYSTON	
November	23	A	Moseley	
November	30	H	SARACENS	
December	7	H	MELTON	
December	21	A	Derby	

1986

January	4	H	HEADINGLY	
January	18	A	Bedford	
January	25	H	KESTEVEN	
February	1	A	Nottingham	
February	8	A	Old Bosworthians	
February	15	H	NORWICH	
February	22	A	Northampton	
March	1	H	WEST LEICESTER	
March	8	H	COVENTRY	
March	15	A	Chesterfield	
March	22	A	Stewarts & Lloyds	
April	5	A	Daventry	

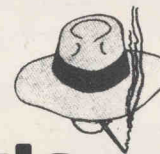
TODAY'S SPONSOR

*Ind Coope
& Allsopp Limited*

Ind Coope are delighted to be sponsoring today's match against Cardiff. All at the Club would like to thank Ind Coope for their continued support of 'The Tigers' in the form of match sponsorship and, more importantly, as patrons of the club.

Ind Coope are major contributors to the sporting scene in Leicester, and, as Jim Race, their Managing Director, explained . . . "our head office is in Leicester and we have some 200 pubs throughout the county of Leicestershire. It is a sensible commitment, I feel, to support our customers, pubs and, of course, the community, to the best of our ability. Very much like the Tigers, we strive to be the best at whatever we do — satisfying our customers and running pubs — very much in the way 'The Tigers' play honest, open rugby football to satisfy their appreciative crowds. We are delighted to be associated with an established and genuine club like Leicester Rugby Football Club. I am sure, like Ind Coope, they are going to have a very successful season."

Barker's ifs and buts



Cardiff:

Founded: 1876

Ground: Cardiff Arms Park

For the Record:

Leicester's biggest win: 16-3 (Cardiff) 1919
Leicester's best home win: 15-7 1927
Leicester's highest home score: 29-24 1983
Cardiff's biggest win: 50-5 (Cardiff) 1947
Cardiff's best win at Leicester: 24-0 1903
Last year Cardiff won 47-21 at Cardiff.

Cardiff have a most formidable record against Leicester stretching back to the first meeting between the clubs in 1889. In 75 matches, Tigers have only emerged victors on 15 occasions, and one of these the 16-3 victory of 1919 being the best and and only win on Welsh soil. Leicester have made 38 trips to Wales, and except for the 1919 game have been well beaten in most games. Cardiff are the only side to have ever scored 50pts against Leicester (1947) and last season their 47-21 victory gave them the second ever highest score. Had they known this fact I am sure Cardiff would have really turned on the

power in the last few minutes. However, Leicester were not the only club to suffer at the Arms Park last year as Cardiff had an unbeaten home record, the first time they had achieved this for 37 years. Cardiff also topped the thousand point mark with Gareth Davies leading the points scorers with 365pts. Wingers Adrian Hadley (17), and Gerald Cordle (16) led the try scorers in the backs, but Welsh captain Terry Holmes pushed them both hard by grabbing 17 tries. Their 1984/85 season ended in a one point defeat in the Schweppes W.R.H. Challenge Cup by Llanelli (15-14), and even then they scored two tries to one.

Cardiff have started this campaign where they left off last season and today will be their 18th game to date. Their only defeat so far against English opposition was a week last Wednesday going down 16-13 at Bath. They have beaten Coventry 13-20, Wasps 20-12, and last Saturday Harlequins 16-38 after trailing 16-3 at one stage. They have also had an excellent 31-15 win over the Fiji XV, and will be keen to revenge their last visit to Leicester when the Tigers triumphed 29-24.

Leicester will also be confident after last week's excellent display against Swansea. What a pleasure to see a real rugby match, where the crowd appreciated both the tactical and defensive qualities shown by both sides. When points are being scored as in a basketball match something must be wrong and the game becomes artificial. This afternoon's match will definitely not acquire this label even though I hope a lot of good tries are scored.

The Tigers make one enforced change from last week's team. Colin Dexter takes over on the left-wing for the injured Kevin Williams who damaged knee ligaments playing for the Irish Wolfhounds on Sunday. Otherwise Leicester are at full-strength which makes for several cracking comparisons. We have the English pairing of Nick Youngs and Les Cusworth against Terry Holmes and Gareth Davies, and Dean Richards against John Scott at No. 8, plus the kicking duel of two of the world's finest in Dusty Hare and Gareth Davies.

Attendances have really been tremendous this season, and the figures continue to improve. Bath (5,100), Coventry (5,200) and Swansea saw our biggest gate to date with 6,007. You can argue about whether you were one of the seven, but this afternoon's attendance should top the 7,000 mark hopefully, but will not get anywhere near the 15,000 that saw the 1922 Leicester v Cardiff game.

The Tigers Sports Quiz for 1986 will get under way at the end of January. Teams wishing to enter can get an entry form at the Office or see me personally. All you need are four sports mad people per team.

The festive spirit it seems is once again upon us and the Club will be holding a Christmas Disco in the Clubhouse on December 21st 8.30-Midnight. Tickets are £3 which includes supper and can be obtained from Tony Hopkins, super-sub Angus Collington, or at the Office.

Our next home match is yet another real cracker. The fixture list this year, although disappointing in the number of away games, has certainly given us the cream of quality home opposition.

Next Home Game:

Saturday November 16th v Wasps. K.O. 3.00pm.

SOCIAL EVENT

Race Night, Wednesday 27th November, at the Leicester Racecourse, London Road.

Enclosure opens 7.00p.m., 1st Race 7.30.

Tickets £3.00 including Buffet.

Available from: Kevin Andrews, Chris Tressler, Wayne Richardson.

HENRY SPOKES COPYING SERVICES

122 LONDON ROAD, LEICESTER

Telephone: 543543

Leicester's Premier Print Shop

For all your Brochures, Leaflets, Price Lists, Catalogues.

Our staff are friendly, competent and helpful. Call in this week and we will be pleased to quote, or **Telephone Today.**

INSTANT A1 COPIES

If you have any problems with large size document reproduction call in and see us for a service that is unique in the town.

LOW COST COPIER PAPERS

Daily deliveries of all paper sizes, Quarto to A3. 14 different colour tints, A4 to A3.
Copier labels and transparencies.

Phone today for full price list with quantity discounts, and colour swatch.

543543

Give us a try today – We can do a great deal for you.



The Belmont Hotel

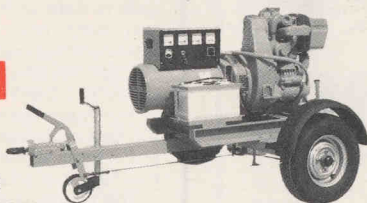
De Montfort Street, Leicester LE1 7GR.

Tel: 0533-544773. Telex: 34619

Coronet EM Limited

CORONET

Manufacturers of
Generating Plant
Pumping Equipment
Blockmaking Machinery

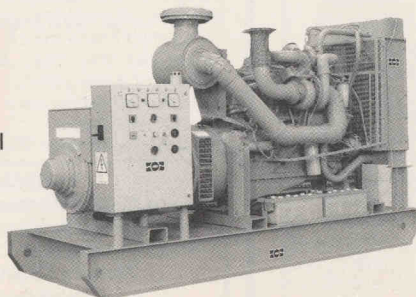


CORONET EM LTD.

East Goscote Ind. Estate
East Goscote
Leicester LE7 8XJ
Telephone Leicester 606321
Telex 341974 COROEM G



Marine and Industrial
Generators
4 – 1000 KVA



MIG GROUP LTD.

East Goscote Ind. Estate
East Goscote
Leicester LE7 8XJ
Telephone Leicester 607265
Telex 341012 MIGLE



BRITISH AIRWAYS

The world's favourite airline

For all your reservations and enquires
contact us at:-

**2 CHARLES MALL,
HAYMARKET CENTRE,
LEICESTER LE1 3YE.**



Hogg Robinson (UK) Ltd.

Phoenix House,
16, New Walk,
Leicester.

Specialists in all classes of
Commercial, Industrial & Personal
Insurance.

Telephone: Leicester 50131



Action from Leicester v Cardiff at Welford Road 1983/84 resulting in a 29-24 victory for Tigers.



Ian Smith going over for Tigers under a pile of bodies for the first try.



Rory Underwood finishing off a fine threequarter move for Tigers 2nd try.

UP AND OVER . . . Nick Youngs and Cardiff full-back Paul Rees (right) look as though they are in the middle of a gymnastics routine, but the Tigers' scrum-half has just notched their third try.



- Conveyancing – Residential and Commercial
- Litigation – Civil, Criminal and Divorce
- Probate, Wills and Trusts
- Company Matters
- Employment Law
- Tax advice
- Estimates as to costs given

Why not give us a try and let us represent you?

McKinnell, Ervin & Mitchell
Solicitors

1 & 3 New Street, Leicester LE1 5NL
Telephone (0533) 29871/2/3

...the proof
of quality
from
Cavalier Reproductions
LITHOGRAPHIC PLATEMAKERS

Iliffe House · Iliffe Avenue · Oadby · Leicester
Telephone Leicester 714966

ESTD 1758

JOHN SMITH'S

SUPPORT GOOD SPORTS

CONVERT TO

Impress

FOR YOUR PRINT

IMPRESS (Leicester) LTD.,
8 MORRIS ROAD,
LEICESTER LE2 6BR
TELEPHONE: (0533) 700999



The best in
its field.

Support your local milkmen. Kirby & West.