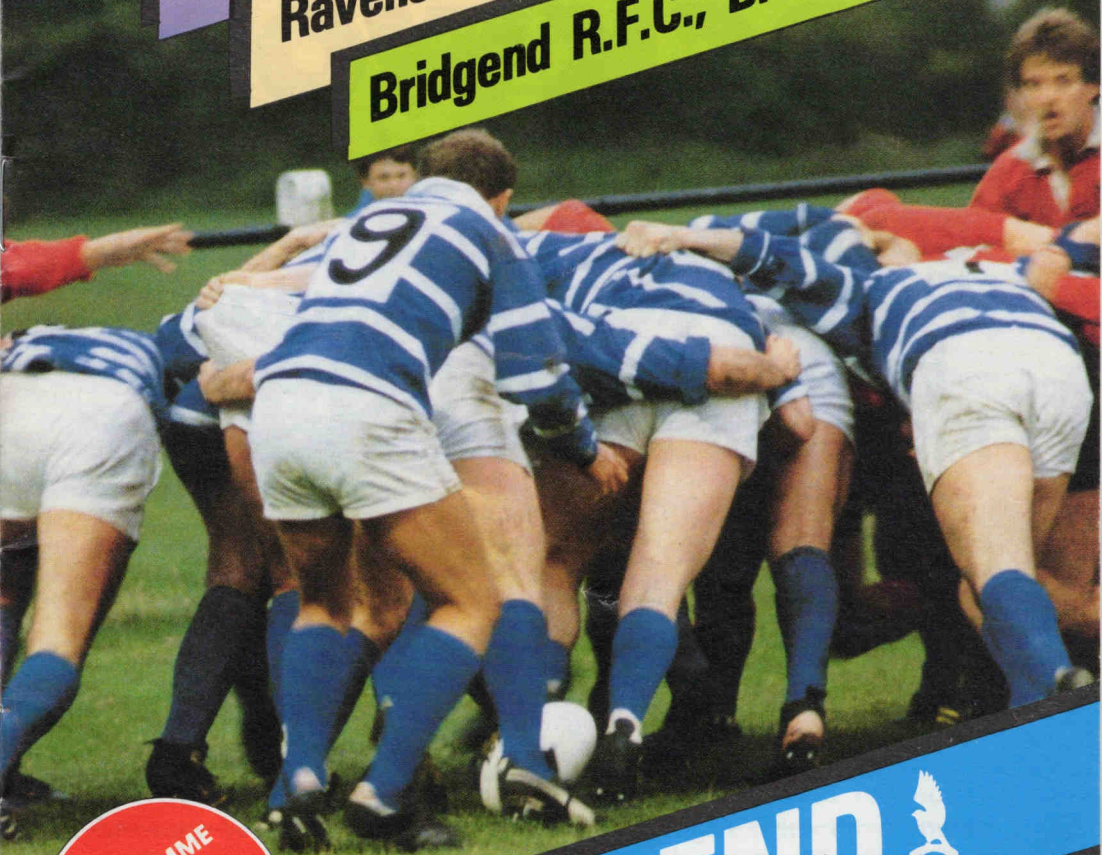


World Cup — Page 5

Ravens Fixtures — Page 4

Bridgend R.F.C., Brewery Field



PROGRAMME

25p

V

BRIDGEND



CARDIFF

Wed., 8th October, 1986 — Kick-off 7.15 p.m.



---

Insulation Products  
**Rockwool**

Rockwool manufacture a complete range of Thermal, Fire and Acoustic Insulation Products for Domestic and Industrial Buildings and Plant.

---

For further information please contact:

Insulation Products  
**Rockwool**

Pencoed · Bridgend  
Mid Glamorgan CF35 6NY  
Telephone: 0656 · 862621

**Our grateful thanks  
to match sponsors**



Crown Brewery Co. PLC,  
Pontyclun, Mid Glamorgan. CF7 9YG.  
Telephone: Llantrisant 0443 225453 (5 lines)  
Telegrams: Crown Brewery, Pontyclun.

Crown Brewery was already an old established and respected brewery when, in June 1919, it was bought from its owners, D. & T. Jenkins Ltd., by the member clubs of the South Wales branch of the Club and Institute Union and business was re-named South Wales & Monmouthshire United Clubs Brewery.

The only product, Clubs Pale Ale, was sold at the rate of about thirty barrels per day. Today, sixty five years on, the Company sells a full range of beers and the widest range of lagers and ciders available from any brewery in Wales.

In 1954, the present fine brewery was built. In 1977 it was decided to revert to the Crown Brewery title and the Company, together with its products, have since carried the original name.

We are still principally owned by our customers who enjoy not only our prizewinning beers, but also the re-distribution of the greater part of our profits in the form of generous bonuses which are related to the quantity of our beers they buy each year.



# GROUND MAINTENANCE, FENCING AND GARDENING CONTRACTOR

# W. R. DAVID & SONS

TORGELLY FARM  
LLANHARRY

Tel: 0443/223711

**Contractors to Bridgend R.F.C.**

## BRIDGEND RAVENS FIXTURE LIST — SEASON 1986/87

1986

Thur.	Sept. 4 — Cefn Cribbwr	A	21-13
Sat.	6 — Caerleon	H	32-7
Wed.	10 — Maesteg Celtic	H	47-3
Sat.	12 — Swansea Athletic	A	28-9
Wed.	17 — Gowerston	H	56-0
Sat.	20 — 22 Air Def. Regt.	H	94-0
Sat.	27 — Pill Harriers	A	32-11
Sat.	Oct. 4 — Aberavon Quins	H	32-3
Sat.	11 — Abercarn	H	-
Sat.	18 — Caerleon	A	-
Wed.	22 — Llanharan	H	-
Sat.	25 — Ebbw Vale	H	-
Wed.	29 — Llantwit Major	H	-
Sat.	Nov. 1 — Abercarn	A	-
Sat.	8 — Cardiff Ints.	A	-
Sat.	15 — Pill Harriers	H	-
Sat.	22 — Cardiff Athletic	H	-
Sat.	29 — Neath Athletic	H	-
Sat.	Dec. 6 — Ebbw Vale Ath.	A	-
Wed.	10 — Pyle	H	-
Sat.	13 — Glynneath	H	-
Sat.	20 — Cardiff Ints.	H	-
Sat.	27 — Swansea Athletic	H	-

1987

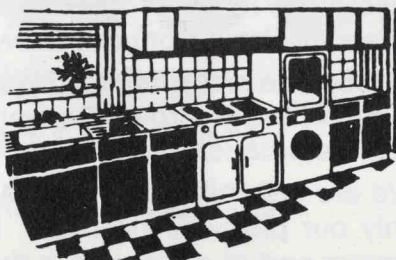
Sat.	Jan. 3 —		
Sat.	10 — Penarth Athletic	H	-
Sat.	17 — WALES -v- IRELAND		-
Sat.	24 — Rumney	H	-
Sat.	31 — Bedwas	H	-
Sat.	Feb. 7 — Cardiff Athletic	A	-
Sat.	7 — FRANCE -v- WALES		-
Sat.	14 — Rumney	A	-
Sat.	21 — Bristol Utd.	H	-
Sat.	28 — Porthcawl	H	-
Sat.	Mar. 7 — WALES -v- ENGLAND		-
Wed.	11 — Cefn Cribbwr	H	-
Sat.	14 — Pyle	A	-
Sat.	21 — Neath Athletic	A	-
Sat.	21 — SCOTLAND -v- WALES		-
Tues.	24 — Penarth Athletic	A	-
Sat.	28 — Glynneath	A	-
Wed.	Apr. 1 — Llantwit Major	A	-
Sat.	4 — Gowerston	A	-
Wed.	8 — Aberavon Quins	A	-
Sat.	11 — Maesteg Celtic	A	-
Mon.	20 — Porthcawl	A	-
Sat.	25 — Bedwas	A	-

# BD BERNARD DAVIES (BUILDERS' MERCHANTS) LTD.

Craiglands, Bryncethin, Nr. Bridgend, Mid Glamorgan  
Telephone: ABERKENFIG 720279, 720308 & 721333

**EXTENSIVE STOCKS OF ALL  
BUILDING MATERIALS AND  
TOOLS**

**Main Stockists of:**  
KITCHEN UNITS  
BATHROOM SUITES  
TILE SURROUNDS  
REFORMITE STONE AND  
FOREST OF DEAN NATURAL  
STONE



*Mid Glamorgan's Leading Builders' Merchant*

Saturday, 1st November, Halloween Fancy Dress Dance at Clubhouse. Tickets £3.00 including Buffet. Apply early to Brian Hill/Peter Wood.

For the game against London Welsh at Old Deer Park on Saturday, 11th October, the kick-off will be at 12.30 p.m. This is to avoid a clash with the England/Japan game at Twickenham that afternoon. See page 6.

Facilities are available at the Brewery Field Clubhouse for members wishing to organise parties or social functions, which may be of particular interest for Childrens and other parties during the month of December.

From 12 noon to 2.00 p.m. Monday to Friday, the Clubhouse provides lunches — all home cooking, and at the best prices in Town, for members and guests. With a car park on the doorstep, and the high standard of meals which are available, why not give it a try.

Full information about party etc., bookings from Mr. Brian Hill, 5 Heol Fach, Bryncethin, Nr. Bridgend. (Tel: 722663 Home) or Clubhouse Bridgend 2707.

## Half Yearly Draw

£400 G. Thomas (305), £200 B. Edwards (117), £100 R. Board (017), £50 S. Penry-Ellis (152).

## WORLD CUP 1987

### POOL 1

23rd May	England -v- Australia
24th May	Japan -v- U.S.A.
30th May	England -v- Japan
31st May	Australia -v- U.S.A.
3rd June	England -v- U.S.A.
3rd June	Australia -v- Japan

Sydney  
Brisbane  
Sydney  
Brisbane  
Sydney  
Sydney

### POOL 2

24th May	Canada -v- Tonga
25th May	Ireland -v- Wales
29th May	Tonga -v- Wales
30th May	Canada -v- Ireland
3rd June	Tonga -v- Ireland
3rd June	Wales -v- Canada

Napier  
Wellington  
Palmerston North  
Dunedin  
Brisbane  
Invercargill

### POOL 3

22nd May	New Zealand -v- Italy
24th May	Argentina -v- Fiji
27th May	New Zealand -v- Fiji
28th May	Argentina -v- Italy
31st May	Italy -v- Fiji
1st June	New Zealand -v- Argentina

Auckland  
Hamilton  
Christchurch  
Christchurch  
Dunedin  
Wellington

### POOL 4

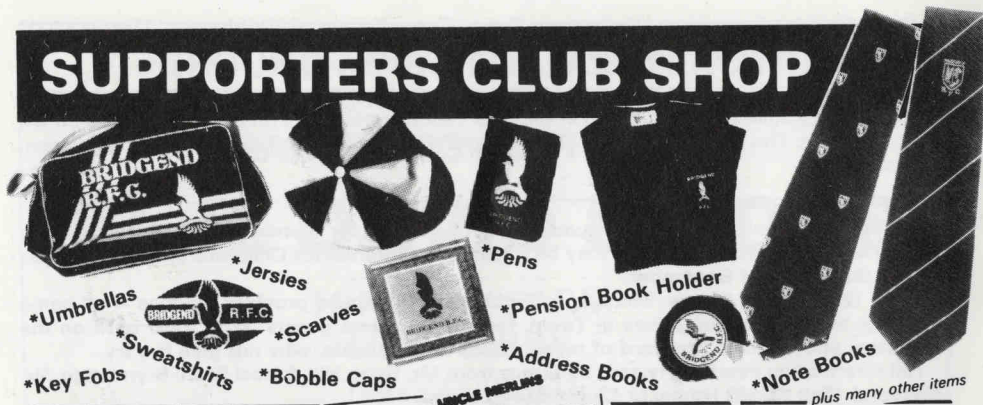
23rd May	France -v- Scotland
23rd May	Romania -v- Zimbabwe
28th May	Romania -v- France
30th May	Scotland -v- Zimbabwe
2nd June	Scotland -v- Romania
2nd June	France -v- Zimbabwe

Christchurch  
Auckland  
Wellington  
Dunedin  
Dunedin  
Auckland

- A. 6th June. Winner of Pool 3 -v- Runner-up of Pool 4 — Christchurch
- B. 7th June. Winner of Pool 1 -v- Runner-up of Pool 2 — Sydney
- C. 7th June. Winner of Pool 4 -v- Runner-up of Pool 3 — Auckland
- D. 8th June. Winner of Pool 2 -v- Runner-up of Pool 1 — Brisbane
- E. 13th June. Semi-Final A -v- D — Sydney
- F. 14th June. Semi-Final B -v- C — Brisbane
- 18th June. Third Place Play-off E -v- F — Rotarura
- 20th June. FINAL — Auckland



# SUPPORTERS CLUB SHOP



## CAFETERIA (TAKE AWAY)

\*Toasties \*Tea  
\*Soup \*Meat Pies



## Kiddies Tuck Shop

\*Mars \*Kit Kat  
\*Curly Wurly \*Chocolates  
\*Sweets \*Drinks

Supporters Club Membership now being taken at the Shop. — 60p and 30p O.A.P.'s and Juniors.

Your Membership and continuing support at 'The Shop' is very much appreciated because it enables us to finance presentations to players, helps us to donate towards 'playing tours', and provide an annual financial contribution to the main Club. — Many Thanks.

For 400 Club information and Membership, apply at the Shop.

Supporters are reminded that the advance booking of Transport is essential to ensure a smooth running of the system — and to avoid disappointment.

**TRANSPORT** — Last chance to book for:—

**LONDON WELSH**— Saturday, 11th October. Coach leaves 8.00 a.m. Kick-off time 12.30 p.m. Coach leaves Old Deer Park at 7.00 p.m. This will give those people who want to see the England/Japan International just up the road at Twickenham, plenty of time.

BRIDGEND R.F.C. SUPPORTERS CLUB Member of the Association of Welsh Rugby Supporters Clubs.



# GWYN JONES & SON

Whitecroft Garage,  
Bryncethin,  
Nr. Bridgend.  
Telephone: 720300/720182.

*Consult us for all types of Coach Hire.*

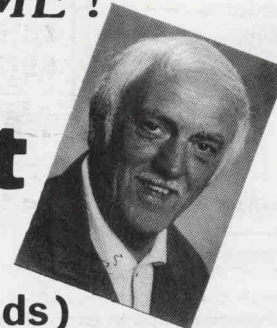
The 1986-7 Panto Sensation!

THE GRAND PAVILION  
PORTHCAWL

WALES' KING OF  
PANTOMIME!

**Stan  
Stennett**

(Sid Hooper  
— Crossroads)



in Billy and Bonzo meet

**ALADDIN**



THIS GREAT FAMILY  
PANTOMIME STARTS ON  
WEDNESDAY 24th DEC.  
FOR A LIMITED SEASON.

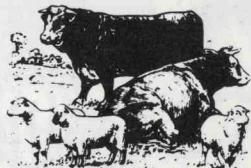
SEAT PRICES FROM £2.00.  
10% DISCOUNT FOR PARTIES  
OF 10 OR MORE.

FOR FURTHER DETAILS-  
RING CARDIFF 625276.

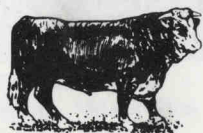


## PETER WOOD

HIGH CLASS FAMILY BUTCHER  
**STALL 2 THE NEW MARKET**  
**Tel: 56985 BRIDGEND**



DEEP FREEZE ORDERS SUPPLIED  
and promptly attended to



Deliveries Daily of  
Local BEEF, LAMB  
AND PORK  
From Farms in  
THE VALE OF  
GLAMORGAN

Official Suppliers to BRIDGEND RFC

### Tonight's Teams and Programme Notes by W. A. D. Lawrie

This evening we extend a special welcome to friends of very long standing — CARDIFF, fresh from their 28-19 defeat of old rivals Newport at the Arms Park on Saturday.

But their win brought further injury problems for the Club. Welsh International second row ROBERT NORSTER wrenched his left shoulder and pulled a muscle early in Saturday's game and although he finished the match he was virtually a passenger. Intense early week physiotherapy will decide whether he will be fit enough to play tonight. The trouble started in the recent game at Aberavon, and it is difficult to estimate the time required for a cure.

There was a further problem when Norster's stand-in Welsh Youth cap Michael Parry went off with a shoulder injury in the 'Rags' win over Newport United at Rodney Parade. It could be that TONY MOGRIDGE will once again be called upon to fill the gap.

## BRIDGEND

Colours: Blue and White

PENNY  
TRY

15 Peter GOODFELLOW	Full Back
14 Glen WEBBE*	Right Wing
13 John APSEE	Right Centre
12 Andrew JONES T	Left Centre
11 Chris BRADSHAW	Left Wing
10 Aled WILLIAMS P	Stand-off
9 Michael L. GRIFFITHS T	Scrum-half
1 Mike GRIFFITHS	Loose-head
2 Wayne HALL O'CALLAGHAN	Hooker
3 Paul EDWARDS	Tight-head
4 Adrian OWEN (Capt.)	Lock
5 Jeff JENKINS	Lock
6 John MORGAN T	Left Flanker
8 Steve PENRY-ELLIS	No. 8
7 Michael BUDD	Right Flanker

\*International

#### Replacements:

Huw Lewis, Richard Evans.

Reserves: Chris O'CALLAGHAN, Martin MORRIS, Ian STEPHENS, Paul DARKE.

Referee— Mr. D. O. HUGHES (Newbridge) W.R.U.

## CARDIFF

Colours: Cambridge Blue & Black

15 Mike BAYER A. DONOVAN
14 Graham DAVIES
13 Mark RING* CC
12 Alan DONOVAN* G JONES
11 Adrian HADLEY* T
10 Geraint JOHN C
9 Neil O'BRIEN T PRITCHARD
1 Jeff WHITEFOOT*
2 Ian GREENSLADE
3 Ian EIDMAN*
4 Kevin EDWARDS
5 Michael PARRY T
6 Gareth ROBERTS*
8 John SCOTT* P RING
7 Robert LAKIN

\*International

#### Replacements:

Jose Souto, Graham Pritchard.

Reserves: Chris O'CALLAGHAN, Martin MORRIS, Ian STEPHENS, Paul DARKE.

Referee— Mr. D. O. HUGHES (Newbridge) W.R.U.

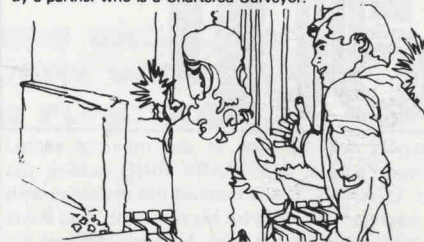
**A complete Property  
'Service caring for people  
and property —** you will find our  
handling is impeccable, our service  
unbeatable and our pace, very quick indeed.

## Payton Jewell & Caines

Chartered Surveyors, Valuers and Estate Agents.

8 Dunraven Place, Bridgend. Tel: 4328.

Every Sale, Valuation, Report, Survey is handled personally  
by a partner who is a Chartered Surveyor.



But there is better news of skipper ALAN PHILLIPS. A Monday night training session could prove that the achilles' heel injury that has plagued him since the first week of the season has improved sufficiently for him to resume playing, but this is not likely to be before Saturday when the First XV visit Northampton and the Athletic XV play at Neath Athletic.

Cardiff's latest recruit, English International centre RICHARD CARDUS marked his first game for the Club with a hat-trick of tries in the Athletic's 43-30 win at Rodney Parade. Cardus who has played for the Wasps since 1981 has taken up a marketing appointment in Wales. He won his two International caps against France and Wales in 1979 while with the Roundhay club, and he has always impressed Welsh crowds when formerly playing for the Barbarians on their Easter tours. He led Wasps in their first John Player cup final last season.

On Saturday last No. 8 PAUL RING (who had one game with our Ravens last season), celebrated his debut with two tries from scrums on the

## GARETH L. EDWARDS

Estate Agent & Valuer

- For Personal Service
- Treble Fronted Display Showroom
- Open 7 Days Per Week
- Unrivalled Mortgage Facilities
- Local Agent for Abbey National Building Society (at both offices)
- Fellow National Association of Estate Agents

Contact: G. L. Edwards, F.N.A.E.A., Estate Agent & Valuer,  
4-6 Dunraven Place, Bridgend. Tel: 3274/2710/4253.  
The Triangle, Brackla, Bridgend. Tel: 64116/64117.  
3-5 Hendre Road, Pencoed. Tel: 864033.

## INTERNATIONAL RUGBY

TOURS FOR WELSH RUGBY SUPPORTERS

FRANCE

PARC DES PRINCES, PARIS

IRELAND

LANDSOWNE ROAD, DUBLIN

WALES

..... VERSUS .....

SCOTLAND

MURRAYFIELD, EDINBURGH

Brochure From

COUSINS TRAVEL



26 ALBANY ROAD, CARDIFF  
TEL (0222) 492418







For the best in Fitted  
Carpets and Furniture  
you can't beat

**don lewis**

(Carpets and Furniture) Ltd.

74-76 Nolton Street, Bridgend  
Telephone 57682

Newport line. 3 tries in six minutes sealed Newport's fate, with MARK RING getting the first. GERAINT JOHN marked the occasion with his best game to date for his new club, and it will be interesting to see how he fares against his former colleagues. He improved as the game progressed, kicking well and setting his back division in motion whenever possible. He should have an entertaining duel with ALED WILLIAMS.

For BRIDGEND, there are likely to be seven changes (one positional) from the side narrowly defeated at Ebbw Vale on Saturday last. PETER GOODFELLOW returns at full back for CHRIS BRADSHAW who now comes in at left wing. The only other change behind the scrum sees the return of GLEN WEBBE for Gareth John, a Porthcawl player who made his debut at Ebbw Vale. Up front MIKE GRIFFITHS and PAUL EDWARDS take over from Ian Stephens and Richard Evans; the powerhouse remains the same with skipper ADRIAN OWEN and JEFF

JENKINS and the back row positions will be contested by MICHAEL BUDD, STEVE PENRY-ELLIS, JOHN MORGAN and SIMON APSEE, only Budd having played at Ebbw Vale.

Please note that the kick-off for next Saturday's game against London Welsh at Old Deer Park will be at 12.30 p.m., to avoid a clash with England/Japan at Twickenham the same afternoon.

ADRIAN OWEN stands on the verge of winning a first Wales 'B' cap after knocking on the door for several years. Phil May of Llanelli is the only other specialist front of the line jumper in the 'B' squad, but Owen could still be favourite to captain the 'B' side against their French counterparts at Pontypridd on the 25th October. Llanelli supply 10 players to the 29-man squad, including their entire front row, which will not please a number of other clubs.

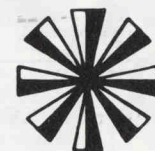


**UMBRO MAKES ALL  
THE DIFFERENCE—  
ON AND OFF THE FIELD.**

UMBRO. OFFICIAL  
SPORTSWEAR SUPPLIERS  
TO BRIDGEND R.F.C.  
AND A HOST OF OTHER  
TOP CLUBS AND TEAMS.



*Makes all the difference!*



**BRIDGEND  
RECREATION  
CENTRE**

**THE CENTRE OFFERS EXCELLENT  
FACILITIES FOR A VERY WIDE RANGE  
OF ACTIVITIES AND FUNCTIONS.**

lectures  
**drama**  
film shows  
**exhibitions**  
Receptions  
dinner-dances  
meetings  
concerts  
tournaments  
fashion shows  
displays

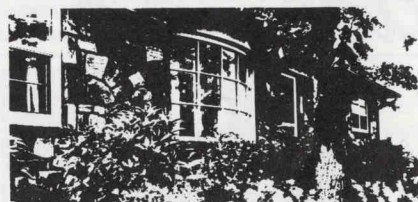
**For further information 2 Bridgend 57481**



# Match Ball Sponsors 1986/7

13th Sept. NEWBRIDGE Mr. David Carrington Novolor	24th Sept. LLANELLI John Raymond	27th Sept. PONTYPOOL J. H. Apsee & Sons	8th Oct. CARDIFF Huw Ceredig
15th Oct. SWANSEA Gwyn Jones	18th Oct. COVENTRY British Gas	1st Nov. BRISTOL	8th Nov. NEATH Robert Williams
3rd Dec. SOUTH GLAM. INST.	6th Dec. ABERTILLERY White Horse, Coychurch	26th Dec. MAESTEG Trevor Watkins	3rd Jan. NEWPORT Lyndon Thomas
7th Jan. GLAM. WANDERERS Dr. B. W. Lawrie	16th Jan. PALMERSTON Int. Comps. Ltd.	28th Jan. PENARTH	14th Feb. LONDON WELSH Peter Bunston
18th Feb. BATH British Gas	14th March ABERAVON	17th March CROSS KEYS	28th March CUP/EBBW VALE
8th April S. WALES POLICE Bercon Crest	11th April MOSELEY	20th April PONTYPRIDD	

Tonight's match ball has been donated by HUW CEREDIG, Thespian of this parish, and a household name for his portrayal of Reg Harris in the long-running saga Pobwl y Cwm, and his appearances in many other dramatic and light Welsh feature programmes. Yet still finding time to sit, as an active backbencher on the Club's General Committee. Diolch yn fawr - HUW.



## BRIDGEND GLAZING AND SILVERING Co. Ltd.

BRACKLA INDUSTRIAL ESTATE. Tel: 3003

For New Glazing and Window Repairs  
Pictures and Mirrors Framed, Glass cut  
to Size and delivered

## ROBERT WILLIAMS

### Ogmore Farm Dairy

For all your High Quality Dairy produce.

Tel: BRIDGEND 880856



# A NEW NAME TO CREDIT

FROM today companies, partnerships and private individuals have a new source for financial services - the UCB Group.

As Commercial Credit, the Group has been active in Great Britain since 1971, offering invoice discounting, commercial mortgages and equipment finance to businesses, as well as homeowner loans and mortgages to individuals. The acquisition earlier this year by Compagnie Bancaire and its associate Union de Credit pour le Bâtiment gives new strength and a powerful base from which to extend and improve the range of financial services.

### STRENGTH IN DEPTH

#### UCB GROUP - UK

200 employees

Nationwide network of offices

Outstanding loans £250 million

Licensed Deposit Taker\*

#### COMPAGNIE BANCAIRE - FRANCE

7000 employees

Europe's largest specialist  
finance house

Outstanding loans £10 billion

Public Company listed on London  
and Paris Stock Exchanges

The UCB Group wishes all its staff, clients and professional intermediaries a successful and prosperous future.

### UCB FINANCIAL SERVICES LIMITED (Holding Company)

COMMERCIAL FINANCIAL SERVICES LIMITED\*

UCB INVOICE DISCOUNTING LIMITED

UCB EQUIPMENT FINANCE LIMITED

UCB LEASING LIMITED

UCB HOME LOANS CORPORATION LIMITED

**UCB  
GROUP**

Portland House · 1a Fitzalan Place · Newport Road · Cardiff CF2 1ED  
Telephone (0222) 482508 · Telex 497757 UNKCAR G



## FIXTURE LIST & RESULTS 1986/87

### 1986

Tues. Sept. 2—	Abercynon	A	58-7
Sat. 6—	Balinrobe (W. Ireland)	A	10-18
Tues. 9—	Tredegar	A	15-13
Sat. 13—	Newbridge	H	14-6
Sat. 20—	Saracens	A	4-13
Wed. 24—	Llanelli	H	21-3
Sat. 27—	Pontypool	H	22-6
Mon. 29—	Treorchy	A	20-10
Sat. Oct. 4—	Ebbw Vale	A	12-16
Wed. 8—	Cardiff	H	-
Sat. 11—	London Welsh	A	-
Wed. 15—	Swansea	H	-
Sat. 18—	Coventry	H	-
Wed. 22—	Cross Keys	A	-
Sat. 25—	Aberavon	A	-
Wed. 29—	Pontypridd	A	-
Sat. Nov. 1—	Bristol	H	-
Mon. 3—	South Wales Police	A	-
Sat. 8—	Neath	H	-
Sat. 15—	CUP ROUND	-	-
Sat. 22—	Newbridge	A	-
Sat. 29—	Pontypool	A	-
Wed. Dec. 3—	South Glam. Inst.	H	-
Sat. 6—	Abertillery	H	-
Sat. 13—	Neath	A	-
Sat. 20—	CUP ROUND	-	-
B.D. Fri. 26—	Maesteg	H	-
Sat. 27—	Cardiff	A	-

### 1987

Sat. Jan. 3—	Newport	H	-
Wed. 7—	Glam. Wanderers	H	-
Sat. 10—	Abertillery	A	-
Fri. 16—	Palmerston	H	-
Sat. 24—	CUP ROUND	-	-
Wed. 28—	Penarth	H	-
Sat. 31—	Gloucester	A	-
Tues. Feb. 10—	Newport	A	-
Sat. 14—	London Welsh	H	-
Wed. 18—	Bath	H	-
Sat. 21—	Llanelli	A	-
Sat. 28—	CUP—Bedford	A	-
Wed. Mar. 4—	Glam. Wanderers	A	-
Wed. 11—	Swansea	A	-
Sat. 14—	Aberavon	H	-
Tues. 17—	Cross Keys	H	-
Sat. 28—	CUP—Ebbw Vale	H	-
Wed. Apr. 1—	Penarth	A	-
Sat. 4—	Rosslyn Park	A	-
Wed. 8—	S. Wales Police	H	-
Sat. 11—	Moseley	H	-
Sat. 18—	Maesteg	A	-
E. Mon. 20—	Pontypridd	H	-
2nd May.	SCHWEPES CUP FINAL	-	-

## Results against Cardiff since 1966/67

(Bridgend scores first)

### HOME:

1966-67—	3-14	1976-77—	7-21
1967-68—	3-6, 3-6	1977-78—	6-18
1968-69—	6-10	1978-79—	12-10
1969-70—	14-3	1979-80—	4-3
1970-71—	3-11	1980-81—	16-12
1971-72—	19-6	1981-82—	18-16
1972-73—	6-6	1982-83—	21-16
1973-74—	18-21 (CUP), 13-7	1983-84—	34-10
1974-75—	24-10	1984-85—	9-12
1975-76—	3-12	1985-86—	30-3

### HOME SUMMARY:

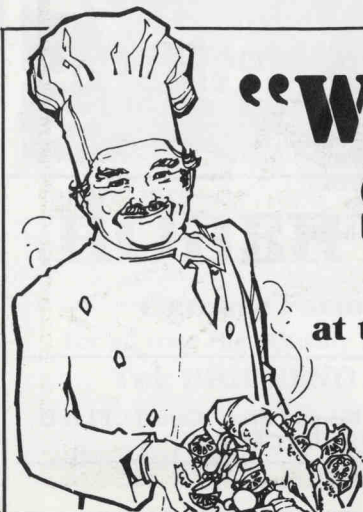
Played 22 Won 11 Lost 10 Drawn 1.

### AWAY:

1966-67—	16-14, 21-8	1977-78—	7-6
1967-68—	0-14	1978-79—	12-10
1968-69—	11-6	1979-80—	17-9
1969-70—	6-0	1980-81—	22-6, 6-14 (CUP)
1970-71—	3-3	1981-82—	14-18
1971-72—	6-0	1982-83—	12-12 (CUP)
1972-73—	9-7	1983-84—	7-9
1973-74—	13-11	1984-85—	13-34
1974-75—	13-12, 6-4 (CUP)	1985-86—	16-7, 9-17 (CUP)
1975-76—	12-12		

### AWAY SUMMARY:

Played 24 Won 14 Lost 8 Drawn 2.



# "WELCOME TO STEAKS"

## RESTAURANT

at the Railway Inn, Bridgend  
Tel. 2266

10% DISCOUNT OFFERED TO BRIDGEND  
R.F.C. SUPPORTERS ON PRESENTATION  
OF THEIR MEMBERSHIP CARDS

## Ready Mixed Concrete (Wales) Limited

RMC House, Trews Field,  
Tondy Road, Bridgend,  
Glamorgan.

Tel: Bridgend (0656) 56661

# Give us a Try!





# **British Tissues** ***Dixcel Tissues — The Best of British Tissues***



***Good Luck to  
Bridgend Rugby Football Club.***

**Bridgend  
Paper Mills**

**Tel: Maesteg (0656) 733733**

