



# Leicester

**FOOTBALL CLUB 1987-8**



WORLD TOUR ACTION FROM DOWN UNDER — WESTERN AUSTRALIA v LEICESTER

PERTH, AUGUST 1987

## **TIGERS v CARDIFF**

**SATURDAY NOVEMBER 7th 1987 — K.O. 3.00 P.M.**

**OFFICIAL PROGRAMME 30p**

**PATRONS**

**IND COOPE**





ONE TRY  
AND  
YOU'LL BE  
CONVERTED.

JND COOPERS

GOOD TIMES ARE ALWAYS ON HAND

PUBS



A Great British Company

READ ALL ABOUT  
YOU IN YOUR  
LEICESTER  
MERCURY

Leicester Mercury

ORDER IT NOW FROM YOUR LOCAL NEWSAGENT.

EARL SHILTON  
BUILDING SOCIETY

PUTTING  
LOCAL  
INTEREST  
FIRST

OFFICES OR BRANCH AGENCIES  
IN EARL SHILTON, BARWELL  
HINCKLEY, LEICESTER  
LUTTERWORTH  
AND WIGSTON.

Head Office: 22 The Hollow, Earl Shilton  
Telephone: Earl Shilton 44422  
General Manager: John W. Gilbert B.Sc(Eng)

INVESTMENTS · MORTGAGES · INSURANCE

DOWNES  
DYES

Suppliers of preparation products, dyes, auxiliary and  
finishing materials for textile and leather processing.

Extensive technical service available.

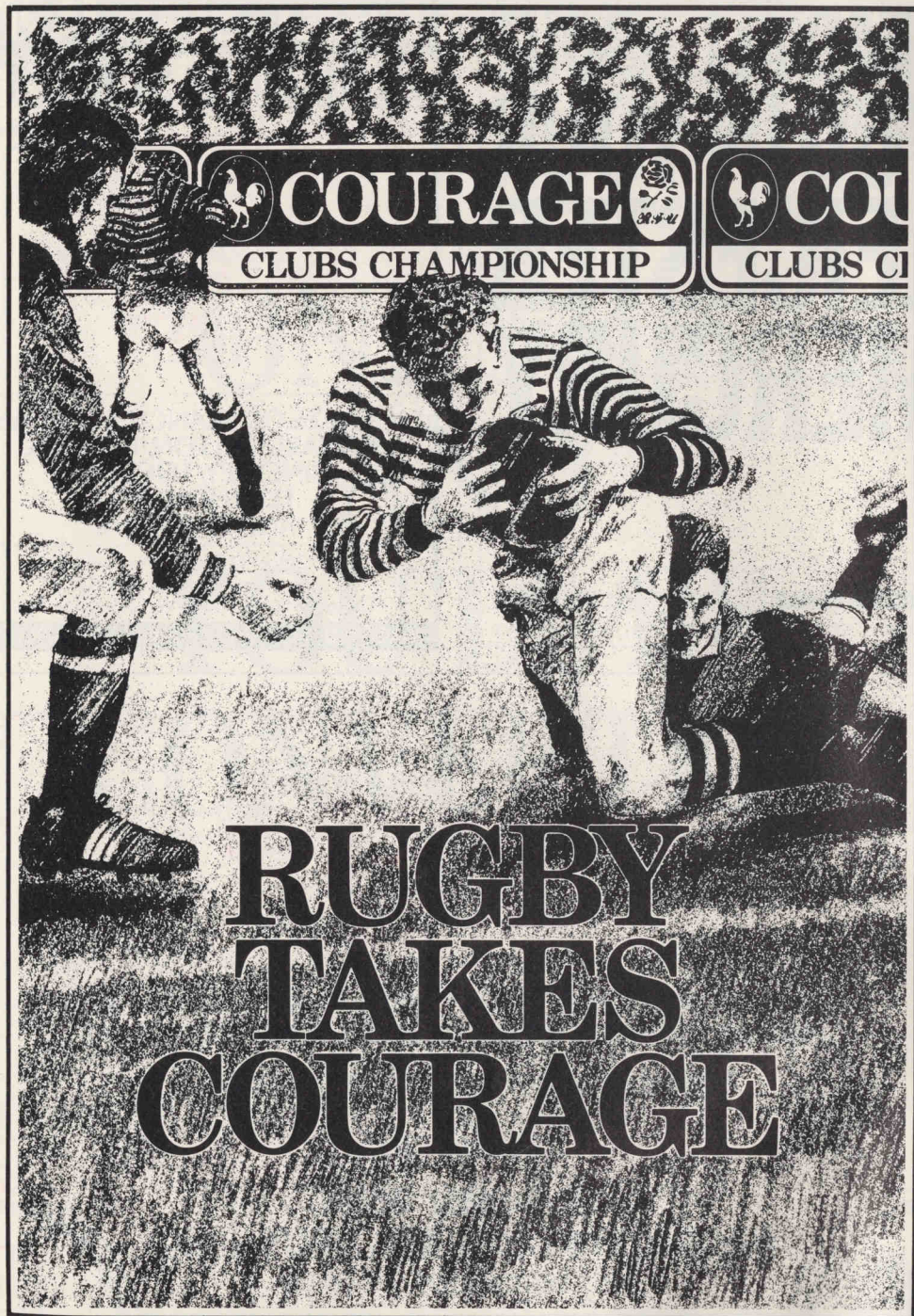
DOWNES DYES & AUXILIARIES

84, Barkby Road,  
Leicester LE4 7LF

Tel: Leicester 741616

Sole agents for Hispano Quimica S.A., Barcelona, Spain.





## Post House Hotel

Braunstone Lane, Leicester LE3 2FW  
Tel: Leicester (0533) 630500 Telex: 341009



TRY THE POST HOUSE HOTEL AND YOU'LL BE CONVERTED. FRIENDLY BARS – THE PLACE TO MEET BEFORE AND AFTER THE MATCH

### BARGE COFFEE SHOP

Open all day from 10.00 am until 10.30 pm for grills, snacks and light meals, plus superb Childrens' Menu.

### THE WYVERN RESTAURANT

For that special occasion dine in the comfortable surroundings of our Wyvern Restaurant or why not join in one of our speciality nights. Ask for our Diary Of Events for details.

Enjoy the best value Sunday Lunch in Leicester  
Children under 14 years half price.



Trusthouse Forte Hotels

**first on the air...still No1**

**RADIO  
LEICESTER**

**follow the tigers at home & away**

**358<sub>m</sub> 837<sub>KHZ</sub> 95.1<sub>VHF</sub>**



# TheBRADGATE ARMS·Cropston.



**FreeHouse**

RUDDLES · SAMUEL SMITHS · M&B ·  
BURTON ALE (IND COOPE) ·  
BASS

WARM SKITTLE ALLEY FOR PARTIES

EARLY EVENING OPENING 5.30pm

HOT LUNCHES MON – SAT.

LARGE GARDEN

CHILDREN'S ROOM

'PHONE LEICESTER 362120



## NICHOLAS DUCKER & CO

### SPECIALIST RETAIL PROPERTY CONSULTANT

ACQUISITIONS • RENT REVIEWS  
DISPOSALS • VALUATIONS  
DEVELOPMENTS • INVESTMENTS

IN THE EAST, WEST &  
NORTH MIDLANDS

97 LONDON ROAD  
LEICESTER · LE2 0PF  
TELEPHONE: (0533) 558356



## Remington Collins Ltd.

INSURANCE BROKERS



Members of  
The Financial Intermediaries  
Managers and Brokers  
Regulatory Association

*Professional independent advice on  
all Commercial and Personal  
Insurance matters together with a  
comprehensive Investment &  
Mortgage service.*

9 Upper King Street,  
Leicester LE1 6XF.  
Telephone: 552929

1a Lutterworth Road,  
Blaby LE8 3DW.  
Telephone: 779595



MARKFIELD WOODWORKING MACHINERY LTD

**WOODWORKING MACHINERY  
NEW AND RECONDITIONED**

**FINDER SERVICE AVAILABLE  
SINGLE OR WHOLE PLANT BOUGHT**

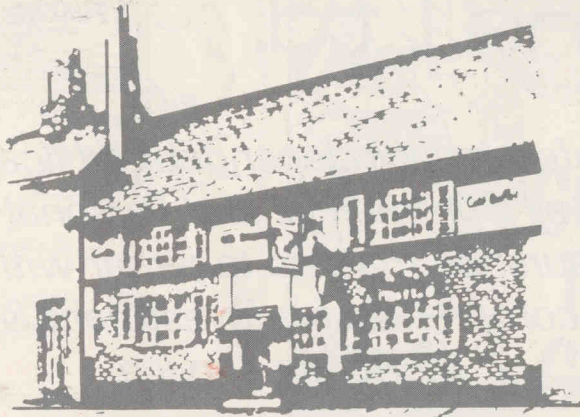
UNIT 1 & 2, MARLOW ROAD INDUSTRIAL PARK,  
OFF NARBOROUGH ROAD, LEICESTER

**LEICESTER  
(0533) 893469**



# THE OLD BOWLING GREEN INN

OXFORD STREET · LEICESTER



TELEPHONE (0533) 541164

TRADITIONAL BEERS · BAR FOOD AVAILABLE  
YOUR HOSTS – DEXTER AND JOANNE DIMBLEBEE

**MODO**

**MEANS**

**PAPER**

**MODO IS ONE OF THE LARGEST AND  
FASTEST GROWING PAPER COMPANIES  
IN EUROPE.**

**FOR DETAILS OF HOW WE CAN HELP  
YOU PLEASE TELEPHONE THE  
FOLLOWING NUMBERS:**

**HINCKLEY (0455) 614553  
NOTTINGHAM (0602) 411872**

**REING LD**  
(FORWARDING) LTD.

**INTERNATIONAL FREIGHT  
FORWARDERS**

**FULL LOAD SERVICES TO AND  
FROM FRANCE, SPAIN AND  
PORTUGAL.**

**SPECIALISTS IN  
TEMPERATURE-CONTROLLED  
TRANSPORT**

<b>LEICESTER</b>	<b>0455-24-281</b>
<b>MANCHESTER</b>	<b>061-872-1782/3</b>
<b>POOLE</b>	<b>0202-681655/7</b>
<b>LONDON</b>	<b>01-720-5864</b>

**FOR LIGHT HAULAGE AND  
REMOVALS, ANYTIME,  
ANYWHERE,  
TIGER TRANSPORT  
IS AT YOUR SERVICE.**

PLEASE CONTACT NEV OR PHIL STEVENS

# TIGER TRANSPORT

10 WESTLEIGH ROAD, LEICESTER LE3 0HH  
TELEPHONE (0533) 553041 OR 891765

**NEW  
FORDS  
FROM**

**Ford**

# MARTINS

**\* SALES, SERVICE  
\* BODY REPAIRS  
\* CONTRACT HIRE  
\* LEASING**

**CONVERT TO A FORD**

YOU GET MILES MORE AT

**MARTINS**  
LEICESTER ROAD MARKET HARBOROUGH  
**MKT. HARBOROUGH**  
Tel. 66688

# THE RESERVOIR INN

CROPSTON

Peter Warner and Family invite you to share the wonderful facilities on offer at the Reservoir Inn.

- \* Open 11.00am to 11.00pm.
- \* Lunchtime bar snacks.
- \* Afternoon teas.
- \* Restaurant Grillroom with full a la carte menu.
- \* Evening bar snacks.
- \* Barbecue facilities.
- \* Attractive large gardens both front and rear.
- \* Play area under construction.
- \* Childrens tuck shop.
- \* Restaurant available for private functions and wedding receptions.
- \* Sunday lunches (menus changed weekly).
- \* Traditional draught beers.

Telephone: Leicester (0533) 362165

**'Charnwood's Premier Inn'**







Rory Underwood tackles Mark Tittley with Ian Bates and Rob Tebbutt closing in.

Roles reversed with Mark Tittley attempting to tackle Ian Bates.



A Little Gold Makes John Player Special.



JPS5FLRP

MIDDLE TAR As defined by H.M. Government  
STOPPING SMOKING REDUCES THE RISK  
OF SERIOUS DISEASES  
Health Departments' Chief Medical Officers



## LEICESTER

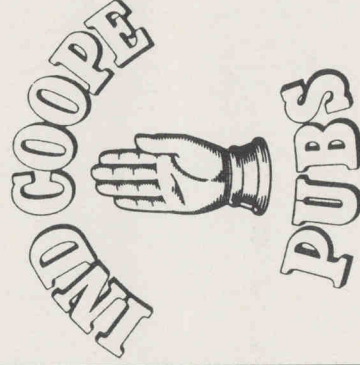
Colours: Red/Green/White hoops

O	W. H. Hare*	Full Back
N	B. Evans	Right Wing
M	I. Bates	Centre
L	T. Buttmore	Centre
K	R. Underwood*	Left Wing
J	L. Cusworth* (Capt.)	Fly Half
I	S. Kenney	Scrum Half
A	S. Redfern	Prop
B	H. Roberts	Hooker
C	S. Burnell	Prop
D	M. Foulkes-Arnold	Lock
E	T. Smith	Lock
F	J. Wells	Flanker
G	D. Richards*	No. 8
H	P. Thornley	Flanker

Repl: P — C. Dexter  
Q — S. Povoas/R. Tebbutt

As part of the British Gas Challenge the East Midlands Branch of British Gas are presenting a glass decanter to the winning team.

Today's Match and Ball  
Sponsors



GOOD TIMES  
ARE  
ALWAYS  
ON HAND

## CARDIFF

Colours: Cambridge Blue/Black

15	M. Rayer	Full Back
14	G. Cordle	Right Wing
13	D. Evans	Centre
12	C. Webber (Capt.)	Centre
11	A. Glasson	Left Wing
10	G. John	Fly Half
9	N. O'Brien	Scrum Half
1	J. Whitefoot*	Prop
2	I. Greenslade	Hooker
3	S. Blackmore*	Prop
4	M. Rowley	Lock
5	H. Stone	Lock
6	T. Crothers	Wing Forward
7	M. Edwards	Wing Forward
8	M. Knowles	No. 8

Repl: C. Hutchings  
O. Golding

Referee: J. A. F. Trigg — Middx/London

\* denotes Internationals



# The P & G Bland Group

SPECIALIST INSURANCE BROKERS TO INDUSTRY

PENSION CONSULTANTS

UNIT TRUST & INVESTMENT ADVISERS

Insurance Brokers to the Tigers

26 De Montfort Street  
Leicester LE1 7GQ  
Telephone 0533 546221





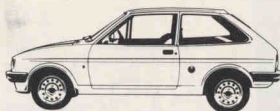
# CENTRAL MOTORS

OUR BEST  
WISHES TO  
LEICESTER  
FOOTBALL CLUB  
FOR THE  
1987/88 SEASON

LEICESTER'S 1st  MAIN DEALER  
OVER **75** YEARS SERVING THE  
PEOPLE OF LEICESTER WITH  
NEW AND USED CAR SALES  
ACCIDENT REPAIRS  
SERVICING AND PARTS



CENTRAL MOTOR COMPANY (LEICESTER) LTD  
BELGRAVE GATE, LEICESTER LE1 3XE  
TELEPHONE: (0533) 510111



Keeping you 'in touch'

**Leicester  
SOUND**

1260 KHz, 238 Metres Medium Wave,  
103.2 MHz. v.h.f. Stereo

Leicester's last home game v Cardiff ending in a 15-20pts defeat



Paul Dodge breaking through the full backs tackle with F.A. in support.

Maybe we should start a spot the ball competition?



Photographs by courtesy of Brian Smith



# Stoneygate Word Processing Bureau

79A London Road Leicester  
Telephone 0533 544694

- ★ Mailshots
- ★ Letters
- ★ Labels
- ★ Reports
- ★ Addresses
- ★ Manuscripts
- ★ Price Lists
- ★ Minutes
- ★ Legal Documentation
- ★ Theses
- ★ Fax

Specialising in the production of Documents and special forms appertaining to the Building Construction Industry, i.e. Bills of Quantities, Specifications, Tenders and Final Accounts.

## CLAYTON BROS (COACHES) LTD

EXCURSIONS  
PRIVATE  
HIRE  
CONTRACTS

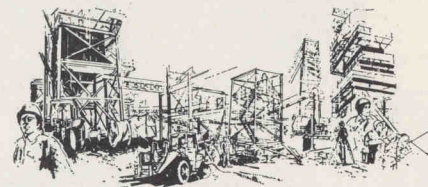


BRITISH & CONTINENTAL  
TOURS ORGANISED.

For Personal Service  
**TEL 739818 & 736651**

104 Gwendolen Road.

*Executive Coach available.*



EXTENSIVE CONTRACTS  
IN RECENT YEARS HAVE  
BEEN WORLDWIDE AS  
WELL AS THROUGHOUT  
THE U K

SPECIALISTS IN THE DESIGN & DETAILING  
OF STRUCTURAL STEELWORK, QUARRY  
PLANT, MATERIALS HANDLING &  
INDUSTRIAL STEEL STRUCTURES

**PACE CONSULTANTS LTD.**



91 LONDON ROAD LEICESTER LE2 0PT TEL. 0533 555756

**WISH LEICESTER TIGERS CONTINUED SUCCESS**



Leicester  
Print  
Finishing

The leading name for  
all print finishing

**Tel: 0533 24025**

Leicester Print Finishing Ltd.  
Slater Street, Leicester.



# The Navigation Inn

Kilby Bridge Leicester Telephone 811932

**SUPERB LUNCHTIME AND EVENING  
MENU AVAILABLE SEVEN DAYS A WEEK**

**SKITTLE ROOM AVAILABLE FOR  
PRIVATE PARTIES**

**ATTRACTIVE WATERSIDE BEER GARDEN**

**KNOW THE SCORE WITH  
FURNESS BOYER**

ESTATE AGENTS  
AUCTIONEERS AND

**OPEN  
7 DAYS  
A WEEK**

25 Rutland Street Leicester 556622

**WIGSTON**  
35 Leicester Road  
881237

**SYSTON**  
8 High Street  
608660

**ANSTEY**  
13 The Nook  
368540

**ADAMS & HARGRAVE**  
140B Melton Road  
669914

1st HALF

SCORE	SCORER	PTS	SCORE	SCORER	PTS

HALF-TIME SCORE

2nd HALF


FULL  
TIME

**LEICESTER**



## First Fifteen Fixtures and Results

1987

### September

5	A	Bedford	W 29-9
8	H	NUNEATON	W 52-0
12	H	BATH†	W 24-13
19	H	LONDON WELSH	L 6-9
26	A	Harlequins†	W 12-9

### October

3	H	COVENTRY†	W 32-16
10	A	Richmond	W 20-6
17	A	Northampton	W 47-0
21	A	Oxford University	Wed 7.15pm W 17-6
24	H	SWANSEA	L 9-17
31	A	Llanelli	L 15-20

### November

7	H	CARDIFF	
10	H	CAMBRIDGE UNIVERSITY	Tues 7.15pm
14	A	Nottingham†	
21	H	WASPS†	
28	A	Moseley†	

### December

5	H	GLOUCESTER	
12	A	Blackheath	
19	H	BRISTOL	
28	H	BARBARIANS	Mon 2.45pm

1988

### January

2	H	HEADINGLEY	
9	A	Gloucester†	
16	H	BEDFORD	
23		J.P.C. 3rd Round	
30	A	London Welsh	

### February

6	H	LONDON SCOTTISH	
13		J.P.C. 4th Round	
20	A	Orrell†	
27	H	NORTHAMPTON	

### March

5	A	Saracens	
8	H	R.A.F.	Tues. 7.15pm
12	A	Coventry	
15	H	LOUGHBOROUGH STUDENTS	Tues 7.15pm
18	H	LANSDOWNE	Fri. 7.15pm
26	H	SALE†	

### April

2	A	Ballymena	
4	H	WATERLOO†	Easter Monday
9	A	Bristol†	
16	H	GOSFORTH	
23	H	MOSELEY	
30		J.P.C. Final	

† Merit Table

## Extra First Fifteen Fixtures and Results

1987

September	5	H	BEDFORD	W 52-9
September	12	A	Rosslyn Park	L 9-18
September	19	H	HARLEQUINS	L 16-18
September	22	A	Nuneaton	Tues. 7.15pm W 30-3
September	26	H	WASPS	L 13-24
October	3	A	Coventry	L 21-23
October	10	A	London Scottish	W 16-6
October	17	H	NORTHAMPTON	W 49-18
October	24	A	London Irish	W 25-3
November	4	A	Oxford University	W 18-12
November	7	A	Cardiff	
November	14	H	CAMBRIDGE UNIVERSITY	
November	21	A	Moseley	
December	5	A	Gloucester	
December	19	A	Derby	

1988

January	2	A	Headingley	
January	9	H	GLOUCESTER	
January	16	A	Bedford	
January	30	H	NOTTINGHAM	
February	6	H	VIPERS	
February	13	H	LONDON WELSH	
February	20	H	NORWICH	
February	27	A	Northampton	
March	5	A	Nottingham	
March	12	H	COVENTRY	
March	19	A	Chesterfield	
March	26	H	SALE	
April	4	H	WATERLOO	Easter Monday
April	9	H	BRISTOL	
April	21	H	LEICESTER THURSDAY	7.15pm
April	23	A	Moseley	

## Swifts Fifteen Fixtures and Results

1987

September	5	H	BEDFORD	W 26-0
September	12	A	Amber Valley	L 3-18
September	26	A	Nuneaton	W 37-6
October	10	H	NOTTINGHAM	Cancelled
October	17	H	NORTHAMPTON	W 32-4
October	24	H	RUGBY	W 15-13
October	31	H	L'BORO STUDENTS	W 16-4
November	7	A	Leicester University	
November	14	H	CAMBRIDGE UNIVERSITY	
November	21	H	SYSTON	
November	28	A	Moseley	
December	5	A	Melton Mowbray	
December	12	H	MARKET BOSWORTH	
December	19	H	DERBY	
December	26	A	Coalville	

1988

January	2	A	Headingley	
January	9	H	SARACENS	
January	16	A	Bedford	
January	23	H	KESTEVEN	
January	30	A	Lutterworth	
February	6	A	Nottingham	
February	13	A	Old Bosworthians	
February	20	H	NORWICH	
February	27	A	Northampton	
March	5	H	WEST LEICESTER	
March	19	A	Chesterfield	
April	2	A	Daventry	

## Youth Fifteen Fixtures and Results

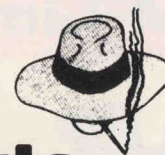
1987

September	5	A	Bedford	W 35-13
September	12	H	CARDIFF	L 16-32
September	19	H	DAVENPORT	W 11-10
September	26	A	Harlequins	L 4-23
October	3	H	BATH	W 30-10
October	10	H	NOTTINGHAM	W 56-0
October	17	A	Northampton	L 12-13
October	24	A	Rosslyn Park	W 11-8
December	5	H	ABERAMAN	
December	12	A	Moseley	
December	19	A	Derby	

1988

January	2	H	HEADINGLEY	
January	9	A	Liverpool St. Helens	
January	16	H	BEDFORD	
January	30	H	LICHFIELD	
February	6	A	Nottingham	
February	13	H	WASPS	
February	20	A	Orrell	
February	27	H	NORTHAMPTON	
March	5	H	CINDERFORD	
March	12	A	Harlow	
March	19	H	WORCESTER	
March	26	A	Nuneaton	
April	2	H	CHELTENHAM	
April	4	A	Lichfield	Easter Monday
April	9	H	BRISTOL	
April	16	A	Aberaman	
April	23	H	MOSELEY	

# Barker's ifs and buts



Cardiff —

Founded: 1876

Ground: Cardiff Arms Park

For the record:

Leicester's biggest winning margin: 16-3 (Cardiff), 1919

Leicester's best home win: 15-7, 1927

Leicester's highest home score: 29-24, 1983

Cardiff's best win: 50-5 (Cardiff), 1947

Cardiff's best win at Leicester: 24-0, 1903

Last year Cardiff won 16-10 at Cardiff (scorers: Wells, Redfern; Hare 1c).

Cardiff have a most formidable record against Leicester stretching back to the first meeting between the clubs in 1889. In 77 matches, the

Tigers have only emerged victors on 15 occasions. Leicester have won once at Cardiff in 39 attempts and that 16-3 victory in 1919 still remains Leicester's best winning margin.

Cardiff are the only side to have ever scored 50pts against Leicester (1947) and in 1984 came very close to repeating the feat when winning 47-21. Leicester's ratio of one win every five games is shown in the five fixtures played during the eighties.

1982-3 Away, lost 9-32

1983-4 Home, won 29-24

1984-5 Away, lost 21-47

1985-6 Home, lost 15-20

1986-7 Away, lost 10-16

Cardiff are having one of their worst starts to a season for over a decade, and their record after 14 matches to date reads:

Won 5 Drawn 2 Lost 7 For 192 Against 213

Of the six games Cardiff have played against English opposition they have won four. The Welsh Cup-holders in fact have a far better away record this season than home, having only beaten Cambridge University at home, and last Saturday lost at home to Moseley 10-14. Cardiff's away successes have included wins at Bristol (20-15), Northampton (14-7) and Harlequins (20-12) but they lost at Coventry 21-14. However, there is no such thing as a weak Cardiff side and a hard encounter can be anticipated.

Leicester will be in no doubt that another tough match is on the cards this afternoon. With Leicester having lost three games this season to Welsh opposition another reverse will certainly leave question marks about the players' preparation. On the bright side, except for Paul Dodge, the injury list has shortened, and there will be keen competition for places in the coming weeks. The only doubt regarding the XV for today's game will be the fitness of Dean Richards who hopefully has come through his Japanese XV game v All Blacks without mishap. Players who will be wishing for a good victory this afternoon are Ian Bates and Tom Smith marking their 100th and 50th appearances respectively.

Malcolm Foulkes-Arnold unfortunately did not taste victory last weekend to celebrate his 200th game, perhaps his fellow second-rower will have better fortune.

The club welcome to Leicester a party from the Trojans Club Southampton. They are guests of our president Kevin Andrews as this was his first club.

Members are invited to the lower bar next Thursday when the Sports Quiz holds the semi-finals and Final of this season's contest. Fingers begin pressing buzzers and bells at 7.30pm.

Members who like a flutter must make a note of Friday, November 20th. The club will be holding a 'Millionaires Night' from 7 till 11.30pm. The price of £5 a ticket includes supper and a £1000 worth of chips. Come and win a fortune.

**NEXT TUESDAY** Leicester will be at home to Cambridge University. K.O. 7.15pm. This game has been brought forward a day from Wednesday.

**Courage Division I:**

**Sat. November 21st v Wasps. K.O. 3.00pm.**



# HENRY SPOKES COPYING SERVICES

122 LONDON ROAD, LEICESTER  
Telephone: 543543

## Leicester's Premier Print Shop

For all your Brochures, Leaflets, Price Lists, Catalogues.

Our staff are friendly, competent and helpful. Call in this week and we will be pleased to quote, or Telephone Today.

## INSTANT A1 COPIES

If you have any problems with large size document reproduction call in and see us for a service that is unique in the town.

## LOW COST COPIER PAPERS

Daily deliveries of all paper sizes, Quarto to A3. 14 different colour tints, A4 to A3.  
Copier labels and transparencies.

Phone today for full price list with quantity discounts, and colour swatch.

**543543**

*Give us a try today – We can do a great deal for you.*

# BARTON-KNOTT TRAVEL

TRAVEL AGENTS,  
THE NOOK,  
ANSTEY,  
LEICESTER LE7 7AZ

Telephone Leicester  
(0533) 351522



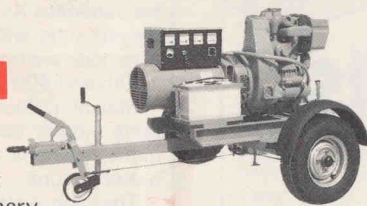
**OADBY SCREEN PRINTS LTD**  
UNIT 3, ILIFFE HOUSE, ILIFFE AVENUE,  
OADBY, LEICESTER, LE2 5LS.

TEL: (0533) 710333

## Coronet EM Limited

### CORONET

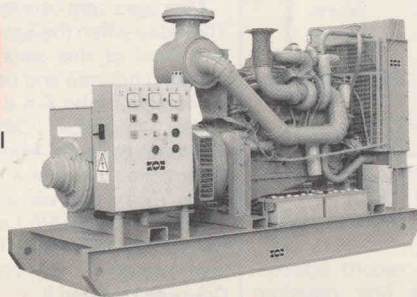
Manufacturers of  
Generating Plant  
Pumping Equipment  
Blockmaking Machinery



**CORONET EM LTD.**  
East Goscote Ind. Estate  
East Goscote  
Leicester LE7 8XJ  
Telephone Leicester 606321  
Telex 341974 COROEM G



Marine and Industrial  
Generators  
4 – 1000 KVA



**MIG GROUP LTD.**  
East Goscote Ind. Estate  
East Goscote  
Leicester LE7 8XJ  
Telephone Leicester 607265  
Telex 341012 MIGLE



## T. R. PRICE & CO.

Joiners and Builders

PERSEVERANCE WORKS

BRAZIL STREET

LEICESTER

REPAIRS IN ALL BRANCHES  
OF THE TRADE

Tel: Leicester 546520



FOR ALL  
YOUR FRESH MEAT  
REQUIREMENTS

## F. E. SWINFEN AND SON

WHOLESALE & RETAIL BUTCHERS  
HILL STREET, CROFT  
TEL: SUTTON ELMS 282231

HIGHEST QUALITY  
HOME-KILLED  
BEEF, PORK AND LAMB





*The Belmont Hotel*  
De Montfort Street, Leicester LE1 7GR.  
Tel: 0533-544773. Telex: 34619

## PENSIONS LIFE ASSURANCE SAVINGS

If personal service  
is important to you,  
give us a call.

*Roger Turner  
& Company*

INSURANCE AND INVESTMENT CONSULTANTS

11, CANON CLOSE · OADB · LEICESTER LE2 5RF

TELEPHONE (0533) 716416

...the proof  
of quality  
from  
*Cavalier  
Reproductions*  
LITHOGRAPHIC  
PLATEMAKERS

Iliffe House · Iliffe Avenue · Oadby · Leicester  
Telephone Leicester 714966

## BRODERICK ENGINEERING CO LTD

WINCHESTER AVENUE  
BLABY, LEICESTER

SPECIALIST ENGINEERS  
TO THE MINING AND  
AEROSPACE INDUSTRIES

TELEPHONE (0533) 777716

## HOGG ROBINSON & GARDNER MOUNTAIN p.l.c.

Pegasus House,  
Burleys Way,  
Leicester.

\*\*\*\*\*

Specialists in all classes of  
Commercial and Industrial  
Insurance

\*\*\*\*\*

B.I.B.A. Members

Telephone Leics. 487000

## TO CONVERT TO A digital COMPUTER

call us on:  
**021-355 6111**

Digital Equipment Co. Limited,  
Knights House, 2 Parade,  
Sutton Coldfield, B72 1PD

## CONVERT TO *Impress* FOR YOUR PRINT

IMPRESS (Leicester) LTD.,  
8 MORRIS ROAD,  
LEICESTER LE2 6BR  
TELEPHONE: (0533) 700999



# Well worth tackling



**KIRBY & WEST**  
LEICESTER'S LOCAL DAIRY

RICHARD III ROAD, LEICESTER LE3 5QU. TELEPHONE: LEICESTER 20131.